

# Ace Suite Pool Access

**Region:** Hua Hin   **Sleeps:** 5

---

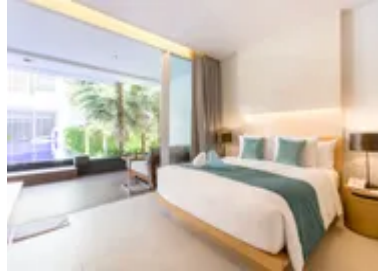
## Overview

Ace Suite Pool Access offers a perfect blend of style, comfort, and relaxation, making it an exceptional choice for a Thailand getaway. This two-bedroom villa, thoughtfully arranged across a single floor, accommodates up to four guests and is surrounded by neighbouring buildings that enhance privacy while providing direct access to the outdoor infinity pool. The contemporary design flows throughout the villa, with bright, open-plan interiors adorned in modern décor and chic furnishings, creating a welcoming atmosphere from the moment you step inside.

The spacious living area is flooded with natural light through floor-to-ceiling patio doors, which can be opened to let in the tropical breeze. Guests can relax on plush L-shaped sofas, enjoy meals at the dining table, or take advantage of the working desk area. Each double bedroom offers ample space, cosy bedding, televisions, and en-suite bathrooms for convenience. Outdoors, the shaded patio provides comfortable daybeds and alfresco dining areas, leading directly to the exclusive swimming pool, the perfect retreat to unwind and enjoy Thailand's sunshine in total privacy.

## Facilities

Wi-Fi/Internet • Golf Nearby • Air-Con • Walk to Beach • Historical Sites • Resort Villa • Beach Nearby • Private Pool • Modern • Ideal for Babies & Toddlers • Ideal for Kids • Walk to Restaurant • <1hr to Airport • Outstanding Landscapes • Outdoor Pursuit & Activities • Tourist Towns & Villages



# Interior & Grounds

## Ground Floor

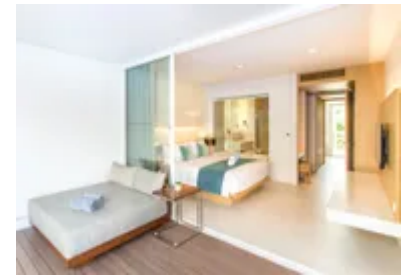
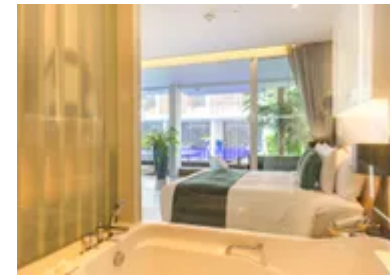
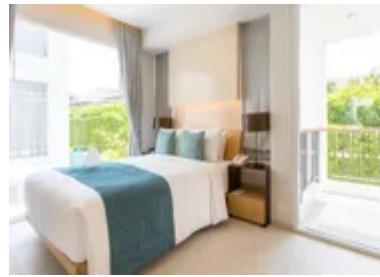
- Living room
- Dining room
- Two double bedrooms with en suite bathrooms

## Exterior Grounds

- Access to shared pool
- Day bed

## **Additional facilities**

- W-fi
- Air conditioning
- Hair dryer
- Safety Box



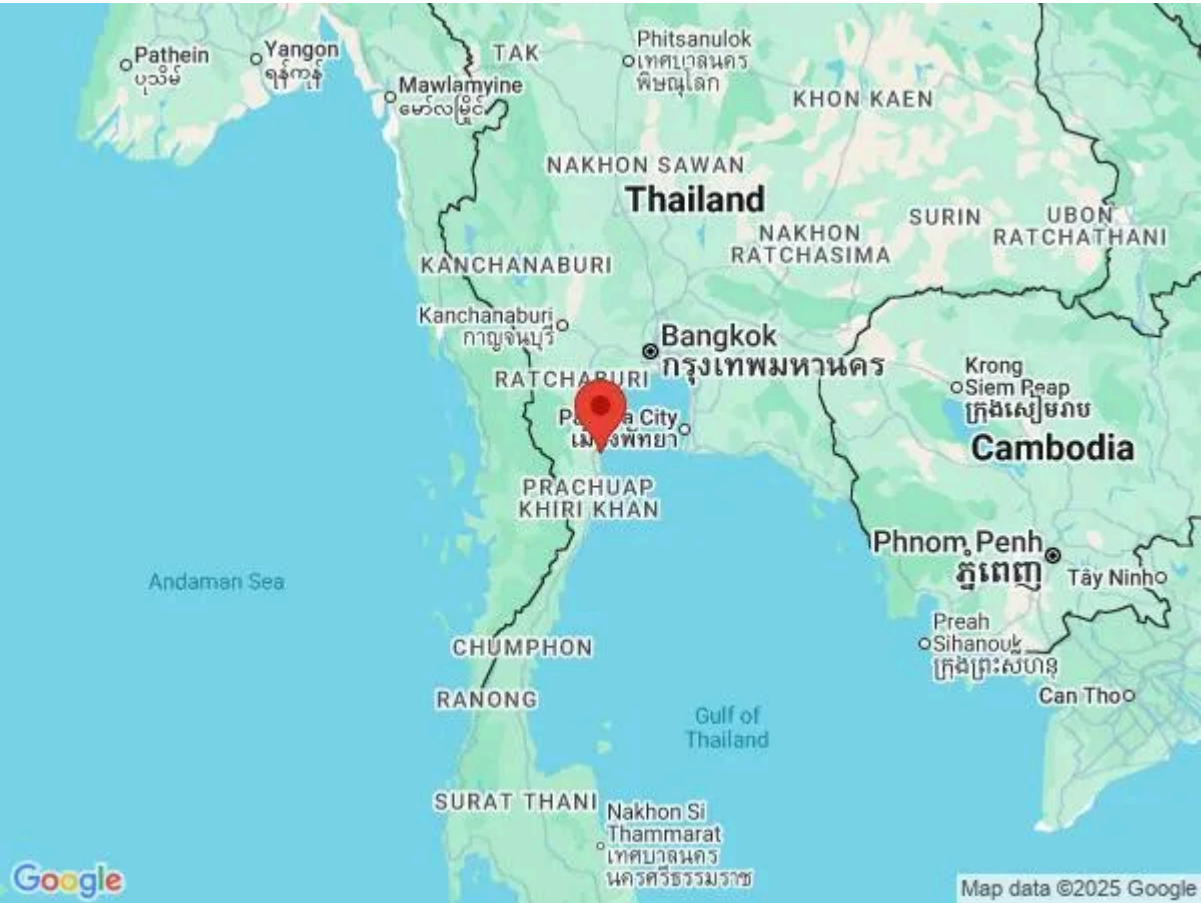
# Location & Local Information

This stylish resort provides everything guests could wish for, with a spa, fitness centre, bars, restaurants, a stunning pool, and direct beachfront access. Located in Cha Am, in the western province of Phetchaburi, it's just 170 kilometres south of Bangkok (about 2.5 hours by car) and 25 kilometres north of the popular resort town of Hua Hin. While Hua Hin is known for its vibrant tourist scene, Cha Am offers a more laid-back atmosphere, with a 5-kilometre-long beach lined with Casuarina trees and a colourful local culture beloved by Thai holidaymakers.

Guests can enjoy a variety of activities, from pony rides and banana boat rides for children to windsurfing, parasailing, and water-skiing. Relax with a Thai massage on the beach or savour a cocktail while watching the sunset. Nearby attractions include the historic Maruekathaiyawan Palace, the Venice-inspired shopping complex The Venezia, and the lively Cicada Market in Hua Hin. With ancient temples, vibrant markets, cultural landmarks, and family-friendly activities all within reach, Hua Hin and Cha Am promise an unforgettable blend of relaxation and adventure.

## Local Amenities

Nearest Airport	Hua Hin Airport (6 km)
Nearest Bar/Pub	Ivy Ocean Lounge (In Resort)
Nearest Bar/Pub	Ace Beach Club (In Resort)
Nearest Beach	Ace Beach (In Resort)
Nearest Ferry Port	Hua Hin - Pattaya Ferry Port (20 km)
Nearest Golf	Palm Hills Golf Club Hua Hin (3 km)
Nearest Restaurant	The Exchange Restaurant (In Resort)



Nearest Restaurant	<b>The Ivy (In Resort)</b>
Nearest Supermarket	<b>Huai Saai Taai Market (2 km)</b>
Nearest Town	<b>Phetchaburi (55 km)</b>
Nearest Village	<b>New Village (2 km)</b>

## What we love

- This chic villa provides ample space and privacy for a blissful stay in Thailand, as well as a contemporary and stylish design throughout!
- The villa offers access to an outdoor infinity pool, huge daybeds on the balcony and televisions in every room!
- The villa sits in a resort, nestled in front of an accessible beach and offers numerous places to eat and drink, a spa and beachfront service!
- The resort offers shuttle services to and from Bangkok, 24-hour concierge services and four outstanding outdoor infinity pools!

## What you should know...

- The infinity pool in the exterior of the villa is shared by guests of the resort
- A trip to Bangkok is worth a journey, however, the villa sits 2 hours and twenty minutes away.
- Although the resort offers shuttle services and helps with transportation advice, car hire will give guests more flexibility, convenience and the ability to visit anywhere!

# Terms & Conditions

- **Security deposit:** Credit card details are required 2 weeks prior to departure for pre-authorisation.
- **Arrival time:** 3 pm
- **Departure time:** 12 pm
- **Energy costs included?:** Yes, included in the rental price.
- **Linen & towels included?:** Yes, included in the rental price.
- **Pets welcome?:** Not allowed.
- **Changeover day:** Flexible.
- **Smoking Allowed?:** Smoking & Vaping are not permitted.
- **Minimum stay:** 2 - 5 nights, depending on the season. All other durations on request.
- **Heating costs included?:** Yes, included in the rental price.
- **Tax:** Tourist Tax included in the rental price.
- **Internet access?:** Wi-Fi internet access included.