

Del Rey Beachfront Apartment II

Region: Praia D'El Rey **Sleeps:** 4

Overview

Situated within the stunning Praia D'El Rey Resort on Portugal's Silver Coast, Del Rey Beachfront Apartment II offers stylish and modern living for six guests comfortably. As the name suggests, these chic apartments are located just a short distance from the beach and benefit from wonderful sea views from their private balconies.

As you enter the apartment, your eyes are automatically drawn to the breathtaking views from your spacious balcony. Drink in the views out on the terrace with a glass of wine at the end of the day, or relax out of the heat of the Portuguese sunshine in the open-plan living space. This space flows with ease, as you can relax on the comfortable sofas while others chat at the dining table or cook up a storm in the kitchen. Equipped with all you could need to whip up a feast, including a dishwasher, coffee machine and fridge-freezer, the kitchen is the perfect place for any budding chefs in the group. Or if you don't feel like cooking, then head to one of the six restaurants and bars located within the Resort, before wandering back to your room for a good night's rest.

When it is time to head to bed, there is the choice of two spacious bedrooms at Del Rey Beachfront Apartment II. The master suite boasts a double bed and an ample en-suite bathroom for extra privacy, while the other bedroom is home to twin beds and shares use of a family bathroom, making it perfect for siblings or friends.

Beachfront Apartment II is located in the northern part of Praia D'El Rey Resort, and guests here benefit from access to the condominium pool as well as easy access to the nearby beach. Located less than an hour's drive north of Lisbon airport, you can arrive with ease ready for a week or two of rest and relaxation. With six bars and restaurants, an 18-hole golf course, a tennis academy and a spa and health club all located within the Resort, your biggest decision will be planning what to do on each day!

Facilities

Seaview • Wi-Fi/Internet • Golf Nearby • Tennis Nearby • Wellness • Walk to Beach • Coffee Machine • Washing Machine • Beachfront • Maid Service Included • Cots (Cribs) • Shared Pool • Beach Nearby • Laptop Friendly Workspace • Townhouse/Apartment • Modern • Breakfast Available • Ideal for Kids • Ideal for Teens • Walk to Restaurant • Tumble Dryer • Dishwasher • Microwave • Satellite TV • Heating • High Chair(s) • Outstanding Landscapes • Outdoor Pursuit & Activities • Tourist Towns & Villages



Interior & Grounds

The Apartment

Del Rey Beachfront Apartment II has a modern design and enjoys views of the Atlantic Ocean. There are 2 bedrooms and 2 bathrooms accommodating up to 4 guests.

Interior

- Fully equipped open kitchen
- Open-plan living and dining area
- Bedroom with double bed and en-suite bathroom
- Bedroom with two single beds
- Bathroom

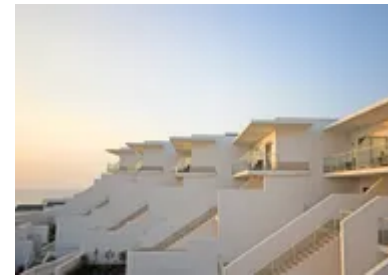
Exterior Grounds

- Private balcony with outdoor seating

Additional Facilities

- Central heating
- Wi-Fi
- Television
- Dishwasher
- Coffee machine
- Washing machine
- Dryer
- Iron and ironing board
- Hair dryer
- High chair and cot upon request (please see Ts and Cs)

Please note that these properties are all of a similar style, but may vary in layout, surroundings and furnishings.



Location & Local Information

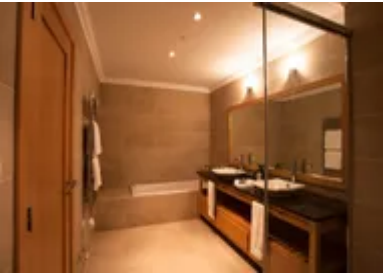
Del Rey Beachfront Apartment II is ideally located within Praia D'El Rey Golf and Beach Resort, allowing guests to achieve the perfect balance of villa privacy with hotel amenities. With so many facilities available, including six restaurants and bars, a golf course with a driving range and a tennis academy to name but a few, there is no shortage of things to do at Praia D'El Rey. Beachfront Apartment II is situated towards the north of the Resort, benefitting from direct beach access and views of the ocean and golf course from the private balcony.

The Resort offers a selection of watersports including, kitesurfing, SUP, windsurfing and even sport fishing so water-lovers will be more than satisfied! If you'd prefer to stay on land, then a round of tennis or golf is the perfect way to spend your afternoon - why not spend the morning practising on the driving range as well! Or if you prefer a slower pace of life, then the spa and health club offers nine treatment rooms, a pool with jacuzzi and a Turkish bath.

There are several day trips to be taken outside of the Resort as well. The coast of Peniche is known for its stunning beaches and perfect conditions for a number watersports, as well as ideal offshore waters for a spot of sea fishing! The nearby Obidos Lagoon boasts the most extensive coastal lagoon system on the Portuguese coast and can be explored by canoe. If you'd rather immerse yourself in culture and history, then head to the Portuguese capital of Lisbon, which is around an hour's drive from Praia D'El Rey Resort. Here you can explore the Belem Tower, Jeronimos Monastery and enjoy a bit of retail therapy at the Praca do Comercio.

Local Amenities

Nearest Airport	Lisbon Portela Airport (92 km)
Nearest Village	Ferrel (10 km)
Nearest Town/City	Caldas da Rainha (26 km)
Nearest Restaurant	6 Resort Restaurants & Bars (On Site)
Nearest Beach	Praia do Pico da Antena (300 m)
Nearest Golf	Praia D'El Rey Golf Course (1 km)
Nearest Tennis	Praia D'El Rey Resort (100 m)
Nearest Supermarket	Mini Mercado (3 km)



What we love

- Located 200m from the beach and with wonderful sea views, Del Rey Beachfront Apartment II will impress any beach lover!
- Guests can enjoy access to a number of facilities within Praia D'El Rey Resort, including an 18-hole golf course, a spa and health club, a tennis academy and six restaurants and bars
- Less than an hour's drive north of Lisbon, why not head to the Portuguese capital for a day of city sightseeing

What you should know...

- Guests can enjoy access to the condominium pool which is shared with other guests in the Beachfront Apartments
- High chairs and cots are available upon request at a supplement
- Air conditioning is not available at the Beachfront Apartments

Terms & Conditions

- **Security deposit:** All clients are required to pay at time of check in a security deposit of €200 by cash, cheque or credit card.
- **Arrival time:** 4 pm
- **Departure time:** 10 am
- **Energy costs included?:** Yes, included in the rental price
- **Linen & towels included?:** Yes, included in the rental price
- **Pets welcome?:** Pets are not permitted
- **Other Ts and Cs:** High chair and cot available upon request for an additional charge of €5 per day per item.
- **Changeover day:** Flexible
- **End of stay cleaning available?:** Yes. However, guests are required to leave the accommodation clean, tidy and in the same condition as on their arrival. Any extra cleaning, laundry, maintenance and/or rubbish disposal required will be charged against the security deposit.
- **Smoking Allowed?:** Smoking and vaping are not permitted
- **Minimum stay:** 1 - 5 nights
- **Tax:** Tourist tax is included in the rental price
- **Internet access?:** Yes, included in the rental price