

Welsh Grange

Region: Ceredigion Sleeps: 10

Overview

Set just outside the wonderful Cardigan, where rolling hills meet the coastline, Welsh Grange offers a peaceful West Wales base with open views across the surrounding countryside. From the garden, the landscape stretches westward, creating a calm setting to take in the changing light throughout the day.

The house combines original character with a more contemporary extension. The open-plan kitchen and dining space sits at the heart of the home, the perfect setting for easy, sociable living, with doors leading out to the terrace. A choice of inviting living spaces provides room to unwind, several with log burners adding a cosy feel. Five bedrooms sleep up to ten guests, with a ground floor bedroom and en suite, as well as a spacious master room upstairs with a four-poster bed.

Time here is best spent at a gentle pace. Meals can be prepared in the light and airy kitchen, or outside using the pizza oven and barbecue, while the garden offers space for both children and adults to unwind, complete with a treehouse and lawn games. A welcome hamper of local produce is provided on arrival, and additional experiences such as private dining, cookery sessions, yoga, or treatments can be arranged to make your stay at Welsh Grange feel effortless and considered.

Cardigan is a short drive away, known for its independent shops and well-regarded places to eat, while the surrounding area offers access to some of the UK's best beaches, coastal paths, and countryside walks. Welsh Grange is an ideal retreat for families or groups of friends looking to slow down and enjoy this particularly special corner of West Wales.



Facilities

Watersports • Canoeing/Kayaking • Historical Sites • Recommended • Ideal for Kids • Surfing • Walking/Hiking Paths • Golf Nearby • Tennis Nearby • Wellness • Cycling • Ideal for Xmas/NY • Boat Trips • Cots (Cribs) • Ideal for Teens • Manor • Has Discount • Has Offer • Special Offer • Chef/Cook Available • Beach Nearby • Ground Floor Bed & Bath • Parking Space • Wi-Fi/Internet • BBQ • Rural Location • Decorated for Christmas • Washing Machine • Outstanding Landscapes • Hairdryer • Outdoor Pursuit & Activities • Tourist Towns & Villages • Spa/Massage • Indoor Games • Tumble Dryer • Dishwasher • Microwave • Smart TV • Home Cinema • Animal farm • Working Fireplace/Woodburner • Heating • Aquarium • Kid-friendly museum • Kid-friendly excursions • Water excursions/Boat trips • Yoga Classes Available • Spa Treatments Available • Catering Available • Playground nearby • Board games • Children's videos/DVDs • Swings • Treehouse • Ideal for Babies & Toddlers • Football net • Plastic crockery • High Chair(s) • Fenced Grounds

Interior & Grounds

Ground Floor

- Open-plan fully-equipped kitchen and morning room with oven, microwave, dishwasher, fridge freezer and breakfast dining facilities
- Formal dining room with seating for 10 and log burner
- Drawing room with log burner
- Relaxed lounge with smart TV with Sky and a log burner
- Bedroom with double bed and ensuite shower room
- WC

Lower Ground Floor

- Laundry facilities

First Floor

- Master bedroom with walnut four-poster bed and en-suite shower room
- Bedroom with king-size bed
- Bedroom with twin single beds
- Bedroom with twin single beds
- Family bathroom

Exterior Grounds

- Terrace with outdoor seating overlooking the Preseli Hills
- Terrace with al fresco dining table (access from kitchen)
- Pizza oven
- Charcoal barbecue
- Gardens
- Children's tree house and swing
- Parking spaces

Additional Facilities

- Wi-Fi
- Smart TVs
- Selection of toys
- Hairdryer
- Laundry facilities
- Travel cot & highchair available on request (please bring your own cot linen)



Location & Local Information

Just a five-minute drive from Welsh Grange, Cardigan is one of West Wales' most appealing towns, known for its independent spirit and excellent food scene. Colourful streets are lined with thoughtful boutiques, galleries, and welcoming cafés, alongside restaurants that have earned a reputation for serving some of the best seasonal produce in Wales. The town sits along the River Teifi, with its castle and estuary walks adding to its sense of place.

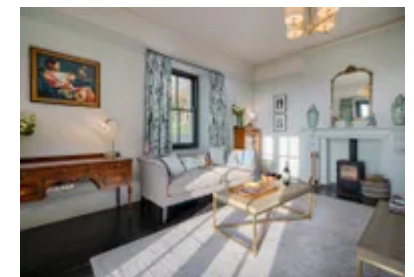
Beyond Cardigan, the coastline quickly unfolds into a series of remarkable beaches. Poppit Sands offers wide stretches of golden sand, while smaller coves such as Mwnt are known for their clear waters and frequent dolphin sightings. The Ceredigion Coast Path provides miles of walking with far-reaching sea views, weaving between cliffs, beaches, and wildlife-rich headlands.

Inland, the landscape shifts to wooded valleys and gentle hills, with places such as the Teifi Gorge and Cilgerran Castle offering a different perspective on the area's natural beauty. This part of West Wales feels both varied and quietly special, with plenty to explore at an unhurried pace.

All of this makes Welsh Grange an ideal base for discovering the very best of this quietly captivating corner of West Wales.

Local Amenities

Nearest Airport	Cardiff Airport (137 km)
Nearest Bar/Pub	The Saddlers Arms, Cardigan (4 km)
Nearest Beach	Poppit Sands Beach (9 km)
Nearest Ferry Port	Fishguard Harbour (32.5 km)
Nearest Golf	Cardigan Golf Club (9.5 km)
Nearest Restaurant	The Printworks, Cardigan (3 km)



Nearest Town	Cardigan (4.5 km)
Nearest Train Station	Carmarthen Train Station (42 km)
Nearest Supermarket	Tesco Superstore, Cardigan (4 km)

What we love

- Soak up the far-reaching views which unfold across the Preseli Hills, the River Teifi, and towards Cardigan Bay.
- A stay at Welsh Grange is a holiday made for food lovers, from the well-equipped kitchen and pizza oven to excellent dining in nearby Cardigan or the option of a private chef.
- The house blends Victorian character with bright, contemporary spaces, creating an easy, relaxed feel for spending time together.

What you should know...

- Additional services such as private dining, yoga, or spa treatments are available on request and should be arranged in advance.
- The house is set in a rural location just outside Cardigan, so a car is recommended for exploring the area, with ample parking available at the property.
- Children should be supervised at all times, particularly when using the treehouse and outdoor play areas.
- A ground floor bedroom and bathroom make the house well suited to guests with more limited mobility.

Terms & Conditions

- **Security deposit:** £500 paid by bank transfer directly to the owner before arrival and refunded within 2 weeks of departure subject to a damage inspection
- **Arrival time:** 4pm
- **Departure time:** 10am
- **Energy costs included?:** Yes, included in the rental price
- **Linen & towels included?:** Yes, included in the rental price
- **Pets welcome?:** No pets
- **Other Ts and Cs:** Please note that parties, stag & hen do's are not allowed.
- **Changeover day:** Friday or Monday. Fridays only during school holidays.
- **End of stay cleaning available?:** Yes, included in the rental price
- **Smoking Allowed?:** No smoking
- **Minimum stay:** 7 nights during school holidays. 3 nights throughout the rest of the year.
- **Internet access?:** Yes, Wi-Fi is included in the rental price