

Opal

Region: The South West Sleeps: 4

Overview

Opal is the largest lodge within Clifftops, situated at the northern end of the development, directly overlooking Church Ope Cove, Rufus Castle and the sea. The contemporary home makes the ideal base for those wanting to explore the magnificent Jurassic coastline and all that the beautiful county of Dorset has to offer.

Built in 2020, Opal has been designed with incredibly high attention to detail, floor to ceiling windows flood the lodge with light and allow guests to make the most of the wonderful sea views. With the accommodation set across one level, Opal can comfortably accommodate up to four guests across two well-appointed bedrooms. The living space is open-plan and features a bespoke fireplace, a Samsung smart TV and a fully-equipped kitchen with dining facilities. The king-size master bedroom features its own en-suite facilities, while guest staying in the second bedroom, which can be set up with either a super-king double or twin single beds on request, can make use of the luxurious family bathroom.

Outside, after action-packed days spent exploring this fabulous region of Dorset, the private terrace is the perfect place to enjoy a quiet beverage while admiring the remarkable sea views.

***For larger groups, you may also want to consider booking the neighbouring lodges: Topaz (<https://www.oliverstravels.com/britain-ireland/dorset/topaz/>), Jade (<https://www.oliverstravels.com/britain-ireland/dorset/jade/>), Silver Cove (<https://www.oliverstravels.com/britain-ireland/dorset/silver-cove/>) and Copper Crest (<https://www.oliverstravels.com/britain-ireland/dorset/copper-crest/>). Combined, all five lodges can accommodate up to 20 guests and can be hired together as The Clifftops (<https://www.oliverstravels.com/britain-ireland/dorset/the-clifftops/>).*

Facilities

Recommended • Not for little ones • Walking/Hiking Paths • Romantic • Walk to Beach • Ideal for Teens • Beach Nearby • Ground Floor Bed & Bath • Modern • Cottage • Parking Space • Country Estate • Wi-Fi/Internet • Seaview • BBQ • Rural Location • Washing Machine • Outstanding Landscapes • Outdoor Pursuit & Activities • Tourist Towns & Villages • TV • Tumble Dryer • Dishwasher • Electric Car Charger • Smart TV • Working Fireplace/Woodburner • Heating • Pre-Stocked Fridge Available • Catering Available



Interior & Grounds

The accommodation in Opal is set over one level.

Ground Floor

- Open-plan living area with feature fireplace and terrace access
- Fully-equipped kitchen with dining facilities for 4
- Bedroom with king-size bed and en-suite shower room
- Bedroom with super-king bed (or twin single beds on request)
- Family bathroom

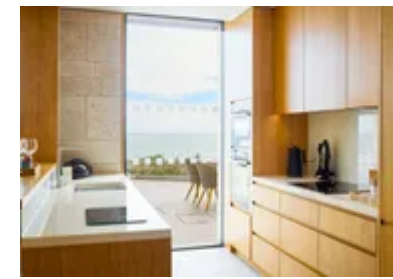
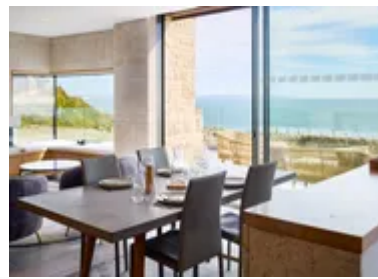
Exterior Grounds

- Private terrace with sea views
- Seating
- Gas barbecue

Additional Facilities

- Wi-Fi
- TV
- Bose portable sound system
- Washing machine & dryer
- Underfloor heating
- Parking
- Tesla Car Charging Point (*situated on the Estate and to be used on a first come, first served basis*)

***For larger groups, you may also want to consider booking the neighbouring lodges: Topaz (<https://www.oliverstravels.com/britain-ireland/dorset/topaz/>), Jade (<https://www.oliverstravels.com/britain-ireland/dorset/jade/>), Silver Cove (<https://www.oliverstravels.com/britain-ireland/dorset/silver-cove/>) and Copper Crest (<https://www.oliverstravels.com/britain-ireland/dorset/copper-crest/>). Combined, all five lodges can accommodate up to 20 guests and can be hired together as The Clifftops (<https://www.oliverstravels.com/britain-ireland/dorset/the-clifftops/>).*



Location & Local Information

Opal is situated within the Dorset Castle Estate on the Isle of Portland, the most southernmost point on the Jurassic coast, a tied island joined to the mainland by Chesil beach. Despite being relatively small in size, there is plenty to see, do and explore without even leaving the isle, enjoy a visit to the 16th century Portland Castle, Rufus Castle or Portland Bill Lighthouse or simply choose to spend afternoons lazing in the sun on Church Ope Cove.

The seaside town of Weymouth is just a 20-minute drive away, a resort hugely popular with families and it's easy to see why with its golden sand beaches, sand sculptures, crazy golf and Sea Life Centre. Further afield, the popular market town of Lyme Regis is an hours' drive away while dramatic West Bay, made famous from the ITV series Broadchurch, is just 50-minutes away.

Local Amenities

Nearest Airport	Bournemouth Airport (72 km)
Nearest Village	Easton, Isle of Portland (1 km)
Nearest Town	Weymouth (11 km)
Nearest Train Station	Weymouth Train Station (1.2km)
Nearest Restaurant	The Eight Kings (1.5 km)
Nearest Bar/Pub	Corner House Inn (1 km)
Nearest Beach	Church Ope Cove (In walking distance)
Nearest Supermarket	Tesco Superstore (1.5 km)
Nearest Golf	Weymouth Golf Club (11.5 km)



What we love

- Enjoy uninterrupted sea views whatever the weather from the comfort of the stylish living area which boasts its own bespoke fireplace!
- Opal boasts a fabulous location on the Isle of Portland, ideal for exploring the rugged Jurassic coastline and just twenty minutes from exciting Weymouth where a wide variety of family-friendly attractions can be found!
- Spend Summer evenings dining al fresco on the terrace while enjoying the beautiful scenery

What you should know...

- The living and sleeping accommodation is set across one level
- Due to the contemporary interiors, Opal is less suited to those travelling with small children or toddlers
- Please note that due to the access, the property is less suited to guests with mobility issues

Terms & Conditions

- **Security deposit:** £100 charged to the client's credit card as a pre-authorisation at least 2 weeks prior to arrival and refunded two weeks after departure, subject to a full inspection
- **Arrival time:** 4pm
- **Departure time:** 10am
- **Energy costs included?:** Yes, included in the rental price
- **Linen & towels included?:** Yes, included in the rental price
- **Pets welcome?:** No pets
- **Changeover day:** Flexible.
- **End of stay cleaning available?:** Yes. However, guests are required to leave the accommodation clean, tidy and in the same condition as on their arrival. Any extra cleaning, laundry, maintenance and/or rubbish disposal required will be charged against the security deposit.
- **Smoking Allowed?:** No smoking or vaping
- **Minimum stay:** Please note that there is a 3-night minimum stay, this may be increased across peak dates
- **Heating costs included?:** Yes, included in the rental price
- **Internet access?:** Yes, Wi-Fi is included in the rental price