

Jade

Region: The South West Sleeps: 4

Overview

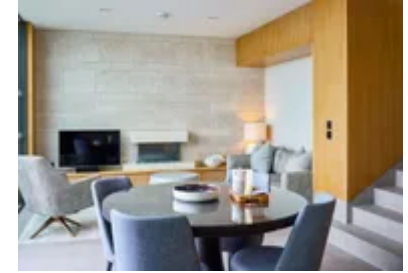
Jade, a stunning cliffside property, pays tribute to the rich heritage of worked stone, fossils, and dinosaurs that define the breathtaking Jurassic coastline. This contemporary retreat serves as the perfect base for those eager to explore the captivating landscapes and attractions of beautiful Dorset. Built in 2020, Jade is part of the exclusive Clifftops development, featuring five luxurious lodges nestled into the iconic Portland stone cliffs.

Spread across two levels, Jade comfortably accommodates up to four guests in two thoughtfully designed bedrooms. The open-plan living space features a bespoke fireplace, a Samsung smart TV, and a fully equipped kitchen with dining facilities. Large floor-to-ceiling windows fill the area with natural light and showcase spectacular coastal views. The king-size master bedroom includes en-suite facilities, while the second bedroom can be configured as a super-king double or twin singles upon request, with access to a luxurious family bathroom. After adventurous days exploring the stunning Isle of Portland, the private terrace provides a peaceful retreat to unwind with a refreshing beverage while enjoying the breathtaking sea vistas.

***For larger groups, you may also want to consider booking the neighbouring lodges: Opal (<https://www.oliverstravels.com/britain-ireland/dorset/opal/>), Topaz (<https://www.oliverstravels.com/britain-ireland/dorset/topaz/>), Silver Cove (<https://www.oliverstravels.com/britain-ireland/dorset/silver-cove/>), and Copper Crest (<https://www.oliverstravels.com/britain-ireland/dorset/copper-crest/>). Combined, all five lodges can accommodate up to 20 guests and can be hired together as The Clifftops (<https://www.oliverstravels.com/britain-ireland/dorset/the-clifftops/>).*

Facilities

Romantic • Walking/Hiking Paths • Not for little ones • Ideal for Kids • Recommended • Walk to Beach • Ideal for Teens • Has Discount • Special Offer • Beach Nearby • Instagrammable • Modern • Cottage • Parking Space • Wi-Fi/Internet • Country Estate • Seaview • Rural Location • Washing Machine • Outstanding Landscapes • Outdoor Pursuit & Activities • Tourist Towns & Villages • TV • Tumble Dryer • Dishwasher • Electric Car Charger • Smart TV • Working Fireplace/Woodburner • Heating • Kid-friendly museum • Kid-friendly excursions • Water excursions/Boat trips • Pre-Stocked Fridge Available • Amusement park • Catering Available



Interior & Grounds

Jade

Ground Floor

- Open-plan living area with bespoke fireplace
- Fully-equipped kitchen with dining facilities

First Floor

- Bedroom with king-size bed and en-suite shower room
- Bedroom with super-king bed (*can be set up with twin single beds on request*)

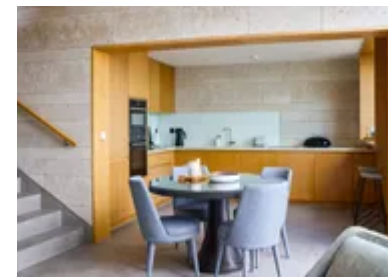
Exterior Grounds

- Private terrace
- Seating
- Sea views

Additional Facilities

- Wi-Fi
- Samsung smart TV
- Bose portable sound system
- Washing machine & dryer
- Underfloor heating
- Parking
- Tesla Car Charging Point (*situated on the Estate and to be used on a first come, first served basis*)

***For larger groups, you may also want to consider booking the neighbouring lodges: Opal (<https://www.oliverstravels.com/britain-ireland/dorset/opal/>), Topaz (<https://www.oliverstravels.com/britain-ireland/dorset/topaz/>), Silver Cove (<https://www.oliverstravels.com/britain-ireland/dorset/silver-cove/>), and Copper Crest (<https://www.oliverstravels.com/britain-ireland/dorset/copper-crest/>). Combined, all five lodges can accommodate up to 20 guests and can be hired together as The Clifftops (<https://www.oliverstravels.com/britain-ireland/dorset/the-clifftops/>).*



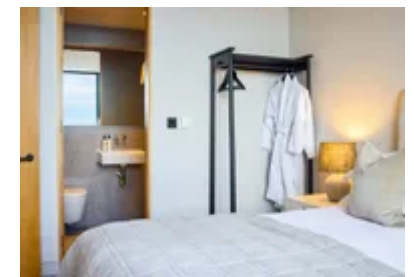
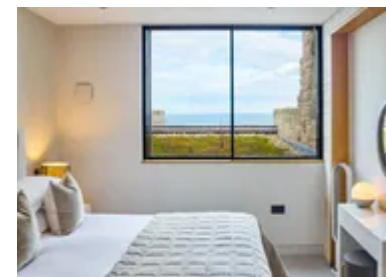
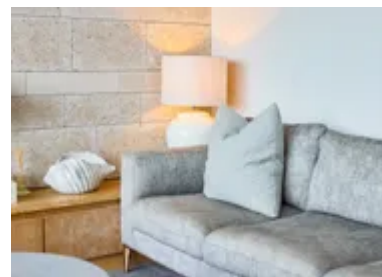
Location & Local Information

Jade is situated on the Isle of Portland, the southernmost point on the Jurassic Coast, connected to the mainland by the stunning Chesil Beach. Despite its relatively small size, the island offers a wealth of sights and activities for visitors. Explore historical gems like the 16th-century Portland Castle, Rufus Castle, and Portland Bill Lighthouse, or simply relax and soak up the sun at Church Ope Cove. With so much to see and do during your stay at Jade, you'll find endless opportunities for adventure, whether you choose to explore the island or venture to the mainland.

The seaside town of Weymouth is just a 20-minute drive away, renowned for its family-friendly attractions, including golden sandy beaches, sand sculptures, crazy golf, and the Sea Life Centre. For those seeking to go further afield, the charming market town of Lyme Regis is only an hour's drive away, while the dramatic cliffs of West Bay, famous from the ITV series Broadchurch, can be reached in just 50 minutes. After a day of exploration, Jade is the perfect place to relax and unwind, providing a serene sanctuary with unparalleled views you'll never tire of.

Local Amenities

Nearest Airport	Bournemouth Airport (72 km)
Nearest Village	Easton, Isle of Portland (1 km)
Nearest Town	Weymouth (11 km)
Nearest Train Station	Weymouth Train Station (13 km)
Nearest Restaurant	The Eight Kings (1.5 km)
Nearest Bar/Pub	Corner House Inn (1 km)



Nearest Beach	Church Ope Cove (In walking distance)
Nearest Supermarket	Tesco Superstore (1.5 km)
Nearest Golf	Weymouth Golf Club (11.5 km)

What we love

- Enjoy stunning, uninterrupted sea views from the wonderful private terrace!
- Jade boasts a fabulous location on the Isle of Portland, ideal for exploring the rugged Jurassic coastline and just twenty minutes from exciting Weymouth where a wide variety of family-friendly attractions can be found!
- Jade is an excellent option for two couples holidaying together! One of the bedrooms features its own en-suite facilities, while guests staying in the second bedroom can make use of the family bathroom.

What you should know...

- The high-quality nature of the accommodation makes Jade less suited to families traveling with young children.
- Please note that due to the access, Jade is less suited to guests with mobility issues

Terms & Conditions

- **Security deposit:** £100 charged to the client's credit card as a pre-authorisation at least 2 weeks prior to arrival and refunded two weeks after departure, subject to a full inspection
- **Arrival time:** 4pm
- **Departure time:** 10am
- **Energy costs included?:** Yes, included in the rental price
- **Linen & towels included?:** Yes, included in the rental price
- **Pets welcome?:** No pets
- **Changeover day:** Flexible.
- **End of stay cleaning available?:** Yes. However, guests are required to leave the accommodation clean, tidy and in the same condition as on their arrival. Any extra cleaning, laundry, maintenance and/or rubbish disposal required will be charged against the security deposit.
- **Smoking Allowed?:** No smoking
- **Minimum stay:** Please note that there is a 3-night minimum stay, this may be increased across peak dates
- **Heating costs included?:** Yes, included in the rental price
- **Internet access?:** Yes, Wi-Fi is included in the rental price