

# Lostwithiel Manor

**Region:** The South West   **Sleeps:** 18

---

## Overview

Welcome to the magnificent Grade II listed Lostwithiel Manor. This exceptional manor house is one of the most beautiful in the country. It is steeped in history and boasts the most impressive interior design by the brilliant Sarah Fortescue Designs and is surrounded by the most incredible estate. Lostwithiel Manor is the perfect venue for a small, intimate wedding or an ultra luxurious holiday. As well as Lostwithiel Manor which sleeps eighteen guests in luxurious comfort, the Lostwithiel Manor Estate boasts another astonishing manor house, Lostwithiel Stewardry which sleeps fourteen guests and a selection of cottages, Lostwithiel Stable House which sleeps four, Lostwithiel House which sleeps six and Lostwithiel Dairy House which sleeps eight guests. In addition, some of the properties enjoy sofa beds for the odd extra guest. If you are planning a wedding, a special event or a family get together, the Lostwithiel Manor Estate is fantastic as you can book a combination of the properties and all enjoy a wonderful time together.

Discover within your stay the eco-friendly charm of Lostwithiel Manor, boasting reduced CO2 production, setting it apart from other properties across the country.

The Lostwithiel Manor Estate sits deep in the Cornish countryside, four miles from Lostwithiel. The estate is phenomenal, boasting spectacular landscaped gardens, a lake, manicured lawns, a deer park, parkland, fascinating historic monuments, miles of cycling and hiking tracks, orchards and a tennis court. Guests enjoy endless entertainment. The estate managers boast a prestigious list of local partners who can offer additional services to ensure that you experience the holiday of your dreams. Their own private chef can cater for special events or work with a highly professional catering team. The estate hosts a number of special community annual events.

Lostwithiel Manor is a wildly romantic manor house that has been beautifully refurbished by the remarkable Sarah Fortescue Designs, bringing vitality and bold colour to the rooms together with the best of Cornish craftsmanship. The living spaces and bedrooms are astounding, all with different styles and moods. The stately reception rooms are lavish and brilliantly furnished yet still feel homely and very welcoming. Roaring open fires welcome you in the cooler months and add atmosphere and a warm ambience. The main living room is drowned in magical sunlight and is full of sumptuous furniture, together with its giant fireplace, beautiful period features and oversized flower arrangements. Its ceiling cornicing and plaster mouldings are works of art themselves. You can get lost in a novel in the library, settle down with a pot of tea and the Sunday newspapers or enjoy a movie using the pop-up projector. You can dine like royalty by candlelight in the atmospheric, panelled dining room with the open fire lit and the ultra long table beautifully set with fine glass and china. There are additional living spaces, some cosy and inviting, perfect for pre-dinner drinks and others perfect for informal breakfasts and planning the days activities. The manor house enjoys



exquisite wallpapers and lavish fabrics which together with sumptuous furnishings make for extravagant holiday living. One room is opulent, moody and rich in colour whilst another is playful with garden inspired wallpaper and bright light beaming through the period windows. The kitchen is a remarkable wonder with the very best of appliances and such amazing style. Bluetooth speakers, television and boardgames are all supplied for your enjoyment plus guests enjoy use of the stable games room.

Lostwithiel Manor offers nine opulent bedrooms, all vibrant luxurious havens with fabulous colour palettes and luxurious soft furnishings. Every room is stunning, beautifully styled with incredible attention to detail. There are a mix of kingsize beds and twins, all dressed with crisp cottons and co-ordinating soft furnishings. If you are lucky, you may even enjoy the four poster bed in the Kings Bedroom where you will be mesmerised by the estate views through its vast Palladian windows. Each of the nine ensuite bathrooms enjoys elegant wallpapers, a luxurious ambience, fragrant organic toiletries and fluffy white bathrobes and towels. You will sleep and bathe like kings and queens in exquisite surroundings. The imperial staircase leading from the ground floor to the upper bedrooms is seriously impressive with the most fabulous frescoes decorating the walls.

The grounds of Lothwithiel Manor are totally amazing. Within its lush acres, you can picnic by the lake or wild swim, stroll along grassy banks watching the nearby flocks of sheep, enjoy the shade of ancient trees, sip cocktails on the terrace, enjoy barbecues or family games in the parkland. You can stroll through the deer park watching the grazing fallow deer who have nibbled on the park's lush grass since the days of the Domesday Book and head to the centuries-old trees in the ancient woodland. Adjacent to the deer park is the estate cricket pitch where you can watch one of the regular weekend matches, one of the estate's most popular summertime traditions. The enchanting gardens offer beauty and vibrant colour. The Dorothy Garden boasts beautiful fountains and the Shrubbery offers a multitude of colour pops with thirty four different varieties of hydrangeas and vivid pink and purple rhododendrons and azaleas. The Stewardry Walk offers a palm-fringed paradise and a tropical fountain. The gardens also feature Lady Hamilton's marble bath, a waterfall, a pool, magnolias and a huge array of other exotic plants. The estate's magnificent parkland slopes gently towards the lake offering that true countryside feel. The estate's 'living museum', boasts impressive monuments including the obelisk which soars 123 feet into the sky. You can put your running shoes on and explore the many acres of land listening to birdsong and sheep for company or cycle. You can also enjoy yoga, play tennis or just relax on beautiful outdoor furniture with your holiday read. Children will love foraging for wild garlic to make pesto and blackberries for beloved crumbles. You can also order fresh produce from the kitchen garden for supper. In the autumn, you are welcome to pick apples from the orchard.

Guests staying at Lostwithiel Manor can marry in the estate's 800 year old church, enjoy a civil or humanist ceremony in the house or celebrate with an outdoor wedding in the Dorothy Garden, the Georgian Bathhouse, in a magical spot by the lake or on the lawn. Wedding feasts can be taken in the Smoking Room or outdoors watching the sunset by crackling fire pits. The 14th century church is stunning with ancient stained glass windows and an intimate atmosphere. The estate managers offer a wide range of food and drink options including fine dining, summer barbecues, hearty feasts, cheese and wine stations and party breakfasts. Special options include fireworks, gin and whisky tastings in the drawing room, champagne and oysters served in the fernery and presented in a spectacular 19th century marble ice bath,

tractor trailer rides to admire the night sky on Druid's Hill, croquet on the lawn, trips to the beach and much more. Oliver's Travels feature all of the estate properties so your guests can join in the fun and enjoy the wedding during a holiday.

Children can enjoy a mud kitchen located in the estate grounds, adjacent to a charming Romany caravan, where they can let their imaginations run wild. Additionally, there is an outdoor kitchen tucked away in a picturesque corner of the estate, available for guests to use. The estate also boasts a popular craft space, providing a creative outlet for guests to indulge in various artistic endeavors. For those traveling with their furry friends, dog-friendly stays are gaining popularity, thanks to the miles of woodland tracks and designated off-leash areas where dogs can freely explore. The estate offers a multitude of recreational options, including paddle boards, mountain bikes, and more, ensuring there's something for everyone.

When it comes to food, Lostwithiel Estate goes the extra mile to cater to guests' culinary needs. They can arrange meals for guests from a local deli called Bella Mama, ensuring delicious and convenient dining options. In Lostwithiel, guests can find an excellent butcher and baker, providing access to fresh and high-quality meat and baked goods. The estate is also proud to collaborate with Trewithen, a renowned local dairy known for sourcing their milk from within a 25-mile radius of the estate. This enables guests to enjoy locally sourced milk, butter, yogurt, and clotted cream during their stay.

With acres of ancient woodland and miles of paths and tracks to explore, Lostwithiel Manor is a paradise for four-legged friends.

At Lostwithiel Manor every family member should be included in your travel adventures, and that includes your beloved canine companions. With the understanding of the joy and comfort that comes from traveling with your dog, at this property the owners are thrilled to offer a warm welcome to both of you.

The estate plays host to a number of annual events including a five mile race around the estate in aid of St John's Ambulance Cornwall, an Endurance GB Ride, the south west's premier Cornish ride with over 200 riders, Charity Open Gardens in aid of Cornwall Hospice Care and the Carriage Driving Day sponsored by the British Driving Society. Every event is superb and you will feel privileged to be a participant!

If you can bear to leave this dreamy estate, the charming town of Lostwithiel is just four miles away, nestled in a beautiful wooded valley at the tidal reach of the River Fowey in central Cornwall. From this gorgeous countryside spot, you can visit both the north and south coasts of Cornwall, explore the moors and enjoy the most delicious cuisine imaginable.

Check out the full tour by The Luxury Home Show here:  
(<https://www.youtube.com/watch?v=vXIOQMOYr0&t=778s>)

## Facilities

Wi-Fi/Internet • Tennis Court • Golf Nearby • Eco Friendly (Sustainable) • Cycling • Tennis Nearby • Walking/Hiking Paths • Manor • Cots (Cribs) • Indoor Games • Table Tennis • Rural Location • Instagrammable • Heritage Collection • Country Estate • Supports the local community (locally owned) • Ideal for Babies & Toddlers • Ideal for Kids • Ideal for

Teens • Pets on Request • Satellite TV • Home Cinema • Working  
Fireplace/Woodburner • Heating • High Chair(s) • Parking Space •  
Outstanding Landscapes • Outdoor Pursuit & Activities • Tourist Towns &  
Villages

# Interior & Grounds

## Ground Floor

- Entrance Hall
- Drawing Room with working fireplace
- Bar/Snug Area (also used for events and afternoon tea, can be used as a dining area if needed)
- Kitchen
- Four WC
- Red Victoria Dining Room with working fireplace
- Garden Room (yoga room, can be used for weddings, dining, etc., usually has a table tennis set up)
- Catering Kitchen (availability may vary for different types of bookings)

*Note: There are two staircases, but only one will be open for guest use. However, the other can be used as a fire exit.*

## First Floor

- Gallery
- Library with working fireplace
- Chintz bedroom with double bed
- Chintz bathroom (across the hallway) with freestanding bath
- Madras bedroom with twin beds
- Madras bathroom (across the hallway) with bath
- Lincoln bedroom with double bed
- Lincoln shower room (across the hallway)
- Victorian bedroom with double bed and en-suite bathroom with bath
- King's bedroom with double bed and en-suite bathroom with bath
- Kitchenette (for tea and beverages)

## Second Floor

- Church view bedroom with twin beds
- Church view bathroom (across the hallway) with bath
- Butler's Bedroom with double bed
- Butler's bathroom (across the hallway) with bath
- Lady Maids bedroom with twin beds
- Lady Maid's shower room\*\*
- Love Love bedroom with a double and a single bed
- Love Love bathroom with bath\*



*\*To access the Love Love bedroom and bathroom you walk through Lady Maid's Room*

*\*\*To reach bathroom you walk through Love Love Room*

#### *Exterior Grounds*

- Terrace
- Al fresco dining facilities
- Barbecue
- Large Estate grounds to explore
- Endless walks on the estate through the deer park, around the lake and gardens
- Estate shared tennis court
- Ample parking
- Multiple 22kw EV car chargers

#### **Additional Facilities**

- Super-fast Wi-Fi
- Smart TV
- Pop-up projector for cinema nights in the library
- Board games
- Travel cots & highchairs available on request
- Washing machine & dryer
- Organic toiletries in each bathroom
- Coffee machine
- Paddleboards
- Bikes for hire



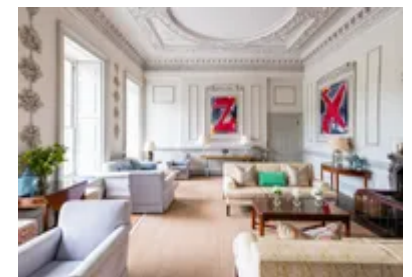
## Location & Local Information

Lostwithiel Manor is located on the fabulous Lostwithiel Manor Estate with its acres of parkland, deer park, woodland, lakes and stunning gardens. The estate is wondrous with spectacular scenery and brilliant spots of picnics and relaxing. Guests are welcome to enjoy wild swimming in the lake and to forage or pick produce from the kitchen garden. Close by, you can enjoy Talland Bay and Lansallos Beach for a quick dip or venture further to the beautiful beaches on the north or south coast of Cornwall. The estate is brilliant for walking and cycling plus there are many stunning areas to discover outside of the estate.

Cornwall is known as a foodie paradise and there are plenty of places close by where you can enjoy delicious goodies and meals. There are also a number of food festivals including the St Ives Food and Drink Festival, Truro Food Festival and the Mevagissey Shanty Festival.

Restormel Castle lies by the River Fowey near Lostwithiel. One of the four chief Norman castles of Cornwall, it is notable for its perfectly circular design. Once a luxurious residence of the Earl of Cornwall, it was ruined by the 16th century and is now under the supervision of the English Heritage. It is a beautiful picnic spot.

A trip down to Fowey is a must! The Fowey estuary is a glorious sight with Fowey on one side at the mouth of the River Fowey and the gorgeous town of Polruan on the other. There are regular passenger ferries to and from Polruan and a car ferry to Boddinick. The ferry house was originally the du Maurier family home and later the home of Angela du Maurier, Daphne's sister. As well as being incredibly pretty, Fowey enjoys a rich history. During the Second World War, Fowey was the centre for air-sea rescue and one of the places from which the D-Day invasions were launched. St Catherine's Point is on the Fowey side of the harbour entrance where it functioned as a lighthouse in medieval times. St Catherine's Castle below was built during the reign of Henry VIII to defend the harbour entrance. It is accessible when walking from the



pretty Ready money Cove. On Fore Street you will find the Old House of Foye, a medieval house built in 1430. It is now a shop but the walls, beamed interior and fireplace are pretty much the same. During the summer, Fowey Town Hall's museum and small aquarium is open. Daphne du Maurier is celebrated with the Du Maurier Festival each May and at the Literacy Centre next to the church.

There are some amazing sandy beaches on the south coast. Par Sands, close to the village of Par and four miles from St Austell, boasts a huge expanse of sand backed by pretty dunes. Polkerris Beach magically combines an idyllic sandy cove and stunning coastline with an array of entertaining watersports. You can stand up paddleboard, learn to sail and windsurf, explore the coastline in a kayak or simply enjoy exploring the rock pools and building sandcastles. There is a wonderful beach restaurant and waterside pub. The National Trust's dreamy Lantic Bay is a great spot for paddling and for a picnic. It is well worth the climb back up and the views from the top are amazing. To the North, the surfers favourite, Newquay, is less than a 50-minute drive while popular Padstow is also within easy reach. The traditional fishing village of Port Isaac, best known for being the setting off the popular TV series Doc Martin, is also less than an hour away.

Mevagissey lies within a UNESCO Area of Outstanding Natural Beauty. It is another working harbour, nestled on the unspoilt dramatic Cornish coastline. Mevagissey boasts an aquarium, museum, seafood restaurants, atmospheric pubs, watersports, beautiful gardens, cycle trails and much more. You can walk from the town to the stunning Lost Gardens of Heligan.

### Local Amenities

Nearest Beach	Polperro Beach (15.4km)
Nearest Golf	Lanhydrock Golf Club (13 km)
Nearest Restaurant	Asquiths Restaurant, Lostwithiel (5.8km)



Nearest Supermarket	Co-Op Food, Lostwithiel (6.2km)
Nearest Town/City	Lostwithiel (6.6km)
Nearest Train Station	Liskeard (16 km)

## What we love

- The interior design of Lostwithiel Manor by Sarah Fortescue Designs is absolutely stunning. Not only does every room in the manor house enjoy fabulous estate views, the interiors are beautiful, atmospheric, lavish, full of vibrant colour, superbly comfortable and exquisite in their detailing
- Lostwithiel Manor has served as the backdrop for numerous productions, including *The Three Musketeers*, *My Cousin Rachel*, and *Delicious* starring Dawn French, but it is perhaps best known as the setting for the BBC's 1970s series *Poldark*.
- The Lothwithiel Manor Estate is phenomenal offering an endless list of activities and features including a deer park, lake, stunning landscaped gardens, parkland, walking and cycling trails, woodland and ancient monuments
- Lostwithiel Manor is a fantastic wedding or special celebration venue with sensational entertainment spaces. The manor house sleeps up to eighteen guests and the estate boasts other properties sleeping many other guests. How amazing to have all of your wedding guests staying on-site for days of preparation and celebrations!

## What you should know...

- Though your furry friends are allowed to join you on your holiday, please do not allow them upstairs and please keep them off the exquisite furniture
- The estate grounds and tennis court are shared with guests staying at the other properties on the estate. However, Lostwithiel Manor enjoys much privacy and there are acres of grounds to share!
- Please let us know if you are looking for a wedding venue, if you are interested in any of the additional services offered or if you are interested in booking more than one property on the estate
- Guests deciding on wild swimming in the lake do so at their own risk

# Terms & Conditions

- **Security deposit:** Credit card details are required 2 weeks prior to departure for pre-authorisation
- **Arrival time:** 4pm
- **Departure time:** 10am
- **Energy costs included?:** Yes, included in the rental price
- **Linen & towels included?:** Yes, included in the rental price. (Due to Covid, guests are currently being asked to strip the beds before departure.)
- **Pets welcome?:** A maximum of 2 well-behaved dogs are allowed on request at time of booking, for an additional charge of £22 per dog, per stay. Please note that the dogs must stay downstairs.
- **Changeover day:** Friday or Monday
- **End of stay cleaning available?:** Yes, included in the rental price
- **Smoking Allowed?:** No smoking
- **Minimum stay:** Please note that there is a 3-night minimum stay, this may be increased to 7-nights across peak dates
- **Internet access?:** Yes, Wi-Fi is included in the rental price

## Pet rules:

The owner ask that dogs are kept on leads in certain areas of the estate where livestock and deer are roaming. The owner provides the following in our accommodation:

Dog bowls and biscuits as well as poo bags

Information on local walks available on request