

# Lostwithiel Stable House

**Region:** The South West   **Sleeps:** 4

---

## Overview

Designed by the master architect Sir John Soane, the gorgeous Lostwithiel Stable House sits proudly in the heart of the fantastic Lostwithiel Manor Estate, deep in the Cornish countryside. This beautifully restored building enjoys a gorgeous setting in the estate stable yard surrounded by glorious landscaped gardens, a lake, deer park, parkland, fascinating historic monuments, miles of cycling and hiking tracks, orchards and a tennis court. With two delightful bedrooms, Lostwithiel Stable House is perfect for a family or two couples wanting to explore the south and north coasts of Cornwall and the moors. There are other holiday properties on the estate including the incredible Grade II listed Lostwithiel Manor which sleeps up to eighteen guests, the 18th century Lostwithiel Stewardry which sleeps up to fourteen guests, Lostwithiel House which sleeps six and Lostwithiel Dairy House which sleeps eight guests. If you are celebrating a special event or planning a family reunion, each of the properties can be booked with Oliver's Travels. Lostwithiel Manor is a fantastic wedding and entertainment venue. The list of estate activities for all guests staying in the properties is endless.

The charming town of Lostwithiel is just four miles from Lostwithiel Stable House, nestled in a beautiful wooded valley at the tidal reach of the River Fowey in central Cornwall. From this gorgeous countryside spot, guests can visit both the north and south coasts of Cornwall, explore the moors and enjoy the most delicious cuisine imaginable. Local to Lostwithiel Manor Estate, guests can take dips at Talland Bay and Lansallos Beach and visit Fowey, Polruan, Par Sands, St Austell, Mevagissey, the Lost Gardens of Heligan, Restormel Castle and the iconic Eden Project.

Within this unique, beautifully renovated property, you will discover vivid splashes of colour, sumptuous furnishings, gorgeous fabrics and excellent fittings. The brilliant Sarah Fortescue Designs have certainly delivered, ensuring that you will feel indulged and superbly comfortable within the eclectic, sophisticated and fun interiors. The open plan living and dining room is characterful, spacious and the ideal spot to curl up in, in front of the roaring log burner. A smart television and board games are provided for entertainment. The modern kitchen is fully-equipped for your self-catering stay and laundry facilities can be found in the stable yard. You can also enjoy alfresco meals using the Weber barbecue on the terrace.

This cosy cottage also comes with two well-appointed bedroom suites, one with a sumptuous kingsize bed dressed with crisp cottons and the other with comfy twins, also enjoying crisp cottons and beautiful soft furnishings. Each of the two immaculate ensuite bathrooms comes with luxurious organic toiletries and fluffy white bathrobes and towels, making you feel spoilt and special.

Discover within your stay the eco-friendly charm of Lostwithiel Stable House, boasting reduced CO2 production, setting it apart from other properties across the country.



The estate grounds are truly sensational. The lake is stunning, surrounded by grassy banks, nearby flocks of sheep and ancient trees. You may want to enjoy a lakeside barbecue or perhaps evening cocktails by the lake. You can stroll through the deer park watching the grazing fallow deer who have nibbled on the park's lush grass since the days of the Domesday Book and head to the centuries-old trees in the ancient woodland. Adjacent to the deer park is the estate cricket pitch where you can watch one of the regular weekend matches, one of the estate's most popular summertime traditions. The gardens are totally captivating. The Dorothy Garden boasts beautiful fountains and the Shrubbery offers a multitude of vibrant colour with thirty four different varieties of hydrangeas and vivid pink and purple rhododendrons and azaleas. The Stewardry Walk offers a palm-fringed paradise and a tropical fountain. The gardens also feature Lady Hamilton's marble bath, a waterfall, a pool, magnolias and a huge array of other exotic plants. The estate's magnificent parkland slopes gently towards the lake offering that true countryside feel. Here you can enjoy picnics and bask in the sun. You can also explore the exquisite 'living museum', discovering the estate's impressive monuments including the obelisk which soars 123 feet into the sky. You can put your running shoes on and explore the many acres of land listening to birdsong and sheep for company. You can cycle, enjoy yoga, play tennis or just rest with your holiday book. Children love foraging for wild garlic to make pesto and blackberries for beloved crumbles. You can also order fresh produce from the kitchen garden for supper. In the autumn, you are welcome to pick apples from the orchard.

Children can enjoy a mud kitchen located in the estate grounds, adjacent to a charming Romany caravan, where they can let their imaginations run wild. Additionally, there is an outdoor kitchen tucked away in a picturesque corner of the estate, available for guests to use. The estate also boasts a popular craft space, providing a creative outlet for guests to indulge in various artistic endeavors. For those traveling with their furry friends, dog-friendly stays are gaining popularity, thanks to the miles of woodland tracks and designated off-leash areas where dogs can freely explore. The estate offers a multitude of recreational options, including paddle boards, mountain bikes, and more, ensuring there's something for everyone.

When it comes to food, Lostwithiel Estate goes the extra mile to cater to guests' culinary needs. They can arrange meals for guests from a local deli called Bella Mama, ensuring delicious and convenient dining options. In Lostwithiel, guests can find an excellent butcher and baker, providing access to fresh and high-quality meat and baked goods. The estate is also proud to collaborate with Trewithen, a renowned local dairy known for sourcing their milk from within a 25-mile radius of the estate. This enables guests to enjoy locally sourced milk, butter, yogurt, and clotted cream during their stay.

With acres of ancient woodland and miles of paths and tracks to explore, Lostwithiel Stable House is a paradise for four-legged friends. At Lostwithiel Stable House every family member should be included in your travel adventures, and that includes your beloved canine companions. With the understanding of the joy and comfort that comes from traveling with your dog, at this property the owners are thrilled to offer a warm welcome to both of you.

The estate plays host to a number of annual events including a five mile race around the estate in aid of St John's Ambulance Cornwall, an Endurance GB Ride, the south west's premier Cornish ride with over 200 riders, Charity Open Gardens in aid of Cornwall Hospice Care and the Carriage Driving Day

sponsored by the British Driving Society. Every event is wonderful and you will feel privileged to be there!

## Facilities

Wi-Fi/Internet • Cots (Cribs) • Indoor Games • Eco Friendly (Sustainable) • Heritage Collection • Country Estate • Supports the local community (locally owned) • Ideal for Babies & Toddlers • Ideal for Kids • Ideal for Teens • Pets on Request • All Bedrooms En-Suite • Smart TV • High Chair(s) • Outstanding Landscapes • Outdoor Pursuit & Activities • Tourist Towns & Villages

# Interior & Grounds

## *Ground Floor*

- Living room
- Fully-equipped kitchen with dishwasher
- Cloakroom

## *First Floor*

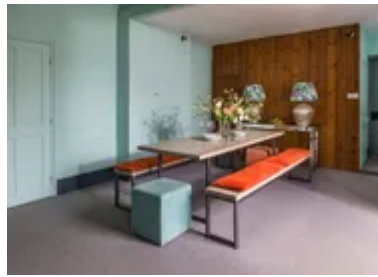
- Bedroom with double bed
- Family shower room
- Bedroom with twin single beds and en-suite bathroom

## *Exterior Grounds*

- Outdoor furniture for summer dining
- Weber barbecue
- Shared tennis court within the grounds
- Endless walks on the estate
- Views over the Stable Yard
- Parking

## **Additional Facilities**

- Super-fast Wi-Fi
- Smart TV
- Travel cots & highchairs available on request
- Organic toiletries in each bathroom
- Shared games room within the Estate
- Laundry facilities in the Stable Yard
- Coffee machine
- Paddleboards
- Bikes for hire





## Location & Local Information

Lostwithiel Stable House is located on the fabulous Lostwithiel Manor Estate with its acres of parkland, deer park, woodland, lakes and stunning gardens. The estate is wondrous with spectacular scenery and brilliant spots of picnics and relaxing. Guests are welcome to enjoy wild swimming in the lake and to forage or pick produce from the kitchen garden. Close by, you can enjoy Talland Bay and Lansallos Beach for a quick dip or venture further to the beautiful beaches on the north or south coast of Cornwall. The estate is brilliant for walking and cycling plus there are many stunning areas to discover outside of the estate.

Cornwall is known as a foodie paradise and there are plenty of places close by where you can enjoy delicious goodies and meals. There are also a number of food festivals including the St Ives Food and Drink Festival, Truro Food Festival and the Mevagissey Shanty Festival.

Restormel Castle lies by the River Fowey near Lostwithiel. One of the four chief Norman castles of Cornwall, it is notable for its perfectly circular design. Once a luxurious residence of the Earl of Cornwall, it was ruined by the 16th century and is now under the supervision of the English Heritage. It is a beautiful picnic spot.

A trip down to Fowey is a must! The Fowey estuary is a glorious sight with Fowey on one side at the mouth of the River Fowey and the gorgeous town of Polruan on the other. There are regular passenger ferries to and from Polruan and a car ferry to Boddinick. The ferry house was originally the du Maurier family home and later the home of Angela du Maurier, Daphne's sister. As well as being incredibly pretty, Fowey enjoys a rich history. During the Second World War, Fowey was the centre for air-sea rescue and one of the places from which the D-Day invasions were launched. St Catherine's Point is on the Fowey side of the harbour entrance where it functioned as a lighthouse in medieval times. St Catherine's Castle below was built during the reign of Henry VIII to defend the harbour entrance. It is accessible when walking from the



pretty Readymoney Cove. On Fore Street you will find the Old House of Foye, a medieval house built in 1430. It is now a shop but the walls, beamed interior and fireplace are pretty much the same. During the summer, Fowey Town Hall's museum and small aquarium is open. Daphne du Maurier is celebrated with the Du Maurier Festival each May and at the Literacy Centre next to the church.

There are some amazing sandy beaches on the south coast. Par Sands, close to the village of Par and four miles from St Austell, boasts a huge expanse of sand backed by pretty dunes. Polkerris Beach magically combines an idyllic sandy cove and stunning coastline with an array of entertaining watersports. You can stand up paddleboard, learn to sail and windsurf, explore the coastline in a kayak or simply enjoy exploring the rock pools and building sandcastles. There is a wonderful beach restaurant and waterside pub. The National Trust's dreamy Lantic Bay is a great spot for paddling and for a picnic. It is well worth the climb back up and the views from the top are amazing. To the North, the surfers favourite, Newquay, is less than a 50-minute drive while popular Padstow is also within easy reach. The traditional fishing village of Port Isaac, best known for being the setting off the popular TV series Doc Martin, is also less than an hour away.

Mevagissey lies within a UNESCO Area of Outstanding Natural Beauty. It is another working harbour, nestled on the unspoilt dramatic Cornish coastline. Mevagissey boasts an aquarium, museum, seafood restaurants, atmospheric pubs, watersports, beautiful gardens, cycle trails and much more. You can walk from the town to the stunning Lost Gardens of Heligan.

## Local Amenities

Nearest Town	Lostwithiel (6.6km)
Nearest Restaurant	Asquiths Restaurant, Lostwithiel (5.8km)
Nearest Supermarket	Co-Op Food, Lostwithiel (6.2km)

Nearest Golf	<b>Lostwithiel Golf Club</b> <b>(5.9km)</b>
Nearest Beach	<b>Polperro Beach</b> <b>(15.4km)</b>
Nearest Train Station	<b>Liskeard</b> <b>(16 km)</b>

## What we love

- The interior design of Lostwithiel Stable House by Sarah Fortescue Designs is absolutely fabulous. It is bright, fun, colourful and inspired by the surrounding nature
- The Lothwithiel Manor Estate is incredible with an endless list of activities and features including a deer park, lake, stunning landscaped gardens, parkland, trails, woodland and hidden monuments
- Lostwithiel Stable House is the perfect Cornish retreat, located in Central Cornwall within easy reach of the north and south coast and many of its charming towns and villages

## What you should know...

- The estate grounds, games room and tennis court are shared with guests staying at the manor houses and the other cottages. However there are acres of grounds to share so you will never feel on top of each other!
- Oliver's Travels features all of the properties on the estate if you want to ask other friends or family to join you



# Terms & Conditions

- **Security deposit:** Credit card details are required 2 weeks prior to departure for pre-authorisation
- **Arrival time:** 4pm
- **Departure time:** 10am
- **Energy costs included?:** Yes, included in the rental price
- **Linen & towels included?:** Yes, included in the rental price
- **Pets welcome?:** A maximum of 2 well-behaved dogs are allowed on request at time of booking, for an additional charge of £15 per dog, per stay. Please note that the dogs must stay downstairs.
- **Other Ts and Cs:** The wider grounds and tennis court are shared with the Estate's other holiday cottages however your group will retain plenty of privacy.
- **Changeover day:** Friday or Monday
- **End of stay cleaning available?:** Yes, included in the rental price. Due to Covid, guests are currently being asked to strip the beds prior to departure.
- **Minimum stay:** Please note that there is a 3-night minimum stay, this may be increased to 7-nights across peak dates
- **Internet access?:** Yes, Wi-Fi is included in the rental price

Pet rules:

The owner ask that dogs are kept on leads in certain areas of the estate where livestock and deer are roaming. The owner provides the following in our accommodation:

Dog bowls and biscuits as well as poo bags

Information on local walks available on request