

Lostwithiel Dairy House

Region: The South West **Sleeps:** 8

Overview

With sensational views and utter tranquility, Lostwithiel Dairy House, sleeps up to eight guests in luxurious, fun surroundings on the magnificent Lostwithiel Manor Estate which is located close to Lostwithiel. This four bedroom boutique country hideaway has been brilliantly refurbished by Sarah Fortescue to offer playful décor and beautiful local furnishings together with some from around the globe. There are vibrant splashes of colour, strong bold colours and quirky artistic touches alongside classic Lostwithiel toile and a dining table made from oak sourced directly from the estate. The house is surrounded by glorious landscaped gardens, a lake, deer park, parkland, fascinating historic monuments, miles of cycling and hiking tracks, orchards and a tennis court. Lostwithiel Dairy House is perfect for a family or friends wanting to explore the south and north coasts of Cornwall, popular seaside towns and the captivating moors. There are other holiday properties on the estate including the fabulous Grade II listed Lostwithiel Manor which sleeps up to eighteen guests, the 18th century Lostwithiel Stewardry which sleeps up to fourteen guests, Lostwithiel Stable House which sleeps four and Lostwithiel House which sleeps six guests. If you are celebrating a special event or planning a family reunion, each of the properties can be booked with Oliver's Travels. Lostwithiel Manor is a fantastic wedding and entertainment venue. The list of estate activities for all guests staying in the properties is endless.

Discover the eco-friendly charm of Lostwithiel Dairy House, boasting reduced CO2 production, setting it apart from other properties across the country.

Here, you can breathe the freshest of air, walk for miles, play tennis, take a wild swim in the lake, enjoy the simplicity of picnics in the parkland, spend time watching the sheep and deer, enjoy some friendly competition in the games room, enjoy a lakeside barbecue, drink cocktails by the lake or admire the beautiful formal gardens. You can stroll through the deer park watching the grazing fallow deer who have nibbled on the park's lush grass since the days of the Domesday Book and head to the centuries-old trees in the ancient woodland. Adjacent to the deer park is the estate cricket pitch where you can watch one of the regular weekend matches, one of the estate's most popular summertime traditions. The Dorothy Garden boasts beautiful fountains and the Shrubbery offers a multitude of vibrant colour with thirty four different varieties of hydrangeas and vivid pink and purple rhododendrons and azaleas. The Stewardry Walk offers a palm-fringed paradise and a tropical fountain. The gardens also feature Lady Hamilton's marble bath, a waterfall, a pool, magnolias and a huge array of other exotic plants. The estate's magnificent parkland slopes gently towards the lake offering that true countryside feel. You can also explore the exquisite 'living museum', discovering the estate's impressive monuments including the obelisk which soars 123 feet into the sky. You can put your running shoes on and explore the many acres of land listening to birdsong and sheep for company. You can cycle, enjoy yoga, dine alfresco using your Weber



barbecue or just relax with your holiday book. Children love foraging for wild garlic to make pesto and blackberries for beloved crumbles. You can also order fresh produce from the kitchen garden for supper. In the autumn, you are welcome to pick apples from the orchard. Your furry friend is welcome to join you on request so long as keep him or her off the beds and other furniture.

The charming town of Lostwithiel is just four miles from Lostwithiel Dairy House, nestled in a beautiful wooded valley at the tidal reach of the River Fowey in central Cornwall. From this gorgeous countryside spot, guests can visit both the north and south coasts of Cornwall, explore the moors and enjoy the most delicious cuisine imaginable. Local to Lostwithiel Manor Estate, guests can take dips at Talland Bay and Lansallos Beach and visit Fowey, Polruan, Par Sands, St Austell, Mevagissey, the Lost Gardens of Heligan, Restormel Castle and the iconic Eden Project.

Lostwithiel Dairy House enjoys a fabulous vantage point on the estate with spectacular countryside and estate views. The house is characterful, colourful and very comfortable. Within this unique, beautifully renovated property, you will discover vivid splashes of colour, sumptuous furnishings, gorgeous fabrics and excellent fittings. The living room enjoys a fabulous ambience all in bold blue and with contrasting fabrics, artworks and furniture. It is so cosy and leads directly to a stylish dining room with its beautiful table and bench seating. The kitchen is quirky and super cool with its red and mint green cabinetry. There is a breakfast bar and stools so that the chef in your group can enjoy company while preparing a delicious feast. To the side of the kitchen is a handy boot room for coats, wellies and your furry friend.

One of the bedrooms is located downstairs with its smart and stylish ensuite bathroom. Like all the bedrooms, the comfy bed is dressed with luxurious crisp cottons and beautiful soft furnishings. The remaining three bedrooms are upstairs, all beautiful and all enjoying stunning fabrics and beautiful art. Sarah Fortescue Designs have done a brilliant job, making sure you are comfortable and feel pampered. The attention to detail and contrasting colours make this cottage fun and out of the ordinary. One of the upstairs bedrooms boasts an ensuite bathroom and guests staying in the other two rooms share a family bathroom. The stylish bathrooms come with luxurious organic toiletries and fluffy white bathrobes and towels.

You can enjoy a glass of your favourite tipple and alfresco meals using the Weber barbecue on the terrace and roam this beautiful estate, enjoying the wildlife and scenery.

To make your holiday even more special, the estate's local partners offer mountain and electric bike hire, yoga instruction, tennis coaching and sports rehab, sports massage, personal training and fitness classes. The estate also boasts its own private chef who can cater for special events.

The estate plays host to a number of annual events including a five mile race around the estate in aid of St John's Ambulance Cornwall, an Endurance GB Ride, the south west's premier Cornish ride with over 200 riders, Charity Open Gardens in aid of Cornwall Hospice Care and the Carriage Driving Day sponsored by the British Driving Society. Every event is just fabulous and you will feel privileged to be there!

Lostwithiel Estate offers a range of on-site activities and amenities to enhance guests' experience. Children can enjoy a mud kitchen located in the estate grounds, adjacent to a charming Romany caravan, where they can let

their imaginations run wild. Additionally, there is an outdoor kitchen tucked away in a picturesque corner of the estate, available for guests to use. The estate also boasts a popular craft space, providing a creative outlet for guests to indulge in various artistic endeavors. The estate offers a multitude of recreational options, including paddle boards, mountain bikes, and more, ensuring there's something for everyone.

With acres of ancient woodland and miles of paths and tracks to explore, Lostwithiel Dairy House is a paradise for four-legged friends.

At Lostwithiel Dairy House every family member should be included in your travel adventures, and that includes your beloved canine companions. With the understanding of the joy and comfort that comes from traveling with your dog, at this property the owners are thrilled to offer a warm welcome to both of you.

When it comes to food, Lostwithiel Estate goes the extra mile to cater to guests' culinary needs. They can arrange meals for guests from a local deli called Bella Mama, ensuring delicious and convenient dining options. In Lostwithiel, guests can find an excellent butcher and baker, providing access to fresh and high-quality meat and baked goods. The estate is also proud to collaborate with Trewithen, a renowned local dairy known for sourcing their milk from within a 25-mile radius of the estate. This enables guests to enjoy locally sourced milk, butter, yogurt, and clotted cream during their stay.

Facilities

Wi-Fi/Internet • Washing Machine • Villa • Eco Friendly (Sustainable) • Ideal for Xmas/NY • Walking/Hiking Paths • Ground Floor Bed & Bath • Rural Location • Cots (Cribs) • Quirky (Unique) • Heritage Collection • Country Estate • Supports the local community (locally owned) • Ideal for Babies & Toddlers • Ideal for Kids • Ideal for Teens • Pets on Request • Tumble Dryer • Smart TV • Heating • High Chair(s) • Outstanding Landscapes • Outdoor Pursuit & Activities • Tourist Towns & Villages

Interior & Grounds

Ground Floor

- Living room
- Fully-equipped kitchen with dining facilities
- Bedroom with double bed and en-suite shower room (*fully wheelchair accessible with adapted shower room*)

First Floor

- Bedroom with double bed and en-suite shower room
- Bedroom with double bed
- Bedroom with double bed
- Family shower room

Exterior Grounds

- Weber barbecue
- Al fresco dining facilities
- Shared tennis court within the grounds
- Impressive views across the parkland
- Endless walks on the Estate through the deer park, around the lake and gardens
- Ample parking
- Multiple 22kw EV car chargers

Additional Facilities

- Super-fast Wi-Fi
- Smart TV
- Board games
- Travel cots & highchairs available on request
- Washing machine & dryer
- Organic toiletries in each bathroom
- Coffee machine
- Paddleboards
- Bikes for hire



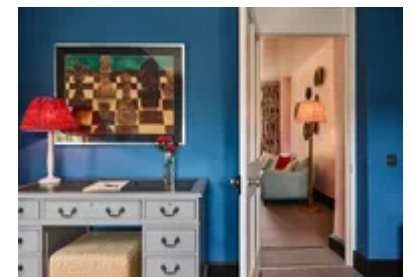
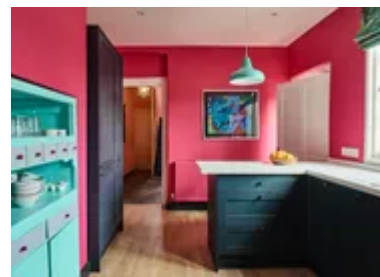
Location & Local Information

Lostwithiel Dairy House is located on the fabulous Lostwithiel Manor Estate with its acres of parkland, deer park, woodland, lakes and stunning gardens. The estate is wondrous with spectacular scenery and brilliant spots of picnics and relaxing. Guests are welcome to enjoy wild swimming in the lake and to forage or pick produce from the kitchen garden. Close by, you can enjoy Talland Bay and Lansallos Beach for a quick dip or venture further to the beautiful beaches on the north or south coast of Cornwall. The estate is brilliant for walking and cycling plus there are many stunning areas to discover outside of the estate.

Cornwall is known as a foodie paradise and there are plenty of places close by where you can enjoy delicious goodies and meals. There are also a number of food festivals including the St Ives Food and Drink Festival, Truro Food Festival and the Mevagissey Shanty Festival.

Restormel Castle lies by the River Fowey near Lostwithiel. One of the four chief Norman castles of Cornwall, it is notable for its perfectly circular design. Once a luxurious residence of the Earl of Cornwall, it was ruined by the 16th century and is now under the supervision of the English Heritage. It is a beautiful picnic spot.

A trip down to Fowey is a must! The Fowey estuary is a glorious sight with Fowey on one side at the mouth of the River Fowey and the gorgeous town of Polruan on the other. There are regular passenger ferries to and from Polruan and a car ferry to Boddinick. The ferry house was originally the du Maurier family home and later the home of Angela du Maurier, Daphne's sister. As well as being incredibly pretty, Fowey enjoys a rich history. During the Second World War, Fowey was the centre for air-sea rescue and one of the places from which the D-Day invasions were launched. St Catherine's Point is on the Fowey side of the harbour entrance where it functioned as a lighthouse in medieval times. St Catherine's Castle below was built during the reign of Henry VIII to defend the harbour entrance. It is accessible when walking from the



pretty Readymoney Cove. On Fore Street you will find the Old House of Foye, a medieval house built in 1430. It is now a shop but the walls, beamed interior and fireplace are pretty much the same. During the summer, Fowey Town Hall's museum and small aquarium is open. Daphne du Maurier is celebrated with the Du Maurier Festival each May and at the Literacy Centre next to the church.

There are some amazing sandy beaches on the south coast. Par Sands, close to the village of Par and four miles from St Austell, boasts a huge expanse of sand backed by pretty dunes. Polkerris Beach magically combines an idyllic sandy cove and stunning coastline with an array of entertaining watersports. You can stand up paddleboard, learn to sail and windsurf, explore the coastline in a kayak or simply enjoy exploring the rock pools and building sandcastles. There is a wonderful beach restaurant and waterside pub. The National Trust's dreamy Lantic Bay is a great spot for paddling and for a picnic. It is well worth the climb back up and the views from the top are amazing. To the North, the surfers favourite, Newquay, is less than a 50-minute drive while popular Padstow is also within easy reach. The traditional fishing village of Port Isaac, best known for being the setting off the popular TV series Doc Martin, is also less than an hour away.

Mevagissey lies within a UNESCO Area of Outstanding Natural Beauty. It is another working harbour, nestled on the unspoilt dramatic Cornish coastline. Mevagissey boasts an aquarium, museum, seafood restaurants, atmospheric pubs, watersports, beautiful gardens, cycle trails and much more. You can walk from the town to the stunning Lost Gardens of Heligan.

Local Amenities

Nearest Town/City	Lostwithiel (6.6km)
Nearest Restaurant	Asquiths Restaurant, Lostwithiel (5.8km)
Nearest Supermarket	Co-Op Food, Lostwithiel (6.2km)

Nearest Golf	Lostwithiel Golf Club (5.9km)
Nearest Beach	Polperro Beach (15.4km)
Nearest Train Station	Liskeard (16 km)

What we love

- Lostwithiel Dairy House holds a wonderful vantage point with guests enjoying impressive views over the parkland and surrounding countryside
- The Lothwithiel Manor Estate is incredible with an endless list of activities and features including a deer park, lake, stunning landscaped gardens, parkland, trails, woodland and hidden monuments
- Lostwithiel Dairy House is the perfect Cornish retreat for families or friends, located in Central Cornwall within easy reach of the north and south coast, the moors and some excellent attractions
- The interior design of Lostwithiel House by Sarah Fortescue Designs is absolutely fabulous. It is bright, fun, colourful, inspired by the surrounding nature and compliments the characterful architecture

What you should know...

- The estate grounds, games room and tennis court are shared with guests staying at the manor houses and the other cottages. However there are acres of grounds to share so you will never feel on top of each other!
- Oliver's Travels features all of the properties on the estate if you want to ask other friends or family to join you

Terms & Conditions

- **Security deposit:** Credit card details are required 2 weeks prior to departure for pre-authorisation
- **Arrival time:** 4pm
- **Departure time:** 10am
- **Energy costs included?:** Yes, included in the rental price
- **Linen & towels included?:** Yes, included in the rental price. Due to Covid, guests are currently being asked to strip the beds prior to departure.
- **Pets welcome?:** A maximum of 2 well-behaved dogs are allowed on request at time of booking, for an additional charge of £22 per dog, per stay. Please note that the dogs must stay downstairs.
- **Other Ts and Cs:** The wider grounds and tennis court are shared with the Estate's other holiday cottages however you will retain plenty of privacy
- **Changeover day:** Friday or Monday
- **End of stay cleaning available?:** Yes, included in the rental price
- **Smoking Allowed?:** No smoking
- **Minimum stay:** Please note that there is a 3-night minimum stay, this may be increased to 7-nights across peak dates
- **Internet access?:** Yes, Wi-Fi is included in the rental price

Pet rules:

The owner ask that dogs are kept on leads in certain areas of the estate where livestock and deer are roaming. The owner provides the following in our accommodation:

- Dog bowls and biscuits as well as poo bags
- Information on local walks available on request