

Lostwithiel Stewardry

Region: The South West **Sleeps:** 14

Overview

Set deep in the rolling Cornish countryside, Lostwithiel Stewardry lies at the heart of the remarkable Lostwithiel Manor Estate, where ancient woodlands, vibrant gardens and sweeping parkland stretch as far as the eye can see. Hidden in a secluded valley yet just four miles from the historic town of Lostwithiel, this beautifully reimagined eighteenth-century manor house offers a setting of rare charm and grandeur. Behind its handsome Georgian façade, bold colours and rich textures unfold across lavishly designed interiors by Sarah Fortescue, where nature-inspired wallpapers and elegant furnishings echo the beauty of the estate's gardens.

Sleeping up to fourteen guests across seven luxurious en-suite bedrooms, Lostwithiel Stewardry is as vibrant as it is refined. Each bedroom boasts its own distinctive palette, plush fabrics and crisp cotton bedding, while the bathrooms are appointed with modern fittings, organic toiletries and soft white robes. The living spaces are equally impressive. Expansive, light-filled and effortlessly stylish, they flow from one to the next, with a large drawing room centred around a roaring fireplace, window seats overlooking the gardens and smaller nooks perfect for quiet reading or conversation. A striking kitchen, with its deep blue cabinetry, warm wood accents and large island, opens onto an elegant dining room with a circular table that invites long, lingering meals.

Throughout the house, thoughtful touches such as Sonos speakers, board games and table tennis ensure a stay that feels both luxurious and welcoming. Outside, the delights of the estate await. Guests can stroll through subtropical gardens, explore the deer park, or enjoy lakeside barbecues as the sun sets behind the trees. A fire pit and outdoor kitchen create an idyllic setting for evenings under the stars. Children can run wild in the mud kitchen or let their imaginations roam in the creative craft space, while dogs will love the miles of woodland trails and off-lead areas.

For special celebrations, family gatherings or simply a restorative countryside escape, Lostwithiel Stewardry offers not just a place to stay but a complete Cornish experience. With farm-fresh produce, private chef services, and access to the estate's calendar of events, every detail is in place for a memorable and meaningful retreat.

Facilities

Golf Nearby • Ideal for Kids • Eco Friendly (Sustainable) • Walking/Hiking Paths • Pets on Request • Manor • Cots (Cribs) • Ideal for Teens • Instagrammable • Parking Space • Wi-Fi/Internet • Country Estate • BBQ • Rural Location • Washing Machine • Coffee Machine • Hairdryer • Table Tennis • Tumble Dryer • Electric Car Charger • Working



Interior & Grounds

Stewardry Interiors

Ground Floor

- Sitting room
- Drawing room
- Study
- Fully-equipped kitchen with coffee machine
- Reception hall with dining facilities
- Cloakroom

First Floor

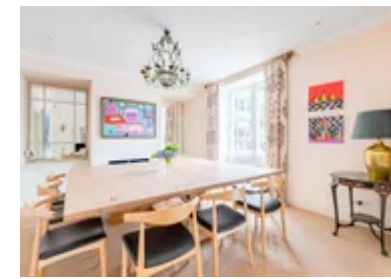
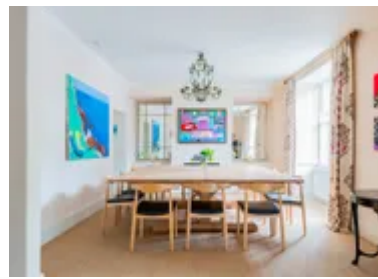
- 5 x double bedrooms with en-suite bathrooms
- 2 x twin bedrooms
- Family bathroom
- Family shower room

Outside Grounds

- Webber barbecue and outdoor furniture for summer dining
- Outdoor kitchen
- Large Estate grounds to explore
- Endless walks on the estate through the deer park, around the lake and gardens
- Estate shared tennis court
- Games room in the Stable Yard
- Plenty of parking

Additional Facilities

- Super-fast Wi-Fi
- Smart TV
- Washing machine & dryer
- EV charger
- Paddleboards



Location & Local Information

Nestled within the majestic Lostwithiel Manor Estate, Lostwithiel Stewardry is surrounded by sweeping parkland, tranquil lakes, and ancient woodland, offering a peaceful escape into nature. Guests can enjoy wild swimming, foraging in the kitchen garden, or picnicking among the estate’s beautifully kept grounds and scenic walking trails.

Just minutes away, the historic town of Lostwithiel offers charming cafés, antique shops, and a relaxed riverside atmosphere. Nearby Restormel Castle, with its unique circular design, makes a lovely stop for history lovers. A little further, you'll find the soft sands of Par Beach, the watersports haven of Polkerris, and the dramatic beauty of Lantic Bay.

The harbour town of Fowey is perfect for a day out, with its pretty estuary views, boutique shops, and literary links to Daphne du Maurier. Mevagissey, a traditional fishing village, offers a bustling harbour, fresh seafood, and access to the celebrated Lost Gardens of Heligan.

Local Amenities

Nearest Town/City	Lostwithiel (6.6km)
Nearest Restaurant	Asquiths Restaurant, Lostwithiel (5.8km)
Nearest Supermarket	Co-Op Food, Lostwithiel (6.2km)
Nearest Golf	Lostwithiel Golf Club (5.9km)
Nearest Beach	Polperro Beach (15.4km)
Nearest Train Station	Liskeard (16 km)



What we love

- The interior design by Sarah Fortescue Designs is absolutely fabulous. It is bright, colourful, inspired by the estate gardens and makes you feel very happy
- The house has a wonderful flow between the spaces. There are many living spaces to enjoy, some with the whole group and others for a quiet read
- The Lostwithiel Manor Estate offers an endless list of activities and features. You can enjoy the deer park, the lake, the stunning landscaped gardens, the parkland, the trails, the woodland and searching for hidden monuments

What you should know...

- The estate grounds, games room and tennis court are shared with guests staying at the manor house and the other cottages. However, Lostwithiel Stewardry enjoys much privacy and there are acres of grounds to share!
- Larger parties can also rent Lostwithiel Dairy House (<https://www.oliverstravels.com/britain-ireland/cornwall/lostwithiel-dairy-house/>), Lostwithiel House (<https://www.oliverstravels.com/britain-ireland/cornwall/lostwithiel-house/>), Lostwithiel Stable House (<https://www.oliverstravels.com/britain-ireland/cornwall/lostwithiel-stable-house/>) or Lostwithiel Manor (<https://www.oliverstravels.com/britain-ireland/cornwall/lostwithiel-manor/>) located on the same estate (subject to availability) - please follow links for more information.

Terms & Conditions

- **Security deposit:** Credit card details are required by the owner 2 weeks prior to departure for pre-authorisation.
- **Arrival time:** 4.00 p.m.
- **Departure time:** 10.00 a.m.
- **Energy costs included?:** Yes.
- **Linen & towels included?:** Yes.
- **Pets welcome?:** A maximum of 2 well-behaved dogs are allowed on request at time of booking, for an additional charge of £22 per dog, per stay. Please note that the dogs must stay downstairs. Dog bowls, biscuits and poo bags are provided.
- **Other Ts and Cs:** A travel cot and highchair are available on request.
- **Changeover day:** Friday or Monday. all other changeover days on request.
- **End of stay cleaning available?:** Standard changeover clean included in the price. Guests are required to leave the accommodation clean, tidy and in the same condition as on their arrival. Any extra cleaning, laundry, maintenance and/or rubbish disposal required will be charged against the security deposit.
- **Smoking Allowed?:** Outside only.
- **Minimum stay:** Please note that there is a 3-night minimum stay, this may be increased to 7-nights across peak dates
- **Internet access?:** Wi-Fi internet access included.