

Pier House

Region: The South East **Sleeps:** 12

Overview

Pier House holds a fabulous location within the popular South Coast resort of Southsea, within easy walking distance of the beach and a variety of helpful amenities, including shops and restaurants. The vibrant city of Portsmouth with its excellent shopping at Gunwharf Quays and range of historical attractions is less than a 10-minute drive away!

The home, under the same family ownership as Shore House (<https://www.oliverstravels.com/britain-ireland/hampshire/shore-house/>), has been lovingly modernised to the same high standards, boasting contemporary interiors and beautiful furnishings throughout. Pier House can comfortably accommodate up to twelve adults and two additional children across its six beautifully-appointed bedrooms.

The house makes an excellent base for a family get-together or a reunion of friends with plenty of entertaining space, including a living room, dining room and a kitchen, fully-equipped with all the tools you could possibly need! The adults are bound to appreciate the games room which comes complete with its very own uber-cool juke box! Meanwhile, the children are bound to enjoy fun movie nights in the cinema room. Upstairs, Pier House boasts six king-size double bedrooms each of which boasting en-suite facilities, one of which can be set up with twin single beds on request, ideal for siblings or friends to share.

Outside, after-action packed days spent exploring the surrounding area, spend relaxing Summer evenings enjoying a refreshing drink outside on the terrace.

Facilities



Ideal for Xmas/NY • Boat Trips • Walk to Village • Recommended • Ideal for Kids • Pets on Request • Ideal for Teens • Walk to Beach • Cots (Cribs) • Beach Nearby • All Bedrooms En-Suite • Modern • Parking Space • Walk to Restaurant • Wi-Fi/Internet • BBQ • Easy By Train • Coffee Machine • Outstanding Landscapes • Hairdryer • Outdoor Pursuit & Activities • Tourist Towns & Villages • Pool/Snooker • Games Room • Indoor Games • Hot Tub • Dishwasher • Microwave • Smart TV • Home Cinema • Heating • Kid-friendly excursions • Water excursions/Boat trips • Board games • Children's books • Xbox/Playstation/Wii • Ideal for Babies & Toddlers • High Chair(s)

Interior & Grounds

Lower Ground Floor

- Cinema room
- Cloakroom

Ground Floor

- Living room
- Games room with pool table, juke box and terrace access

Ground Floor (split-level so up 3 stairs)

- Fully-equipped kitchen with dining facilities

First Floor

- Bedroom with king-size bed and en-suite shower room
- Bedroom with king-size bed and en-suite shower room (*can be set up with twin beds on request*)

First Floor (split-level so up 6 stairs)

- Bedroom with king-size bed and en-suite bathroom with bath
- Bedroom with king-size bed and in-room bath tub

Second Floor

- Bedroom with king-size bed and en-suite bathroom (*can be set up with twin single beds on request*)
- Bedroom with king-size bed and en-suite shower room

Exterior Grounds

- Hot Tub to seat 8 people (*under the cover of a gazebo*)
- Terrace
- Dining facilities
- Barbecue

Additional Facilities

- Wi-Fi
- Smart TVs
- Jukebox
- Travel cot & highchair available on request
- Washing machine & dryer
- Iron & board
- Parking for 3 cars

** On request, two additional children's beds can be added into two of the bedrooms. Therefore the maximum total capacity is 12 adults and 2 children.*

** Please note that there are a number of steps and split-level floors throughout the home.*



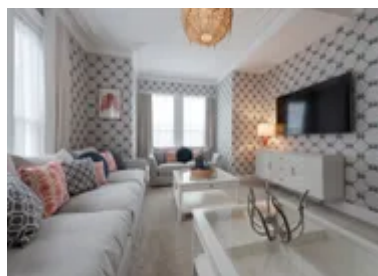
Location & Local Information

Pier House holds a wonderful location within the popular seaside resort of Southsea, less than a 5-minute walk from the beach and a 10-minute walk to the popular Southsea Green and Canoe Lake which comes complete with pedal boats to hire, a model village and a large children's playground. The Bluereef Aquarium is less than a 5-minute car journey away and for those travelling with children, is well worth a visit. From Southsea Hoverport, just a 5-minute drive from the house, you can catch a hovercraft which reaches Ryde on the Isle of Wight in just 10-minutes!

Portsmouth itself and the hugely popular Gunwharf Quays which boasts a variety of designer stores at outlet prices and a selection of family-friendly restaurants is less than a 10-minute car journey from the house. For those with a strong head for heights, also at Gunwharf is Portsmouth's Spinnaker Tower, a 170m-tall observation tower complete with a glass floor, this is a must-visit for the breathtaking views across the Solent which can be enjoyed from the top! For those with an interest in history, the Historic Dockyard which is home to HMS Victory and HMS Warrior 1860 is also just 10-minutes away, while The D-Day Story Museum is less than a 5-minute car journey away. Southsea Castle is just a 10-minute walk from Pier House and offers free entry between March and October, here visitors can enjoy the panoramic views from the top of the Keep across the Solent and out to the Isle of Wight.

In the surrounding area, the Cathedral City of Chichester is just a 30-minute drive away, with its beautiful Cathedral and cobbled streets lined with independent shops, restaurants and galleries, it is well worth a visit. The city of Winchester is just 40-minutes from Pier House, home to one of Britain's greatest Cathedrals and the popular Marwell Zoo, it makes a fantastic day out for the whole family.

Local Amenities



Nearest Town/City	Portsmouth (1km)
Nearest Village	Southsea (100m)
Nearest Restaurant	The Garden Southsea (In walking distance)
Nearest Bar/Pub	The Florence Arms Gastro Pub (In walking distance)
Nearest Supermarket	Waitrose, Southsea (800m)
Nearest Beach	Southsea (200m)

What we love

- Spend evenings listening to your favourite tunes on the impressive jukebox while enjoying a game of pool!
- Brilliant location in walking distance of the beach, parks and a variety of shops, restaurants and attractions!
- After action-packed days spent enjoying the hustle & bustle of Gunwharf Quays, sit back and relax in the cinema room
- Each of the bedrooms boast en-suite facilities - ideal for two or three families holidaying together!

What you should know...

- The accommodation is set over multiple levels and is therefore perhaps less suited to those who struggle with mobility
- Please note that the property offers parking for up to three cars: two vehicles can park on the driveway, with space for a third car to park across the driveway on the road, which may block the other vehicles in.
- Please be aware that this house is situated in a residential area, though is very close by several local amenities

Terms & Conditions

- **Security deposit:** £1000 charged to the client's credit card as a pre-authorisation at least 2 weeks prior to arrival and refunded two weeks after departure, subject to a full inspection
- **Arrival time:** 4pm
- **Departure time:** 10am
- **Energy costs included?:** Yes, included in the rental price
- **Linen & towels included?:** Yes, included in the rental price
- **Pets welcome?:** A maximum of 1 well-behaved dog is allowed on request for an additional charge of £200 per stay. Please request at the time of booking.
- **Other Ts and Cs:** The house is situated in a residential area so please be respectful of neighbours when using the outdoor space - NO outside parties, fireworks or loud music. Stag do's are NOT permitted. The lead booker should be 30 years of age.
- **Changeover day:** Friday or Monday. For Christmas or New Year bookings, the check-in day might be flexible on request. Please enquire.
- **End of stay cleaning:** Standard changeover clean included in the price. Guests are required to leave the accommodation clean, tidy and in the same condition as on their arrival. Any extra cleaning, laundry, maintenance and/or rubbish disposal required will be charged against the security deposit.
- **Smoking Allowed?:** No smoking
- **Minimum stay:** Please note that there is a 2-night minimum stay, this may be increased to 5-nights across peak dates
- **Internet access?:** Yes, Wi-Fi is included in the rental price