

# Chevaliers Coach House

**Region:** Heart Of England **Sleeps:** 6

## Overview

Chevaliers Coach House makes the perfect base for a family who are wanting to explore beautiful Shropshire, with its historical attractions, scenic walks and gastro hotspots. Set in a secluded hamlet, close to Bridgnorth and Much Wenlock, this newly converted barn makes a fantastic home for those seeking a relaxing rural escape.

The 19th Century Coach House has been recently refurbished and today boasts updated interiors and furnishings however the beautiful, original high oak beams have enabled the barn to retain its unique charm and character. On the ground floor is the spacious living accommodation which comprises of a large sitting room as well as a bespoke fitted kitchen with all the necessary amenities a budding chef could possibly need as well as a formal dining table. This beautiful kitch boasts large french windows tat lead on to a south facing terrace. There are two ground floor bedrooms, one super-king master bedroom with an ensuite bathroom and the other king size and with an ensuite shower room. Upstairs in the mezzanine level, up a spiral staircase, you will fine a twin room in the mezzanine suitable for young families.

Outside, the south-facing private garden terrace makes a tranquil spot from which to enjoy your morning cup of coffee or a sundowner at the end of an exciting day!

Just a minutes' walk away from the Coach House, is Chevaliers Gatehouse, this is the perfect option for those in smaller groups. Alternatively, it is possible to rent Chevaliers Estate, a combination of the Coach House, Gatehouse and Moat House in order to accommodate parties of up to eight or twelve guests (subject to availability).

*\*Please note that while Chevaliers Coach is listed as sleeping up to 6 adults, we can also accommodate an additional child or teenager on a single bed in one of the ground floor bedrooms.*

## Facilities

Ideal for Kids • Walking/Hiking Paths • Pets on Request • Special Offer • Has Discount • Cots (Cribs) • Great Value • Quirky (Unique) • Ideal for Teens • Instagrammable • Ground Floor Bed & Bath • Cottage • Heritage Collection • Wi-Fi/Internet • Country Estate • Rural Location • Outstanding Landscapes • Outdoor Pursuit & Activities • Tourist Towns & Villages • Satellite TV • Heating • Caretaker/Owner on Site • Ideal for Babies & Toddlers • High Chair(s)



# Interior & Grounds

## Ground Floor

- Sitting room with high ceilings
- Fully-equipped kitchen with dining facilities
- Bedroom with double bed and single bed
- Bedroom with double bed
- Two bathrooms

## First Floor

- Bedroom with twin single beds

## Exterior Grounds

- Private south facing patio
- Barbecue available on request
- Access to the historic gardens of Upton Cressett

## Additional Facilities

- Wi-Fi
- TV
- Washing machine & tumble dryer
- Travel cot & highchair available on request (please bring your own cot linen)
- Parking for 2 cars

*\*Please note that while Chevaliers Coach is listed as sleeping up to 6 adults, we can also accommodate an additional child or teenager on a single bed in one of the ground floor bedrooms.*



# Location & Local Information

Chevaliers Coach House is situated within a secluded hamlet deep in the Shropshire countryside, but lies within four and a half miles of historic Bridgnorth and four miles of the pretty market town of Much Wenlock. Next to the Hall is the historic Norman church of St Michael with its 12th century wall paintings and famous 12th century font.

Chevaliers Coach House remains a haven of peace and rural beauty today – an ideal place to explore Shropshire and the Heart of England, from the gastronomic centre of Ludlow to the Ironbridge Gorge Museum, the Shropshire hills and many other historic houses and gardens, including the Dower House Gardens in nearby Morville of Dr Katherine Swift (author of the bestselling book *The Morville Hours*) and the world famous nursery gardens of David Austin Roses.

Bridgnorth, four miles away, is an attractive market town famous for its funicular railway and the many flights of steps which connect the High and Low Towns. Regular steam trains also run from here along the Severn Valley Railway. The town has many charming pubs and bistro restaurants, as well as high street shops, a supermarket and a cinema.

Much Wenlock, five miles away, has been voted the second most beautiful town in England. You can stroll around the ruins and grounds of the ancient Wenlock and Buildwas Abbeys (Wenlock Abbey was one of the most important in the 15th century), go antique shopping, visit the local Olympian museum, browse for second hand books (Wenlock Books won the coveted Independent Bookseller of the Year award in 2006) or go shopping at the artisan shops and galleries or the traditional butcher, Ryan's, that has won a national award for Best Butcher in Britain.

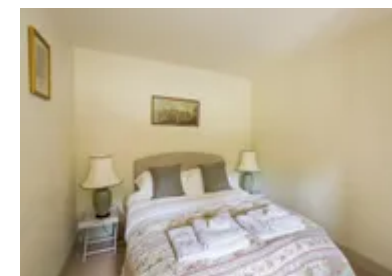
Half an hour's drive away to the south-west is historic Ludlow, one of the gastro capitals of England with award winning Michelin restaurants, secluded gastro-pubs, historic market square and famous castle ruins where the two 'Princes of the Tower' were brought up in the late 15th century. To the north-west, also half an hour away, is historic Shrewsbury, birthplace of Charles Darwin, with its old cathedral, market squares, theatre and riverside restaurants.

Chevaliers Coach House is conveniently located for access to the M5, M6, M54 and M40 motorways. The nearest station is fifteen miles away with frequent inter-city trains from London, Manchester and Glasgow and services to Wales and the West Country. The nearest airport is Birmingham International Airport, approximately 40 miles away.

## Local Heritage Attractions

Shropshire has a wide selection of historic houses, castles and gardens to visit. Many are normally open all year but please check the details before visiting to avoid disappointment. We can recommend:

- Dudmaston Hall, near Bridgnorth
- Daniel's Mill, Bridgnorth
- Wenlock Abbey, Much Wenlock
- Buildwas Abbey, near Much Wenlock
- Ludlow Castle
- Stokesay Castle, near Ludlow



- Boscobel House and White Ladies Priory (where Charles II famously hid up the Royal Oak tree in 1651)
- Hampton Court and Gardens, near Leominster
- Wightwick Manor, near Wolverhampton

### ***Family Day's Out***

- Severn Valley Railway  
www.svr.co.uk

One of the country's most charming vintage steam train lines with a selection of trains (including a refurbished 1930s First Class Dining carriage) that runs along the River Severn between Kidderminster and Bridgnorth. This year the line celebrates its 50th anniversary. Wonderful old-fashioned station pub as well called The Railwayman's Arms.

- Ironbridge Gorge Museums  
www.ironbridge.org.uk

- Acton Scott Historic Working Farm  
Church Stretton, Shropshire, SY6 5QN  
www.actonscottmuseum.com

A super family day out at a Victorian working farm. Lots of animals to feed and hold for young children. Enjoy demonstrations all in the beautiful setting of the Shropshire Hills.

- West Midlands Safari Park  
Spring Grove Rd, Bewdley, Kidderminster DY12 1LF  
10am - 3pm weekdays and 10am - 4pm weekends  
Booking required.

### ***Gardens***

- The Dower House Garden at Morville Hall  
Telephone: 01746 714407.

The Dower House Gardens occupy a 1.5 acre site in a beautiful setting within the grounds of Morville Hall, near Bridgnorth in Shropshire.

- David Austin  
Bowling Green Ln, Albrighton, Wolverhampton WV7 3HB  
Telephone: 01902 376334  
Breeder of roses. 900 varieties. His show garden is a must see with a lovely tearoom.

- Wollerton Old Hall Garden  
Wollerton, Market Drayton TF9 3NA, England  
Telephone: 01630 685760

The garden has been designed and developed by Lesley and John Jenkins since 1984, it covers 4 acres, is intensely cultivated and depending upon plant interest, visits can take between 2 and 4 hours.

## **Local Amenities**

Nearest City	<b>Birmingham (53.9km)</b>
Nearest Town	<b>Bridgnorth (7.6km)</b>

Nearest Restaurant	<b>The Woodberry Inn, Bridgnorth (7.5km)</b>
Nearest Supermarket	<b>Budgens, Bridgnorth (7.4km)</b>
Nearest Golf	<b>Bridgnorth Golf Club (9.5km)</b>

## What we love

- The Coach House dates back to the 19th century and boasts endless charm and character
- Two of the bedrooms are situated on the ground floor which makes them ideal for those who struggle with mobility
- For those in larger groups it is possible to rent Chevaliers Coach House or a combination of the Gatehouse (<https://www.oliverstravels.com/britain-ireland/midlands/chevaliers-gatehouse/>), Moat House (<https://www.oliverstravels.com/britain-ireland/midlands/chevaliers-moat-house/>) and Cider House (<https://www.oliverstravels.com/britain-ireland/shropshire/chevaliers-cider-house/>) in order to sleep additional guests. For large groups of up to 20 guests, please see Chavaliers Estate (<https://www.oliverstravels.com/britain-ireland/shropshire/chevaliers-estate/>).

## What you should know...

- The twin bedroom is accessed via a spiral staircase and is better suited to older children
- The owners offer their in house catering and cannot accept bookings with local catering companies
- Please note that the property owners live on-site, and will be very happy to help.

# Terms & Conditions

- **Security deposit:** £100 charged to client's credit card by Oliver's Travels as a pre-authorisation at least 2 weeks prior to arrival and refunded two weeks after departure, subject to full inspection.
- **Arrival time:** 4pm
- **Departure time:** 10am
- **Energy costs included?:** Yes, included in the rental price
- **Linen & towels included?:** Yes, included in the rental price
- **Pets welcome?:** A maximum of 2 well-behaved dogs allowed on request at the time of booking. Please note that there will be an additional charge of £30 per dog, per stay.
- **Other Ts and Cs:** Please note that the property owners live on-site, and will be very happy to help.
- **Changeover day:** Flexible
- **End of stay cleaning:** Standard changeover clean included in the price. Guests are required to leave the accommodation clean, tidy and in the same condition as on their arrival. Any extra cleaning, laundry, maintenance and/or rubbish disposal required will be charged against the security deposit.
- **Smoking Allowed?:** No smoking
- **Minimum stay:** Please note that there is a 3-night minimum stay, this may be increased to 5-nights across peak periods
- **Internet access?:** Yes, Wi-Fi is included in the rental price

Please note that the owners offer their own catering and service staff, that can be enquired at the moment of booking. Bookings with local catering companies are not accepted.