

Shaftesbury House

Region: The South West **Sleeps:** 18

Overview

Nestled in the idyllic village of Wimborne St Giles, Shaftesbury House offers a charming countryside escape, just thirty minutes from the historic market town of Shaftesbury and the vibrant seaside resort of Bournemouth. This enchanting 17th-century home exudes romance and character, making it the perfect setting for unforgettable gatherings and quiet retreats alike.

Lovingly restored, the house has been modernised with care, preserving its rich history while seamlessly incorporating luxurious modern amenities. From exposed beams to antique furnishings, every corner tells a story. With equestrian-themed decor paying homage to its origins as a 17th-century stable, the home combines authenticity with five-star elegance. Soaking tubs, king-size beds, and thoughtful touches create a haven of relaxation. For those seeking indulgence, the team can provide breakfast, curated platters, or a fully stocked fridge.

The house comfortably accommodates up to eighteen guests across eight beautifully-appointed bedrooms, each with its own en-suite facilities. Thoughtfully designed, the ground floor offers two bedrooms, while the remaining six upstairs feature unique touches that blend historic charm with contemporary luxury.

Social spaces abound, from the spacious lounge adorned with plush velvet sofas to the rustic dining room, which can host up to thirty guests. Whether you're gathered around the billiard table in the first-floor lounge, relaxing by the fire, or indulging in a feast prepared by professional caterers in the fully-equipped kitchen, every moment at Shaftesbury House is a celebration of togetherness.

Outside, guests can wander through the expansive parkland of the St Giles Estate, enjoying the beauty of the surrounding countryside. The house is ideally located for exploring the New Forest, Dorset's picturesque coastline, and the charming nearby villages.

Shaftesbury House is more than just a place to stay; it's an experience. Whether you're sharing a romantic getaway, hosting a milestone celebration, or simply escaping to reconnect with loved ones, Shaftesbury House offers a cosy, character-filled retreat with a touch of magic in every detail.

Facilities

Ideal for Xmas/NY • Historical Sites • Walking/Hiking Paths • Golf Nearby • Recommended • Ideal for Kids • Special Offer • Quirky (Unique) • Ideal for Teens • Maid Service Available • Manor • Cots (Cribs) • Pets on Request • Has Offer • All Bedrooms En-Suite • Instagrammable • Ground Floor Bed & Bath • Parking Space • Heritage Collection • Country Estate • Wi-



Fi/Internet • Rural Location • Outstanding Landscapes • Coffee Machine •
Outdoor Pursuit & Activities • Hairdryer • Tourist Towns & Villages • Indoor
Games • Smart TV • Heating • Pre-Stocked Fridge Available • Catering
Available • High Chair(s)

Interior & Grounds

Ground Floor

- Entrance hall
- Fully-equipped professional-style kitchen
- Dining hall
- Cloakroom
- "Skewbald Suite" with king-size bed and en-suite bathroom
- "Roan Suite" with king-size bed, additional double bed on mezzanine level, in-room bath tub and en-suite shower room

First Floor

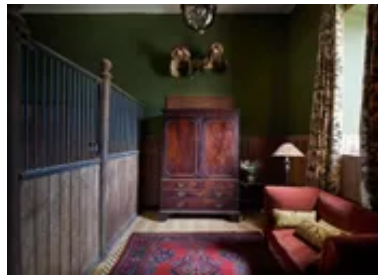
- Living room with library, billards table and bar
- Cloakroom
- "Chesnut Suite" with king-size bed, in-room bath and shower and en-suite cloakroom
- "Dun Suite" with king-size bed and mezzanine en-suite bathroom
- "Buckskin Suite" with king-size bed and mezzanine en-suite bathroom
- "Dapple Grey Suite" with king-size bed and mezzanine en-suite bathroom
- "Palomino Suite" with king-size bed and mezzanine en-suite bathroom
- "Bay Suite" with king-size bed and mezzanine en-suite bathroom

Exterior Grounds

- Access to Estate's parkland

Additional Facilities

- Wi-Fi
- Smart TVs
- Bluetooth speaker
- Hairdryers
- Parking



Location & Local Information

Shaftesbury House is situated in the Dorset village of Wimborne St Giles, a selection of helpful amenities can be found in the neighbouring village of Cranborne, including, a farm shop and a post office, just a 5-minute drive away. A wider variety of amenities can be found in the towns of Verwood, Ringwood or Fordingbridge, all less than 20-minutes away while the hilltop town of Shaftesbury itself is a 30-minute drive.

There is plenty for the whole family to see, do and explore in the surrounding area. The seaside resort of Bournemouth is just a 30-minute drive away, here there are seven miles of sandy beaches and plenty of child-friendly attractions including indoor adventure golf, an Oceanarium and the RockReef activity centre. Just a little further along the coast, is the iconic Lulworth Cove and Durdle Door, just under an hour away they truly are a must visit while staying in Dorset.

For those looking to explore the great outdoors, the New Forest, home to some of the South of England's most picturesque countryside, is less than 40-minutes from Shaftesbury House. The lavish mansion of Kingston Lacy, owned by the National Trust, is just a 20-minute drive, visitors will enjoy exploring the beautiful gardens on a sunny day. A visit to Highcliffe Castle also makes for a wonderful day out with its fabulous gardens and tea room, also just 40-minutes away.

Local Amenities

Nearest Beach	Bournemouth (31km)
Nearest Golf	Crane Valley Golf Club (5.5 km)
Nearest Restaurant	Al Trullo, Verwood (7.1km)
Nearest Supermarket	Morrison's, Verwood (7.4km)



Nearest Town	Verwood (7km)
Nearest Village	Wimborne St Giles (500m)

What we love

- The home features a completely unique, equestrian-themed interior, ideal for those looking for something a little out of the ordinary.
- The eight bedrooms each boast en-suite facilities, making this an excellent choice for a group of couples holidaying together.
- Up to four well-behaved doggies are welcome to come along too! (Please see T&C's tab for details!)

What you should know...

- Two of the bedrooms are situated on the ground floor and while this may be ideal for those who struggle with mobility, it may not suit all groups.
- One of the bedrooms is set up as a family suite and is therefore better suited to those travelling with younger children.
- Guests staying in our accommodation are politely asked to respect the family's privacy by keeping away from the main house, formal gardens, lake, woodlands and the immediate surrounding area.

Terms & Conditions

- **Security deposit:** £500 to be paid prior to arrival and to be refunded in full subject to a damage inspection on departure
- **Arrival time:** 4pm
- **Departure time:** 10am
- **Energy costs included?:** Yes, included in the rental price
- **Linen & towels included?:** Yes, included in the rental price
- **Pets welcome?:** A maximum of 4 well-behaved dogs are allowed on a request basis at time of booking. Please note that there is an additional charge of £25 per dog, per night (maximum £50 per dog per stay). Dogs are to stay downstairs. Please clean up after your dogs and ensure they are kept on a lead when outdoors
- **Other Ts and Cs:** There is an Honesty Bar available in the living area. If you would like to make use of this, then please expect to pay a fee of £10 per person on arrival. The balance will be settled on check-out.
- **Changeover day:** Friday or Monday
- **End of stay cleaning available?:** Yes, included in the rental price
- **Smoking Allowed?:** Smoking & Vaping are not permitted.
- **Minimum stay:** Please note that there is a 2-night minimum stay, this may be increased across peak dates
- **Internet access?:** Yes, Wi-Fi is included in the rental price