

Folly Lodge East

Region: The South West **Sleeps:** 2

Overview

Folly Lodge East holds a wonderful location, situated in a countryside position in the village of Wimborne St Giles, just thirty minutes from the market town of Shaftesbury and the popular seaside resort of Bournemouth.

The characterful Gate Lodge makes a completely unique bolthole for two, the ideal setting for a romantic escape in the very heart of wonderful Dorset. Nestled in a countryside position, it makes for a relaxing and tranquil break. Folly Lodge East can comfortably accommodate up to two, subject to availability it may be possible to book Folly Lodge West simultaneously, ideal for two couples holidaying together who wish to retain an element of privacy. The Lodge features a cosy living area with an open fire, a fully-equipped kitchen, double bedroom and bathroom.

The home is located in a fantastic position for couples wishing to explore the wonderful surrounding area, with the New Forest and the Jurassic coastline within easy reaching distance.

Facilities

Wi-Fi/Internet • Golf Nearby • Ground Floor Bed & Bath • Hairdryer • Not for little ones • Walking/Hiking Paths • Special Offer • Has Offer • Not For Little Ones • Quirky (Unique) • Rural Location • Cottage • Heritage Collection • Country Estate • Smart TV • Working Fireplace/Woodburner • Heating • Parking Space • Outstanding Landscapes • Outdoor Pursuit & Activities • Tourist Towns & Villages



Interior & Grounds

Ground Floor

- Living room with double sofa bed (suitable for up to 2 children only)
- Fully-equipped kitchen with dining facilities
- Bedroom with double bed
- Bathroom

Exterior Grounds

- Terrace
- Access to the Estate's Parklands

Additional Facilities

- Wi-Fi
- Smart TV
- Egyptian bedding
- Parking



Location & Local Information

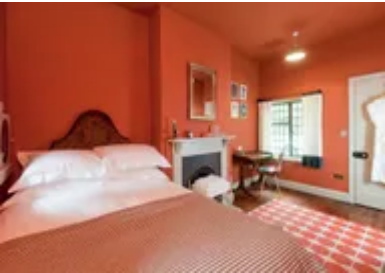
Shaftesbury House is situated in the Dorset village of Wimborne St Giles, a selection of helpful amenities can be found in the neighbouring village of Cranborne, including, a farm shop, a post office and a restaurant, all just a 5-minute drive away. A wider variety of amenities can be found in the market town of Ringwood which is just 20-minutes away, the hilltop town of Shaftesbury itself is a 30-minute drive.

There is plenty for the whole family to see, do and explore in the surrounding area. The seaside resort of Bournemouth is just a 30-minute drive away, here there are seven miles of sandy beaches and plenty of child-friendly attractions including indoor adventure golf, an Oceanarium and the RockReef activity centre. Just a little further along the coast, is the iconic Lulworth Cove and Durdle Door, just under an hour away they truly are a must visit while staying in Dorset.

For those looking to explore the great outdoors, the New Forest, home to some of the South of England’s most picturesque countryside, is less than 40-minutes from Shaftesbury House. The lavish mansion of Kingston Lacy, owned by the National Trust, is just a 20-minute drive, visitors will enjoy exploring the beautiful gardens on a sunny day. A visit to Highcliffe Castle also makes for a wonderful day out with its fabulous gardens and tea room, also just 40-minutes away.

Local Amenities

Nearest Town	Verwood (7km)
Nearest Village	Wimborne St Giles (500m)
Nearest Supermarket	Morrison's, Verwood (7.4km)
Nearest Restaurant	Al Trullo, Verwood (7.1km)



Nearest Golf	Crane Valley Golf Club (5.3km)
Nearest Beach	Bournemouth (31km)

What we love

- Perfect, cosy bolthole for two - ideal for a romantic escape away from any hustle and bustle!
- Fabulous location within Dorset, ideally situated for those looking to explore both the countryside and coastline
- After action-packed days spent exploring the area, snuggle on the sofa by the open fire - heaven!

What you should know...

- The accommodation is all set on the ground floor and while this may suit those who struggle with mobility, it may not suit everyone
- Please note that there is a sofa-bed which can accommodate up to 2 children. Please enquire at time of booking.
- Guests staying in our accommodation are politely asked to respect the family's privacy by keeping away from the main house, formal gardens, lake, woodlands and the immediate surrounding area

Terms & Conditions

- **Security deposit:** £125 to be paid on arrival and to be refunded in full subject to a damage inspection on departure
- **Arrival time:** 4pm
- **Departure time:** 10am
- **Energy costs included?:** Yes, included in the rental price
- **Linen & towels included?:** Yes, included in the rental price
- **Pets welcome?:** Pets welcome at an additional rate of £25 per night (up to £50). Please enquire at time of booking.
- **Changeover day:** Friday or Monday
- **End of stay cleaning available?:** Yes, included in the rental price
- **Smoking Allowed?:** No smoking
- **Minimum stay:** Please note that there is a 2-night minimum stay, this may be increased across peak dates
- **Internet access?:** Yes, Wi-Fi is included in the rental price