

# Lady Cottage

**Region:** The South West   **Sleeps:** 4

---

## Overview

Lady Cottage holds a wonderful location, situated in a countryside position in the village of Wimborne St Giles, just thirty minutes from the market town of Shaftesbury and the popular seaside resort of Bournemouth.

The characterful cottage makes a completely unique bolthole for four, the ideal setting for a rural escape in the very heart of wonderful Dorset. Nestled in a countryside position, it makes for a relaxing and tranquil break. Lady Cottage can comfortably accommodate up to four, subject to availability it may be possible to book the adjoined Lady Cottage simultaneously, ideal for two families holidaying together who wish to retain an element of privacy. The Lodge features a cosy living area with an open fire, a fully-equipped kitchen and two double en-suite bedrooms.

The cottage is located in a fantastic position for couples wishing to explore the wonderful surrounding area, with the New Forest and the Jurassic coastline within easy reaching distance.

## Facilities

Not For Little Ones • Quirky (Unique) • Wi-Fi/Internet • Romantic • Rural Location • Cottage • Heritage Collection • Country Estate • AGA • Hairdryer • All Bedrooms En-Suite • Smart TV • Heating • Not for little ones • Parking Space • Walking/Hiking Paths • Outstanding Landscapes • Outdoor Pursuit & Activities • Tourist Towns & Villages



# Interior & Grounds

## Ground Floor

- Living area
- Fully-equipped kitchen & dining area

## First Floor

- Bedroom with king-size bed and en-suite bathroom
- Bedroom with king-size bed and in-room bath and shower

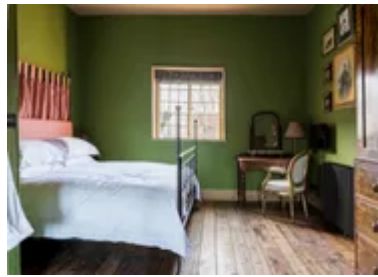
## Exterior Grounds

- Access to the Estate's Parklands

## Additional Facilities

- Wi-Fi
- Smart TV
- Hairdryer
- Parking in the walled car park

*\* Please note that Lady Cottage is a maisonette, adjoining Lord Cottage.*



# Location & Local Information

Lady Cottage is situated in the Dorset village of Wimborne St Giles, a selection of helpful amenities can be found in the neighbouring village of Cranborne, including, a farm shop, a post office and a restaurant, all just a 5-minute drive away. A wider variety of amenities can be found in the market town of Ringwood which is just 20-minutes away, the hilltop town of Shaftesbury itself is a 30-minute drive.

There is plenty for the whole family to see, do and explore in the surrounding area. The seaside resort of Bournemouth is just a 30-minute drive away, here there are seven miles of sandy beaches and plenty of child-friendly attractions including indoor adventure golf, an Oceanarium and the RockReef activity centre. Just a little further along the coast, is the iconic Lulworth Cove and Durdle Door, just under an hour away they truly are a must visit while staying in Dorset.

For those looking to explore the great outdoors, the New Forest, home to some of the South of England’s most picturesque countryside, is less than 40-minutes from Lady Cottage. The lavish mansion of Kingston Lacy, owned by the National Trust, is just a 20-minute drive, visitors will enjoy exploring the beautiful gardens on a sunny day. A visit to Highcliffe Castle also makes for a wonderful day out with its fabulous gardens and tea room, also just 40-minutes away.

## Local Amenities

Nearest Town	Verwood (7km)
Nearest Village	Wimborne St Giles (500m)
Nearest Supermarket	Morrison's, Verwood (7.4km)
Nearest Restaurant	Al Trullo, Verwood (7.1km)



Nearest Golf	<b>Crane Valley Golf Club (5.3km)</b>
Nearest Beach	<b>Bournemouth (31km)</b>

## What we love

- With its unique Equestrian theme, Lady Cottage makes an excellent choice for those looking for something out of the ordinary
- Excellent position within Dorset, in easy reaching distance of Shaftesbury, the New Forest and the coastal resort of Bournemouth
- Complete with Egyptian cotton bedding, freestanding copper baths and dressing gowns, Lady Cottage is the ultimate destination for some well-deserved R&R!

## What you should know...

- The home is a maisonette which adjoins Lord Cottage (<https://www.oliverstravels.com/britain-ireland/dorset/lord-cottage/>) this makes them ideal for two families holidaying together who wish to still enjoy an element of privacy
- Guests staying in our accommodation are politely asked to respect the family's privacy by keeping away from the main house, formal gardens, lake, woodlands and the immediate surrounding area

# Terms & Conditions

- **Security deposit:** £125 to be paid on arrival and to be refunded in full subject to a damage inspection on departure
- **Arrival time:** 4pm
- **Departure time:** 10am
- **Energy costs included?:** Yes, included in the rental price
- **Linen & towels included?:** Yes, included in the rental price
- **Pets welcome?:** Pets welcome at an additional rate of £25 per night (up to £50). Please enquire at time of booking.
- **Changeover day:** Friday or Monday
- **End of stay cleaning available?:** Yes, included in the rental price
- **Smoking Allowed?:** No smoking
- **Minimum stay:** Please note that there is a 2-night minimum stay, this may be increased across peak dates
- **Internet access?:** Yes, Wi-Fi is included in the rental price