

Lord Cottage

Region: The South West Sleeps: 4

Overview

Lord Cottage holds a magnificent location, situated in a countryside position in the village of Wimborne St Giles, just thirty minutes from the market town of Shaftesbury and the popular seaside resort of Bournemouth.

The characterful cottage makes a completely unique bolthole for four, the ideal setting for a rural escape in the very heart of wonderful Dorset. Nestled in a countryside position, it makes for a relaxing and tranquil break. Lord Cottage can comfortably accommodate up to four, subject to availability it may be possible to book the adjoining Lady Cottage simultaneously, ideal for two families holidaying together who wish to retain an element of privacy. The Lodge features a cosy living area with an open fire, a fully-equipped kitchen and two double bedrooms both complete with en-suite bathrooms.

The cottage is located in a fantastic position for couples wishing to explore the wonderful surrounding area, with the New Forest and the Jurassic coastline within easy reaching distance.

Facilities

Not for little ones • Walking/Hiking Paths • Romantic • Special Offer • Has Offer • Not For Little Ones • Quirky (Unique) • Instagrammable • Cottage • Heritage Collection • Parking Space • Wi-Fi/Internet • Country Estate • Rural Location • Outstanding Landscapes • Hairdryer • Outdoor Pursuit & Activities • Tourist Towns & Villages • Microwave • Smart TV • Heating



Interior & Grounds

Ground Floor

- Living area
- Fully-equipped kitchen with dining facilities
- Bedroom with king-size bed and en-suite bathroom

First Floor

- Bedroom with king-size bed and in-room shower and bath tub

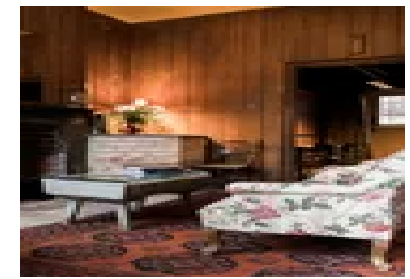
Exterior Grounds

- Access to the Estate's Parklands

Additional Facilities

- Wi-Fi
- Smart TV
- Egyptian cotton bedding
- Hairdryer
- Parking within the walled car park

** Please note that Lord Cottage is a maisonette, adjoining Lady Cottage.*



Location & Local Information

Lord Cottage is situated in the Dorset village of Wimborne St Giles, a selection of helpful amenities can be found in the neighbouring village of Cranborne, including, a farm shop, a post office and a restaurant, all just a 5-minute drive away. A wider variety of amenities can be found in the market town of Ringwood which is just 20-minutes away, the hilltop town of Shaftesbury itself is a 30-minute drive.

There is plenty for the whole family to see, do and explore in the surrounding area. The seaside resort of Bournemouth is just a 30-minute drive away, here there are seven miles of sandy beaches and plenty of child-friendly attractions including indoor adventure golf, an Oceanarium and the RockReef activity centre. Just a little further along the coast, is the iconic Lulworth Cove and Durdle Door, just under an hour away they truly are a must visit while staying in Dorset.

For those looking to explore the great outdoors, the New Forest, home to some of the South of England's most picturesque countryside, is less than 40-minutes from Lord Cottage. The lavish mansion of Kingston Lacy, owned by the National Trust, is just a 20-minute drive, visitors will enjoy exploring the beautiful gardens on a sunny day. A visit to Highcliffe Castle also makes for a wonderful day out with its fabulous gardens and tea room, also just 40-minutes away.

Local Amenities

Nearest Town	Verwood (7km)
Nearest Village	Wimborne St Giles (500m)
Nearest Supermarket	Morrison's, Verwood (7.4km)
Nearest Restaurant	Al Trullo, Verwood (7.1km)



Nearest Golf	Crane Valley Golf Club (5.3km)
--------------	---

Nearest Beach	Bournemouth (31km)
---------------	-------------------------------

What we love

- Excellent location within Dorset, ideal for those wishing to explore both the New Forest and the coast!
- Complete with Egyptian cotton bedding, freestanding copper baths and dressing gowns, Lord Cottage is the ultimate destination for some well-deserved R&R!
- Ideal for those in search of a quirky bolthole with its totally individual Equestrian theme throughout

What you should know...

- The home is a maisonette which adjoins Lady Cottage this makes them ideal for two families holidaying together who wish to still enjoy an element of privacy
- Guests staying in our accommodation are politely asked to respect the family's privacy by keeping away from the main house, formal gardens, lake, woodlands and the immediate surrounding area

Terms & Conditions

- **Security deposit:** £125 to be paid on arrival and to be refunded in full subject to a damage inspection on departure
- **Arrival time:** 4pm
- **Departure time:** 10am
- **Energy costs included?:** Yes, included in the rental price
- **Linen & towels included?:** Yes, included in the rental price
- **Pets welcome?:** Pets welcome at an additional rate of £25 per night (up to £50). Please enquire at time of booking.
- **Changeover day:** Friday or Monday
- **End of stay cleaning:** Standard changeover clean included in the price. Guests are required to leave the accommodation clean, tidy and in the same condition as on their arrival. Any extra cleaning, laundry, maintenance and/or rubbish disposal required will be charged against the security deposit.
- **Smoking Allowed?:** No smoking
- **Minimum stay:** Please note that there is a 2-night minimum stay, this may be increased across peak dates
- **Internet access?:** Yes, Wi-Fi included in the rental price