

Blakeney House

Region: East Of England Sleeps: 8

Overview

A seaside haven set just a stone's throw back from the stunning Norfolk coastline, Blakeney House is an unmissable treat for a large family or group of friends to enjoy some of the finest English scenery.

The home itself is every bit as beautiful as its surroundings, designed to blend in with and enhance its connection with the natural world around it, with double size windows and full walls of glass! First explore your sublime kitchen: the gentle colours of the sky, ranging through pastel blues to soft greys complement the Aga along the back wall, which creates an incredible traditional feel to this otherwise wonderfully modern space. Right alongside this is your superb living room, with a sofa stretching across the wall of windows, looking out over the fireplace and TV. On the other side of the hallway you'll find a second lovely dining area, with natural tones working their way into every part of the room. There's an extra TV room for cosier moments in front of a film or curled up with a book, and even a games room with a pool table and table tennis for more active entertainment! As you head up the first floor you're met with a casual living area where you can settle into a seat by the floor to ceiling windows and admire your private garden and the dunes just beyond it.

Each of these four bedrooms plays on this stunning connection to the coast and the sea, using brilliant blues and delightful floral and wildlife patterns to bring the outside in. The first bedroom is accessed via stairs leading from the kitchen, meanwhile the remaining three are on the main first-floor. The master bedroom enjoys a super-king size bed, while there's an additional double room and two more rooms with fabulous zip-n-link beds, so we can be flexible to your needs! And all four accompanying bathrooms are just as welcoming! Bright and luxurious, a



range of walk-in showers and huge bathtubs invite you for a rejuvenating cleanse.

Finally your lovely big garden provides all the space and seating you could wish for, to spend endless hours out in the sunshine. Soak up the sights and sounds of the seaside as the sea breeze rustles the leaves of the mature trees all around you. There's tons of space for the kids to run around, and plenty of sunny spots for a little sunbathing. And of course the sea is just meters away when you fancy a paddle or a swim, or simply a stroll along the sandy coast!

Facilities

Wi-Fi/Internet • Golf Nearby • Walking/Hiking Paths • Fishing • Surfing • Washing Machine • Cycling • Watersports • Villa • Cots (Cribs) • Rural Location • Quirky (Unique) • Has Discount • Games Room • Special Offer • Instagrammable • Modern • Ideal for Babies & Toddlers • Ideal for Kids • Ideal for Teens • Pets on Request • Tumble Dryer • Dishwasher • AGA • Smart TV • Working Fireplace/Woodburner • Heating • High Chair(s) • Parking Space • Outstanding Landscapes • Outdoor Pursuit & Activities • Tourist Towns & Villages

Interior & Grounds

Ground Floor

- Living area
- Snug
- Fully-equipped kitchen with dining facilities

First Floor

- Bedroom with super-king bed and en-suite bathroom
- Bedroom with double bed
- Bedroom with king-size bed and en-suite shower room
- Family shower room
- Bedroom with king-size bed and en-suite bathroom (*accessed from a separate staircase via the kitchen area*)

Exterior Grounds

- Terrace
- Dining facilities
- Lawns

Additional Facilities

- Wi-Fi
- Washing machine & dryer
- Travel cot & highchair available on request
- Parking for 4 cars



Location & Local Information

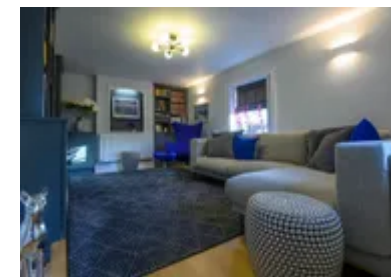
Whether you're after sun, sea and sand or quaint towns and beautiful natural landscape, Norfolk offers a little something for everyone - and Blakeney House is in one of its most spectacular corners!

Seaside treats, cosy cafes and endless miles of nature in which you can picnic, stroll and play are perfect for groups of families or friends. The vast skies stretch in every direction, over the big Broads teeming with life and the wetlands, nature reserves and so many exceptional beaches along 90 miles of coastline! And as the driest county in the UK, Norfolk is ideal for an outdoor adventure, whether on sea or land!

The Broads National Park, the Fens and Thetford Forest are just a handful of the breath-taking nature parks to visit, while Norfolk's famous coastline is bursting with wide open, empty beaches perfect for a proper bucket-and-spade holiday with the family! This is where the expanse of the skies truly bursts with life and fills you with joy. Dotted along the horizon are yachts and power-boats while nearer to shore you'll find surfers, kayakers, kite-surfers and so much more! While lining the beaches are hundreds of candy-coloured beach huts, dazzling promenades with candyfloss and fish and chips and of course, the romantic dunes with endless hidden spots for barbeques and family-fun.

And for more outdoor activities, stretching from Holme-next-the-Sea all the way to Cromer, the 45-mile long Norfolk Coastal Path through this Area of Outstanding Natural Beauty offers some of the best birdwatching in the UK, a glimpse of the seals on Blakeney Point, and the earliest evidence of humans found outside The Great Rift Valley in Africa on the Deep History Coast! The path weaves itself through tidal creeks and salt marshes, shingle, luscious fields and enormous sandy beaches – and as Norfolk is a haven for wildlife and birds, you'll have plenty to admire throughout!

Local Amenities



Nearest Town	Wells-next-the-Sea (12.4km)
Nearest Village	Blakeney (500m)
Nearest Restaurant	White Horse, Blakeney (1km)
Nearest Supermarket	Spar, Blakeney (500m)
Nearest Beach	Wells-next-the-Sea or Sheringham (14.5km)

What we love

- With coastal views from all across the first floor, and lovely large windows so you can make the most of the view, this is an ideal location for lovers of the sea!
- Kids and big kids alike will delight in a stay at Blakeney House, with a games room with a pool table and table tennis, in addition to a lounge and a TV room!
- This sumptuous kitchen, beautifully blending traditional farmhouse style with modern comfort, echoes the quintessential charm of rustic Norfolk just outside these walls!

What you should know...

- Two bedrooms feature zip and link style beds, offering you the choice between a twin setup or a super-king size bed - please let us know in advance how you'd like these arranged!
- A cot and high chair are available on request so just get in touch if you'd like them - please bring your own cot linen.

Terms & Conditions

- **Security deposit:** No security deposit is required for booking this property
- **Arrival time:** 4pm
- **Departure time:** 10am
- **Energy costs included?:** Yes, included the rental price
- **Linen & towels included?:** Yes, included the rental price
- **Pets welcome?:** A maximum of 2 well-behaved dogs are allowed on a request basis. Please note that there is an additional charge of £50 per dog, per stay. Please clean up after your dogs and ensure they stay off furnishings.
- **Other Ts and Cs:** A travel cot & highchair can be provided on request at time of booking. Please bring your own cot linen.
- **Changeover day:** Friday or Monday
- **End of stay cleaning available?:** Yes, included the rental price
- **Smoking Allowed?:** No smoking
- **Other 2:** Please be respectful of neighbours and keep outside noise to a minimum in the evenings.
- **Minimum stay:** Please note that there is a 3-night minimum stay, this may be increased to 7-nights across peak dates
- **Internet access?:** Yes, Wi-Fi is included the rental price

** Please note that due to Covid-19, the check in and out times have been temporarily amended to allow for additional cleaning. Check in is now 5pm, check-out is 9am. Thank you for your understanding.*