

Dunwich Cottage

Region: East Of England Sleeps: 6

Overview

Nestled just a short walk from the enchanting Suffolk coastline, Dunwich Cottage is a traditional cottage which offers six guests a perfectly charming home-from-home!

Inside, each stunning detail exudes a timeless elegance. This beautiful living area offers two large sofas for a little relaxation, as well as superb French doors framing the rooms on either side, both leading out onto your gorgeous garden. There's even a second lounge, with an open fireplace, for even cosier moments of calm, so you can socialise or simply curl up in front of the TV or with a good book and be guaranteed comfort. The kitchen, meanwhile, is a delightfully modern space, with plenty of room and all the latest mod cons to make preparing whatever culinary delights you have in mind simply a breeze! And down the hallway is your majestic dining area, with high vaulted ceilings and luxurious seating – plus superb views over the garden!

Upstairs, in the master bedroom you'll find a luxurious king-size bed set in a cosy space with the same soft whites and creams as the rest of the home, and a fabulous en-suite bathroom with a super walk-in shower. There's a second enchanting double room with an opulent bed frame and magnificent beams across the ceiling, and finally there's a twin bedroom. The final two bedrooms share a second full bathroom with a large bathtub with a shower over.

Head out to your wondrous garden where fabulous furniture offers the chance to dine alfresco in the sunshine, and even fire up the barbecue! There's also a casual seating area for a quiet coffee in the sea air. The beautiful Dunwich beach which stretches for miles into the distance is just a stone's throw from the house, so you can



tuck into a breakfast outdoors before strolling down to the sea!

Facilities

Walk to Beach • Washing Machine • Walking/Hiking Paths • Wi-Fi/Internet
• Walk to Village • Great Value • Rural Location • Cots (Cribs) • Modern •
Cottage • Ideal for Babies & Toddlers • Ideal for Kids • Ideal for Teens •
Tumble Dryer • Dishwasher • Satellite TV • Heating • High Chair(s) •
Parking Space • Outstanding Landscapes • Outdoor Pursuit & Activities •
Tourist Towns & Villages

Interior & Grounds

Ground Floor

- Open-plan living & dining area
- Fully-equipped kitchen

First Floor

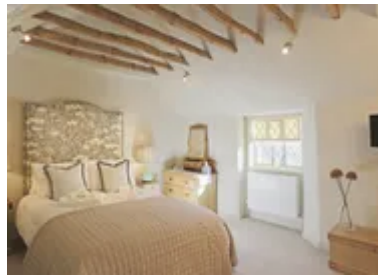
- Bedroom with double bed and en-suite shower room
- Bedroom with double bed
- Bedroom with twin beds
- Family bathroom

Exterior Grounds

- Private terrace
- Dining facilities
- Large shared lawn

Additional Facilities

- Wi-Fi
- TV
- Washing machine & dryer
- Travel cot & highchair available on request
- Parking



Location & Local Information

Tucked in the Suffolk Coasts and Heaths Area of Natural Beauty, Dunwich Cottage is ideally placed to enjoy the peaceful, rural countryside of this picturesque county.

Just step out your front door and soak up these unrivalled views across the stunning landscape - meanwhile the dazzling sea is just seconds from the house, ensuring you needn't worry about planning, directions or driving to enjoy the best bits of this charming county! Some of the finest fish and chips around are in Dunwich, too, so you can relish in the Britishness of fish and chips on the beach!

A 20 minute drive to the north will bring you to Southwold - truly the most quintessentially English seaside town, with a picturesque sandy beach, a promenade lined with beach huts and an unmissable Pier! On a quiet day, head inside this old-fashioned arcade, teeming with bizarre amusements from times gone by for a burst of nostalgia and fun for all ages! Meanwhile, if you fancy a tipple, or even just a fascinating few hours, visit the Adnams Brewery, winner of The Good Pub Guide 2011's 'Brewery of the Year', where brewery tours are on offer throughout the year and you can try some of the huge variety of Adnams beers on offer.

Meanwhile, just 25 minutes to the south, the dazzling town of Aldeburgh, with its highly distinctive architecture, colourful boats and fresh-fish shacks stretching along the beach, is as unique as it is charming. World-renowned for its connection with Benjamin Britten, born in nearby Lowestoft but who spent the last 30 or so years of his life living here, Aldeburgh is believed to have inspired many of the works by the prolific composer.

Local Amenities

Nearest Town	Southwold (14.2km)
Nearest Village	Dunwich (250m)



Nearest Restaurant	The Bell Inn, Walberswick (10km)
Nearest Supermarket	Co-Op Food, Walberswick (9.3km)
Nearest Golf	Southwold Golf Club (14.2km)
Nearest Beach	Dunwich Beach (500m)

What we love

- With two lovely living areas to choose from, you can get cosy in front of the fireplace in the lounge, or else settle in to watch the TV in the main living room!
- Three gorgeous bedrooms offer a perfect cosy space for settling in for a restful night's sleep, with wonderful, plush beds and soothing décor
- The fantastic Dunwich beach is just around the corner so you can simply nip out for a beach stroll or a dip whenever the feeling strikes!

What you should know...

- While there's plenty to see and do without one, we recommend car access throughout your stay as Suffolk is not brilliantly served by public transport
- Unfortunately pets can't be accommodated at Dunwich Cottage

Terms & Conditions

- **Security deposit:** No security deposit is required for booking this property
- **Arrival time:** 4pm
- **Departure time:** 10am
- **Energy costs included?:** Yes, included in the rental price
- **Linen & towels included?:** Yes, included in the rental price
- **Pets welcome?:** No pets
- **Other Ts and Cs:** A travel cot is available on request, please bring your own cot linen.
- **Changeover day:** Friday or Monday
- **End of stay cleaning available?:** Yes, included in the rental price
- **Smoking Allowed?:** No smoking
- **Minimum stay:** Please note that there is a 3-night minimum stay, this may be increased to 7-nights across peak dates
- **Internet access?:** Yes, Wi-Fi is included in the rental price

** Please note that due to Covid-19, the check in and out times have been temporarily amended to allow for additional cleaning. Check in is now 5pm, check-out is 9am. Thank you for your understanding.*