

Silverlake - Woodsford

Region: The South West Sleeps: 8

Overview

Discover the tranquility of Woodsford, a stunning lakeside retreat nestled within the picturesque Silverlake Resort (https://www.oliverstravels.com/silverlake-resort-dorset/) in Dorset. With four comfortable bedrooms, this luxurious holiday house easily accommodates up to eight guests, offering a memorable stay for families and groups alike.

Step inside to find a contemporary retreat adorned with modern amenities and elegant furnishings. The open-plan kitchen, dining and living areas provide views of the surrounding landscape, while plush sofas and a fireplace invite you to unwind in style. Large windows and sliding doors effortlessly capture the stunning surroundings, whilst the rooftop terrace with a putting green and comfy beanbags is truly astonishing. Best of all is the lakefront terrace, equipped with a large al fresco dining table, BBQ, and comfy sofas - perfect for enjoying a refreshing drink after a day full of activities.

Whether you're lounging by the fireplace or preparing a meal in the fully-equipped kitchen, or enjoying a refreshing drink on the lakefront terrace, every moment is infused with comfort and sophistication. Direct access to the lakes, and resort facilities and activities ensures endless opportunities for recreation and relaxation.

Indulge in the ultimate lakeside getaway at Woodsford, where every detail is designed to elevate your experience. From leisurely strolls through the reserve to exhilarating water sports, there's something for everyone to enjoy. Book your stay today and immerse yourself in the serene beauty of Dorset's enchanting landscape.



Facilities

Onsite Restaurants • Horse Riding • Canoeing/Kayaking • Tennis Nearby • Walking/Hiking Paths • Walk to Village • Cycling • Ideal for Kids • Ideal for Xmas/NY • Villa • Tennis Court • Golf Nearby • Fishing • Heated Pool • Special Offer • Cots (Cribs) • Has Discount • Ideal for Teens • Ground Floor Bed & Bath • Modern • <1hr to Airport • Shared Pool • Walk to Restaurant • Parking Space • Wi-Fi/Internet • Waterfront • Rural Location • Washing Machine • Outstanding Landscapes • Outdoor Pursuit & Activities • Hairdryer • Tourist Towns & Villages • Spa/Massage • TV • Gym/Fitness Room • Dishwasher • Satellite TV • Sauna/Steam • Working Fireplace/Woodburner • Heating • Kid-friendly excursions • Water excursions/Boat trips • Playground nearby • Ideal for Babies & Toddlers • High Chair(s)

Interior & Grounds

Woodsford

A newly built modern property with a rooftop viewing area, located in the Silverlake Resort with full activity hub membership. There are 4 bedrooms and 3 bathrooms, and it can accommodate up to 8 people.

Ground Floor

- Entrance hall
- Accessible bedroom with double bed
- Accessible wet room
- Utility room
- Fully equipped, open-plan kitchen with breakfast bar
- Dining area for eight guests
- Lounge area with log burner and access to the decking

First Floor

- Master bedroom with king-size bed and en-suite shower room and balcony
- Bedroom with king-size bed and balcony access
- Children's bedroom with bunk bed and balcony access
- Family bathroom

Roof Terrace

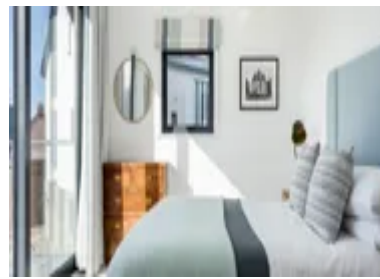
- Relaxing area
- Putting green

Exterior Grounds

- Decking with dining table and sofas
- Bike rack
- Charcoal barbecue
- Lawned garden
- Electric vehicle charging point
- Parking for 4 cars

Additional Facilities

- Wi-Fi
- Satellite TV
- Sonos speakers
- Washing machine
- Travel cot & highchair available on request
- Use of Estate spa and outdoor swimming pool
- Use of Estate tennis courts
- Bike hire
- Watersport equipment hire between March and October (paddleboards, canoes)
- Childrens playground on the estate



Location & Local Information

Woodsford invites you to experience the serene charm of Silverlake Resort, nestled amidst Dorset's picturesque landscapes. Embrace tranquility and outdoor adventure as you explore waterways, cycle paths, and the rolling countryside. Whether paddling in a kayak, canoe or paddleboard, or cycling through the scenic bike trails, adventure awaits at every turn. Enjoy a friendly game on the resort's tennis court or 3G artificial-turf Multi Use Games Area (MUGA) in Beaumont Village, all while admiring the breathtaking views of the lakes. Unwind with a leisurely stroll along the sandy shores of the dramatic UNESCO-heritage Jurassic coastline, such as Ringsted Bay, or try your hand at fishing in our well-stocked lakes.

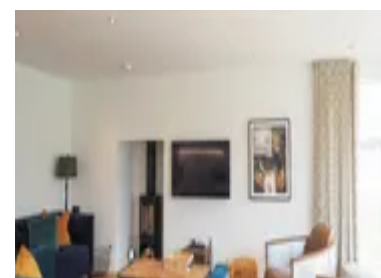
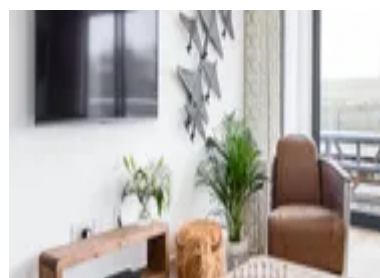
Discover nearby historic landmarks and charming villages, immersing yourself in Dorset's rich heritage. Wander through the breezy coastal town of Poole where you can hop on a ferry to neighbouring islands, uncover the rich history of Dorchester, visit the thousand-year-old Corfe Castle, or soak up the picture postcard vistas of Lyme Regis!

After a day of exploration, the Resort Spa is the perfect respite, where an outdoor pool, roof terrace, sauna, gym, library and a 'restful relaxation' lounge await.

Whether seeking relaxation or excitement, Silverlake Resort offers an unforgettable experience for every guest.

Local Amenities

Nearest Airport	Bournemouth Airport (45.5 km)
Nearest Bar/Pub	On Site (In walking distance)
Nearest Beach	National Trust - Ringstead Bay (10 km)
Nearest Golf	Came Down Golf Club (12.5 km)
Nearest Restaurant	The Wise Man Inn (4.5 km)
Nearest Shop	Co-Op, Crossways (2.5 km)
Nearest Supermarket	Waitrose & Partners, Dorchester (9 km)
Nearest Town/City	Dorchester (9 km)



Nearest Train Station	Moreton Train Station (5.5 km)
Nearest Village	Crossways (2.5 km)
Sightseeing	Durdle Door (16 km)

What we love

- With hundreds of acres of outstanding natural habitats, the outdoor explorations are endless at Silverlake Resort (<https://www.oliverstravels.com/silverlake-resort-dorset/>)!
- The Resort Spa offers offer a tranquil sanctuary of stress-free indulgence and ultimate relaxation!
- The Rooftop putting green and relaxing area offers something really special - a unique feature!
- The ground floor bedroom and bathroom are designed to be accessible for all guests

What you should know...

- Please be aware there are no water-based activities between November and February for health and safety reasons.
- A travel cot and high chair are available to hire, but come at an additional cost of £10. Please bring your own linen and mattress for the travel cot.
- Ample parking is provided for a least four cars, with a wall mounted electric vehicle charge point (type 27 kw) available at the property.
- Access to bikes, canoes, kayaks, and stand-up paddle boards are available, but at an additional cost.

Terms & Conditions

- **Security deposit:** £500 charged to client's credit card and held as a pre-authorisation prior to arrival and refunded a week after departure, subject to full inspection. This is handled by the local team.
- **Arrival time:** 16:00 - 00:00
- **Departure time:** 10:00
- **Energy costs included?:** Yes, included in the rental price.
- **Linen & towels included?:** Yes, included in the rental price.
- **Pets welcome?:** No pets allowed
- **Other Ts and Cs:** A travel cot & highchair are available on request, please bring your own cot linen.
- **Changeover day:** Bookings are available for the following durations only: 7 nights starting on a Monday or Friday, 2 or 3 nights starting on a Friday, or 4 nights starting on a Monday.
- **End of stay cleaning:** Standard changeover clean included in the price. Guests are required to leave the accommodation clean, tidy and in the same condition as on their arrival. Any extra cleaning, laundry, maintenance and/or rubbish disposal required will be charged against the security deposit.
- **Smoking Allowed?:** No smoking.
- **Minimum stay:** 2 nights
- **Heating costs included?:** Yes, included in the rental price.
- **Internet access?:** Yes, Wi-Fi included in the rental price.