

# Silverlake - Willow Cottage

**Region:** The South West   **Sleeps:** 6

---

## Overview

Willow Cottage is a modern home away from home, perfectly located close to the Silverlake Resort's (<https://www.oliverstravels.com/silverlake-resort-dorset/>) amenities and poised to offer access to Dorset's vast and varied wildlife. From the moment you arrive at the Resort, you can immerse yourself in nature, with woodlands, heathlands and rolling countryside spreading out in every direction around you. With three comfortable bedrooms, this luxurious holiday house easily accommodates up to six guests, and with complimentary access to the Spa and swimming pool is offers a memorable stay for families and groups alike!

Step inside to find a contemporary retreat adorned with modern amenities to suit any group. The main kitchen, living and dining space is open plan and is designed to create a social atmosphere for everyone to enjoy. Whilst upstairs, the three bedrooms offer moments of quiet and privacy. Throughout the property large windows have been carefully placed to capture the lake views and bring the outside in. Whilst the plush sofas and log burner create a warm and cosy feel during the colder winter months.

Whether you're lounging by the fireplace or preparing a meal in the fully-equipped kitchen, every moment is infused with comfort and sophistication. Outside, the private lakeside dining table beckons, while direct access to the lake and resort activities and facilities ensures endless opportunities for recreation and relaxation.

Indulge in the ultimate lakeside getaway at Silverlake Resort. Whether you are looking for outdoor adventures, pampering days at the spa or just some quiet time with your loved ones, Willow Cottage is the perfect place.



## Facilities

Onsite Restaurants • Walking/Hiking Paths • Waterfront • Spa/Massage • Horse Riding • Watersports • Canoeing/Kayaking • Historical Sites • TV • Tennis Nearby • Cycling • Hairdryer • Fishing • Golf Nearby • Wi-Fi/Internet • Villa • Shared Pool • Gym/Fitness Room • Cots (Cribs) • Laptop Friendly Workspace • Rural Location • Walk to Village • Modern • Kid-friendly museum • Kid-friendly excursions • Water excursions/Boat trips • Playground nearby • Heated Pool • Ideal for Babies & Toddlers • Ideal for Kids • Ideal for Teens • Walk to Restaurant • <1hr to Airport • Dishwasher • Satellite TV • Sauna/Steam • Working Fireplace/Woodburner • Heating • High Chair(s) • Parking Space • Outstanding Landscapes • Outdoor Pursuit & Activities • Tourist Towns & Villages

# Interior & Grounds

## Willow Cottage

A modern holiday home with beautiful lakeside views. Located in the Silverlake Resort with access to the Resort Spa. There are 3 bedrooms and 2 bathrooms, and it can accommodate up to 6 people.

### Ground Floor

- Fully equipped, open-plan kitchen with breakfast bar peninsula
- Dining area for six guests
- Living room with log burner and access to the decking
- WC

### First Floor

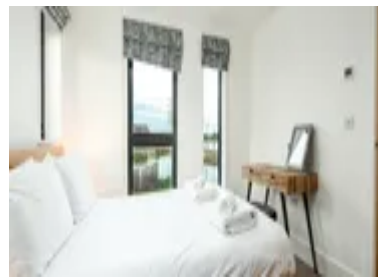
- Master bedroom with double bed and en-suite shower room
- Bedroom with twin beds
- Bedroom with twin beds
- Family bathroom

### Exterior Grounds

- Decking
- Lawned garden
- Lakeside dining table
- Private driveway parking for 2/3 cars

### Additional Facilities

- Wi-Fi
- Satellite TV
- Travel cot & highchair available on request for an additional charge
- Use of Resort spa and outdoor swimming pool
- Use of Resort tennis courts
- Bike hire
- Watersport equipment hire between March and October (paddleboards, canoes)
- Childrens playground on the estate



# Location & Local Information

Willow Cottage invites you to experience the serene charm of Silverlake Resort, nestled amidst Dorset's picturesque landscapes. Embrace tranquility and outdoor adventure as you explore waterways, cycle paths, and the rolling countryside. Whether paddling in a kayak, canoe or paddleboard, or cycling through the scenic bike trails, adventure awaits at every turn. Enjoy a friendly game on the resort's tennis court or 3G artificial-turf Multi Use Games Area (MUGA) in Beaumont Village, all while admiring the breathtaking views of the lakes. Unwind with a leisurely stroll along the sandy shores of the dramatic UNESCO-heritage Jurassic coastline, such as Ringsted Bay, or try your hand at fishing in our well-stocked lakes. The on site rooftop bar and restaurant offer something for everyone, from late afternoon pizza to cocktails with a view. It couldn't be more convenient!

Discover nearby historic landmarks and charming villages, immersing yourself in Dorset's rich heritage. Wander through the breezy coastal town of Poole where you can hop on a ferry to neighbouring islands, uncover the rich history of Dorchester, visit the thousand-year-old Corfe Castle, or soak up the picture postcard vistas of Lyme Regis!

After a day of exploration, the Resort Spa is the perfect respite, where an outdoor pool, roof terrace, sauna, gym, library and a 'restful relaxation' lounge await.

Whether seeking relaxation or excitement, Silverlake Resort offers an unforgettable experience for every guest.

## Local Amenities

Nearest Airport	Bournemouth Airport (45.5 km)
Nearest Bar/Pub	On site (In walking distance)
Nearest Beach	National Trust - Ringstead Bay (10 km)
Nearest Golf	Came Down Golf Club (12.5 km)
Nearest Restaurant	The Wise Man Inn (4.5 km)
Nearest Shop	Co-Op, Crossways (2.5 km)
Nearest Supermarket	Waitrose & Partners, Dorchester (9 km)
Nearest Town/City	Dorchester (9 km)



Nearest Train Station	<b>Moreton Train Station</b> (5.5 km)
Nearest Village	<b>Crossways</b> (2.5 km)
Sightseeing	<b>Durdle Door</b> (16 km)

## What we love

- With hundreds of acres of outstanding natural habitats, the outdoor explorations are endless at Silverlake Resort (<https://www.oliverstravels.com/silverlake-resort-dorset/>)!
- The Resort Spa offers offer a tranquil sanctuary of stress-free indulgence and ultimate relaxation!
- Enjoy a meal around the lakeside dining table, amidst the serene calmness of the water around.

## What you should know...

- While the house is brilliant for family holidays, young children might need supervision to explore the grounds due to the open nature of the area.
- Please be aware there are no water-based activities between November and February for health and safety reasons.
- Access to bikes, canoes, kayaks, and stand-up paddle boards are available, but are subject to additional costs.
- A travel cot and high chair are available to hire, but come at an additional cost of £10. Please bring your own linen and mattress for the travel cot.

# Terms & Conditions

- **Security deposit:** £500 charged to client's credit card and held as a pre-authorisation prior to arrival and refunded a week after departure, subject to full inspection. This is handled by the local team.
- **Arrival time:** 16:00 - 00:00
- **Departure time:** 10:00
- **Energy costs included?:** Yes, included in the rental price.
- **Linen & towels included?:** Yes, included in the rental price.
- **Pets welcome?:** No pets allowed.
- **Other Ts and Cs:** A travel cot & highchair can be provided on request for an additional charge of £10. Please request at time of booking to secure availability.
- **Changeover day:** Bookings are available for the following durations only: 7 nights starting on a Monday or Friday, 2 or 3 nights starting on a Friday, or 4 nights starting on a Monday.
- **End of stay cleaning available?:** Yes. However, guests are required to leave the accommodation clean, tidy and in the same condition as on their arrival. Any extra cleaning, laundry, maintenance and/or rubbish disposal required will be charged against the security deposit.
- **Smoking Allowed?:** No smoking.
- **Minimum stay:** 2 nights
- **Heating costs included?:** Yes, included in the rental price.
- **Internet access?:** Yes, Wi-Fi included in the rental price.