

Tamar Castle

Region: The South West Sleeps: 22

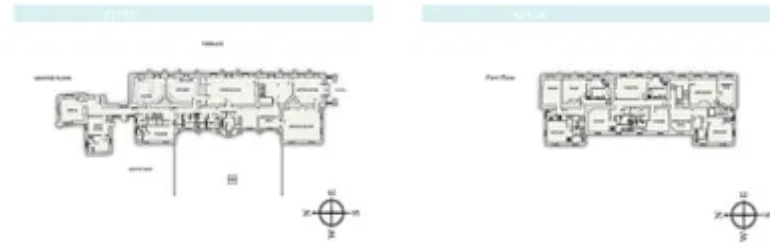
Overview

Tamar Castle holds a tranquil position on the Cornish bank of the River Tamar, just fifteen minutes away from the town of Saltash, often regarded as the "Gateway to Cornwall". The Castle makes a completely unique setting for a holiday, special celebration or wedding and the wonderful memories will certainly last a lifetime.

Dating back to 1698, Tamar Castle boasts infinite charm and character while still possessing all the modern amenities you could possibly need for a contented and relaxed stay. The living accommodation is ideal for socialising and comprises of the elegant drawing room complete with roaring open fire, a formal dining room with seating for twenty-two, a sunny morning room and a fully-equipped family kitchen. The Castle can comfortably sleep up to twenty-two guests across its eleven beautifully-appointed bedrooms, nine of which boast en-suite facilities. On the ground floor is the first of the bedrooms, specially designed with those who struggle with mobility in mind. Upstairs, on the first floor, are a further eight sumptuous, en-suite bedrooms, a number of which can be set up with twin beds on request. The final two bedrooms are situated in the castellated turrets and share a family bathroom.

The gardens are as equally impressive, with fifty-five acres of woodland grounds to explore, there are plenty of beautiful walks to enjoy. During the Summer months, the solar-heated swimming pool is the place to be and provides hours of fun for the whole family! There are multiple terraces complete with dining facilities, ideal for al fresco dining or simply enjoying a peaceful drink in the magnificent surroundings.

As mentioned in... (<https://www.cntraveller.in/gallery/the-loveliest-castles-to-rent-in-england/>)



Condé Nast Traveller

Facilities

Weddings • Private Pool • Walking/Hiking Paths • Ideal for Kids • Chateaux & Castles • Ideal for Teens • Pets on Request • Special Offer • Has Discount • Licensed for Marriage • Cots (Cribs) • Marquee Hire Permitted • Quirky (Unique) • Outdoor Ceremony • Instagrammable • Ground Floor Bed & Bath • Flexible Catering Options • Allow Ceremonial Fire • Heritage Collection • Wi-Fi/Internet • Allow External Caterers • Allow Fireworks • Rural Location • Indoor Reception Available • Outstanding Landscapes • Nearby Church/Chapel • Outdoor Pursuit & Activities • Tourist Towns & Villages • Pool/Snooker • Games Room • Indoor Games • Electric Car Charger • Satellite TV • Sauna/Steam • Working Fireplace/Woodburner • Heating • Caretaker/Owner on Site • Ideal for Babies & Toddlers

Interior & Grounds

Lower Ground Floor

- Games room with small billiard/snooker table

Ground Floor

- Entrance hall
- Drawing room with log fire
- Dining room
- Family fully-equipped farmhouse kitchen and pantry
- Morning room with terrace access
- Warren Suite with double bed and en-suite wet room (*can be set up with twin single beds on request*)
- Office

First Floor

- Dewhurst Suite with four-poster double bed and en-suite bathroom and dressing room
- Coryton Suite with super-king bed and en-suite bathroom
- Tillie Suite with king-size bed and en-suite bathroom
- Spencer Suite with super-king bed and en-suite bathroom (*can be set up with twin single beds on request*)
- Victor Suite with super-king bed and en-suite bathroom (*can be set up with twin single beds on request*)
- Howard Suite with twin single beds and en-suite bathroom
- Parker Suite with super-king bed and en-suite bathroom (*can be set up with twin single beds on request*)
- Kitson Suite with twin single beds and en-suite shower room

Second Floor (Turrets)

- Bayly Suite with twin single beds
- Wyndham Suite with double bed
- Family bathroom

Exterior Grounds

- Solar-heated swimming pool
- Multiple terraces
- Dining facilities
- Fire pit
- 55 acres of woodland grounds

Additional Facilities

- Wi-Fi
- TV
- Travel cots can be provided on request
- Parking for 20 cars
- Tesla charging point x2
- Universal EV charging point

** The Warren Suite has been designed specifically for disabled use. The en-suite wet room features a height adjustable shower and shower seat. There are call alarms fitted in the bedroom and shower room. All doors and openings on the ground floor are more than 3 feet wide allowing easy wheelchair access.*



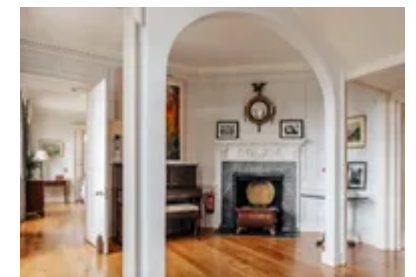
Location & Local Information

Tamar Castle is situated just a 15-minute car journey from the town of Saltash, where a wide variety of helpful amenities, including shops and restaurants, can be found. Saltash is often known as the "Gateway to Cornwall" and therefore Tamar Castle is well located for those wanting to explore both Devon and Cornwall.

There is plenty to do, see and explore in Devon and Cornwall within easy reaching distance of the Castle. In Devon, the popular port city of Plymouth is just 20-minutes away while the rugged Dartmoor National Park is 30-minutes away. A number of excellent Cornish beaches including Whitsand Bay, Dandery and Tregantle Beaches are all less than half an hour away. The Cornish seaside town of Looe and the picturesque fishing village of Polperro are both less than 40-minutes away and well worth a visit. The Eden Project, home to the iconic botanical gardens, is less than 45-minutes drive away.

Local Amenities

Nearest Town	Saltash (8km)
Nearest Restaurant	The Weary Friar Inn, Pillaton (5.3km)
Nearest Supermarket	Waitrose, Saltash (6.4km)
Nearest Golf	China Fleet Country Club (9.5km)
Nearest Beach	Tregantle Beach (23km)



What we love

- Magnificent location for exploring all that Devon and Cornwall, with sandy beaches, picturesque villages and beautiful countryside in easy reaching distance
- During the Summer, hours of fun will be spent splashing around in the solar-powered swimming pool!
- Steeped in history, Tamar Castle boasts elegant interiors throughout making it the perfect setting for a special occasion stay
- There is a disabled-friendly bedroom and wheelchair access on the ground floor - ideal for any guests with mobility difficulties

What you should know...

- Children should be supervised by a responsible adult at all times when in or in the vicinity of the swimming pool and when exploring the large grounds due to the access to the River Tamar
- While nine of the bedrooms feature en-suite facilities, two share the use of a family bathroom
- There are 3 cots and 3 blow up beds available (12 yrs and younger) at £30 each. Also, 3 highchairs and stairgate (no charge).
- Solar-heated outdoor swimming pool (open for swimming from April to October and available unheated throughout the winter as a "cold plunge")
- Private sauna, seating up to 8 guests (with 1 session included within your stay, additional sessions charged at £50 for 1-2 hours)

Terms & Conditions

- **Security deposit:** £1,000 to be paid prior to arrival and to be refunded in full subject to a damage inspection on departure
- **Arrival time:** 5pm
- **Departure time:** 10am
- **Energy costs included?:** Yes, included in the rental price
- **Linen & towels included?:** Yes, included in the rental price
- **Pets welcome?:** A maximum of 4 well-behaved dogs are allowed on request basis for an additional charge of £15 per dog, per night. The dogs are only permitted to sleep in the Howard, Kitson or Warren bedrooms. They must stay off all furnishings. Please clean up after your dogs and ensure they are on the lead at all times in the grounds.
- **Other Ts and Cs:** No stag or hen do's.
- **Changeover day:** During the year changeover on Monday, Tuesday, Thursday, Friday or Sunday only. From mid-July to August changeover day on Monday, Friday and Sunday only.
- **End of stay cleaning:** Standard changeover clean included in the price. Guests are required to leave the accommodation clean, tidy and in the same condition as on their arrival. Any extra cleaning, laundry, maintenance and/or rubbish disposal required will be charged against the security deposit.
- **Smoking Allowed?:** No smoking
- **Minimum stay:** Please note that there is a 2-night minimum stay, this is increased to 7-nights across peak dates.
- **Internet access?:** Yes, Wi-Fi is included in the rental price