

Aslacton Granary

Region: East Of England **Sleeps:** 14

Overview

Aslacton Granary offers a mind-blowing feast of beauty, stylish decor, olde world curios, extravagance and stunning opulence. This dreamy conversion is the ultimate group retreat. Situated in Aslacton, close to the vibrant city of Norwich and the iconic Norfolk Broads, this outstanding holiday home sleeps a maximum of fourteen guests in seven heavenly bedrooms. Even the bedroom names of Gothic Arches, Gold Boudoir, China Blue give you a quick insight as to the meticulous attention to detail and ambience of this fantastic home.

This historic carcass has had architects and interior designers in their element blending high-end contemporary chic with ancient charm. A feeling of time gone by hangs lovingly throughout this brilliant building. As soon as you reach the driveway, you will quickly realise that you are in for a treat. Every space is a delight with handpicked artworks, furnishings and quirky touches. Throughout, you will find traditional lofty ceilings complete with warm, restored beams and flagstone floors in true country style.

In sumptuous style, long sofas stretch invitingly in the huge living room. With one wall of glass, you can admire your private estate and ponder your blessings. The Garden Room is a mass of seating with sapphire cushion accents and fabulous views of the patio garden. The manicured box hedges and the babbling fountain are all delights.

The rustic country kitchen is a wonder beneath the barn's age-old woodwork. It offers an Aga that sits gloriously in the feature brick fireplace and masses of cupboards. It leads to the ambient dining room with trendy lights strung amongst the wooden beams. All around you will be mesmerised by ancient weighing scales, age old display



cabinets once used for salves and balms, family hair oil, tonics and cures and old sewing machines displayed on the walls. It is quirky, eye-catching and a wonderful holiday tonic!

Each of the seven bedrooms is lavishly decorated and adorned. You will find four posters, sumptuous sleigh beds, Juliette balconies, chandeliers, exposed beams, painted floor boards, walls covered with plates and artefacts and butterfly collections. Every bedroom is a wonder, highly impressive and superbly comfortable. Five of the bedrooms are situated on the ground floor, one with an en-suite shower room and also a beautiful family bathroom. The remaining two bedrooms are located on the first floor, both with en-suite bathrooms. Like the bedrooms, the bathrooms are quirky palaces with fascinating decor. All of the bedrooms boast smart televisions.

The gardens and terraces are incredible. Long trestle tables provide more than enough room for everyone to sit down in the Norfolk sunshine. You can enjoy barbecues or pizzas fired in your very own charcoal oven. Throughout the gardens you will find absolute joy. There are gorgeous lily ponds where you can perch at bistro tables, fabulous lush lawns, mature planting in the beds, a wonderful tennis court and even a hot tub where you can chill, enjoy a glass of fizz and breath the lovely fresh air.

Facilities

Wi-Fi/Internet • Tennis Court • Golf Nearby • Fishing • Ground Floor Bed & Bath • Washing Machine • Cycling • Historical Sites • Horse Riding • Walking/Hiking Paths • Special Offer • Has Discount • Great Value • Quirky (Unique) • Rural Location • Cots (Cribs) • Barn • Ideal for Kids • Ideal for Teens • Hot Tub • Walk to Restaurant • Tumble Dryer • Dishwasher • Smart TV • High Chair(s) • Fenced Grounds • Parking Space • Outstanding Landscapes

Interior & Grounds

Ground Floor

- Sitting room with 55" Smart TV
- Fully-equipped kitchen
- Dining room
- Bedroom with twin sleigh beds, doors to the courtyard garden and en-suite shower room
- Bedroom with king-size four-poster bed and doors to the courtyard garden
- Family shower room
- Bedroom with king-size bed and en-suite cloakroom
- Family bathroom
- Bedroom with double bed
- Bedroom with king-size bed and doors to the courtyard garden

First Floor

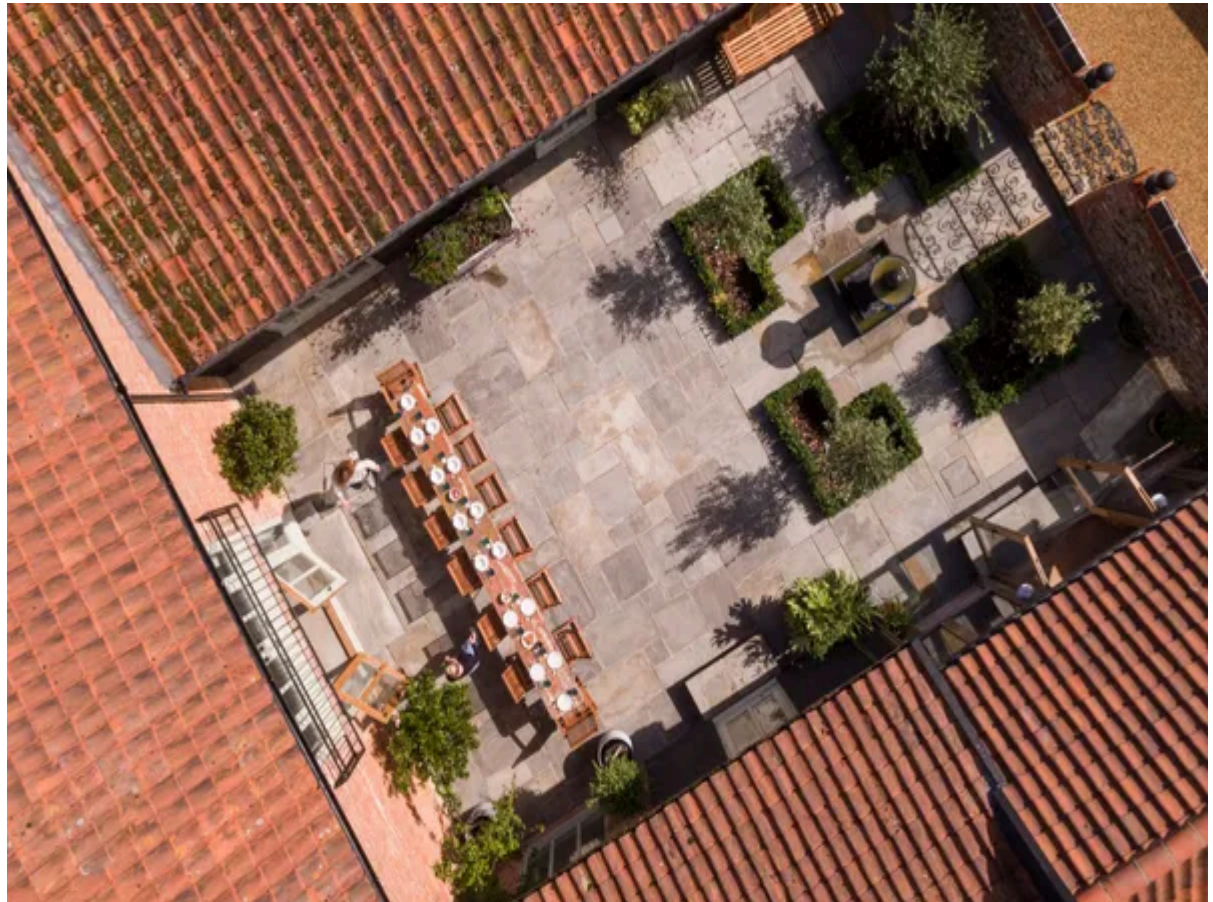
- Bedroom with king-size bed, Juliette balcony and en-suite shower room
- Bedroom with twin brass iron beds and en-suite bathroom

Exterior Grounds

- Enclosed courtyard garden
- Dining facilities
- Barbecue space with gas barbecue and pizza oven
- Hot tub, to be booked at least 2 days before arrival and with an extra fee of £150.
- Access to the owner's tennis court on request
- Uncovered pond (*please supervise children at all times*)

Additional Facilities

- Wi-Fi
- TV
- Washing machine & dryer
- Hairdryers
- Travel cot & highchair available on request (*please bring your own cot linen*)
- Parking for 5 cars



Location & Local Information

Aslacton is a quiet, historic village, south west of the wonderful market town of Norwich. Its church dates from 996AD and is one of 124 existing round-tower churches in Norfolk. Norwich is an absolute delight. It boasts cosy pubs including The Fat Cat and St Andrew Brew House where delicious craft beers are made on the premises. So say, it offers the best fish and chips in East Anglia to the sounds of jazz at the Grosvenor Fish Bar. Norwich Cathedral stands in all its majesty with the ancient beauty of stained glass windows, a booming organ and hushed cloisters. Set in peaceful grounds brimming with grassy squares and handsome houses, it is a viewing station for peregrine falcons that nest in the cathedral's spire. Norwich also boasts dozens of churches from its medieval heyday, some of which have been repurposed into cultural and exhibition spaces such as the Norwich Arts Centre. The Forum is a huge glass edifice and the home of BBC Norwich as well as being a thriving library and boasting restaurants and a bustling cafe. Norwich open-air market delights shoppers with traditional fruit and veg stalls alongside gourmet tea and coffee vendors, artisanal bakers and others.

Locals often refer to the area of the Norfolk Broads as 'Broadland'. The beautiful Rivers Yare, Ant, Waveney, Chet and Bure meander their leisurely way through Norfolk and Suffolk connecting beautiful inland lakes, creating waterways and wetlands that make up The Norfolk Broads. Wildlife is abundant and conservation has been very successful in reintroducing species such as otters and herons that struggled for some time to survive. To the eastern side of the Norfolk Broads, the sandy beaches and stunning coastline caress the Broads at Horsey Mere with the salt water of the North Sea coming within a hare's breathe of the fresh water. Grey and common seals thrive on the shoreline. Boat hire is very popular and an absolute must!

Visitors staying at Aslacton Granary also enjoy visiting the magical North Norfolk coastline for its endless beaches and huge skies. It is also very easy to visit the magical



seaside resort of Southwold. Southwold lies between the pretty resort of Aldeburgh and the bustling town of Lowestoft. The town is almost an island, being bounded by the North Sea to the East, by the River Blyth and Southwold Harbour to the South West and by Buss Creek to the North. There is only one road in and out of the town which adds to its seaside magic. Southwold is home to the famous Adnams Brewery. Adnams offer brewery tours throughout the year and you can sample the tasty pints everywhere. Visitors enjoy various boat trips with the Coastal Voyage being one of the most popular. At high speed, the boat is put through formidable paces in a 30 minute tour where you will enjoy marsh harriers, herons, gulls and possibly osprey.

Local Amenities

Nearest City	Norwich (25.7km)
Nearest Town	Diss (14.2km)
Nearest Restaurant	Fox & Hounds, Great Moulton (2.8km)
Nearest Supermarket	Tesco Superstore, Diss (15.1km)
Nearest Golf	Diss Golf Club (18.8km)
Nearest Beach	Lowestoft (49.8km)

What we love

- Wow! What a magical, fascinating space. With fantastic attention to detail, this luxury holiday home is mesmerising and superbly comfortable. It really is the ultimate group retreat
- The courtyard garden is a delight where guests can assemble together and enjoy this fabulous setting. The grounds are extensive with mature gardens, a hot tub, tennis court and wonderful big blue Norfolk skies
- Every bedroom in this wonderful retreat is very special. Sometimes you need to draw straws but in this sensational home, every guest will be supremely happy with their room

What you should know...

- A vast number of the bedrooms are situated on the ground floor with garden access
- There is a pond in the garden so please ensure young children are supervised at all times
- Aslacton Granary boasts a wonderful Aga. You may want to brush up on some special Aga recipes before you arrive. Or there again, you may be very happy to barbecue and use the pizza oven!
- The Hot Tub can be used but an extra fee will be applied

Terms & Conditions

- **Security deposit:** No security deposit is required for booking this property
- **Arrival time:** 5pm
- **Departure time:** 9am
- **Energy costs included?:** Yes, included in the rental price
- **Linen & towels included?:** Yes, included in the rental price
- **Pets welcome?:** No pets
- **Other Ts and Cs:** NO stag/hen do's or parties allowed. Please be respectful of neighbours and keep noise to a minimum in the evenings.
- **Changeover day:** Friday
- **End of stay cleaning available?:** Yes, included in the rental price
- **Smoking Allowed?:** No smoking
- **Other 2:** The Hot Tub has to be booked at least 2 days before arrival. An extra fee of £150 will be applied.
- **Other 3:** Please be advised that car charging at this property is strictly prohibited.
- **Minimum stay:** Please note that there is a 3-night minimum stay, this is increased to 7-nights across peak dates such as school holidays
- **Internet access?:** Yes, Wi-Fi is included in the rental price