

Austen House

Region: The South East **Sleeps:** 14

Overview

Austen House holds a spectacular location within the popular neighbourhood of Marylebone. This area is best known for its Georgian homes, independent shops and of course Baker Street, home to Sherlock Holmes! All just a short distance from the hustle and bustle of world-famous Oxford Street, Regents Park and Hyde Park.

The five-storey townhouse, once owned by Jane Austen's brother Henry, can comfortably accommodate up to fourteen guests across its seven beautifully-appointed bedrooms. The home has been designed with incredible attention to detail, a glamorous re-imagining of the Regency period, taking inspiration from Henry and Eliza's reported life at the house and as part of wider London society.

Austen House makes a wonderful setting for a family celebration or reunion of friends, the living areas are ideal for socialising and entertaining, enjoy afternoon tea in Jane's Sitting Room while M Halavant's Pantry is ideal for private dinners. The seven elegant bedrooms, all individually designed and featuring either super-king, double or twin beds, are split across the four levels and each feature en-suite facilities.

Facilities

Air-Con • City Homes & Apartments • Walking/Hiking Paths • Historical Sites • Ideal for Xmas/NY • Quirky (Unique) • Wow Factor • Special Offer • Has Discount • Ideal for Teens • Manor • All Bedrooms En-Suite • Instagrammable • Ground Floor Bed & Bath • Parking Space • Walk to Restaurant • Wi-Fi/Internet • Outstanding Landscapes • Hairdryer • Outdoor Pursuit & Activities • Tourist Towns & Villages • Satellite TV • Heating



Interior & Grounds

The House

Interior

Ground Floor

- Jane's sitting room
- M Halavant's Pantry, fully-equipped kitchen with dining facilities
- "Henry" bedroom with double four poster bed and en-suite bathroom with roll top bath tub

First Floor

- The Carriage Snug
- "Eliza" bedroom with king-size four poster bed and en-suite bathroom with roll top bath tub
- "Cassandra" bedroom with super-king bed and en-suite bathroom with roll top bath tub *(can be set up with twin beds on request)*

Second Floor

- "Frank" bedroom with twin canopy beds and en-suite shower room
- "James" bedroom with king-size four poster bed and en-suite shower room

Third Floor

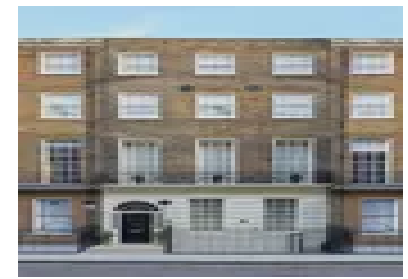
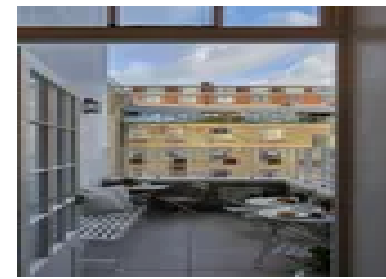
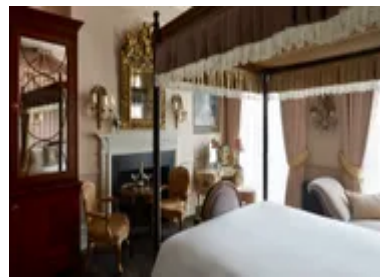
- "Phylly" bedroom with super-king bed and en-suite shower room
- "Charles" bedroom with super-king bed and en-suite shower room *(can be set up with twin beds on request)*

Exterior Grounds

- Terrace with bistro seating

Additional Facilities

- Wi-Fi
- Air conditioning
- TV
- Bathrobes
- La Bruket Sweden Organic Bath Amenities
- Dyson Hairdryers

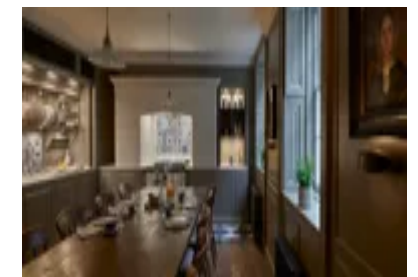
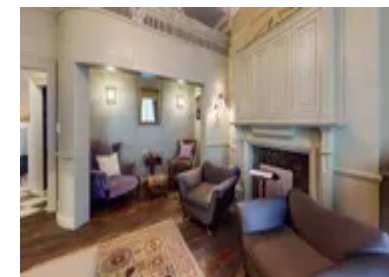


Location & Local Information

Austen House holds a marvellous location within Marylebone, set between the hustle and bustle of Oxford Circus and the green open space of Regent's Park. A huge number of independent shops and excellent restaurants are available within walking distance, Bernardi's, Chiltern Firehouse, Trishna and Xier are all under 10-minutes away. There are a wide variety of fantastic family-friendly attractions in the surrounding area including, London Zoo, The Royal Academy of Music, The Wallace Collection, Madame Tussauds & the Sherlock Holmes Museum. The central line tube station, Marble Arch, is less than 500m away, opening up the rest of the city.

Local Amenities

Nearest Airport	London Heathrow Airport (23 km)
Nearest Supermarket	Marble Arch Underground Station (500 m)
Nearest Supermarket	Waitrose (500 m)



What we love

- Fabulous location in Marylebone, within walking distance of a variety of amenities and attractions. The local property managers can recommend the latest restaurant openings and help you to secure reservations...
- The home boasts sumptuous interiors throughout with unique antiques and original pieces sourced from around the world - pure luxury!
- Austen House is under the same ownership as Cotswold Manor Estate (<https://www.oliverstravels.com/britain-ireland/cotswolds/cotswold-manor-estate/>), an ideal two centre holiday for those wishing to explore both London and the Cotswolds
- The rental rates include daily breakfast - the perfect way to set you up for a busy day of exploring the capital!

What you should know...

- Due to the character of the home, the bedrooms are set over multiple levels which may not suit all groups
- One of the bedrooms features twin beds and is therefore better suited to friends or siblings sharing
- Please note that Austen House comes with a parking space, though it is located a short walk away in an underground car park.

Terms & Conditions

- **Security deposit:** £1,000 to be paid prior to arrival and to be refunded in full subject to a damage inspection on departure
- **Arrival time:** 16:00
- **Departure time:** 10:00
- **Energy costs included?:** Yes, included in the rental price
- **Linen & towels included?:** Yes, included in the rental price
- **Pets welcome?:** No pets
- **Changeover day:** Friday
- **End of stay cleaning:** Standard changeover clean included in the price. Guests are required to leave the accommodation clean, tidy and in the same condition as on their arrival. Any extra cleaning, laundry, maintenance and/or rubbish disposal required will be charged against the security deposit.
- **Smoking Allowed?:** No smoking
- **Minimum stay:** Please note that there is a 2-night stay, this may be increased across peak dates
- **Internet access?:** Yes, Wi-Fi is included in the rental price