

# Villa Milani

**Region:** Almancil   **Sleeps:** 8

---

## Overview

Set in a quiet residential area on the hillside only 8km from the centre of the small city of Loulé this beautiful pink property with traditional square chimneys, luscious gardens, fantastic swimming pool and four ensuite bathrooms will comfortably accommodate up to eight guests, making Villa Milani an excellent choice for a family holiday or a golf break with friends.

The entrance to the property is so charming, a large cobbled area with large urns planted out with stunning Aeoniums guard the front door.

The spacious lounge and dining area are open plan, the lounge area furnished with large comfortable sofas and side tables set around the tv and fireplace, it has access directly to a fabulous furnished terrace overlooking the pool, the dining area also has access to the terrace and leads you through to the superbly appointed kitchen.

Of the four bedrooms two are on the ground floor, a delightful double room with patio doors accessing the garden and a twin room. Upstairs the further two bedroom each have private bathrooms and access to a private enclosed furnished terrace with stunning views over the grounds and countryside beyond.

The poolside terrace really has the WOW factor, the 8m x 12m pool with tiled surround merges with the landscaped gravel part of the garden with loungers strategically placed under branches of tall palms offering shade, the other end of this terrace houses a huge gazebo covering the outdoor dining area, several loungers and large built in BBQ.

The private garden area is just sublime, the pink of the villa walls, the bright blue 8m x 12m swimming pool, the



verdant green of the lawns, the magnificent mature shade giving trees and the occasional flash of pink from the flowers of the ubiquitous bougainvillea, the secluded spots and small intimate areas dotted around the periphery along with fabulous pots and even a fountain feature make for a dream like space you may not want to leave to explore all that the Algarve has to offer.

## Facilities

Wi-Fi/Internet • Villa • Great Value • Tennis Nearby • Cots (Cribs) • Beach Nearby • Air-Con • Golf Nearby • Private Pool • Ideal for Babies & Toddlers • Ideal for Kids • Ideal for Teens • <1hr to Airport • Ground Floor Bed & Bath • Satellite TV • Fenced Grounds • Outstanding Landscapes • Outdoor Pursuit & Activities • Tourist Towns & Villages • Historical Sites

# Interior & Grounds

## The Villa

Set in a quiet residential area on the hillside only 8km from the centre of the small city of Loulé this beautiful pink property with traditional square chimneys, luscious gardens, fantastic swimming pool and four ensuite bathrooms will comfortably accommodate up to eight guests, making Villa Milani an excellent choice for a family holiday or a golf break with friends.

### Ground Floor

- Ample living room with comfortable sofas, decorative fireplace, satellite TV and access to the terrace
- Open plan dining area for 8 people and access to the terrace
- Well equipped american kitchen with oven, dishwasher, 4 ceramic glass hob hotplates, microwave, freezer and electric coffee machine
- Shower room
- Bedroom with french bed (160 x 200 cm) and access to the terrace
- Bedroom with two single beds pushed together (105 x 200 cm) and en-suite bathroom

### First Floor

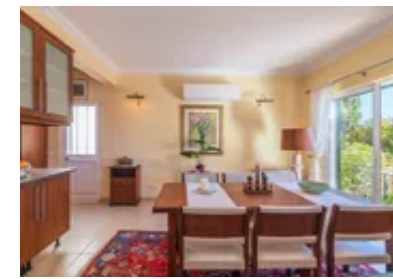
- Master bedroom with king size bed (180 x 200 cm), access to a private balcony, air conditioning and en-suite bathroom
- Bedroom with two single beds (90 x 200 cm), air conditioning and access to a balcony

### Exterior Grounds

- Private swimming pool (8 x 12 m, depth 100 - 200 cm, opening dates: 01.01.-31.12)
- Childrens pool (3 x 3 m, depth 115 - 115 cm, opening dates: 01.01.-31.12)
- Large patio and garden area
- Covered terrace
- Outdoor dining
- Various sun loungers
- Garden furniture
- Various parasols
- Private parking
- Barbecue

### Additional Facilities

- Wi-Fi connection
- Air-conditioning
- Washing machine
- Cot available
- Satellite TV



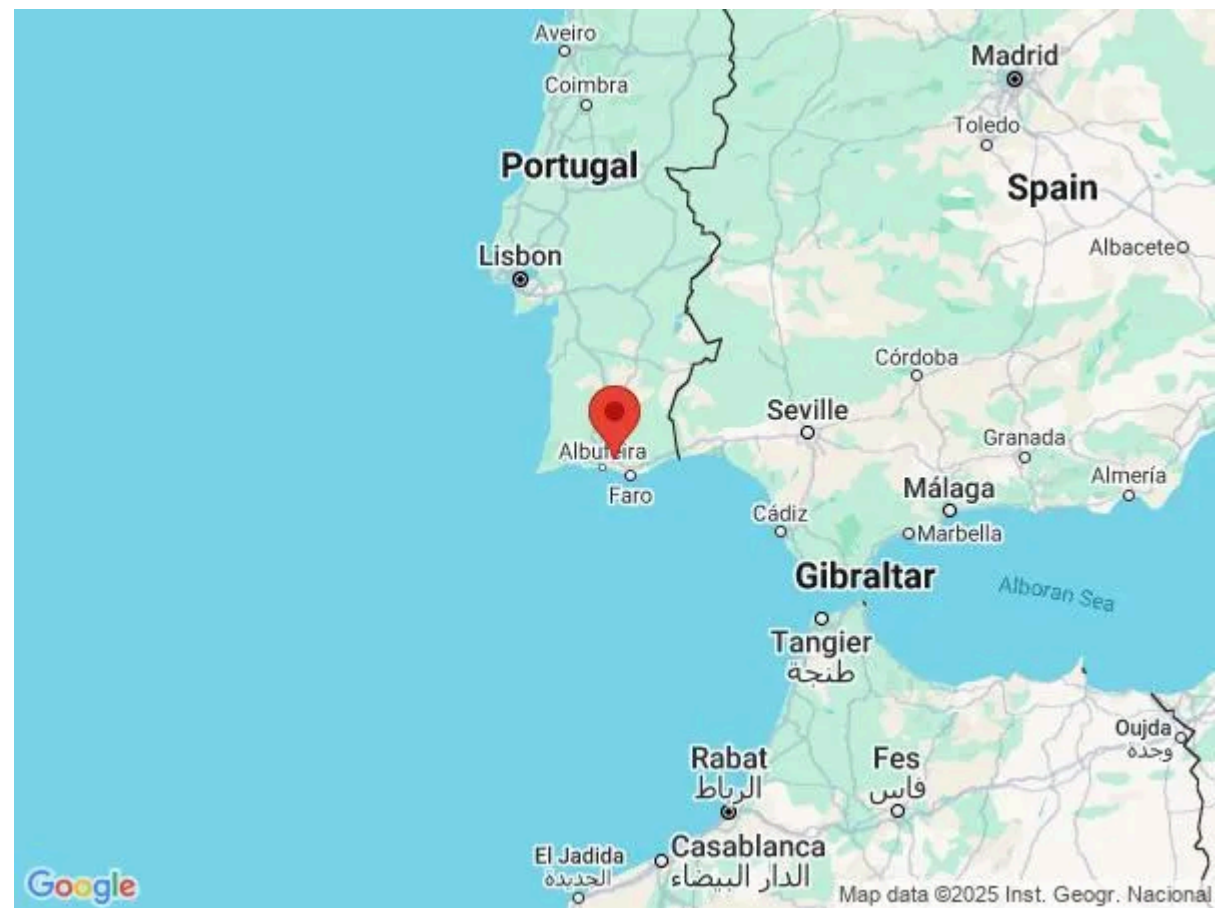
## Location & Local Information

Villa Milani is only 8km from the beautiful small city of Loulé in the Algarve, there is a small café nearby, but more choice is available in Loulé itself where you have a great choice of cafes, bars, restaurants, small shops and a few supermarkets for your essentials. The nearest sandy beach is the stunning Alameda Praia da Marina in the beautiful village of Vilamoura some 14km away.

Loulé, was originally founded as a Roman fort, some time later it was an Arabian town called Al-Aliya, the preserved the ruins of its medieval castle, city wall, narrow streets (in particular Rua da Barbacã) and some interesting churches bear testimony to its past. The most important characteristic of this region is the simplicity of its architecture, its traditions, and the way of life of the people, the hinterland of the Algarve has not changed as quickly as the coastal regions.

One of the most interesting places in Loulé is Mercado de Loulé, the municipal market, where most locals buy their groceries, on certain days there are additional artisan stalls and even a gipsy market. Another is the shrine of Nossa Senhora da Piedade which can be seen from all around, it looks for all the world like a spaceship. You often see pilgrims making their way up the hill towards it, it is quite a hard walk but worth it for the views.

If you have a day exploring the more traditional villages of Algarve why not visit Tavira, it straddles the Gilão River, which reaches the sea through the inlets and lagoons of Ria Formosa Natural Park. Tavira Island has a long, sandy beach, plus salt pans that attract flamingos, spoonbills and other wading birds. Quarteria is beautiful old fishing village to visit it has a lovely beach and beautiful cobbled promenade lined by mature palms and lots of tiny fish restaurants. For something completely different take one of the river cruises from Portimão to Silves, the ancient capital of the Algarve, passengers have time to explore this beautiful small city and discover its history, during the return river trip refreshments are served, it is a magical trip especially on a late afternoon sailing should the tide be in





your favour.

If you were to come to the Algarve for a golfing holiday, it offers some of the best links style courses in Europe. At Quinta do Lago you have a choice of three courses, one of which often hosts the Portuguese open. It also benefits from having other sporting facilities on site should some of your party not be golfers. Vale do Lobo is another luxury resort designed with golf in mind and is home to two of the most challenging and outstanding golf courses in the Algarve. The Royal, considered to be one of the most prestigious courses in Portugal, and the Ocean, a challenging course composed of the two original golf courses which were designed by Sir Henry Cotton offers the best views around and an unforgettable experience.

If you'd rather spend your holiday on the beach than on the golf course, the Algarve has mile upon mile of golden sands and clear waters. The beach in Praia de Dona Ana beach is considered to be one of the most picturesque with its dramatic backdrop of red sandstone cliffs, there's nothing better than spending a day relaxing underneath the warm Portuguese sun.

Local Amenities

Nearest Airport	Faro Airport (30 km)
Nearest Ferry Port	Faro Ferry Port (29 km)
Nearest Village	Pocanco de Paragil (2 km)
Nearest Town/City	Loule (9 km)
Nearest Restaurant	Tasca da Fonte (4 km)
Nearest Bar/Pub	Cisco's Bar (4 km)
Nearest Supermarket	Attent Holandes (6 km)
Nearest Beach	Falesia Beach (12 km)

Nearest Golf	<b>Pine Cliffs Golf Course</b> <b>(12 km)</b>
Nearest Tennis	<b>Annabel Croft Tennis Academy</b> <b>(13 km)</b>

## What we love

- The stunning bedrooms on the upper level with terrace views over the surrounding olive groves
- The secret areas within this beautifully maintained garden
- Villa Milani is ideal retreat for friends or family group looking for a laidback holiday

## What you should know...

- Due to the rural setting of Villa Milani the hire of a car is recommended for exploring
- Private parking is available

# Terms & Conditions

- **Security deposit:** €400 paid in cash to the owner upon arrival and refunded upon departure, subject to full inspection
- **Arrival time:** 4:00 pm
- **Departure time:** 10:00 am
- **Energy costs included?:** Yes, included in the rental price
- **Linen & towels included?:** Bed linen, bath and pool towels are included in the rental price
- **Pets welcome?:** Not allowed
- **Changeover day:** Saturday during peak season, flexible during other periods
- **End of stay cleaning available?:** Yes. However, guests are required to leave the accommodation clean, tidy and in the same condition as on their arrival. Any extra cleaning, laundry, maintenance and/or garbage disposal required will be charged against the security deposit
- **Smoking Allowed?:** Smoking & Vaping are not permitted
- **Minimum stay:** 7 nights during peak season, 5 nights during other periods. All other durations on request
- **Pool heating charge?:** Not available at this property.
- **Tax:** Tourist tax is currently not required within the municipality of this villa, however many councils are introducing this across Portugal, so you may be required to pay this at time of travel.
- **Internet access?:** Wi-Fi internet access included in rental price