

Fuji Suite

Region: Koh Pha Ngan **Sleeps:** 3

Overview

Step into the enchanting world of Fuji Suite, where tradition meets comfort. Nestled on a hill within an elegant Thai-style structure, this suite invites you to unwind with direct access to the expansive Saaitara pool right from your private veranda adorned with intricate Thai arch carvings. Revel in the serene ambience of the mountains and tropical coconut groves while lounging on unique sunbeds designed to enhance your relaxation experience.

Inside, the suite features a king-sized bed, a cosy sofa bed, and a balcony fitted with a teakwood patio set, perfect for savouring your morning coffee or evening tea. Modern amenities include an LCD TV with satellite channels, a DVD/CD player, complimentary Wi-Fi, and a minibar. The bathroom offers a separate shower and bathtub, plush bathrobes, slippers, and premium toiletries, ensuring a refreshing and delightful stay. With free shuttle service throughout the resort, your comfort and convenience are always prioritized.

Facilities

Seaview • Resort Villa • Hairdryer • Wi-Fi/Internet • Air-Con • Boat Trips • Watersports • Walking/Hiking Paths • Walk to Beach • Romantic • Maid Service Available • Great Value • Walk to Village • DVD • Shared Pool • Beach Nearby • Transfers Available • On-Site Concierge • Breakfast Included • Meal delivery service • Walk to Restaurant • Safety Deposit Box • All Bedrooms En-Suite • Satellite TV • Outstanding Landscapes • Outdoor Pursuit & Activities



Interior & Grounds

Interior

- Bedroom with king size bed and access to a terrace
- Bathroom with bathtub and walk-in shower

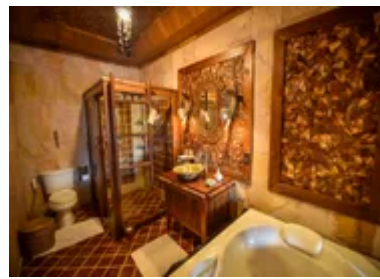
Exterior

- Access to a share swimming pool
- Ample terrace area
- Outdoor dining

Additional Facilities

- Tea & coffee making facilities
- Minibar
- An LCD TV with satellite channels and a DVD/CD player
- Slipper and Bathrobe
- Mosquitoes net
- Complimentary 4 bottles of water daily
- Complimentary Wi-fi Internet Access
- Hairdryer
- Luxurious bathroom amenities
- Air conditioning

****Please note that these properties are all of a similar style, but may vary in layout, surroundings and furnishings.*



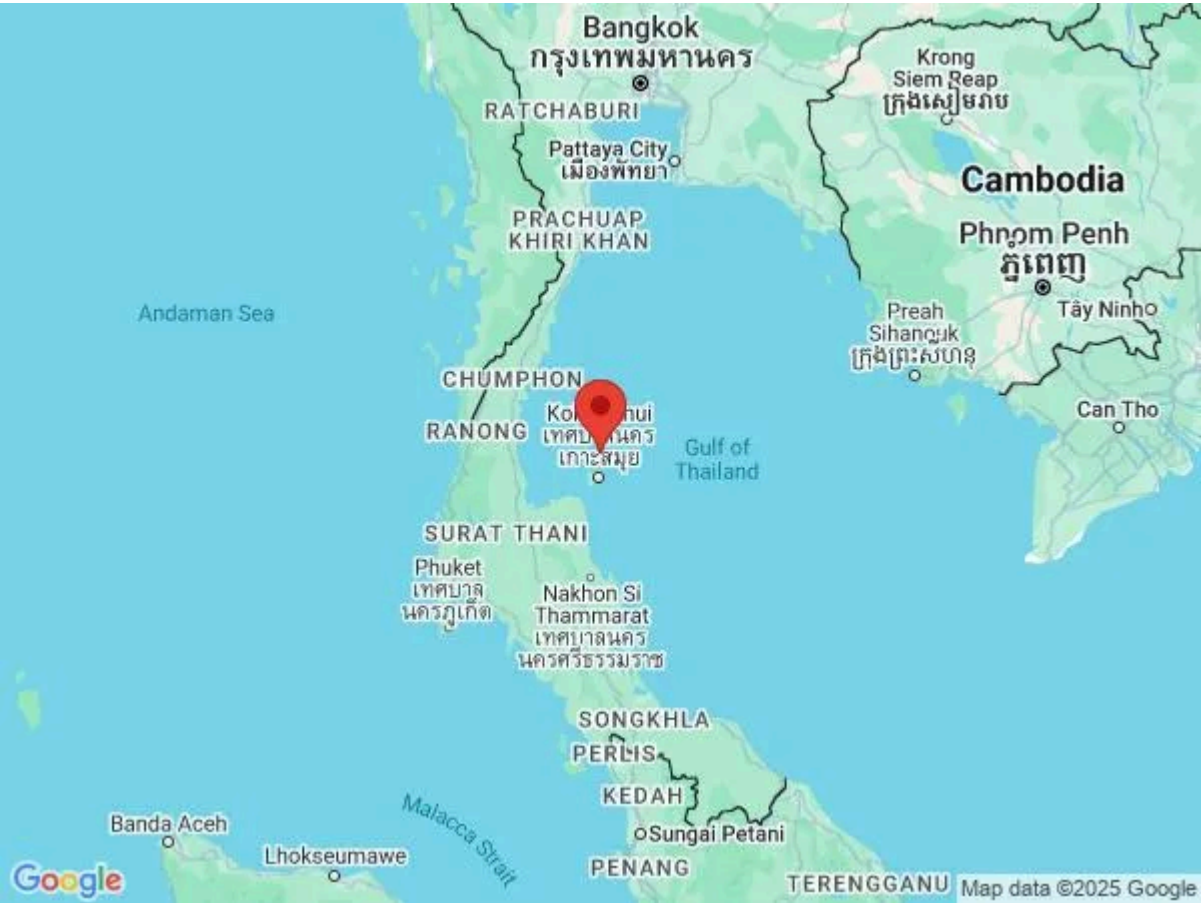
Location & Local Information

Situated on the pristine shores of Koh Phangan, Santhiya Resort & Spa offers an exquisite escape in the heart of Thailand's tropical paradise. This breathtaking resort is nestled amidst lush, verdant hills and overlooks the crystal-clear waters of the Gulf of Thailand. The serene beaches, with their powdery white sand and swaying palm trees, create a postcard-perfect setting that invites relaxation and adventure alike. As you explore the island, you'll find hidden coves, vibrant coral reefs, and enchanting waterfalls, making every moment a discovery of natural beauty.

Santhiya Koh Phangan Resort & Spa seamlessly blends into its stunning natural surroundings, offering guests an immersive experience in this idyllic location. The resort's strategic hillside placement provides panoramic views of the ocean, allowing you to bask in spectacular sunrises and sunsets from the comfort of your villa. The area is rich in cultural heritage, with nearby temples and local markets offering a glimpse into the island's vibrant traditions. Whether you're seeking tranquillity or adventure, Santhiya Koh Phangan is the perfect gateway to the enchanting wonders of Thailand.

Local Amenities

Nearest Airport	Ko Samui Airport (129 km (via ferry))
Nearest Ferry Port	Koh Pha Ngan (19 km)
Nearest Village	Panburi Village (650 m)
Nearest Town/City	Koh Pha Ngan City (19 km)
Nearest Restaurant	Chantara Restaurant (100 m)
Nearest Supermarket	Chompoo Minimart (1 km)



Nearest Beach	Thong Nai Pan Noi Beach (450 m)
---------------	------------------------------------

What we love

- Our 'By the Sea' restaurant is a fabulous beachfront bar where you can relax, enjoy our signature drinks and soak up the ambience of this magnificent setting!
- Our onsite Santhiya Fitness Center offers a range of professional equipment to keep you motivated, in shape and feeling your best!
- This is a sublime setting for a memorable wedding celebration, with a team of dedicated wedding planners, cascading poolside waterfalls and world-class service
- Fine-dining can be enjoyed across the resort and countless nearby restaurants each serving a range of delicious international and Thai cuisine for your enjoyment!

What you should know...

- Please note that published rates are only valid for the current year. Any bookings for subsequent years will be on request only and correct rates will be confirmed at the time of booking
- Due to the fabulously well-connected location, some noise from the nearby villas and beaches may be audible
- A small charge for extra guests is required for bookings of more than 2 people

Terms & Conditions

- **Security deposit:** Credit card details are required 2 weeks prior to departure for pre-authorisation.
- **Arrival time:** 3 pm
- **Departure time:** 11.30 am
- **Energy costs included?:** Yes, included in the rental price.
- **Linen & towels included?:** Yes, included in rental price.
- **Pets welcome?:** Not allowed.
- **Other Ts and Cs:** There is a mandatory dinner charge for the 31st December, New Year Eve Gala Dinner, 3,000 THB adult & 1,500 THB child.
- **Changeover day:** Flexible.
- **End of stay cleaning available?:** Yes. However, guests are required to leave the accommodation clean, tidy and in the same condition as on their arrival. Any extra cleaning, laundry, maintenance and/or rubbish disposal required will be charged against the security deposit.
- **Smoking Allowed?:** Smoking & Vaping are not permitted.
- **Minimum stay:** 2 nights. All other durations on request.
- **Heating costs included?:** Yes, included in the rental price.
- **Pool heating charge?:** Not available on this property.
- **Tax:** Government tax and service charge included in the rental price.
- **Internet access?:** Wi-Fi internet access included.
- **Pool towels included?:** Yes, included in the rental price.