

Mae Nam Suite

Region: Bangkok **Sleeps:** 3

Overview

Step into a world of serenity at the Mae Nam Suite, where modern comfort meets breathtaking coastal vistas. This beautifully appointed suite features a spacious layout with elegant furnishings and large windows. Relax in the plush king-size bed, unwind in the cosy sitting area, or sip your morning coffee on the private balcony, all while soaking in panoramic views of the garden.

Indulge in the resort's array of amenities, including a stunning infinity pool, serene spa services, and easy access to the city centre. Enjoy leisurely strolls along the river or engage in exciting water sports. At The Siam, every moment is an opportunity to create cherished memories. Whether you seek adventure or relaxation, this suite is your gateway to an unforgettable getaway.

Facilities

Maid Service Included • Special Offer • Has Discount • Wow Factor • Walk to Village • Romantic • Air-Con • Wi-Fi/Internet • Resort Villa • Cooking Classes Available • Yoga Classes Available • Spa Treatments Available • Wine-Tasting Available • Transfers Available • On-Site Concierge • Breakfast Included • Butler Available • Meal delivery service • Ideal for Babies & Toddlers • Walk to Restaurant • <1hr to Airport • Safety Deposit Box • Hairdryer • All Bedrooms En-Suite • TV • Outstanding Landscapes • Outdoor Pursuit & Activities • Tourist Towns & Villages • Historical Sites



Interior & Grounds

Interiors

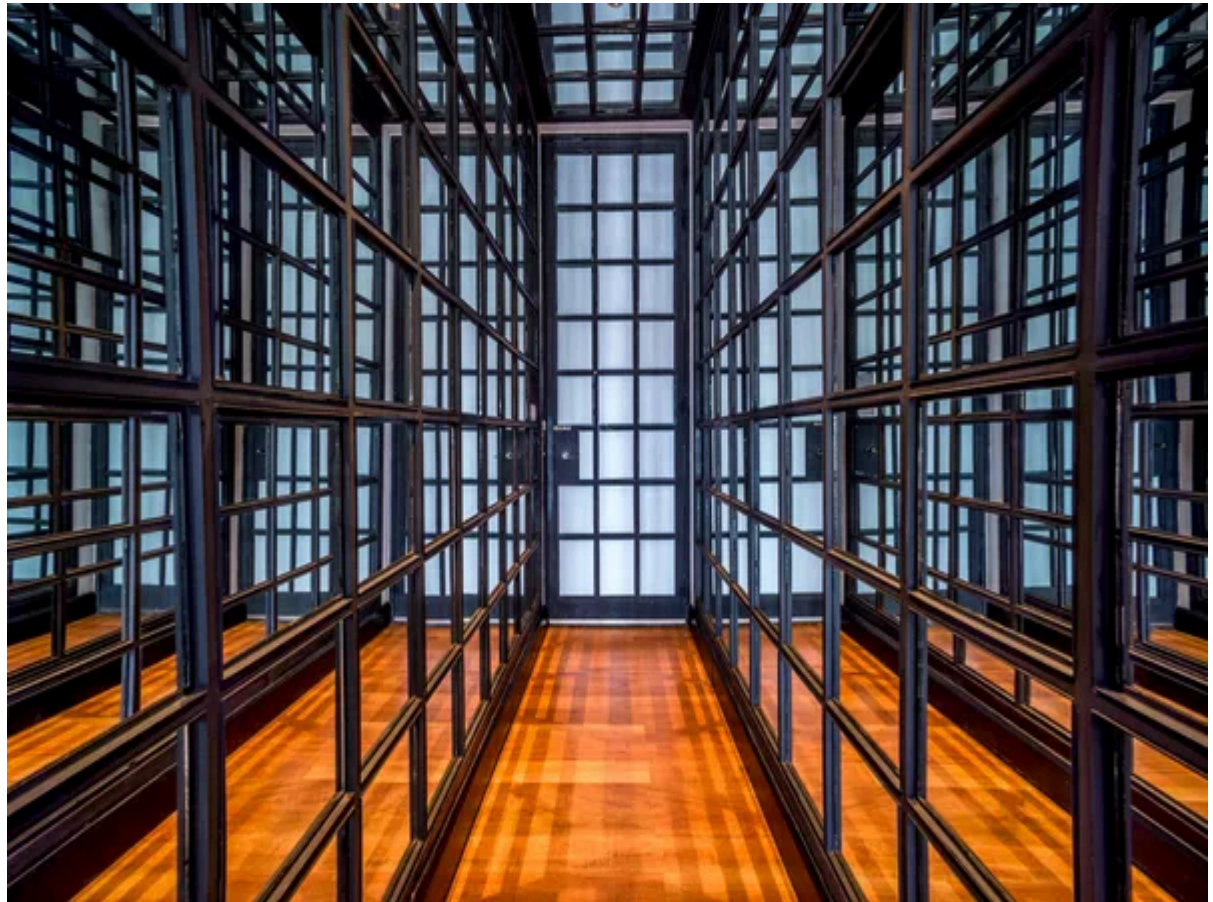
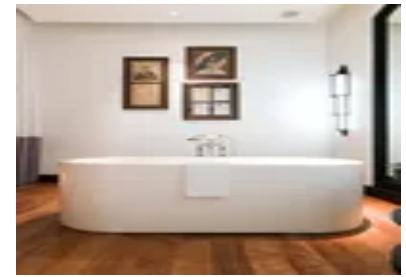
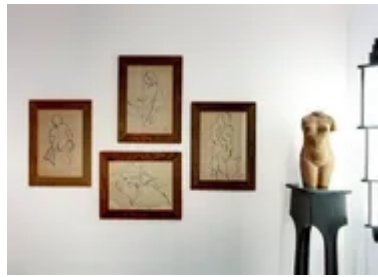
- Double bedroom with king-size bed
- Bathroom with bathtub and walk-in shower
- Day bed and sofa

Exterior Resort Facilities

- Riverside infinity pool
- Sun loungers & parasols
- Dining & sitting area

Additional Facilities

- Daily breakfast for two at restaurant
- Complimentary minibar (snacks & non-alcoholic beverages; replenished daily)
- Personal butler service
- Complimentary WiFi property wide
- Daily fresh tropical fruit
- Shuttle boat between the hotel and Bangkok's central Sathorn pier



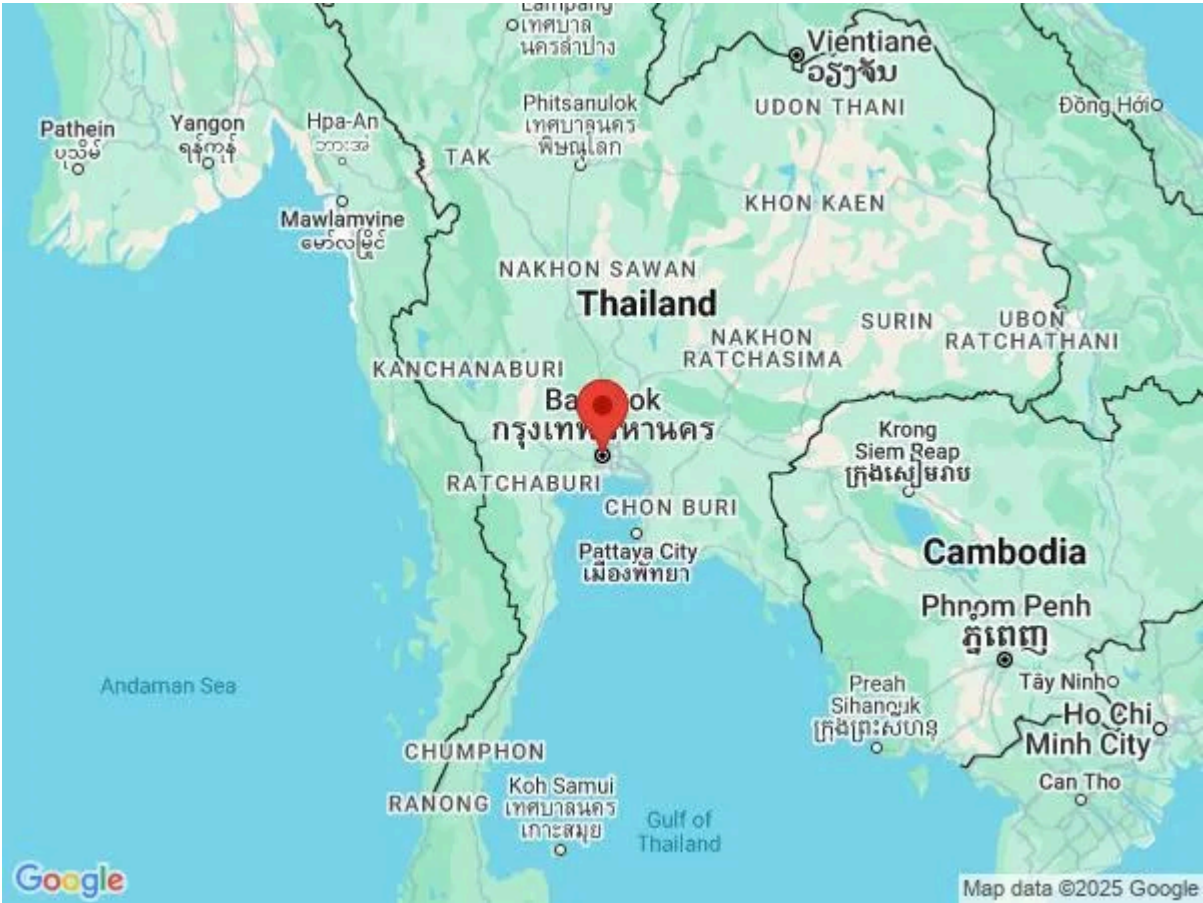
Location & Local Information

The Siam resort is nestled in the tranquil and historic Dusit district of Bangkok, Thailand, along the picturesque Chao Phraya River. This unique location offers a serene escape from the fast-paced energy of central Bangkok while still being within easy reach of the city's key attractions. Dusit is known for its regal charm, featuring grand palaces like the Vimanmek Mansion, traditional temples such as Wat Benchamabophit (the Marble Temple), and lush, expansive parks like Dusit Zoo and Suan Amporn.

The area exudes a sense of old-world elegance, with its tree-lined avenues and proximity to some of Bangkok's most notable cultural landmarks, including the Ananta Samakhom Throne Hall. Despite its peaceful vibe, Dusit remains well-connected, with the rest of the city just a short boat ride or drive away, allowing guests at The Siam to enjoy the perfect balance between riverside relaxation and Bangkok's dynamic urban life.

Local Amenities

Nearest Airport	Suvarnabhumi Airport (31 km)
Nearest Train Station	Sung Hi Junction (700 m)
Nearest Village	Dusit District (500 m)
Nearest Town/City	Bangkok City (4 km)
Nearest Restaurant	Deco Bar & Bristo (220 m)
Nearest Bar/Pub	Kuakarun Bar (130 m)
Nearest Supermarket	7-Eleven (850 m)
Nearest Golf	Prachachuen Golf Driving Range (15 km)



Nearest Tennis	Noah Asia (16 km)
----------------	----------------------

What we love

- Elegantly designed villa boasting river views and cosy settings!
- Its location along the river allows for excellent transport services for both entertaining and necessary requirements!
- Complimentary Butler service as well as a range of things to eat, drink and do at the resort!

What you should know...

- The villa is located in The Siam Hotel resort
- Mae Nam Suite may not be suitable for groups of more than 3
- The Siam Hotel offers extra services for a fee. Please check details

Terms & Conditions

- **Security deposit:** Credit card details are required 2 weeks prior to departure for pre-authorisation.
- **Arrival time:** 2 pm
- **Departure time:** 12 pm
- **Energy costs included?:** Yes, included in the rental price.
- **Linen & towels included?:** Yes, included in rental price.
- **Pets welcome?:** Not allowed.
- **Changeover day:** Flexible.
- **End of stay cleaning available?:** Yes. However, guests are required to leave the accommodation clean, tidy and in the same condition as on their arrival. Any extra cleaning, laundry, maintenance and/or rubbish disposal required will be charged against the security deposit.
- **Smoking Allowed?:** Smoking & Vaping are not permitted.
- **Minimum stay:** 2 - 3 nights, depending of season. All other durations on request.
- **Heating costs included?:** Yes, included in the rental price.
- **Pool heating charge?:** Not available on this property.
- **Tax:** Government tax and service charge included in the rental price.
- **Internet access?:** Wi-Fi internet access included.
- **Pool towels included?:** Yes, included in the rental price.