

Casa Tabua

Region: Calheta Sleeps: 6

Overview

Enviably located on Madeira's south coast overlooking Ponta do Sol, this stunning three-bedroom villa has been created with precision and flair.

Distributed over three floors, the rooms are a mix of grand, contemporary and intimate with each space showcasing the work of world-renown interior designer Nini Andrade. On the lower ground floor you'll find a unique, light-filled room featuring an indoor swimming pool and small gym. Get in some laps or burn off energy then afterwards relax on the wonderfully inviting balcony and soak up the endless ocean views from the sun lounger. There's also a separate lounge area on this lower level, decked out in funky furniture, TV and large dining table. It's the perfect chill-out area for children, workspace or room for casual entertaining. For more sophisticated entertaining, head upstairs to the gorgeous ground floor space decorated in sumptuous fashion.

Rich interiors include chandeliers, mirrored walls and high-quality furnishings while cream and clear blue tones create a relaxed ambience. Dine in marvellous style at the glass-topped table, with seating for eight people, then retire to the comfy sofa and admire the show-stopping sea views. The open-plan living area leads through to a sleek kitchen fully equipped with high-quality fittings and a neat breakfast table. A majestic terrace can be accessed from both the lounge and kitchen and offers up far-reaching ocean views. It's the perfect spot for an alfresco meal, morning coffee or just take it easy here and listen to the rise and fall of the waves.

The villa's relaxed elegance extends upstairs to the three bedrooms and three pristine bathrooms with showers. The bedrooms feature two double beds and two single beds and all are awash with natural light, framed prints on the



wall and splashes of cheerful colour. There is also plenty of wardrobe space. But best of all you can relax and gaze at the tantalising blue ocean from the comfort of your bed or throw open the balcony doors and feel the sun on your face.

Casa Tabua is located in a quiet residential area. While it offers plenty of peace and privacy there are some charming restaurants and bars nearby plus a handy supermarket. Praia da Ponta do Sol, a pretty pebble beach, is only a 5-minute drive away.

Facilities

Walk to Village • Laptop Friendly Workspace • Great Value • Tennis Nearby • Watersports • Waterfront • Wi-Fi/Internet • Cots (Cribs) • Private Pool • Beach Nearby • Seafront • Instagrammable • Modern • Heated Pool • Indoor Pool • Ideal for Kids • Ideal for Teens • Walk to Restaurant • <1hr to Airport • Hairdryer • Satellite TV • Home Cinema • Heating • High Chair(s) • Fenced Grounds • Sailing • Canoeing/Kayaking • Walking/Hiking Paths • Wine Tasting • Outstanding Landscapes • Outdoor Pursuit & Activities • Tourist Towns & Villages

Interior & Grounds

The Villa

Enviably located on Madeira's south coast overlooking Ponta do Sol, this stunning three-bedroom villa has been created with precision and flair. Distributed over three floors, the rooms are a mix of grand, contemporary and intimate with each space showcasing the work of world-renown interior designer Nini Andrade.

Lower Ground Floor

- Indoor private heated swimming pool (extra cost, see T&Cs)
- Well equipped gym area with access to a terrace
- Large living area with comfortable sofas and satellite TV
- Well equipped small second kitchen
- Office room with working desk
- Open plan dining area for 10 people
- Small reading area
- Shower room

Ground Floor

- Large living room with modern and comfortable sofas, reading area, satellite TV and access to a furnished terrace
- Second living area with comfortable sofas, reading area and access to a furnished terrace
- Fully equipped kitchen with central island, dining area for 4 people, access to a terrace, refrigerator, microwave, oven, freezer, dishwasher, dishes/cutlery, kitchen utensils, coffee machine and toaster
- Open plan dining area for 7 people
- Guest toilet

First Floor

- Master bedroom with double bed, dressing area, access to a balcony and en-suite shower room
- Bedroom with two single beds and access to a balcony
- Bedroom with double bed
- Shower room

Exterior Grounds

- Large terraced area
- Covered terrace
- Outdoor dining
- Various sun loungers
- Barbecue
- Garage

Additional Facilities

- Wi-Fi connection
- Flat Screen TV
- Cot Available
- High chair available
- Washing machine
- Tumble dryer
- Hair dryer



Location & Local Information

Casa Tabua is located in a quiet residential neighbourhood in Ponta do Sol and is set against a backdrop of banana plantations and mountains rolling into the sea. Meaning 'sun point' Ponta do Sol is famed for having the best climate in Madeira and offers numerous levada walking trails, observation decks and several surfing beaches. The charming village itself is just a 20-minute walk from the villa (or 3-minute drive) and has plenty to offer with attractive restaurants, bars and shops.

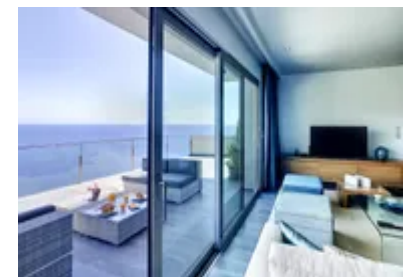
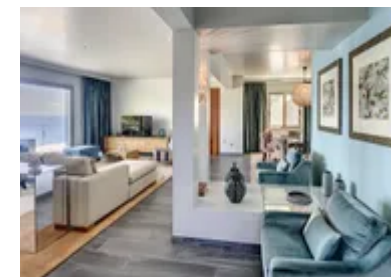
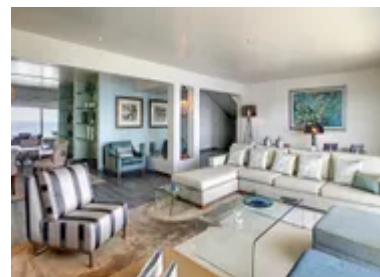
For a day at the beach, head to Praia da Ponta do Sol. Hidden away in a small cove it's less than a 5-minute drive from the villa and is a peaceful place for a swim. Its calm waters also make it ideal for the whole family. Afterwards, you can enjoy a leisurely lunch or drink at one of the many restaurants or bars.

From Ponta do Sol it's a leisurely 15-minute walk up the hillside to Zino's Palace. This charming pink building was once the summer residence of the noble Zino family and remains an example of Madeira's historic architecture. Stop for a delicious meal at the elegant restaurant or simply order a drink on the terrace and soak up the romantic views.

West from Ponta do Sol you'll find more natural beauty at Cascata dos Anjos, a waterfall cascading off a cliff and raining onto the coastal road below. It's less than a 10-minute drive from the villa and you can drive through it (make sure your windows are up!) or park the car and walk through the refreshing water.

The small resort town of Ribeira Brava is also worth a visit. Just a 15-minute drive away, it has a small pebble beach, fishing harbour and pretty square overlooked by a 16th Century church. To learn more about Madeiran culture and history be sure to stop at the local Museu Etnografico da Madeira.

For further historic attractions and museums head to Madeira's capital, Funchal. Filled with beautiful buildings and narrow cobbled streets there's plenty to see but be



sure to stop at the Design Centre where you can learn more about the work of Casa Tabua's interior designer Nini Andrade Silva. This beautifully curated space showcases the designs of this talented Funchal-born artist. Nini Andrade Silva has been awarded many awards for her designs and interiors and you'll soon see why her work has graced the pages of international glossy magazines. Once you've explored the exhibition, head to the restaurant or café for dinner or drinks and views across the harbour.

Local Amenities

Nearest Airport	Madeira Airport (41 km)
Nearest Ferry Port	Porto Santo Ferry Port (24 km)
Nearest Village	Ponta do Sol (500 m)
Nearest Town/City	Calheta (10 km)
Nearest Restaurant	Pizzeria Sol Doce (1 km)
Nearest Bar/Pub	Venda do Roto (800 m)
Nearest Supermarket	Amanhecer Supermercado (1 km)
Nearest Beach	Ponta do Sol Beach (2 km)
Nearest Golf	Palheiro Golf Course (30 km)
Nearest Tennis	Ponta do Sol Tennis Club (1 km)

What we love

- Wonderfully modern in design, the villa offers uninterrupted ocean views from almost every room
- A bright open-plan living area boasts a majestic terrace and sumptuous designs by world-renowned interior designer Nini Andrade Silva
- The fantastic leisure room features a unique indoor swimming pool, small gym and sea-facing balcony
- The light and spacious bedrooms all offer superb ocean views and balcony access

What you should know...

- There is plenty of outdoor space, with balconies and terraces on every floor but there is no garden area
- The swimming pool is located indoors on the lower ground floor
- There are three spacious bathrooms with showers but no bath

Terms & Conditions

- **Security deposit:** Credit card details might be ask as guarantee.
- **Arrival time:** Between 4 - 10 pm, late arrival between 22h - 00h will have a penatly charge of €20, after 00h there will be a penalty charge of €40, to be paid in cash on arrival.
- **Departure time:** 10 am
- **Energy costs included?:** Yes, included in the rental price.
- **Linen & towels included?:** Bed linen, bath and pool towels are included in the rental price.
- **Pets welcome?:** Not allowed.
- **Changeover day:** Flexible.
- **End of stay cleaning available?:** Not included in the rental price, extra €140, to be paid with the balance to OT. However, guests are required to leave the accommodation clean, tidy and in the same condition as on their arrival. Any extra cleaning, laundry, maintenance and/or garbage disposal required will be charged against the security deposit.
- **Smoking Allowed?:** Not permitted.
- **Minimum stay:** 5 nights
- **Heating costs included?:** Yes, included in the rental price.
- **Pool heating charge?:** For those who require pool heating, there will be an additional charge of €45 per night; a minimum of 5 days is required (to be paid with the balance to OT). Please note that like all heated pools, pool heating and water temperature are reliant on weather and outside temperatures.
- **Tax:** Tourist Tax included in the rental price.
- **Internet access?:** Wi-Fi internet access included in rental price.