

Chateau Deux Lacs

Region: Aquitaine Sleeps: 18

Overview

Close to the Forêt de Chabrières in the beautiful region of Limousin, an hour north of Limoges, Château Deux Lacs is a stunning early 18th-century home which has been lovingly restored with sensitivity and style, set in 55 hectares of glorious parkland featuring two lakes and an abundance of wildlife.

The welcoming owners first fell in love with the château when visiting family in France in 2018 – since then they have spent three years transforming it from its dilapidated state to the charming holiday home it is today. After so much hard work, they have successfully returned the château to its majestic past whilst adding personal touches and contemporary style. We especially love the spacious lounge with wonderful views across the grounds, the superbly equipped kitchen and the movie room with vintage cinema chairs from the 1920s with the most exquisite velvet peacock fabric.

Across the eight gorgeous en suite bedrooms, one of which is a two-bedroom suite, admire the perfect blend of traditional, vintage and modern furnishings alongside colourful fabrics and striking *objets d'art* from across the globe. Sleeping up to 18 guests, there is ample room across its three floors, not to mention the many hectares of magnificent grounds.

Spend time in the courtyard with its romantic pavilion which can be transformed into an exceptional wedding reception space alongside the outdoor events barn. Splash around in the heated swimming pool, play badminton, basketball or football, then dine al-fresco by the thousand-year old oak tree, beautifully lit up with fairy lights.

Head out across the estate with its meadows, woodland



and two lakes, either by foot or on mountain bike, always looking out for deer, foxes, kestrels, falcons, woodpeckers and the resident owl. Discover the largest lake, a picture-perfect spot for wild swimming.

Facilities

Rural Location • Weddings • Laptop Friendly Workspace • Chateaux & Castles • Pool/Snooker • Table Tennis • Tennis Nearby • Watersports • Romantic • Indoor Games • Cots (Cribs) • DVD • Private Pool • Games Room • Wi-Fi/Internet • Outdoor Ceremony • Instagrammable • Flexible Catering Options • Heritage Collection • Allow External Caterers • No Corkage • Indoor Reception Available • Nearby Church/Chapel • Climbing • Kid-friendly museum • Kid-friendly excursions • Water excursions/Boat trips • Pre-Stocked Fridge Available • Forest park/High-rope course • Catering Available • Board games • Pool Safety Feature • Heated Pool • Mountain bikes • Badminton • Ideal for Babies & Toddlers • Ideal for Kids • Soccer • Basketball net • Ideal for Teens • <1hr to Airport • Washing Machine • Tumble Dryer • Dishwasher • Coffee Machine • Hairdryer • All Bedrooms En-Suite • TV • Table Football • Home Cinema • Working Fireplace/Woodburner • Heating • Caretaker/Owner on Site • High Chair(s) • Fenced Grounds • Parking Space • Sailing • Canoeing/Kayaking • Walking/Hiking Paths • Cycling • Horse Riding • Fishing • Outstanding Landscapes • Outdoor Pursuit & Activities • Tourist Towns & Villages • Historical Sites • Paragliding

Interior & Grounds

Château Interiors

Ground Floor

- Living room with wood burner, piano and doors opening up to garden
- Dining room (for up to 18 guests)
- Kitchen, fully-equipped including range cooker, 2 x fridge-freezers, dishwasher, wine cooler, microwave, coffee maker, blender, food mixer, wood burner and island for up to 6 guests
- Cinema room with 75 inch TV, Blu-ray DVD player and DVDs and vintage cinema chairs (x14)
- Laundry room
- WC

First Floor

- Bedroom 1 with king-size double bed and bathroom with shower
- Bedroom 2 with double bed and bathroom with bath and shower
- Bedroom 3 with king-size bed and bathroom with bath and shower
- Bedroom 4 with king-size four poster bed and bathroom with bath and overhead shower

Second Floor

- Bedroom 5 with king-size four poster bed and bathroom with bath and shower
- Bedroom 6 with two twin beds and bathroom with shower
- Bedroom 7, 2-bedroom family suite: bedroom with king-size bed, bedroom with two cabin beds and bathroom with large shower
- Bedroom 8 with double bed and bathroom with bath and shower

Outdoor Events Barn available for weddings and celebrations (on request, subject to an additional fee)

Outside Grounds

- Heated swimming pool (9.5x4.8m, depth: 1.2m) with locked safety gate at entrance of pool area. Open approximately May to September
- Pergola for al-fresco dining for up to 18 guests
- Courtyard
- Pavilion
- Large freshwater lake (canoe and paddleboard friendly)
- Second freshwater lake
- Vast fenced grounds (55 hectares of woodland, meadows, wildlife)
- Old Roman walkway
- Basketball net
- Badminton



Location & Local Information

Château Deux Lacs is located in the French region of Limousin, in the department of Creuse, around an hour north-east of the city of Limoges and its airport. The château is set in 55 hectares of vast grounds with meadows, woodlands and two lakes, the largest a picturesque spot for wild swimming.

Use the château's bikes to explore the trails and French countryside beyond, looking out for the estate's family of deer, foxes and many squirrels or follow the old Roman road on foot and perhaps you will catch a glimpse of cuckoos, woodpeckers, kestrels or falcons as well as the resident owl. Despite this rural idyll, a small village is only 3km away with a restaurant-bar, bakery, pharmacy, doctors and small grocery store. It's around a 5-minute drive or you could walk through the parkland, past the lake, and reach the village in around a 15-minute country walk.

There are larger supermarkets and a great range of restaurants in the town of Guéret, 8km by car. Visit the twice-weekly market on a Thursday and Saturday morning selling wonderful local produce from the Creuse region. Highlights of the town also include the fascinating Museum of Art and Archaeology whilst just outside Guéret is the Base de Loisirs de Courtille with supervised swimming as well as various watersports, all taking place from early July to the end of August. You will also find a useful train station in Guéret with departures to Limoges or Montluçon, both about an hour away.

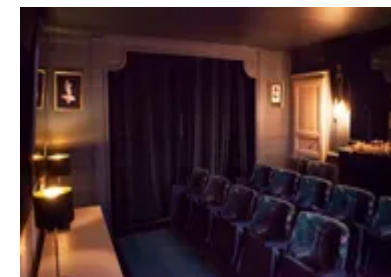
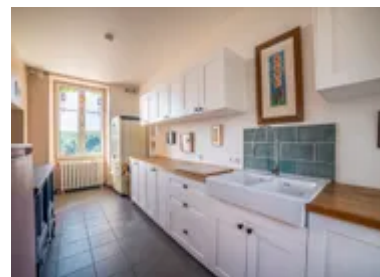
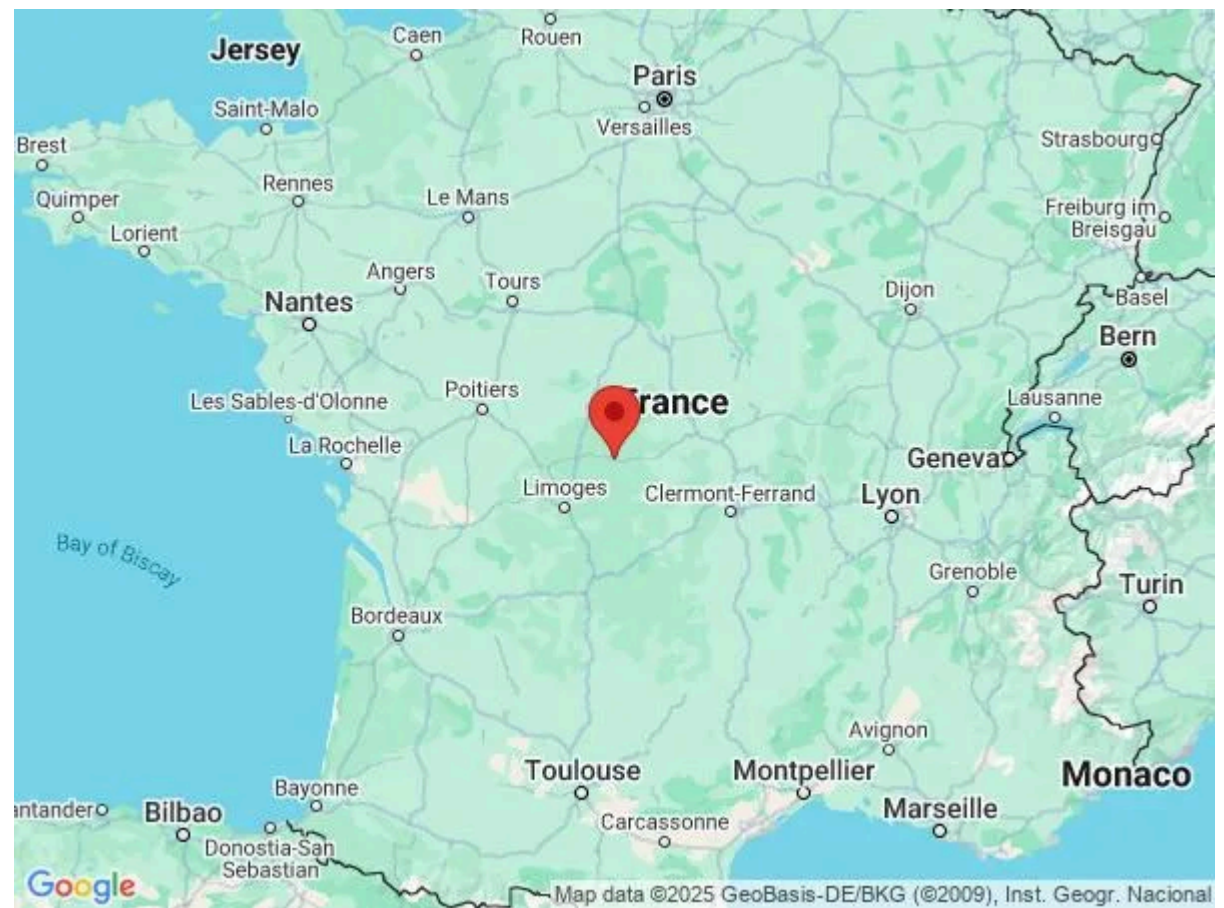
Keen nature lovers will adore the château's close proximity to the Forêt de Chabrières in Les Monts de Guéret, around a 20-minute drive away, with its hiking and mountain biking trails, giant maze and the much-loved wolf park (Les Loups de Chabrières) where you can see grey wolves living in natural surroundings in huge enclosures, alongside other animals.

The town of La Souterraine (33km) is especially beautiful in the summer with its flower-filled main square and the 11th century Église Notre-Dame. Visit on a Thursday or Saturday morning for market day and soak up the ambience of this traditional French town. Perhaps also combine with a visit to Etang Du Cheix with its sandy beach and supervised swimming in the height of the summer.

Another fantastic place for water-based activities is Lac Vassivière, one of France's largest man-made lakes, around an hour south of the château. As well as canoeing, wind-surfing, stand-up paddle boarding, swimming and fishing, there are various beautiful beaches, horse-riding, cycling and some incredible hiking opportunities. Boat taxis take you from one part of the lake to another and there is a 30km long trail that follows the shoreline of part of this vast lake.

Of course, the Creuse department also offers many picturesque villages and towns worth exploring such as historic Chénérailles (35km) near the impressive Château de Villemonteix, Boussac (45km) and its castle as well as Aubusson (55km), famous for its fine tapestries and rugs dating as far back as the 15th century.

Not to mention the lovely city of Limoges, around an hour away, with its grand cathedral and town hall, charming historic quarter, Musée des Beaux-Arts, atmospheric covered market and pretty shops selling locally-made porcelain.



Local Amenities

Nearest Airport	Limoges (90km)
Nearest Airport 2	Clermont-Ferrand (154km)
Nearest Village	Small village (3km)
Nearest Shop	Grocery store and bakery in local village (3km)
Nearest Restaurant	Pizza restaurant/bar (3km)
Nearest Supermarket	Guéret (8km)
Nearest Town	Guéret (8km)
Nearest Golf	Golf Des Dryades (48km)
Nearest City	Limoges (80km)
Nearest Train Station	Guéret (8km)

What we love

- With 55 hectares of idyllic grounds, there are century-old trees, two lakes, meadows, woodland and so much wildlife to explore
- Inside, the movie room is a great way to get everyone in one room, with its 1920s vintage cinema chairs
- Families will also love the many games, heated swimming pool and mountain bikes on request
- Such a wonderful venue for a stylish yet relaxed French country wedding with a barn and pavilion that can be beautifully transformed into event spaces
- The Chabrières forest is just a 10-minute drive away with its incredible scenery, hikes and mountain biking trails, wolf park and giant labyrinth
- Visit one of the many lakes and étangs across the Limousin region, with sandy beaches and summer watersports, including the magnificent Lac de Vassivière

What you should know...

- There are eight bedrooms but one of them is a two-bedroom family suite so the château comfortably sleeps up to 18 guests.
- The vast grounds feature two lakes and a natural spring alongside 55 hectares of meadows and woodland - of course, children will need to be supervised.
- The estate manager and three lovely dogs live in a farmhouse set on the estate but with their own garden, far enough away not to intrude but close enough if you need any advice.

Terms & Conditions

- **Security deposit:** €5000 (or GBP equivalent) paid via bank transfer to the owner one month before arrival and refunded two weeks after departure, subject to full inspection.
- **Arrival time:** 4.00 p.m.
- **Departure time:** 10.00 a.m.
- **Energy costs included?:** Yes.
- **Linen & towels included?:** Yes.
- **Pets welcome?:** Small dogs on request only and with prior agreement with the owner. If accepted, a charge of €300 for deep cleaning will apply.
- **Other Ts and Cs:** Weddings and any special events are on request only and subject to prior arrangement with the owner and additional charges. Stag/hen parties are not permitted. The estate manager and three lovely dogs live in a farmhouse set on the estate but with their own garden, far enough away not to intrude but close enough if you need any advice.
- **Changeover day:** Flexible.
- **End of stay cleaning available?:** Yes, standard changeover clean included. Guests are required to leave the accommodation clean, tidy and in the same condition as on their arrival. Any extra cleaning, laundry, maintenance and/or rubbish disposal required will be charged against the security deposit.
- **Smoking Allowed?:** Outside only.
- **Minimum stay:** 7 nights.
- **Heating costs included?:** Yes.
- **Pool heating charge?:** Included. Please note that like all heated pools, pool heating and water temperature are reliant on weather and outside temperatures.
- **Internet access?:** Wi-Fi internet access included.
- **Pool towels included?:** Yes.
- **Pool opening dates?:** The pool is open approximately May to September. Please note that pool opening dates are subject to local weather conditions and pool maintenance requirements and that cooler months may not be suitable for swimming.