

# Michelangelo Cottage

Region: Florence    Sleeps: 2

---

## Overview

Set between Piazzale Michelangelo and Giardino di Boboli, Michelangelo Cottage is a true gem close to the heart of Florence, perfect for a couple's getaway. After a day out exploring the city's artistic treasures, imagine returning to your stylish home, dining al-fresco beneath the gazebo then relaxing in the garden's hot tub.

It's set just off a famous tree-lined road that was designed by an architect in the late 19th century to make the most of the panoramic views of Florence below – the cottage was originally a stable to house the guards' horses. Nowadays it's a beautiful residential area with the most glorious views as you wander along the *viale* as far as Piazzale Michelangelo (only 1.5km away) and beyond.

The cottage interiors are just as delightful – step inside and appreciate the bright décor, exquisite floor tiles and retro vibe. Only the best appliances can be found in the kitchen whilst chic furnishings help to create an elegant yet relaxed ambience. Behind sliding doors find the double bedroom whilst guests also benefit from air-conditioning and heating as well as two contemporary shower rooms.

How wonderful to have your own walled garden too, surrounded by towering trees and with such an attractive covered terrace for al-fresco dining and lounging. Furthermore, there's the luxury of a hot tub set amongst the plants and flowers.

The heart of downtown Florence isn't far, a short drive or bus ride away whilst keen walkers may prefer to stroll to the city centre. Spend hours strolling around this magnificent Italian city, come across il Duomo, the Giotto belltower, Basilica of Santa Croce and the Uffizi Gallery or get lost in hidden lanes looking out for markets, boutiques, *osterie* and atmospheric wine bars. It feels like every



corner of Florence will take your breath away with its Renaissance beauty and charm.

Of course, you can also drive out to the Tuscan countryside with its enchanting landscapes, idyllic hilltop villages and endless Chianti vineyards. Then again you could simply hop on a train and spend a fantastic day in Lucca, Siena or even Rome for the most exceptional of Italian experiences during your time at Michelangelo Cottage.

## Facilities

Ground Floor Bed & Bath • Tennis Nearby • Historical Sites • Horse Riding • Walking/Hiking Paths • Romantic • Cycling • Hairdryer • Coffee Machine • Washing Machine • Wine Tasting • Air-Con • Golf Nearby • Wi-Fi/Internet • Chef/Cook Available • Cots (Cribs) • Bicycles Provided • Easy By Train • Hot Tub • Walk to Restaurant • <1hr to Airport • Dishwasher • Safety Deposit Box • Smart TV • Heating • High Chair(s) • Fenced Grounds • Outstanding Landscapes • Outdoor Pursuit & Activities • Tourist Towns & Villages

# Interior & Grounds

Property Licence Number: 048017LTI6667

## Cottage Interiors (70m2)

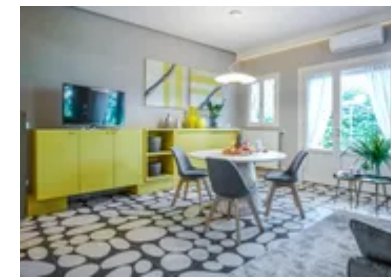
- Open-plan living-dining area
- Small kitchen area (via sliding doors), well-equipped including oven, dishwasher, fridge-freezer, kettle and Nespresso machine
- Bedroom (via sliding doors) with king-size double bed and space for cot
- 2 x bathrooms with shower

## Outside Grounds (200m2)

- Outdoor hot tub (5-person) Open approximately April to September
- Gazebo with al-fresco lounge and dining area
- Barbecue
- Walled garden
- Parking (shared with owner)

## Facilities

- Wi-Fi
- Heating/air-conditioning system
- Two bikes
- Mosquito nets (windows)
- Iron





## Location & Local Information

A delightful setting backed by olive trees, in a residential district south of the city, guests at Michelangelo Cottage can reach Florence's famous Ponte Vecchio in around 2km and there is a bus stop nearby for those who prefer not to walk or drive.

The surrounding neighbourhood is charming as well as historic – the cottage is just off a road that was designed in the 18th century that eventually leads up to Piazzale Michelangelo, around 1.5km away. There are walking and jogging paths along here, passing stunning views of Florence below, then gaze out to the panoramic vistas once you reach this impressive square, much-loved by visitors from across the world. Make sure you also head up to the San Miniato al Monte church, another historic gem with amazing views.

Heading north towards the city, you can reach the city in 2 to 3km by car or bus. Alternatively, keen walkers may choose to stroll to the city centre, perhaps passing Giardino di Boboli en route. Stop off in the gardens to admire its grand layout with fountains, sculptures and steps, not to mention the incredible Palazzo Pitti. With the hilly setting, you may prefer to get a taxi back or there is a bus stop nearby with services approximately every hour until early evening.

As you approach Florence, explore its historic narrow lanes filled with boutiques, hotels and terrace cafes, then cross the romantic Ponte Vecchio where many more wonders of Florence await. There's the Basilica of Santa Croce, Palazzo Vecchio, Uffizi Gallery and of course the late 13th century Cattedrale di Santa Maria del Fiore, Il Duomo, and the Giotto belltower. Not to mention iconic museums and galleries displaying some of the finest art in the world.

Yet experiencing Florence is so much more than admiring historic sights and artistic treasures. It's also about setting off early to the bustling markets showcasing leather products and some of the best Tuscan produce, enjoying



a coffee by Piazza della Repubblica accompanied by the sounds of the vintage carousel and finding the best *aperitivi* in Florence accompanied by small snacks brought to the table – there are even tours to show you the most authentic spots. Then there’s the vibrant restaurant scene and wonderful wine bars.

Furthermore, the Tuscan hills are close enough for a superb day out visiting vineyards, olive groves and idyllic hilltop villages and historic towns such as San Gimignano, San Miniato, Volterra and Chianti villages including Greve, Radda and Castellina in Chianti.

You could even hop on a train to Pisa or Arezzo, two exceptional Tuscan cities reached in around an hour or spend the day in Lucca, Siena or Rome, all three reached by train in around 90 minutes.

Local Amenities

Nearest Airport	Florence Airport (10km)
Nearest Airport 2	Pisa Airport (83km)
Nearest Train Station	Florence Santa Maria Novella (3.5km)
Nearest City	Florence (5km)
Nearest Restaurant	(Within 1km)
Nearest Supermarket	(1km)
Nearest Golf	Circolo Golf dell'Ugolino (14km)
Nearest Beach	Around Livorno (90-100km)

## What we love

- A stylish abode just outside Florence, perfect for a couple wanting to explore the city yet return to this delightful retreat
- Relax in the outdoor hot tub and enjoy al-fresco meals beneath the gazebo
- Such a charming residential neighbourhood with the Boboli Gardens and Ponte Vecchio around 2km away
- Stroll up to Piazzale Michelangelo for unrivalled views of the city of Florence
- Hire a car for day trips to Chianti vineyards, medieval hilltop villages and idyllic Tuscan landscapes
- Great cities such as Pisa, Siena and Rome can be easily reached by train

## What you should know...

- Parking is shared with the property next door, however each house has its own entrance and garden.
- Keen walkers can stroll to Florence or there is also a bus stop close by (with services approximately every hour until early evening). In a hilly setting, a taxi home from the city could also be an option.
- Please note the outdoor jacuzzi is open approximately April to September.

# Terms & Conditions

- **Security deposit:** €500 charged to client's credit card by the owner upon arrival (or by cash to the owner) and refunded two weeks after departure (or upon departure for cash), subject to full inspection.
- **Arrival time:** 3.00 p.m.
- **Departure time:** 10.00 a.m.
- **Energy costs included?:** Yes.
- **Linen & towels included?:** Yes.
- **Pets welcome?:** Not allowed.
- **Other Ts and Cs:** Weddings, stag/hen parties and any special events are not allowed. A cot and a highchair can be requested free of charge. Please note the outdoor jacuzzi is open approximately April to September.
- **Changeover day:** Flexible.
- **End of stay cleaning available?:** Extra €150, payable locally on arrival. However, guests are required to leave the accommodation clean, tidy and in the same condition as on their arrival. Any extra cleaning, laundry, maintenance and/or rubbish disposal required will be charged against the security deposit.
- **Smoking Allowed?:** Outside only.
- **Minimum stay:** 2 nights.
- **Heating costs included?:** Yes.
- **Tax:** Italian Visitors Tax payable locally in cash (typically costs €1-€10 per adult per night- please enquire if exact amount is required).
- **Internet access?:** Wi-Fi internet access included.
- **Property Licence Number:** CIR: 048017LTl6667 - CIN: IT048017B482ESK7XN