

The Old Workshop

Region: South Wales **Sleeps:** 3

Overview

The wonderful Old Workshop is nestled on the fantastic Pontardawe Country Estate which enjoys a remarkable history, unique character and more than one hundred and twenty acres of beautiful rolling Welsh countryside. The Pontardawe Country Estate is located between the Brecon Beacons National Park and the beautiful Gower Peninsula in South Wales. The Old Workshop is a cosy countryside cottage that has been beautifully renovated to provide modern, luxurious living. It is situated alongside a mountain stream on the slopes of Mynydd Marchywel, overlooking the central courtyard of the estate and sheep grazing in parkland.

The characterful Old Workshop enjoys one bedroom with an added single bed, beautiful open plan living space, a luxurious wet room and its own outdoor space. The cottage was formally the estate carpenter's workshop. In addition to its superb grounds, the Pontardawe Estate boasts a gorgeous manor house, Pontardawe Country House, as well as a number of other holiday cottages that Oliver's Travels also feature. Guests can book each of these individually or for a special celebration, you may want to consider booking a selection of the cottages as well as the manor house.

The Old Workshop is tucked away and offers beauty, serenity and tranquility to the lucky guests that happen to book it. The Old Workshop was a former outbuilding on the estate, some of which record a history back to the early 1400's. The estate lies in the ancient hamlet of Cilybebyll with links to the descendants of Welsh Kings, Arthurian legend, tales of the Mabinogion, the Norman invasion, the Earls of Pembrokehire, Winston Churchill's secret army, eighteenth century prisons, Charles II, the tea plantations of Ceylon, coal mining, the Industrial Revolution and much more. A World War II hideout, used



by Churchill's Secret Army was found in the estate's private bluebell woodland and gained recognition as a Scheduled Ancient Monument of national importance.

The living space of The Old Workshop is very cosy and very modern. Open plan in design, it features a sleek, contemporary kitchen in one corner, perfect for your self-catering getaway, a modern, circular dining table and chairs in the middle and comfy sofas, a television and a contemporary wood burning stove at the far end. The television comes with over 150 channels for your entertainment. The generous sized bedroom is minimalist in styling, features a characterful exposed stone wall and offers both a kingsize bed and a single bed. You may decide to book this cottage for a romantic break or come with one child and perhaps a baby in a cot. The neutral walls are decorated with Welsh themed pictures and prints throughout. The cottage's bathroom is a contemporary wonder with beautiful tiling, a wet room rainforest shower and other excellent fittings. The cottage is all on one level so it is perfect for anyone with mobility issues. The contemporary wet room offers ample room for a wheelchair to turn. It is also eco-friendly, being heated with renewable energy. The Old Workshop is also pet friendly but please let us know in advance if you want to bring your furry friend. There is private parking on the courtyard alongside the cottage.

The Old Workshop comes with a pretty, private garden where you can enjoy the wildlife, relax with a glass of wine on the south facing terrace, enjoy the tranquil sounds of the mountain stream, feed the birds on the patio walls or each lunch under the chestnut tree.

You can have food delivered from the local supermarket in Pontardawe, so you do not even need to leave this idyllic corner of Wales. Guests enjoy access to the river and farm trail and enjoy woodland walks from the doorstep. It is just a fifteen minute stroll along a country lane to the village pub. It is hard to beat this secluded, peaceful location. If you do leave the estate, then the majestic Brecon Beacons and the stunning Gower Peninsula are on the doorstep.

Facilities

Wi-Fi/Internet • Ground Floor Bed & Bath • Walking/Hiking Paths • Romantic • Great Value • Cots (Cribs) • Rural Location • Modern • Cottage • Ideal for Babies & Toddlers • Pets on Request • Satellite TV • Heating • High Chair(s) • Outstanding Landscapes • Outdoor Pursuit & Activities • Tourist Towns & Villages

Interior & Grounds

Ground Floor

- Open-plan living & dining area
- Fully-equipped kitchen
- Bedroom with king-size bed and additional single bed
- Family wet room

Exterior Grounds

- Private enclosed garden
- 100 acres of Estate gardens to explore

Additional Facilities

- Wi-Fi
- TV
- Washing machine & dryer
- Travel cot & highchair available on request (*please bring your own cot linen*)
- Parking

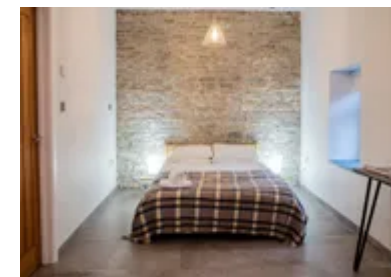


Location & Local Information

The Old Workshop is nestled quietly in the one hundred and twenty acre Pontardawe Country Estate in the tranquil hamlet of Cilybebyll, close to the village of Pontardawe. The estate is absolutely incredible with woodlands, rivers, bluebell woods, sprawling fields, bird nesting boxes, beautiful picnic spots, a stately manor house and other holiday cottages. It is the perfect rural retreat between the Gower Peninsula and the Brecon Beacons National Park. Though you may find it hard to leave this wonderful spot, there is much to do and see. The estate courtyard where many of the cottages are located is bounded by the upper reaches of the picturesque River Clydach and on the other side by green parkland pastures grazed by sheep and cows. The high hills of blue pennant sandstone provide the backdrop to an idyllic and tranquil scene. Guests booking The Old Workshop are free to roam the estate including its award winning bluebell woodland. The estate's farm walk is a circular walk for guests which meanders from the doorstep of The Old Workshop towards the summit of Mynydd Marchywel and back. En route, guests follow mountain streams, climb over stiles, explore the bluebell woodlands and traverse lazy green fields. On a clear day, the panoramic vistas include the Swansea Valley, Swansea Bay, the Bristol Channel and the Brecon Beacons National Park. The cottage is an excellent base for those that want to explore the landscapes by bike. The Afan Forest and Bike Park Wales are easily accessible.

The beautiful Swansea Bay coastline and the Gower Peninsula with its idyllic secret coves and glorious stretches of fine sand can be reached by car in twenty minutes. For those that want to enjoy nature and the great outdoors, the National Showcaves of Wales and the Vale of Neath's spectacular waterfalls are nearby. Guests enjoy visits to the Pembrokeshire Coast National Park and the Glamorganshire Heritage Coast, both less than half an hour away.

The Victorian seaside village of Mumbles with its promenade, shops and restaurants is definitely worth a visit. Mumbles was one of Dylan Thomas' many stamping



grounds and is the home of some world class ice cream. Mumbles is steeped in history with its lighthouse being built in 1794. It also boasts a Victorian pier and Oystermouth Castle which sits on the hilltop overlooking the sea. There are lovely boutique shops and galleries including the gorgeous Lovespoon Gallery and the Gower Gallery. No visit to Mumbles would be complete without sampling some 'fresh off the boat' seafood, its handmade chocolates and its fantastic ice creams.

Local Amenities

Nearest Town/City	Swansea (16.4km)
Nearest Town	Pontardawe (3.2km)
Nearest Restaurant	The Butcher's Arms, Pontardawe (2.8km)
Nearest Supermarket	Tesco Superstore, Pontardawe (3.4km)
Nearest Golf	Pontardawe Golf Club (4.9km)
Nearest Beach	Aberavon Beach (21km)

What we love

- The Old Workshop enjoys superb interior design. Guests enjoy total luxury together with delightful little nods to the cottage's past as the carpenter's workshop
- This delightful cottage is located on a private one hundred and twenty acre estate so there are delightful walks from the doorstep and many beautiful picnic spots
- The cottage is built all on one level so is ideal for guests with mobility issues. The wet room has plenty of space for a wheelchair to turn around

What you should know...

- Guests are welcome to wander through the estate, paddle in the river and enjoy picnics in the fields. You never know, you might even find Churchill's hidden World War II hideout in the bluebell woods
- Your well behaved furry friend is welcome to join you at The Old Workshop but please do let us know in advance

Terms & Conditions

- **Security deposit:** There is no security deposit, but should there be any damage or loss caused by you or your guests during your stay you will be liable for the cost.
- **Arrival time:** 4pm
- **Departure time:** 10am
- **Energy costs included?:** Yes, included in the rental price
- **Linen & towels included?:** Yes, included in the rental price
- **Pets welcome?:** A maximum of 2 well-behaved dogs are allowed on request for an additional charge of £30 per dog, per booking. To be requested at the time of booking
- **Changeover day:** Friday
- **End of stay cleaning available?:** Yes, included in the rental price
- **Smoking Allowed?:** No smoking
- **Minimum stay:** 2 nights.
- **Internet access?:** Yes, Wi-Fi included in the rental price