

# Raven Cottage

**Region:** South Wales   **Sleeps:** 6

---

## Overview

Families just love Raven Cottage. Well, who wouldn't want to be situated on a fantastic one hundred and twenty acre private estate brimming with wildlife, green fields, bluebell woods, rivers and stunning picnic spots! Raven Cottage boasts three gorgeous bedrooms and fantastic, contemporary upside down living. The cottage was once a farm shearing shed and the fabulous award winning architects Rio Architects have done a brilliant job of blending contemporary design with ancient charms.

Raven Cottage sits next to the old farmyard on the brilliant Pontardawe Country Estate in the ancient hamlet of Cilybebyll, surrounded by beautiful rolling Welsh countryside. The historic estate boasts links to the descendants of Welsh Kings, Arthurian legend, tales of the Mabinogion, the Norman invasion, the Earls of Pembrokehire, Winston Churchill's secret army, eighteenth century prisons, Charles II, the tea plantations of Ceylon, coal mining, the Industrial Revolution and much more. A World War II hideout, used by Churchill's Secret Army was found in the estate's private bluebell woodland and gained recognition as a Scheduled Ancient Monument of national importance. In addition to its superb grounds, the Pontardawe Estate boasts a gorgeous manor house, Pontardawe Country House, as well as a number of other holiday cottages that Oliver's Travels also feature. Guests can book each of these individually or for a special celebration, you may want to consider booking a selection of the cottages with or without the manor house. Guests staying at the cottages are free to roam the estate, enjoying the beautiful natural scenery and its amazing wildlife.

Sleeping six guests in luxurious comfort, the cottage boasts sumptuous furnishings throughout and a calm, neutral colour palette. The walls are decorated with



beautiful local art by prominent artists. A display coffee table is filled with centuries old artefacts and curiosities found by metal detectorists at the farm over the years. One of the highlights is an old button which features a raven which was part of an army of ravens that protected a Welsh Prince of the Dark Ages from whom previous owners of the farm claim descent. You will be enthralled with the history of this place! This story is told in the Welsh medieval Tales of the Mabinogion and depicted in an art print by famed Lord of the Rings illustrator Alan Lee which hangs in the living room of the cottage. Despite all this history, the upstairs living area offers the contemporary wow factor and offers wonderful views of the estate. With a snazzy, brilliant white kitchen offering the very best in appliances, dining for six and a large living area brimming with comfy sofas and chairs, it is a wonderful modern space. Guests enjoy sitting in the reading chair in front of the floor-to-ceiling windows enjoying the scenery as well as watching the 150 channels available on the Smart television. There is also a useful toilet on the first floor.

The beautifully finished bedrooms are downstairs with the spacious master looking out to the old farmyard. Its modern furniture is complemented by a section of exposed blue pennant sandstone wall. The comfy bed is adorned with luxury linens and beautiful soft furnishings. At the other end of the cottage you will find a beautiful twin bedroom and another twin where the beds can be put together to form a kingsize bed. Again, the rooms are beautifully finished in neutral tones and the occasional colour pop. Separating the master from these two bedrooms is a super cool family bathroom with a fabulous standalone bath with waterfall taps as well as a superb, walk-in rainfall shower. You will want to linger in this luxurious, indulgent bathroom for sure! Raven Cottage is always warm and toasty, heated by renewable biomass and insulated by sheep's wool which is wonderful considering the building's past!

Outside, the cottage enjoys its own private garden and parking area. Here you can enjoy alfresco dining in the fresh country air using the cottage's barbecue. You might even find the enchanted stone tree in one of the stone walls. If you can bare to leave this beautiful, modern

retreat then the farm trail starts right from the cottage doorstep! A short farm road also takes you along the bank of the pretty River Clyach and into the beautiful bluebell wood. Guests can have food delivered from the local supermarket in Pontardawe, so you do not even need to leave this idyllic corner of Wales.

## Facilities

Wi-Fi/Internet • Great Value • Cots (Cribs) • Rural Location • Modern • Cottage • Ideal for Babies & Toddlers • Ideal for Kids • Ideal for Teens • Ground Floor Bed & Bath • Satellite TV • Heating • High Chair(s) • Walking/Hiking Paths • Outstanding Landscapes • Outdoor Pursuit & Activities • Tourist Towns & Villages

# Interior & Grounds

## Ground Floor

- Bedroom with double bed
- Bedroom with twin beds
- Bedroom with twin beds
- Family wet room

## First Floor

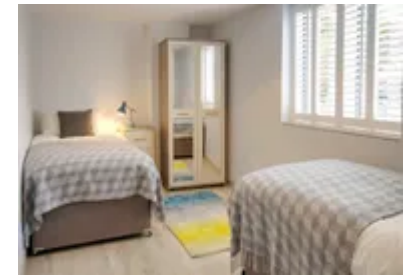
- Open-plan living area
- Fully-equipped kitchen with dining facilities
- Cloakroom

## Exterior Grounds

- Private enclosed garden
- Barbecue
- 100 acres of Estate gardens to explore

## Additional Facilities

- Wi-Fi
- TV
- Washing machine & dryer
- Travel cot & highchair available on request (*please bring your own cot linen*)
- Parking



## Location & Local Information

Raven Cottage enjoys a fabulous position on the one hundred and twenty acre Pontardawe Country Estate in the tranquil hamlet of Cilybebyll, close to the village of Pontardawe. The estate is absolutely beautiful, full of forests, rivers, bluebell woods, sprawling fields, bird nesting boxes, beautiful picnic spots, a stately manor house and other holiday cottages. It is the perfect rural retreat between the Gower Peninsula and the Brecon Beacons National Park. The estate courtyard where many of the cottages are located is bounded by the upper reaches of the picturesque River Clydach and on the other side by green parkland pastures grazed by sheep and cows. The high hills of blue pennant sandstone provide the backdrop to an idyllic and tranquil scene. Guests booking Raven Cottage are free to roam the estate including its award winning bluebell woodland. The estate's farm walk is a circular walk for guests which meanders from the doorstep of Raven Cottage towards the summit of Mynydd Marchywel and back. En route, guests follow mountain streams, climb over stiles, explore the bluebell woods and traverse lazy green fields. On a clear day, the panoramic vistas include the Swansea Valley, Swansea Bay, the Bristol Channel and the Brecon Beacons National Park. The cottage is an excellent base for those that want to explore the landscapes by bike. The Afan Forest and Bike Park Wales are easily accessible.

The beautiful Swansea Bay coastline and the Gower Peninsula with its idyllic secret coves in and glorious stretches of fine sand is just twenty minutes drive away. You should not miss a trip to the iconic, award winning Rhossili Bay with its dramatic, panoramic views and excellent hiking paths. Rhossili has been described as 'The supermodel of British beaches' by The Independent and has won numerous accolades from UK Travel Writers including the best spot for a picnic. The Times listed the beach as 'The UK's No.1 dog friendly beach' so if you do have your furry friend with you, you should definitely go. At low tide the beach is enormous and it is possible to walk across to Llangennith or even to the Worms Head. It is steep to walk down to the beach so it is not suitable for



pushchairs or visitors with mobility issues.

The Victorian seaside village of Mumbles with its promenade, shops and restaurants is worth a visit. Mumbles was one of Dylan Thomas’ many stamping grounds and is the home of some world class ice cream. Mumbles is steeped in history with its lighthouse being built in 1794. It also boasts a Victorian pier and Oystermouth Castle which sits on the hilltop overlooking the sea. There are lovely boutique shops and galleries including the gorgeous Lovespoon Gallery and the Gower Gallery. No visit to Mumbles would be complete without sampling some ‘fresh off the boat’ seafood, its handmade chocolates and its fantastic ice creams.

Other popular excursions are the National Showcaves of Wales and the Vale of Neath’s spectacular waterfalls. Guests also enjoy visits to the Pembrokeshire Coast National Park and the Glamorganshire Heritage Coast, both less than half an hour away.

Local Amenities

Nearest Town/City	Swansea (16.4km)
Nearest Town	Pontardawe (3.2km)
Nearest Restaurant	The Butcher's Arms, Pontardawe (2.8km)
Nearest Supermarket	Tesco Superstore, Pontardawe (3.4km)
Nearest Golf	Pontardawe Golf Club (4.9km)
Nearest Beach	Aberavon Beach (21km)

## What we love

- The stunning upside down Raven Cottage enjoys superb design by leading architects, Rio Architects. Guests enjoy total luxury and the added charm of ancient nods to the building's past
- This fabulous cottage is located on a private one hundred and twenty acre estate with delightful walks from the doorstep
- The cottage enjoys a fascinating history. It is always lovely to stay somewhere and imagine how it was in the past

## What you should know...

- Raven Cottage enjoys modern, upside down living with the bedrooms on the ground floor and the open plan living space upstairs
- We also feature some of the other cottages and the manor house so please speak to our Concierge Team if you are thinking of booking multiple properties on the estate



# Terms & Conditions

- **Security deposit:** There is no security deposit, but should there be any damage or loss caused by you or your guests during your stay you will be liable for the cost.
- **Arrival time:** 4pm
- **Departure time:** 10am
- **Energy costs included?:** Yes, included in the rental price
- **Linen & towels included?:** Yes, included in the rental price
- **Pets welcome?:** No pets
- **Changeover day:** Friday
- **End of stay cleaning available?:** Yes, included in the rental price
- **Smoking Allowed?:** No smoking
- **Minimum stay:** Please note that there is a 2-night minimum stay, this may be increased across peak dates
- **Internet access?:** Yes, Wi-Fi is included in the rental price