

Stream Cottage

Region: South Wales **Sleeps:** 4

Overview

Stream Cottage offers a delightful country getaway for two couples or a small family. Located on the amazing Pontardawe Country Estate with its one hundred and twenty acres of glorious Welsh countryside, it enjoys natural beauty, peace, seclusion and absolutely amazing walks from the doorstep. The cottage sits alongside a picturesque mountain stream alive with wild trout, dippers and grey wagtails and edged with bluebells, daffodils, rhododendrons and hazel trees growing wild. The river runs through the estate on its way to Swansea Bay. The views from the back door of the cottage are of the stream, a pretty bridge, weeping ash, flowering rhododendron and traditional farmyard buildings.

The cottage is dog friendly so you can take your well-behaved furry friend along to enjoy this special place. Stream Cottage is bright and airy yet cosy and very comforting. There are some lovely images in the cottage that show you how the cottage was many moons ago. The white archway and circle that adorn the cottage are telling signs to its past life as a nineteenth century coach house. You can feel the history in this lovely cottage. The living room is very cosy with two comfy sofas, a television, an electric stove and a delightful warm colour palette. It is a wonderful room to nestle down in, enjoy your holiday book or peruse the excellent guest information booklet to decide how to spend your holiday week. The country kitchen enjoys modern cream shaker-style kitchen units, beams on the ceiling, a farmhouse style dining table and chairs and a very good range of appliances that will please the chef in your group.

Upstairs you will find the blue and white family bathroom with its bath and overhead shower and the cottage's two bedrooms. The master enjoys a comfy double bed and gorgeous views from the windows. The second room is a



delightful twin. Both bedrooms are characterful with beams on the ceilings and pretty colour palettes. The views of the stream at the back are so lovely.

Guests enjoy delightful outdoor space at Stream Cottage with a pretty, enclosed rear patio and a front courtyard lawn garden.

The fabulous one hundred and twenty acre Pontardawe Country Estate sits in the ancient hamlet of Cilybebyll, surrounded by beautiful rolling Welsh countryside. The historic estate boasts links to the descendants of Welsh Kings, Arthurian legend, tales of the Mabinogion, the Norman invasion, the Earls of Pembroke, Winston Churchill's secret army, eighteenth century prisons, Charles II, the tea plantations of Ceylon, coal mining, the Industrial Revolution and much more. A World War II hideout, used by Churchill's Secret Army was found in the estate's private bluebell woodland and gained recognition as a Scheduled Ancient Monument of national importance. In addition to its superb grounds, the Pontardawe Estate boasts the gorgeous manor house, Pontardawe Country House, as well as a number of other holiday cottages that Oliver's Travels also feature. Guests can book each of these individually or for a special celebration, you may want to consider booking a selection of the cottages with or without the manor house. Guests staying at the cottages are free to roam the estate, enjoying the beautiful natural scenery and its amazing wildlife. The estate is brimming with woodland walks, farm trails, green fields, bluebell woods, rivers and stunning picnic spots. When you have had enough you can head to the splendid Brecon Beacons, the Gower Peninsula, museums and numerous delightful towns and villages.

Facilities

Ideal for Kids • Walking/Hiking Paths • Pets on Request • Great Value •
Cots (Cribs) • Ideal for Teens • Cottage • Wi-Fi/Internet • Rural Location •
Washing Machine • Outstanding Landscapes • Outdoor Pursuit & Activities
• Tourist Towns & Villages • Dishwasher • Microwave • Satellite TV •
Working Fireplace/Woodburner • Heating • Ideal for Babies & Toddlers •
High Chair(s)

Interior & Grounds

Ground Floor

- Open-plan living area
- Fully-equipped kitchen with dining facilities
- Cloakroom

First Floor

- Bedroom with double bed
- Bedroom with twin single beds
- Family bathroom

Exterior Grounds

- Private patio and enclosed garden
- 100 acres of Estate gardens to explore

Additional Facilities

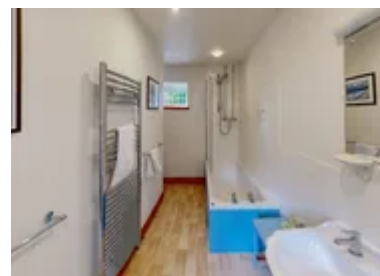
- Wi-Fi
- TV
- Travel cot & highchair available on request (*please bring your own cot linen*)
- Parking



Location & Local Information

Stream Cottage enjoys a fabulous position on the one hundred and twenty acre Pontardawe Country Estate in the tranquil hamlet of Cilybebyll, close to the village of Pontardawe. The estate is full of forests, rivers, bluebell woods, sprawling fields, bird nesting boxes, beautiful picnic spots, a stately manor house and other holiday cottages. It is the perfect rural retreat between the Gower Peninsula and the Brecon Beacons National Park. The estate courtyard where many of the cottages are located is bounded by the upper reaches of the picturesque River Clydach and on the other side by green parkland pastures grazed by sheep and cows. The high hills of blue pennant sandstone provide the backdrop to an idyllic and tranquil scene. Guests booking Stream Cottage are free to roam the estate including its award winning bluebell woodland. The estate's farm walk is a circular walk for guests which meanders from the doorstep of Stream Cottage towards the summit of Mynydd Marchywel and back. En route, guests follow mountain streams, climb over stiles, explore the bluebell woods and traverse lazy green fields. On a clear day, the panoramic vistas include the Swansea Valley, Swansea Bay, the Bristol Channel and the Brecon Beacons National Park. The cottage is an excellent base for those that want to explore the landscapes by bike. The Afan Forest and Bike Park Wales are easily accessible. There is a golf course close by for golf fans and the supermarket in Pontardawe is open 24 hours for those late night emergencies. There is also a village pub within walking distance.

The beautiful Swansea Bay coastline and the Gower Peninsula with its idyllic secret coves in and glorious stretches of fine sand is just twenty minutes drive away. You should not miss a trip to the iconic, award winning Rhossili Bay with its dramatic, panoramic views and excellent hiking paths. Rhossili has been described as 'The supermodel of British beaches' by The Independent and has won numerous accolades from UK Travel Writers including the best spot for a picnic. The Times listed the beach as 'The UK's No.1 dog friendly beach' so if you do have your furry friend with you, you should definitely go. At



low tide the beach is enormous and it is possible to walk across to Llangennith or even to the Worms Head. It is steep to walk down to the beach so it is not suitable for pushchairs or visitors with mobility issues.

The Victorian seaside village of Mumbles with its promenade, shops and restaurants is worth a visit and for those that want to stay outdoors, the National Showcaves of Wales and the Vale of Neath's spectacular waterfalls are nearby. Guests enjoy visits to the Pembrokeshire Coast National Park and the Glamorganshire Heritage Coast, both less than half an hour away.

Mumbles was one of Dylan Thomas' many stamping grounds and is the home of some world class ice cream. Mumbles is steeped in history with its lighthouse being built in 1794. It also boasts a Victorian pier and Oystermouth Castle which sits on the hilltop overlooking the sea. There are lovely boutique shops and galleries including the gorgeous Lovespoon Gallery and the Gower Gallery. No visit to Mumbles would be complete without sampling some 'fresh off the boat' seafood, its handmade chocolates and its fantastic ice creams.

Local Amenities

Nearest Town/City	Swansea (16.4km)
Nearest Town	Pontardawe (3.2km)
Nearest Restaurant	The Butcher's Arms, Pontardawe (2.8km)
Nearest Supermarket	Tesco Superstore, Pontardawe (3.4km)
Nearest Golf	Pontardawe Golf Club (4.9km)
Nearest Beach	Aberavon Beach (21km)

What we love

- Stream Cottage is a gorgeous, cosy country cottage with a lovely enclosed patio overlooking the stream and a front courtyard garden
- This fabulous cottage is located on a private one hundred and twenty acre estate with wonderful country walks from the doorstep through the woodlands and beside the river
- The cottage enjoys a fascinating history. It is always lovely to stay somewhere and imagine how it was in the past. There are some wonderful images in the cottage of days gone by on the estate

What you should know...

- Larger groups can also rent the adjoining cottage, increasing the total capacity to 8 guests. Check out the Mountain Coach House (<https://www.oliverstravels.com/britain-ireland/wales/south-wales/mountain-coach-house/>) listing for more details.

Terms & Conditions

- **Security deposit:** There is no security deposit, but should there be any damage or loss caused by you or your guests during your stay you will be liable for the cost.
- **Arrival time:** 4pm
- **Departure time:** 10am
- **Energy costs included?:** Yes, included in the rental price
- **Linen & towels included?:** Yes, included in the rental price
- **Pets welcome?:** A maximum of 2 well-behaved dogs are allowed on request for an additional charge of £30 per dog, per booking. To be requested at the time of booking
- **Other Ts and Cs:** Larger groups can also rent the adjoining cottage, increasing the total capacity to 8 guests. Check out the Mountain Coach House listing for more details.
- **Changeover day:** Friday
- **End of stay cleaning available?:** Yes, included in the rental price
- **Smoking Allowed?:** No smoking
- **Minimum stay:** Please note that there is a 2-night minimum stay, this may be increased across peak dates
- **Internet access?:** Yes, Wi-Fi is included in the rental price