

Caminha Views

Region: Portugal Sleeps: 4

Overview

Presenting an exquisite contemporary villa nestled in an elevated setting, offering unparalleled, uninterrupted vistas. Situated within convenient reach of the captivating coastal Roman town of Caminha, this villa stands as an idyllic haven for small families seeking refuge.

The villa effortlessly blends form and function, featuring an open-plan living and dining area, ideal for relaxation after a day of exploration. Sink into plush seating, perhaps with a good book, as you gaze upon the inviting swimming pool. The well-equipped kitchen beckons culinary endeavours indoors or on the barbecue, with alfresco dining on the expansive terrace under the starlit sky and the uninterrupted ocean panorama.

This single-storey abode boasts a spacious layout, encompassing an inviting open living space, a dining area accommodating up to 6, and a fully equipped kitchen. Sliding glass doors effortlessly connect the indoors with the front decking, an optimal spot for al fresco dining against the backdrop of the mesmerizing sea view. Two well-appointed double bedrooms, each with an adjacent or ensuite shower room, offer comfort and privacy. Glass doors in each bedroom seamlessly blend the interior with the outdoor decking.

Exuding a sense of calm, the mature garden and sun-soaked terrace, complete with a barbecue, lend themselves perfectly to outdoor dining. The private swimming pool, measuring 8 meters by 2.15 meters with a depth of 1 meter, provides a refreshing retreat. Practical amenities include a laundry room and ample parking.

In summary, this contemporary villa offers a harmonious blend of modern comfort, panoramic views, and proximity to local treasures. It stands as an impeccable choice for a



tranquil getaway, providing all the necessary amenities for a memorable vacation escape. Whether you're lounging poolside, savouring an outdoor meal, or exploring the nearby towns, this villa presents a seamless fusion of convenience and elegance.

Facilities

Wi-Fi/Internet • Air-Con • Washing Machine • Villa • TV • Cycling • Walking/Hiking Paths • Ground Floor Bed & Bath • Rural Location • Cots (Cribs) • Private Pool • Beach Nearby • Modern • Ideal for Teens • <1hr to Airport • Microwave • High Chair(s) • Parking Space • Outstanding Landscapes • Outdoor Pursuit & Activities

Interior & Grounds

Ground Floor

- Ample living room with comfortable seating and access to the terrace
- Open plan dining area for 4 people and access to the terrace
- Fully equipped modern kitchen and access to the terrace
- Laundry room with washing machine
- Shower room
- Master bedroom with double bed, access to the terrace and en-suite shower room
- Bedroom with double bed and access to the terrace

Exterior Grounds

- Private swimming pool (8 x 2.15 m; depth 1 m)
- Large terraced area
- Various sun loungers
- Covered terrace
- Outdoor dining
- Garden furniture
- Private parking
- Barbecue

Additional Facilities

- Wi-Fi connection
- Air conditioning
- Washing machine
- Hair dryer
- Cot and high chair

Registration Number: 122117/AL



Location & Local Information

Gorgeous Caminha Views enjoys an enviable, elevated position in a quiet residential neighbourhood just on the outskirts of historic Caminha. While there are plenty of neighbours around you, Caminha Views' smart design and landscaping provide lots of privacy and quiet during your stay. The slow-paced nature of its location all but guarantees peace and tranquillity amongst breath-taking panoramic views.

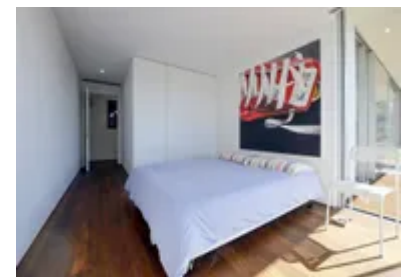
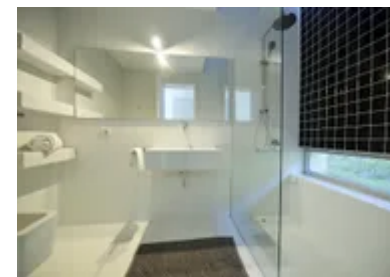
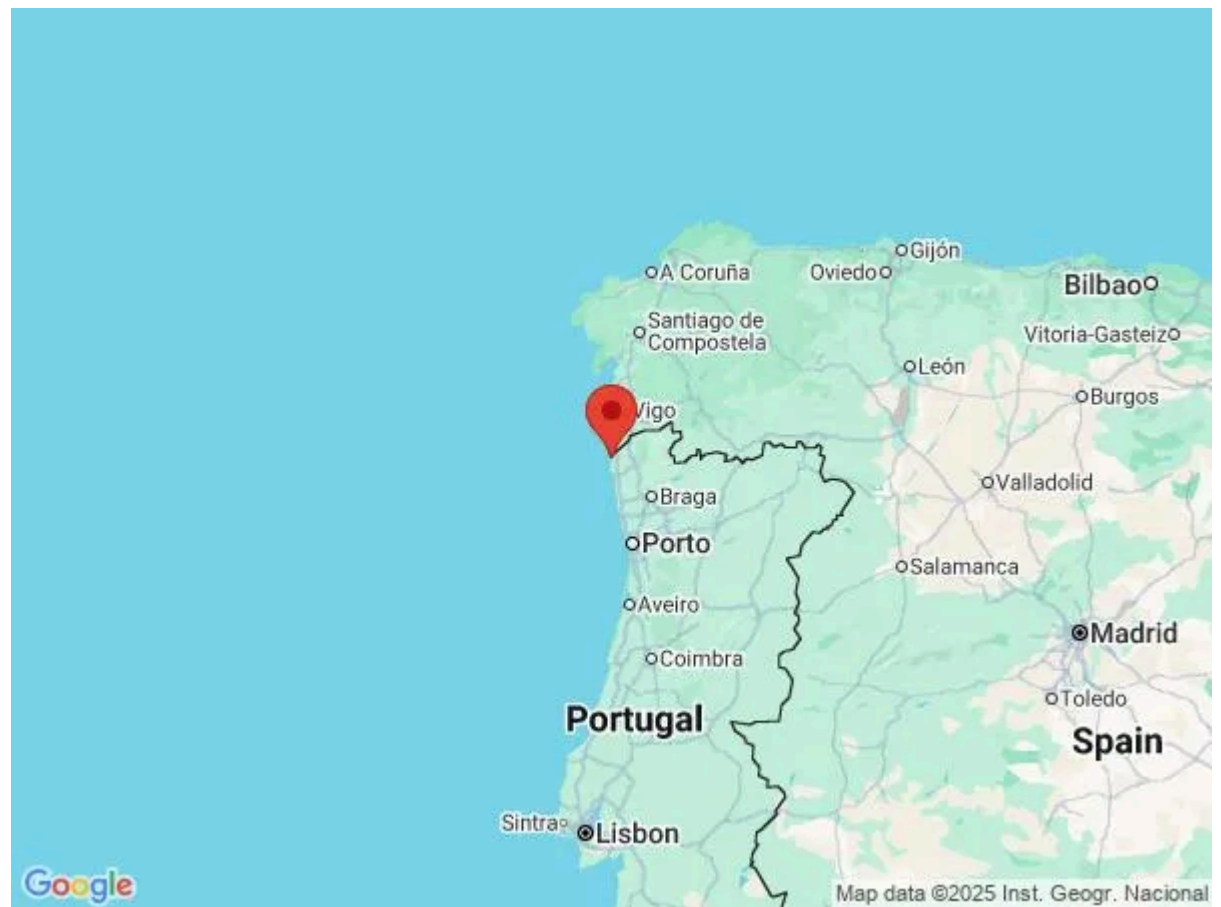
Caminha itself is just a ten-minute drive away from Caminha Views. While you can walk into Caminha, it would take around 40 minutes so we do recommend renting a car during your stay.

While in town, you'll be able to get a first-hand glance at the beautiful slow pace and traditional atmosphere of Caminha. Somehow, this enchanting town has managed to stay relatively off-radar for tourists, allowing Caminha to retain its unique style and pace of life. In Caminha, you can dine at traditional Portuguese restaurants, sip coffee on the cobbled streets from a local cafe or rub shoulders with the locals at one of the laid-back bars.

But, to get there in the first place, you'll need to find Caminha Views. Thankfully, the region is well-served by excellent road links that make finding your way around an absolute doddle. If you're heading to the villa shortly after arriving in Portugal, you'll likely land at Faro Airport, which is just an hour south of Caminha Views.

If you're a group of beach lovers, then you're sure to love Caminha Views. Just a five-minute drive away from home is the small village of Santana, which borders the gorgeous Praia de Moldeo. On Praia de Moldeo, soft golden sands stretch before you while the waves of the Atlantic Ocean lap at its shores and laid-back local bars and diners line the coast.

Though smaller than Caminha, Santana has everything you need to enjoy your holiday - like bars, restaurants, shops



and a handful of takeaways. Your nearest grocery store is also located here in Santana.

Local Amenities

Nearest Airport	Porto Airport (88 km)
Nearest Ferry Port	Caminha Ferry Port (4 km)
Nearest Village	Moledo (1 km)
Nearest Town/City	Caminha (4 km)
Nearest Restaurant	Gaviota (1 km)
Nearest Bar/Pub	Bar da Praia (2 km)
Nearest Supermarket	ALDI (5 km)
Nearest Beach	Moledo Beach (3 km)
Nearest Golf	Porto Golf Course (88 km)
Nearest Tennis	Codesal Tennis Club (7 km)

What we love

- Enjoy breathtaking ocean panoramas, creating a serene backdrop for relaxation
- Sliding glass doors merge indoor living with the terrace, offering convenience and elegance
- Near Caminha town, this villa offers comfort, a private pool, and modern amenities for a memorable escape

What you should know...

- The area around Caminha Views can be hilly in places so it's not always suitable for group members with mobility issues
- Caminha Views is quite remote so you'll need a car if you're planning to go out regularly
- While kids are more than welcome to stay at Caminha Views, there's little for them to do while there
- The swimming pool is an elevated infinity-style pool with no barrier at its edge so be sure to keep an eye on children when using the pool

Terms & Conditions

- **Security deposit:** €450 charged to client's credit card as a pre-authorisation two weeks before arrival and refunded two weeks after departure, subject to full inspection.
- **Arrival time:** 4 pm
- **Departure time:** 10 am
- **Energy costs included?:** Yes, included in the rental price.
- **Linen & towels included?:** Yes, included in the rental price.
- **Pets welcome?:** Not allowed.
- **Other Ts and Cs:** First cot and high chair included in the rental price, please enquire before arrival.
- **Changeover day:** Flexible.
- **End of stay cleaning available?:** Yes. However, guests are required to leave the accommodation clean, tidy and in the same condition as on their arrival. Any extra cleaning, laundry, maintenance and/or rubbish disposal required will be charged against the security deposit.
- **Smoking Allowed?:** Smoking & Vaping are not permitted.
- **Minimum stay:** 5 nights. All other durations on request.
- **Heating costs included?:** Not available on this property.
- **Tax:** Tourist Tax up to €1.50 per person per night for over 13's (max. 7 nights) is not included in the rental price and will need to be paid on arrival to the supplier.
- **Internet access?:** Wi-Fi internet access included.
- **Pool towels included?:** Yes, included in the rental price.