

# Chalet Jonquille

**Region:** Chamonix **Sleeps:** 9

---

## Overview

Chalet Jonquille is a bright and welcoming retreat set within the spectacular scenery of the Chamonix Valley. Its peaceful position offers easy access to both the mountains and the lively atmosphere of the region, making it an excellent base for families and groups seeking adventure throughout the year. The chalet is extremely close to the La Flégère ski lift and within walking distance of Les Tines train station, while the centre of Chamonix is only a short drive away.

In winter the chalet places guests within reach of some of the finest ski terrain in Europe. La Flegere provides immediate access to wide open pistes with routes for every level, while nearby Grands Montets is known for reliable snow, impressive elevation and challenging off piste opportunities. After energetic days on the slopes the chalet's cosy living space offers a comfortable place to unwind, with a fireplace, large sofas and warm alpine styling that creates an inviting atmosphere.

Summer stays at Chalet Jonquille are equally appealing. The surrounding valley is well known for hiking and mountain biking, and guests can enjoy water sports, climbing, golf and paragliding in the wider Chamonix area. The private garden becomes a relaxing sun spot for al fresco meals or quiet afternoons admiring the mountain backdrop. The chalet's flexible bedrooms and modern kitchen make it practical for longer holidays, and the balconies on the upper floor make the most of the views.

Combining generous living areas with a convenient location and year round appeal, Chalet Jonquille offers a comfortable and versatile base for exploring one of the most dramatic mountain landscapes in the Alps.

## Facilities

Tennis Nearby • Ski Lift Nearby • Ski School Nearby • Ski Room • Mountain View • Bus/Shuttle To Slopes • Ski Chalet • Paragliding • Self-Catered • Skiing • Cycling • Historical Sites • Watersports • Horse Riding • Walking/Hiking Paths • Walk to Village • Golf Nearby • Fishing • Ideal for Kids • Ideal for Teens • Cots (Cribs) • Special Offer • Has Discount • Great Value • Walk to Restaurant • Parking Space • Wi-Fi/Internet • Lakes and Mountains • Summer Chalet • Easy By Train • Washing Machine • Coffee Machine • Outstanding Landscapes • Outdoor Pursuit & Activities • Tourist Towns & Villages • TV • Indoor Games • DVD • Tumble Dryer • Dishwasher • Microwave • Working Fireplace/Woodburner • Heating • Ideal for Babies & Toddlers • High Chair(s)



# Interior & Grounds

## The Chalet

### Ground Floor

- Living room: Sofa seating, TV, DVD player, fireplace, access to garden
- Dining area: Table with seating for the whole group
- Kitchen: Oven, hob, dishwasher, microwave, fridge, coffee machine, kettle
- Laundry room: Washing machine and dryer
- Additional WC

### First Floor

- Master Bedroom: Double bedroom with balcony access & en-suite bathroom
- Bedroom 2: Two single beds with balcony access
- Bedroom 3: Double bedroom with balcony access
- Bedroom 4: Family room featuring a double bed, single bed and en-suite bathroom
- Modern family bathroom
- Separate WC

### Exterior

- Private garden
- Mountain views
- Balcony
- Alfresco dining space
- Parking

### Additional Facilities:

- Wi-Fi
- Heating
- Fireplace
- TV
- Washing machine
- Tumble dryer
- Baby cot & Highchair are available and subject to extra charge. Please see Ts&Cs for rates



# Location & Local Information

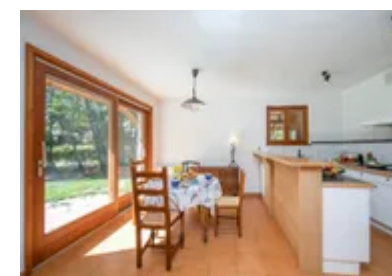
Chalet Jonquille enjoys a superb position in the Chamonix Valley, surrounded by towering peaks and wide open alpine landscapes. The chalet benefits from a peaceful residential setting while remaining close to the action, with the La Flégère ski lift only moments away. This gives guests quick access to some of the most celebrated slopes in Europe, from gentle pistes ideal for building confidence to more demanding terrain at Grands Montets. Ski schools, rental shops and welcoming mountain restaurants are all within easy reach, making the area suitable for skiers of every ability.

The chalet is also conveniently located for exploring Chamonix and its surrounding hamlets. Les Tines train station is a short walk away, offering simple connections throughout the valley, and Chamonix centre can be reached within minutes by car. The region is known for dramatic scenery, impressive glaciers and spectacular viewpoints, including the Aiguille du Midi Skywalk.

Summer transforms the valley into a hub of outdoor adventure. Guests can enjoy hiking, cycling, climbing, golf and a variety of water sports, while the chalet's sunny garden provides a peaceful place to relax after active days in the mountains.

## Local Amenities

Nearest Airport	<b>Geneva (108 km)</b>
Nearest Bar/Pub	<b>Bar Eden (1.6 km)</b>
Nearest Equipment Hire	<b>Skiset Excelsior (1 km)</b>
Nearest Golf	<b>Chamonix Golf Club (1.3 km)</b>
Nearest Piste	<b>Evettes (Via Flégère lift) (1.6 km)</b>
Nearest Restaurant	<b>CASABIANCO (500 m)</b>
Nearest Ski Hire	<b>Skiset Excelsior (550 m)</b>
Nearest Ski Lift	<b>Flégère (1.6 km)</b>
Nearest Supermarket	<b>Marché U et Drive (4.7 km)</b>



Nearest Tennis	<b>Chamonix Tennis Club</b> (3.5 km)
Nearest Town/City	<b>Chamonix</b> (4.6 km)
Nearest Train Station	<b>Les Tines</b> (600 m)
Nearest Village	<b>Argentière</b> (5.1 km)

## What we love

- The chalet's peaceful position with sweeping Mont Blanc views from the garden and balconies is a great place to spend an evening after exploring the mountainous surroundings of the Chamonix Valley
- The quick access to the La Flégère Gondola is ideal for a smooth start to explore the mountains
- Chalet Jonquille has easy access to Les Tignes train station for simple movement around the Chamonix Valley

## What you should know...

- A car is recommended for exploring the wider Chamonix Valley and nearby villages
- While Wi-Fi is provided, the connectivity may vary due to high mountains either side of the property
- Bedroom configurations vary slightly, with one room offering flexible bed arrangements depending on availability

# Terms & Conditions

- **Security deposit:** A damage waiver is included in the price to help you enjoy a peaceful stay. The waiver provides a limited damage cover in case of any damage to the property or its contents (except in the case of deliberate or reckless acts) up to the value of €1,000. Above €1,000 claims will be made to recoup the extra charges incurred to repair any damage.

- **Arrival time:** Check-in 4.00 PM.

- **Departure time:** Check-out 10.00 AM.

- **Energy costs included?:** Yes, included in the rental price.

- **Linen & towels included?:** Bed linen and bath towels are included in the rental price. Tea towels & beach towels are not supplied.

- **Pets welcome?:** Not allowed.

- **Other Ts and Cs:** Please note that rental of a cot and highchair is at an extra cost paid directly to the owner: Cot: 20€ per week Highchair: 15€ per week

- **Changeover day:** Flexible.

- **End of stay cleaning:** Extra €320, payable to Oliver's Travels with the balance payment. Guests are required to leave the accommodation clean, tidy and in the same condition as on their arrival. Any extra cleaning, laundry, maintenance and/or rubbish disposal required will be charged against the security deposit.

- **Smoking Allowed?:** Smoking and Vaping not permitted.

- **Heating costs included?:** Yes, included in the rental price.

- **Tax:** French Tourist Tax is included in the rental rate.

- **Internet access?:** Wi-Fi internet access included.

- **Damage Waiver:** A damage waiver is included in the rate to help you enjoy a peaceful stay. The waiver provides a limited damage cover in case of any damage to the property or its contents (except in the case of deliberate or reckless acts) up to the value of €1,000. Above €1,000 claims will be made to recoup the extra charges incurred to repair any damage.

**The chalet is available year-round, but facilities, property and local amenities may vary depending upon season.**