

Le Chai

Region: Dordogne **Sleeps:** 12

Overview

Enjoy the beauty of two gardens at Le Chai, a holiday rental house in the Dordogne. The large 19th century home sits within 7.5 acres of private grounds, including a picturesque landscaped garden for relaxation and another designed around a large swimming pool (18x9m), with a lawn for outdoor activities such as badminton, table tennis, cricket and a giant chessboard.

Inside, this traditional home features high ceilings, beautiful hardwood floors, antique furnishings and characterful decor. With 2 charming living rooms and a dining room for 12 with a large window for fresh air, it feels like an authentic old French home where you can all gather in pretty surroundings. The 6 bedrooms, some with exposed wooden beams, sleep 12, and there are 4 modernised bathrooms. With wireless broadband internet and cable TV with English and US channels, you can keep in touch with home.

The region is known for its Perigord cuisine—like truffles—and Bergerac appellation wines. Le Chai is a short drive from Monbazillac and Pecharmant vineyards, 2 of the most famous AOCs. The countryside is also dotted with fortified hilltop towns where you can explore the past, such as the medieval castle at Hautefort.

Close to the village of Mouleydier (5km) and Lalinde (10km), Le Chai is only 14 kilometres from the Bergerac airport.

Facilities

Ideal for Xmas/NY • Walking/Hiking Paths • Ground Floor Bed & Bath • Wi-Fi/Internet • Golf Nearby • Fishing • Wine Tasting • Maid Service Available • Great Value • Rural Location • Indoor Games • Cots (Cribs) • DVD • Private Pool • Bicycles Provided • Games Room • Chef/Cook Available • Babysitting Available • On-Site Concierge • Butler Available • Baby bath • Ideal for Teens • Pets on Request • Outdoor Games • Working Fireplace/Woodburner • Heating • High Chair(s) • Outstanding Landscapes • Outdoor Pursuit & Activities • Tourist Towns & Villages



Interior & Grounds

Le Chai Interior

Ground Floor

- Kitchen (22m²), fully equipped including dishwasher
- Dining room (27m²) leading through to living area (35m²)
- Second living room (27m²)
- Master bedroom with king-size bed (35m²) and en-suite shower room and WC
- Double bedroom with king-size bed (27m²)
- Twin bedroom (20m²)
- Twin bedroom (21m²) with en-suite shower room
- Family bathroom with WC
- Separate WC

First Floor

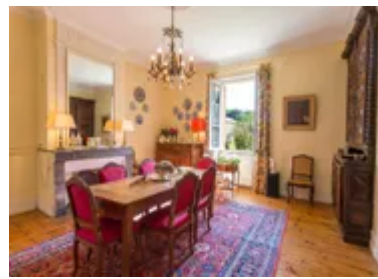
- Double bedroom with queen-size bed (25m²)
- Twin bedroom (18m²)
- Shower room and separate WC

Outside Grounds

- Swimming pool (15mx7m) on adjoining grounds (approx 100m from the house) with safety pool alarm system
- Gardens and lawns featuring outdoor games

Facilities

- Wi-Fi
- Cable TV with English and US channels
- DVD player
- Stereo system
- Badminton
- Table tennis
- Cricket
- Giant chessboard
- Washing machine



Location & Local Information

There is a village you can walk to however it does not have any shops or a *boulangerie*. There is however a great kids playground in the village that will appeal to younger guests. The nearest bakery is in Mouleydier (5km).

Medieval Lalinde is just 10km away, a pretty market town on the Dordogne river where you will find shops, restaurants and a supermarket. The market takes place on a Thursday morning and there's a lovely atmosphere as locals come out to buy lots of fresh, good quality produce.

Vineyards and fortified towns are the highlights of the "Périgord Pourpre". The house sits in the heart of Monbazillac and Pécharmant – the two most famous vineyards among 13 other "AOCs" - just 15km from the city of Bergerac.

The old town of Bergerac has kept its architectural heritage from the 14th, 15th and 16th centuries that can be seen in the half-timbered houses. It is the starting point to discover the vineyards and castles of the region.

Fortified towns such as Beaumont, Eymet, Issigeac, Molières and Monpazier, among others, testify to the history of the Périgord, especially the rivalry with England that started in the 12th century.

Local Amenities

Nearest Airport	Bergerac Airport (14km)
Nearest Bar/Pub	Lalinde (10km)
Nearest Golf	Golf Du Château Les Merles (8km)
Nearest Restaurant	Lalinde (10km)
Nearest Shop	Bakery in Mouleydier (5km)
Nearest Supermarket	Lalinde (10km)
Nearest Town/City	Bergerac (15km)
Nearest Village	Mouleydier/Lalinde (5km/10km)



What we love

- The pool at this holiday home in the Dordogne is expansive, with loads of space for games around it
- Because the grounds are fully walled, children can explore the gardens safely
- The owner, Christine (who lives next door), is an excellent chef, so catering is a MUST!

What you should know...

- There's a village within walking distance with a great kids playground, but no boulangerie or shops. Stock up in nearby Lalinde (10km) or Bergerac (15km).
- The pool is 100 meters from the house on adjoining grounds, so pack up your towels, sun-cream and shades for the afternoon
- The owner lives just next door, for check-in and check-out, but you may occasionally see her on the grounds as well

Terms & Conditions

- **Security deposit:** €1200 paid via bank transfer to the owner prior to arrival. This will be returned within 8 days of departure, subject to full inspection.
- **Arrival time:** By arrangement.
- **Departure time:** By arrangement.
- **Energy costs included?:** Included in the rental price in the summer. €100 per week in the winter.
- **Linen & towels included?:** All linen and bath towels are included in the rental price.
- **Pets welcome?:** Pets allowed.
- **Changeover day:** Saturday - all other changeover days on request.
- **End of stay cleaning available?:** €100.
- **Smoking Allowed?:** Outdoors.
- **Insurance:** It is recommended that all guests take out insurance to cover against potential cancellation and any accidental damage caused during your stay at the property.
- **Pool towels included?:** Yes.