

Chalet Nuit

Region: Espace Killy **Sleeps:** 10

Overview

There are so many ways to enjoy a ski holiday. One is staying in a simple traditional ski chalet and spending all day on the slopes, cooking pasta and falling asleep after waiting for ages for a bathroom to be free. Chalet Nuit offers an altogether experience. It is hard to beat the luxury, the styling and the fantastic treats offered by Chalet Nuit and its sister villa Chalet Jour. Chalet Nuit offers sophistication, lavish furnishings, an indoor swimming pool with a swim jet system and a hammam, a seriously amazing home cinema room with Playstation, an excellent movie selection and all the channels you could wish for, the most amazing living spaces, five gorgeous bedroom suites and even the ski room boasts leather seating and cabinetry hand made by a local craftsman. It seriously does not get better than this!

Even the most discerning of ski guests will be overwhelmed by the beauty of this chalet and the outstanding services offered. You will be greeted with a welcome bottle of champagne and a selection of spirits and soft drinks, a delicious breakfast will be prepared for you each day, a scrummy afternoon tea will be waiting for you when you return from the mountain and there is a daily shuttle service to and from the slopes. The chalet comes with a fabulous Bose sound system so that you can enjoy your favourite tunes plus there is Apple TV and an iPad dock. The kitchen is not only ultra-stylish, it is of professional quality and for an extra charge you may want us to arrange a private chef. A chalet manager and team will be at your disposal during your stay for reception, cleaning services, breakfast, the shuttle bus and concierge services. Chalet Nuit is perfect for groups of friends, a large family or perhaps even two families. If you are a larger group, you may also want to book Chalet Jour which enjoys the same design but with a totally contrasting colour palette.



This truly magnificent chalet is nestled in one of the most exclusive and prestigious ski areas in France. Val d'Isere is nestled at the foot of the glacier that feeds the Isere River and is protected by the Daille gorge. Its mighty mountains, the Solaise and the Face de Bellegarde are famous for the exploits of some of the greatest sporting champions. With links to Tignes, guests enjoy a massive ski playground. Val d'Isere itself boasts 300km of slopes, a snowpark and incredible apres-ski, gourmet dining and boutique shopping options. The heart of Val d'Isere oozes an authentic Savoyard charm throughout its pretty, cobbled streets lined with stone houses. Chalet Nuit and its sister chalet sit quietly in total privacy at the entrance to the resort.

Interior designers have worked wonders in Chalet Nuit. Its cool alpine stone blends beautifully with the many other materials used throughout the chalet. You will discover marble, beautiful wood, plush fabrics, stainless steel and gorgeous ceramic tiling. The craftsmanship and attention to detail is simply mesmerising. No effort or cost has been spared to create an environment where you will feel indulged and totally relaxed. As the name of the villa may suggest, the spaces are filled with a refined colour palette of anthracite and black. You will feel cocooned in luxury to the point that you will not really want to leave this ski chalet paradise.

As soon as you arrive at Chalet Nuit, you will discover your luxurious swimming pool and hammam area. The pool is equipped with state-of-the-art 'endless pool' swim jets. The specially designed area comes complete with its own hammam and you may like to book the services of a masseuse for an extra treat during your stay. The design of this dreamy space is just magical with stepping stones over the pool, relaxation sofas, power showers and a massage table. It is much more five star boutique hotel than typical ski chalet.

The main living space of Chalet Nuit is just sublime, a masterpiece of sultry tones, first class furnishings and phenomenal design with a suggestion of Savoyard charm. At the far end with an attractive wooden vaulted ceiling

and a wall of glass doors and windows, sumptuous sofas sit adorned with plush scatter cushions along with majestic armchairs in front of a crackling, atmospheric fire. Guests can head out to the enormous terrace for wonderful snowy vistas. Behind this is an ultra-classy, very sociable dining table and chairs where you can enjoy delicious feasts and your hearty breakfasts. The home cinema room is just perfect for a cosy night in watching a movie. You can sink into the plush sofas enjoying a cup of tea or a glass of your favourite tippie to enjoy your perfect choice of movie on the big screen. If you have youngsters with you, you will find it hard to get them out of this exquisite room with its multiple television channels, extensive movie library and Playstation. The kitchen is a meticulous work of art with top-of-the-range professional appliances, gorgeous stainless steel and wood cabinetry and its striking mosaic floor. The chefs in your group will be thrilled to be cooking in such a brilliant space.

Your five luxury bedroom suites are equally impressive with sumptuous furnishings, characterful ceilings, crisp cottons and luxury soft furnishings on the beds and the most stylish of bathroom fittings. Each is a heavenly nest where you can rest your aching limbs and enjoy the sleep of kings.

There is an amazing amount of space to store your ski equipment and clothing. The ski room is a totally luxurious room with sensational made-to-measure cabinetry and fabulous leather seating. It is hard to imagine another chalet having such an impressive space.

Without a doubt, you will experience the ski holiday of your dreams at Chalet Nuit. Its unparalleled craftsmanship and attention to detail cannot be found in many ski resorts.

Facilities

Bus/Shuttle To Slopes • Lakes and Mountains • Wi-Fi/Internet • Coffee Machine • Recommended • Wellness • Ski Chalet • Ideal for Xmas/NY • Self-Catered • Skiing • Walking/Hiking Paths • Chef/Cook Available • Special Offer • Has Offer • Laptop Friendly Workspace • Wow Factor • Maid Service Included • DVD • Walk to Village • Instagrammable • Modern • Spa Treatments Available • Breakfast Included • Xbox/Playstation/Wii • Indoor Pool • Ideal for Kids • Ideal for Teens • Walk to Restaurant • Dishwasher • Microwave • All Bedrooms En-Suite • Smart TV •

Interior & Grounds

The Chalet

Basement

- Home cinema lounge
- Massage room

Ground floor

- Spacious ski room
- Pool and hammam area
- Separate toilet

First floor

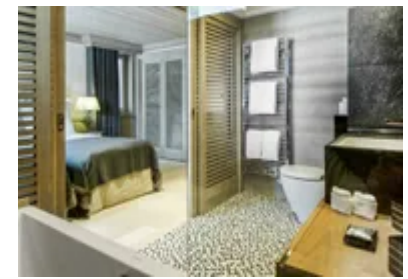
- Open plan living room with log fire chimney, opening onto a large terrace
- Dining area with seating for 10 people
- Fully equipped professional kitchen
- Double bedroom with en-suite bathroom and access to balcony
- Double bedroom with en-suite bathroom

Second floor

- Dedicated work area with desk
- Double bedroom with en-suite bathroom and access to balcony
- Double bedroom with en-suite bathroom
- Double bedroom with en-suite bathroom

Facilities

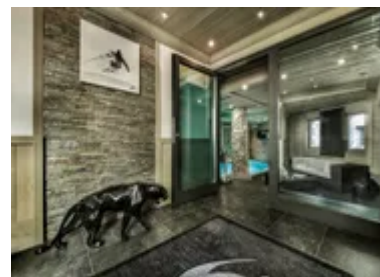
- Wifi
- Bose sound system
- Apple TV
- iPad dock
- PlayStation
- DVDs



Location & Local Information

Val d'Isère enjoys a reputation as one of Europe's most prestigious ski resorts. Together with the next door ski area of Tignes, the area of Espace Killy offers an impressive number of pistes and lifts, not to mention breathtaking panorama with its dramatic Grande Motte glacier. The resort is brilliant for all levels with nursery pistes, magic carpets and excellent ski instructors for beginners. Val d'Isère offers gondolas with heated seats, Wi-Fi, a number of luxury spas, a wonderful leisure centre, a fabulous array of high-end boutiques and a fantastic night life. It is easy to understand why it is one of the most popular ski resorts in Europe! With a ski area comprised of 300 km of slopes with an altitude between 1850m and 3000m, the resort offers an incredible range of pistes, lifts and snowy views. Surrounded by snow-capped peaks, Val d'Isère sits on the border of the stunning Vanoise National Park. Val d'Isère enjoys an authentic alpine atmosphere, a gorgeous historic centre, endless chocolate-box chalets, unique boutiques and fantastic bars and eateries. Val d'Isère's snowfall record is brilliant with skiing usually staying open until the end of the season at the beginning of May. The centre of Val d'Isère is a bustling high street which is surrounded by a number of small hamlets including Le Cret, Le Joseray, Le Chatelard, La Legettaz and Le Laisinant.

The Espace Killy area including Tignes is the birthplace of the Olympic skier Jean-Claude Killy. Its connections and advanced ski infrastructure is excellent with more than 3400 km of pistes and 99 lifts. As well as the Grande Motte glacier which offers 20 km of summer ski runs, it also boasts the challenging black-rated piste, Face de Belvedere with its 915 m drop. Its height altitude from 1850 m to 3400 m guarantees some of the best snow in Europe. The ski area is perfect for all levels of skiers with its mythical slopes, almighty challenges and its quiet ski areas for beginners and children. The Valkids area and Valpark, a brilliant snow park are welcome additions for families. Passes can be bought for any number of days as well as for those that do not want to ski. Family passes are also available. Pedestrians do not have to miss out on the



stunning views and family lunches on the slopes as they can access many lifts including the Solaise gondola, the Pim Pam carpet, the Poum carpet, the Vallon gondola, the Funival, the Daille gondola, the Olympique cable car, the Fornet cable car and the Bellegarde chairlift. The resort operates some brilliant ski schools.

Val d'Isere is a great place for a wander, for evening entertainment and for shopping. It is incredibly picturesque, boasting a pretty 17th century church and delightful, characterful shops, restaurants and bars. It is a known party destination with La Folie Douce being one of its main evening attractions. For those that don't ski or want a day off, there are some excellent spas and a brilliant leisure centre. During the summer, Val d'Isere enjoys fabulous biking and hiking trails and the wonderful Vanoise National Park.

Local Amenities

Nearest Airport	Chambery Airport (144 km)
Nearest Village	Val d'Isere (900 m)
Nearest Restaurant	La Baraque (96 m)
Nearest Bar/Pub	Poya (97 m)
Nearest Train Station	Bourg-Saint-Maurice (32km)
Nearest Supermarket	SPAR (120m)
Nearest Ski Hire	Snowberry Streetside (87 m)
Nearest Ski Lift	Olympique / Solaise (600 m)
Nearest Piste	Face (600 m)

What we love

- Chalet Nuit is sensationally presented. The furnishings, accessories and fittings are all totally luxurious and very tasteful
- The chalet comes with an amazing swimming pool with state-of-the-art jets, a hammam area and a fabulous home cinema room. The list of treats including welcome champagne is incredible. You will feel so special!
- Val d'Iserre is a fabulous ski resort with plenty of charm, a vibrant apres-ski scene, boutique shopping and wonderful character
- Guests staying at the chalet enjoy the help of a superbly professional team who will deliver delicious breakfasts, welcome drinks, indulgent afternoon teas, a shuttle service to the slopes and plenty of good advice

What you should know...

- Guests staying at this exquisite chalet enjoy a bottle of champagne, three bottles of spirits and soft drinks on arrival
- There is a delicious breakfast and afternoon tea that comes as part of the package
- Please let us know if you are interested in hiring a private chef, masseuse or babysitter during your stay. The kitchen is a professional one so you will have great fun cooking but you may want a night off!
- The daily ski shuttle bus service is for one round trip per day
- If you are a very large group, you may be interested in booking Chalet Jour as well as Chalet Nuit

Terms & Conditions

- **Security deposit:** Not required.
- **Arrival time:** Check-in 4.00 P.M.
- **Departure time:** Check-out 10.00 A.M.
- **Energy costs included?:** Yes, included in rental price.
- **Linen & towels included?:** Bed linen and bath towels are included in the rental price.
- **Pets welcome?:** Not allowed.
- **Changeover day:** Usually Sunday (except check-ins on Mondays 19 & 26 December 2022 / 02 & 09 January 2023)
- **End of stay cleaning available?:** Yes, However, guests are required to leave the accommodation clean, tidy and in the same condition as on their arrival. Any extra cleaning, laundry, maintenance and/or rubbish disposal required will be charged.
- **Smoking Allowed?:** Not permitted.
- **Minimum stay:** 7 nights (except check-ins on 11th December 2022 - 8 nights and on 9th January 2023 - 6 nights)
- **Heating costs included?:** Yes, included in rental price.
- **Tax:** French Visitors Tax payable alongside balance (typically costs €1-€5 per adult per night- please enquire if exact amount is required).
- **Internet access?:** Yes, Wi-Fi internet access included in rental price