

Chalet Jour

Region: Espace Killy **Sleeps:** 10

Overview

Welcome to the sublime, super luxury Chalet Jour. This incredible chalet not only offers the most exquisite living spaces and bedroom suites, it comes with an endless list of special treats and bespoke services that even the most discerning of ski guests will be impressed with. Chalet Jour offers sophistication, lavish furnishings, an indoor swimming pool with a swim jet system and a hammam, a seriously amazing home cinema room with an excellent movie selection, all the channels you could wish for and Playstation, the most stylish of living spaces, five heavenly bedroom suites and a ski room that boasts leather seating and cabinetry beautifully hand made by a local craftsman. There cannot possibly be many chalets that provide this level of comfort, luxury and ambience. The chalet also comes with a fabulous Bose sound system so that you can enjoy your favourite tunes plus there is Apple TV and an iPad dock.

Guests staying at Chalet Jour are superbly well looked after by a profession, welcoming team. You will be greeted with a welcome bottle of champagne and a selection of spirits and soft drinks, a delicious breakfast will be prepared for you each day, a scrummy afternoon tea will be waiting for you when you return from the mountain and there is a daily shuttle service to and from the slopes. A chalet manager will be at your disposal during your stay ensuring that the cleaning services, breakfasts, afternoon teas, shuttle services and concierge services run smoothly. You may well be interested in a private chef, babysitters or restaurant reservations. Chalet Jour is perfect for groups of friends, a large family or perhaps even two families. If you are a larger group, you may also want to book our Chalet Nuit next door which enjoys the same design but with a totally contrasting interior colour palette. Whereas Chalet Jour enjoys delightful ivory and silver tones, Chalet Nuit boasts mesmerising anthracite



and black hues.

This truly magnificent chalet is nestled in one of the most exclusive and prestigious ski areas in France. Val d'Isere is nestled at the foot of the glacier that feeds the Isere River and is protected by the Daille gorge. Its mighty mountains, the Solaise and the Face de Bellegarde are famous for the exploits of some of the greatest sporting champions. With links to Tignes, guests enjoy a massive ski playground. Val d'Isere itself boasts 300km of slopes, a snowpark and incredible apres-ski, gourmet dining and boutique shopping options. The heart of Val d'Isere oozes an authentic Savoyard charm throughout its pretty, cobbled streets lined with stone houses. Chalet Jour and its sister chalet sit quietly in total privacy at the entrance to the resort.

The interior designer of the chalet cannot fail to impress. Chalet Jour's cool alpine stone blends beautifully with marble, beautiful wood, plush fabrics, stainless steel and gorgeous ceramic tiling. You will be captivated by the craftsmanship and attention to detail throughout the chalet. It is very clear to see the effort and cost that has been spent to create an environment where you will feel totally indulged and relaxed.

Aside from the smart exterior, the first glimpse of luxury you will be greeted with on arrival at Chalet Jour is the state-of-the-art swimming pool and hammam area. The pool is equipped with superb 'endless pool' swim jets. This magnificently designed area comes complete with its own hammam and massage table. You may like to book the services of a masseuse for an extra treat during your stay. You will discover creative stepping stones over the pool, relaxation sofas and power showers. It is very much five star boutique hotel rather than typical ski chalet.

The main living space of Chalet Jour definitely offers the wow factor! It is a masterpiece of shimmering tones, first class furnishings and phenomenal design with a suggestion of Savoyard charm. The lounge area boasts an attractive wooden vaulted ceiling and a wall of glass doors and windows which lead to a large terrace. It also offers sumptuous sofas adorned with plush cushions along with

majestic armchairs which all sit in front of an atmospheric crackling fire. Beyond the lounge area, you will discover a sophisticated, very sociable dining table and chairs where you can enjoy your delicious breakfasts, tasty afternoon teas and scrummy evening meals. Your home cinema room is brilliantly equipped for cosy movie nights. You can laze on the plush sofas watching the big screen with a chilled glass of wine or perhaps a hot chocolate. The youngsters in your group will not want to leave this exquisite room with its multiple television channels, extensive movie library and Playstation. Your chef's dream of a kitchen is like a work of art with its top-of-the-range professional appliances, gorgeous stainless steel and wood cabinetry and its striking mosaic floor.

Chalet Jour boasts five luxury bedroom suites which offer sumptuous furnishings, characterful ceilings, crisp cottons and luxury soft furnishings on the beds and top notch bathroom fittings. You will sleep like kings, resting your aching legs and dreaming of the ski slopes.

Chalet Jour's ski room is luxurious too, offering smart made-to-measure cabinetry and fabulous leather seating, another very accomplished space. There is no end to the qualities of this exceptional chalet.

Facilities

Wellness • Walking/Hiking Paths • Horse Riding • Skiing • Self-Catered • Paragliding • Ideal for Xmas/NY • Ski Chalet • Wine Tasting • Recommended • Golf Nearby • Wi-Fi/Internet • Coffee Machine • Lakes and Mountains • Bus/Shuttle To Slopes • Walk to Village • Laptop Friendly Workspace • Wow Factor • Has Discount • Has Offer • Special Offer • Maid Service Included • Chef/Cook Available • Private Pool • DVD • Instagrammable • Modern • Spa Treatments Available • Catering Available • On-Site Concierge • Breakfast Included • Xbox/Playstation/Wii • Indoor Pool • Ideal for Kids • Ideal for Teens • Walk to Restaurant • Dishwasher • Microwave • All Bedrooms En-Suite • Smart TV • Sauna/Steam • Home Cinema • Working Fireplace/Woodburner • Heating • Outstanding Landscapes • Outdoor Pursuit & Activities • Tourist Towns & Villages

Interior & Grounds

The Chalet

Basement

- Home cinema lounge
- WC

Ground floor

- Spacious ski room
- Pool and hammam area
- Separate toilet

First floor

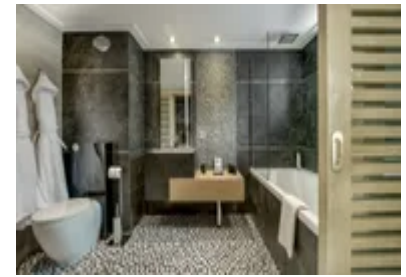
- Open plan living room with log fire chimney, opening onto a large terrace
- Dining area with seating for 10 people
- Fully equipped professional kitchen
- Double bedroom with en-suite bathroom
- Double bedroom with en-suite bathroom and access to balcony

Second floor

- Dedicated work area with desk
- Double bedroom with en-suite bathroom and access to balcony
- Double bedroom with en-suite bathroom
- Double bedroom with en-suite bathroom

Facilities

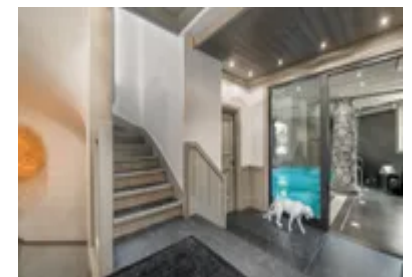
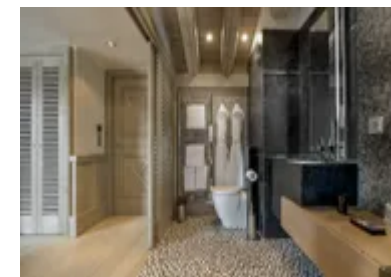
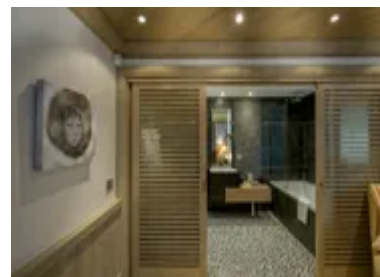
- Wifi
- Bose sound system
- Apple TV
- iPad dock
- PlayStation
- DVDs



Location & Local Information

Val d'Isère enjoys a reputation as one of Europe's most prestigious ski resorts. Together with the next door ski area of Tignes, the area of Espace Killy offers an impressive number of pistes and lifts, not to mention breathtaking panorama with its dramatic Grande Motte glacier. The resort is brilliant for all levels with nursery pistes, magic carpets and excellent ski instructors for beginners. Val d'Isère offers gondolas with heated seats, Wi-Fi, a number of luxury spas, a wonderful leisure centre, a fabulous array of high-end boutiques and a fantastic night life. It is easy to understand why it is one of the most popular ski resorts in Europe! With a ski area comprised of 300 km of slopes with an altitude between 1850m and 3000m, the resort offers an incredible range of pistes, lifts and snowy views. Surrounded by snow-capped peaks, Val d'Isère sits on the border of the stunning Vanoise National Park. Val d'Isère enjoys an authentic alpine atmosphere, a gorgeous historic centre, endless chocolate-box chalets, unique boutiques and fantastic bars and eateries. Val d'Isère's snowfall record is brilliant with skiing usually staying open until the end of the season at the beginning of May. The centre of Val d'Isère is a bustling high street which is surrounded by a number of small hamlets including Le Cret, Le Joseray, Le Chatelard, La Legettaz and Le Laisinant.

The Espace Killy area including Tignes is the birthplace of the Olympic skier Jean-Claude Killy. Its connections and advanced ski infrastructure is excellent with more than 3400 km of pistes and 99 lifts. As well as the Grande Motte glacier which offers 20 km of summer ski runs, it also boasts the challenging black-rated piste, Face de Belvedere with its 915 m drop. Its height altitude from 1850 m to 3400 m guarantees some of the best snow in Europe. The ski area is perfect for all levels of skiers with its mythical slopes, almighty challenges and its quiet ski areas for beginners and children. The Valkids area and Valpark, a brilliant snow park are welcome additions for families. Passes can be bought for any number of days as well as for those that do not want to ski. Family passes are also available. Pedestrians do not have to miss out on the



stunning views and family lunches on the slopes as they can access many lifts including the Solaise gondola, the Pim Pam carpet, the Poum carpet, the Vallon gondola, the Funival, the Daille gondola, the Olympique cable car, the Fornet cable car and the Bellegarde chairlift. The resort operates some brilliant ski schools.

Val d'Isère is a great place for a wander, for evening entertainment and for shopping. It is incredibly picturesque, boasting a pretty 17th century church and delightful, characterful shops, restaurants and bars. It is a known party destination with La Folie Douce being one of its main evening attractions. For those that don't ski or want a day off, there are some excellent spas and a brilliant leisure centre. During the summer, Val d'Isère enjoys fabulous biking and hiking trails and the wonderful Vanoise National Park.

Local Amenities

Nearest Airport	Chambery Airport (144km)
Nearest Village	Val d'Isère (900m)
Nearest Restaurant	La Baraque (96 m)
Nearest Bar/Pub	Poya (97 m)
Nearest Train Station	Bourg-Saint-Maurice (32km)
Nearest Supermarket	SPAR (120m)
Nearest Ski Hire	Snowberry Streetside (87 m)
Nearest Ski Lift	Olympique / Solaise (600 m)
Nearest Piste	Face (600 m)

What we love

- The luxury Chalet Jour is beautifully and tastefully presented. Its exquisite, handpicked furnishings, accessories and fittings are totally luxurious
- The chalet enjoys a fabulous swimming pool with state-of-the-art jets, a hammam area and a fabulous home cinema room. The list of treats including welcome champagne is incredible
- Val d'Iserre is a fantastic ski resort with plenty of Savoyard charm, a vibrant apres-ski scene, excellent boutique shopping and some wonderful gourmet restaurants
- Guests staying at the chalet enjoy the help of a superbly professional team who will deliver delicious breakfasts, welcome drinks, indulgent afternoon teas, a shuttle service to the slopes and plenty of good advice

What you should know...

- Guests staying at this exquisite chalet enjoy a bottle of champagne, three bottles of spirits and soft drinks on arrival
- There is a delicious breakfast and afternoon tea that comes as part of the package
- Please let us know if you are interested in hiring a private chef, masseuse or babysitter during your stay. The kitchen is a professional one so you will have great fun cooking but you may want a night off!
- The daily ski shuttle bus service is for one round trip per day
- If you are a very large group, you may be interested in booking Chalet Nuit as well as Chalet Jour

Terms & Conditions

- **Security deposit:** Not required.
- **Arrival time:** Check-in 4.00 PM.
- **Departure time:** Check-out 10.00 AM.
- **Energy costs included?:** Yes, included in rental price.
- **Linen & towels included?:** Bed linen and bath towels are included in the rental price.
- **Pets welcome?:** Not allowed.
- **Changeover day:** Usually Sunday (except check-ins on Mondays 19 & 26 December 2022 / 02 & 09 January 2023)
- **End of stay cleaning available?:** Yes, However, guests are required to leave the accommodation clean, tidy and in the same condition as on their arrival. Any extra cleaning, laundry, maintenance and/or rubbish disposal required will be charged.
- **Smoking Allowed?:** Not permitted.
- **Minimum stay:** 7 nights (except check-ins on 11th December 2022 - 8 nights and on 9th January 2023 - 6 nights)
- **Heating costs included?:** Yes, included in rental price.
- **Tax:** French Visitors Tax payable alongside balance (typically costs €1-€5 per adult per night- please enquire if exact amount is required).
- **Internet access?:** Yes, Wi-Fi internet access included in rental price