

Riverfront Premier

Region: Bangkok **Sleeps:** 3

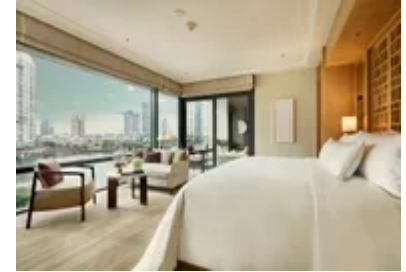
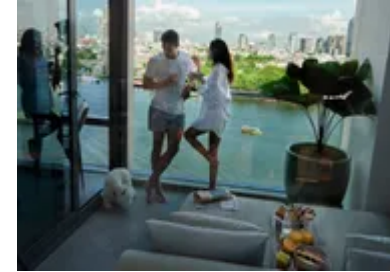
Overview

Perched on the higher floors, the Riverfront Premier Suite offers a serene escape with sweeping views of the Chao Phraya River. Each suite boasts a sophisticated residential style with custom artwork, a spacious marble bathroom, and a choice of king-size or twin beds. Step onto your private balcony, unwind on the divan, and savour the tranquil scene with a ristretto at dawn or a sparkling beverage as the sun sets over the bustling waterway.

Designed for comfort and convenience, the suite includes a walk-in wardrobe, premium in-room technology, and thoughtful touches like Egyptian cotton linens and bespoke toiletries. Enjoy daily cultural experiences and a nightly cocktail ritual at The Living Room, or take advantage of 24/7 in-room dining. Arrive to a delightful welcome of bubbles and bonbons, and make the most of complimentary treats, from a non-alcoholic minibar to courtesy pressing service, ensuring every moment feels special.

Facilities

Maid Service Included • Special Offer • Has Discount • Laptop Friendly Workspace • Wow Factor • Waterfront • Romantic • Cots (Cribs) • Shared Pool • Air-Con • Wi-Fi/Internet • Resort Villa • Kid-friendly excursions • Water excursions/Boat trips • Amusement park • Theme park • Spa Treatments Available • Transfers Available • Water park • Playground nearby • No car required • On-Site Concierge • Breakfast Included • Meal delivery service • Bathroom Toiletries • Ideal for Babies & Toddlers • Ideal for Kids • Ideal for Teens • Walk to Restaurant • <1hr to Airport • Coffee Machine • Safety Deposit Box • Hairdryer • All Bedrooms En-Suite • TV • Outstanding Landscapes • Outdoor Pursuit & Activities • Tourist Towns & Villages



Interior & Grounds

Interiors

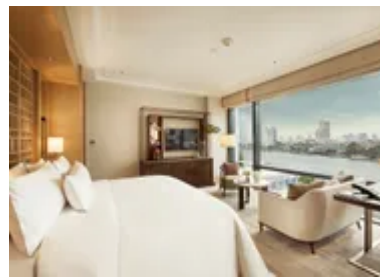
- Walk-in wardrobe with complimentary 5 pieces of courtesy pressing on arrival
- Open plan bedroom with King-size or twin beds (baby cot available on request) and living area space with armchair, sofa and desk
- Separate rain shower and bath

Exteriors

- Private balcony with a seating area for lounging

Additional facilities

- Prosecco and bonbons upon arrival
- Daily complimentary non-alcoholic mini bar with Nespresso coffee machine and a selection of fine teas
- Premium in-room technology i.e. IP television, bluetooth sound system, tablet for room control and guest assistant requests
- Egyptian cotton linens
- 24/7 in-room dining and use of fitness centre
- Bespoke toiletries
- Salon grade hairdryer



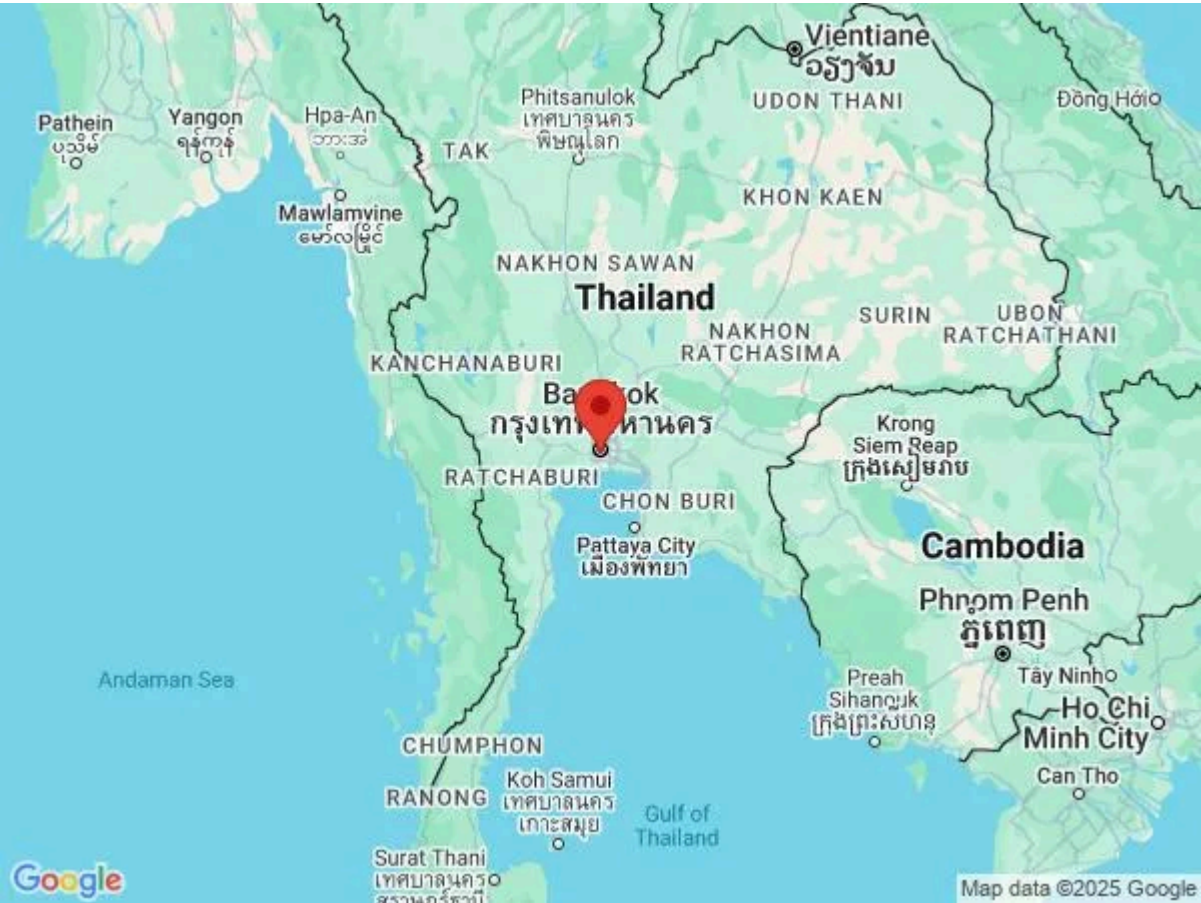
Location & Local Information

Capella Bangkok is situated along the banks of the Chao Phraya River, often referred to as the "River of Kings." This prime riverside location offers a tranquil escape within the bustling city of Bangkok, surrounded by lush greenery and a serene, scenic setting. The area provides guests with easy access to both the historic charms and modern attractions of the city, making it an ideal base for exploration. From river cruises to visits to nearby cultural landmarks, the surroundings of Capella Bangkok capture the essence of Thailand's vibrant heritage.

Just minutes away from the resort, guests can explore iconic temples, bustling markets, and sophisticated shopping districts. The neighbourhood is rich with history, from centuries-old pagodas to colonial-era architecture, offering a glimpse into Bangkok's storied past. The proximity to the Sathorn and Silom districts also means an array of fine dining, nightlife, and entertainment options are within reach, ensuring a well-rounded Bangkok experience for visitors.

Local Amenities

Nearest Airport	Suvarnabhumi Airport (35 km)
Nearest Train Station	Bangkok Train Station (4 km)
Nearest City	Bangkok (7 km)
Nearest Supermarket	Hotel Restaurant (50 m)
Nearest Bar/Pub	Hotel Bar (50 m)
Nearest Supermarket	7-Eleven (350 m)
Nearest Golf	The Royal Bangkok Sports Club (4 km)
Nearest Tennis	The British Club (2 km)



What we love

- Its location along the river allows for excellent transport services for both entertaining and necessary purposes!
- The premium in-room technology adds a new sense of modern luxury. Take advantage of the IP television, Bluetooth sound system, tablet for room control and guest assistant requests.
- Complimentary prosecco and bonbons upon arrival, as well as a range of restaurants and bars to splurge in!

What you should know...

- Some additional services such as pampering spa treatments will incur separate charges
- Set within a fully serviced resort environment, eg not for those who wish for self-catering

Terms & Conditions

- **Security deposit:** Credit card details are required 2 weeks prior to departure for pre-authorisation.
- **Arrival time:** 3 pm
- **Departure time:** 12 pm
- **Energy costs included?:** Yes, included in the rental price.
- **Linen & towels included?:** Yes, included in the rental price.
- **Pets welcome?:** Not allowed.
- **Other Ts and Cs:** A compulsory New Year's Eve Gala Dinner on 31st December at THB 25,000 per person (food only) is required for guests staying over the New Year period. Children below 12 years old are THB 12,500 per child (food only). Complementary for infants less than 3 years old.
- **Changeover day:** Flexible.
- **End of stay cleaning available?:** Yes. However, guests are required to leave the accommodation clean, tidy and in the same condition as on their arrival. Any extra cleaning, laundry, maintenance and/or rubbish disposal required will be charged against the security deposit.
- **Smoking Allowed?:** Smoking & Vaping are not permitted.
- **Minimum stay:** 1 night. All other durations on request.
- **Heating costs included?:** Yes, included in the rental price.
- **Pool heating charge?:** Not available on this property.
- **Tax:** Government tax and service charge included in the rental price.
- **Internet access?:** Wi-Fi internet access included.
- **Pool towels included?:** No.