

# Chevaliers Cider House

Region: Heart Of England    Sleeps: 4

## Overview

The Cider House is one of four holiday cottages on the magnificent Chevaliers Estate in the hamlet of Upton Cressett, near Bridgnorth and Much Wenlock. Sitting in the glorious Shropshire countryside, visitors enjoy amazing scenery, estate grounds and visiting Shropshire's many fabulous market towns. This beautifully presented cottage enjoys two bedrooms so it is perfect for a small family for two couples.

The Chevaliers Estate, selected as one of the Best Ten Stately Homes with accommodation by the Daily Telegraph, boasts huge twisted 16th century brick chimneys and a 15th century Great Hall. Part of the hall actually dates back to 1380 and it is believed that the young Edward V, son of King Edward IV, and one of the famed 'Princes in the Tower' stayed at the manor in April 1483 on his fateful journey from Ludlow to the Tower of London. The hall stands in extensive stunning topiary gardens next to a beautiful Norman church and one of the finest turreted gatehouses in the country.

In 'The Best Thousand Houses in England', Simon Jenkins refers to Chevaliers Estate as an 'Elizabethan gem'. Taking the fabulous Jack Mytton Way walking route that Shropshire is famous for, you can visit a charming pub. Also popular is the Abbesses' Way, a two-day English Heritage walk from Morville Priory to Shrewsbury Abbey. Upton Cressett is an excellent base for top arts, music and food festivals and touring the medieval market towns of Ludlow, Much Wenlock, Bridgnorth and Shrewsbury, all known as fine dining destinations. Other local attractions include the West Midland Safari Park, the Ironbridge Gorge, Buildwas Abbey, Ludlow and Stokesay castles, the famous Royal Oak at Boscobel House where Charles II hid for the night as he fled for his life after the battle of Worcester in 1651 and the astonishing walks along Wenlock Edge and the Long Mind. At the Chevaliers Estate, you can enjoy the gardens and house with a guided tour, enjoy a delicious home made afternoon tea or if you are lucky there will be a special event taking place in the Dragon Hall or in the grounds. There are three Grade I listed buildings on the estate, including the Norman church in the garden. It is little wonder that the estate has been the location for BBC dramas and period films.

The Cider House is built over two floors offering charming, spacious accommodation. With lovely wide oak flooring, French windows looking out to the gardens and ancient woodland and plenty of beams, the cottage is characterful and enjoys a warm ambience. The living room is a space where you will immediately feel at home and want to snuggle up on the sofa. An open log fireplace sits in the corner to warm you through and a large smart television is provided for your entertainment. The bespoke kitchen is very smart with its Rangemaster Professional oven, large double fridge and stylish green toned cabinetry. Under a high vaulted ceiling, the dining table sits centre stage. From here you can look out to the estate grounds through two giant doors.



One of the bedrooms is downstairs making this property ideal for any guests with mobility issues. This downstairs master bedroom is gorgeous and extremely tasteful with its kingsize slay bed and its chic country styling. This room also features a high vaulted ceiling making it feel very roomy and airy. It boasts a luxury bathroom with a bath and wet room shower with an overhead and handheld shower head. The flooring is non-slip with gorgeous tiles from the National Trust collection based on tiles at Wimpole Hall. Upstairs, the second bedroom enjoys a characterful sloping beamed ceiling, gorgeous red Toile de Joile soft furnishings and a kingsize bed giving it a delightful country cottage feel. The ensuite bathroom offers a bath with an overhead shower.

You will feel very special staying on the estate, enjoying fresh country air and returning to this extremely comfortable cottage.

*\*Please note that while Chevaliers Cider House is listed as sleeping up to 4 adults, we can also accommodate an additional child or teenager on a single bed in the first floor bedroom.*

## Facilities

Cycling • Walking/Hiking Paths • Romantic • Walk to Village • Special Offer • Has Offer • Has Discount • Great Value • Instagrammable • All Bedrooms En-Suite • Ground Floor Bed & Bath • Cottage • Heritage Collection • Country Estate • Wi-Fi/Internet • Rural Location • Smart TV • Working Fireplace/Woodburner • Caretaker/Owner on Site

# Interior & Grounds

## Chevaliers Cider House

### Ground Floor

- Fully fitted granite kitchen with a top and bottom Rangemaster Professional oven and large double fridge
- Sitting room with an open log fire, large smart TV and a sofa and armchairs
- Bedroom with a king size bed looking out of French windows
- Luxury bathroom with both a bath and a wet room style shower with the option of both overhead and handheld shower heads. The floor is non-slip

### First Floor

- Bedroom with a king size bed and single bed
- Bathroom with a bath with stand up shower option and a shower mixer for the bathroom

### Additional Facilities

- Wi-Fi

*\*Please note that while Chevaliers Cider House is listed as sleeping up to 4 adults, we can also accommodate an additional child or teenager on a single bed in the first floor bedroom.*

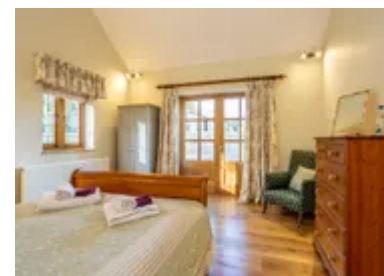


## Location & Local Information

The Cider House enjoys a magical location on the Chevaliers Estate. Set in glorious countryside by the hamlet of Upton Cressett, the cottage is close to Bridgnorth and Much Wenlock. This is gorgeous walking territory including National Trust walks along Wenlock Edge. The cottage is just a short drive from the Severn Valley Steam Railway, the World Heritage Site of Ironbridge, the birthplace of the Industrial revolution and the beautiful market towns of Shrewsbury and Ludlow, both acclaimed national gastro-towns.

Bridgnorth sits high on a sandstone cliff enjoying sensational views of the Severn Valley. There is a High Town and a Low Town, caves, a castle, a cliff railway and a wonderful array of shops, cafes and restaurants. Bordered and divided by Britain's longest river, The Severn, the town is very attractive. King Charles I remarked that the view is 'the finest in my domain' in 1642. The Cliff Railway climbs from the Severn to the High Town and the famous Severn Valley Railway offers a beautiful sixteen mile stretch of riverside line. Bridgnorth was once one of the busiest river ports in Europe but now the Severn is clear, unpolluted and a tranquil haven for anglers, walkers and wildlife. The High Town and the Low Town are linked by seven sets of ancient donkey steps and the Cliff Railway. John Betjeman once said that 'If you approach the High Town by the cliff railway you feel you are being lifted up to heaven'. Opened in 1892, it is the oldest and steepest inland funicular railway, making the journey at least one hundred and fifty times a day.

Ludlow is a fine historic town with a wealth of beautiful Georgian buildings and the dramatic medieval Ludlow Castle, perched on a cliff overlooking the River Teme. The cathedral-like Church of St Lawrence is one of the largest churches in England. There are picturesque lanes sprinkled with antique, book and craft shops. Like some of the other market towns, Ludlow has an excellent reputation for its gastronomy. It hosts farmers markets and is home to many wonderful delicatessens. There are roughly five hundred listed buildings in the town. Broad



Street is probably the finest street. The Grade II listed Feathers Hotel is one of the most photographed buildings in Shropshire. The 1840's Ludlow Assembly Rooms is now a lively arts centre.

Shrewsbury is the birthplace of Charles Darwin. It sits close to the Welsh borders and is one of England's finest medieval market towns. It has over six hundred listed buildings including the castle and the abbey. Quarry Park is lovely and you can enjoy a boat trip on the River Severn. The town hosts many regular events including the famous Shrewsbury Flower Show and the Shropshire County Show.

## Local Amenities

Nearest Airport	<b>Birmingham Airport (82 km)</b>
Nearest Village	<b>Upton Cressett (500 m)</b>
Nearest Town/City	<b>Bridgnorth (7.5 km)</b>
Nearest Restaurant	<b>Punch Bowl (6.4 km)</b>
Nearest Bar/Pub	<b>The Down Inn, (6.4 km)</b>
Nearest Supermarket	<b>Sainsbury's (7.3 km)</b>
Nearest Golf	<b>Bridgnorth Golf Club (9 km)</b>
Nearest Tennis	<b>Bridgnorth Tennis Club (7 km)</b>

## What we love

- The cottage is beautifully presented with gorgeous furnishings and excellent fittings, all under charming beamed ceilings.
- The location on the Chevaliers Estate is amazing. You will feel as though you have escaped all the stresses and strains of everyday life and can enjoy the charms of the estate including delicious afternoon teas, tours and maybe even a family led event.
- Shropshire is wonderful. It is so beautiful and there are many market towns to explore, all of which offer a fantastic dining scene and beautiful views.

## What you should know...

- One of the bedrooms and a bathroom are downstairs, making this a good option for guests with mobility issues.
- The bedroom upstairs has a sloping ceiling so watch your head if you are very tall!
- There are some fabulous walks straight from the cottage.
- The owners offer their in house catering and cannot accept bookings with local catering companies.
- Please note that the property owners live on-site, and will be very happy to help.

# Terms & Conditions

- **Security deposit:** £100 charged to client's credit card by Oliver's Travels as a pre-authorisation at least 2 weeks prior to arrival and refunded two weeks after departure, subject to full inspection.
- **Arrival time:** 4:00 pm
- **Departure time:** 10:00 am
- **Energy costs included?:** Yes, included in the rental price
- **Linen & towels included?:** Yes, included in the rental price
- **Pets welcome?:** A maximum of 2 well-behaved dogs allowed on request at the time of booking. Please note that there will be an additional charge of £30 per dog, per stay
- **Other Ts and Cs:** Please note that the property owners live on-site, and will be very happy to help.
- **Changeover day:** Flexible
- **End of stay cleaning:** Standard changeover clean included in the price. Guests are required to leave the accommodation clean, tidy and in the same condition as on their arrival. Any extra cleaning, laundry, maintenance and/or rubbish disposal required will be charged against the security deposit.
- **Smoking Allowed?:** Smoking & Vaping are not permitted
- **Minimum stay:** Please note that there is a 3-night minimum stay, this may be increased to 5-nights across peak periods
- **Heating costs included?:** Yes, included in the rental price
- **Internet access?:** Yes, Wi-Fi is included in the rental price

Please note that the owners offer their own catering and service staff, that can be enquired at the moment of booking. Bookings with local catering companies are not accepted.