

Quinta Portelinha

Region: Portugal Sleeps: 10

Overview

A countrified and traditional villa located in Minho, Quinta Portelinha enables guests to revel in a stellar selection of incredible views. The exterior of this property is home to a considerable swimming pool, meaning that guests can float aimlessly in the cool water at any point throughout their stay. This pool is also encircled by a large span of expertly manicured grass, allowing guests to sunbathe on the soft lawn or play games together as a family. Moreover, this property is home to a wide variety of attractive outdoor terraces. As a result, guests are encouraged to use these spaces to their full potential, enjoying a range of incredible al fresco dining experiences.

Inside, this property is filled with a unique selection of decors, creating a homely and comforting atmosphere for guests to enjoy. The ground floor and first floor are home to five amazing bedrooms, making this property ideal for those who may find it difficult to climb a lot of stairs. The first two bedrooms both contain a pair of single beds, meaning they are perfect for small children or for couples who prefer to sleep separately. The remaining three bedrooms all contain a luxurious double bed. As such, guests are sure to enjoy a peaceful night's sleep throughout the duration of their stay.

Travelling up to the first floor, this is where you'll find a majority of the main living areas. The lounge area is a deeply communal space, sporting an eclectic lime green sofa with an array of contrasting furnishings. Thus, guests can enjoy the nuances of this off-beat space whilst they catch up on their favourite shows on the modern TV that resides in this space. Moving on to the dining area, this space includes a dark wooden table and a set of matching chairs, helping to build a cohesive and balanced space where guests can enjoy their daily meals as well as each



other's company. The kitchen within this property is truly spectacular, as seen by the collection of white cupboards and sleek black walls. Therefore, guests are free to prepare and serve a wealth of delicious meals in this chic and monochrome area.

Facilities

Wi-Fi/Internet • Special Offer • Has Discount • Great Value • Table Tennis • Rural Location • Indoor Games • Games Room • Private Pool • Ideal for Kids • Ideal for Teens • Coffee Machine • Hairdryer • All Bedrooms En-Suite • Ground Floor Bed & Bath • TV • Working Fireplace/Woodburner • Parking Space • Walking/Hiking Paths • Outstanding Landscapes • Outdoor Pursuit & Activities • Tourist Towns & Villages

Interior & Grounds

The Villa

Surrounded by magnificent grounds and landscape, this farm is a real retreat for those who want to enjoy the countryside and the idyllic scenery provided by the proximity of the mountains, the Lima river and the Viana do Castelo seaside.

Ground Floor

- Bedroom with double bed, access to the garden and en-suite shower room
- Bedroom with double bed, access to the garden and en-suite shower room
- Bedroom with two single beds, access to the garden and en-suite shower room
- Media room with comfortable seating and satellite TV
- Games room with tennis table and access to the garden

First Floor

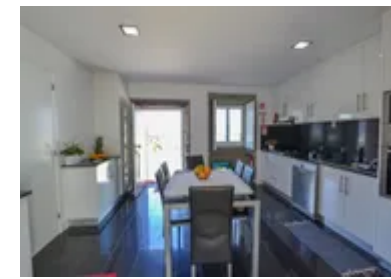
- Ample living room with comfortable seating and access to the garden
- Separated dining area for 10 people with fireplace
- Bedroom with double bed and en-suite shower room
- Bedroom with two single beds and en-suite shower room

Exterior Grounds

- Private swimming pool
- Large terrace and garden area
- Covered terrace
- Various sun loungers
- Outdoor dining
- Garden furniture
- Private parking
- Barbecue

Additional Facilities

- Wi-Fi connection
- Washing machine
- Dishwasher
- Hair dryer

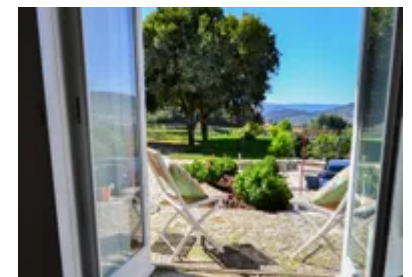
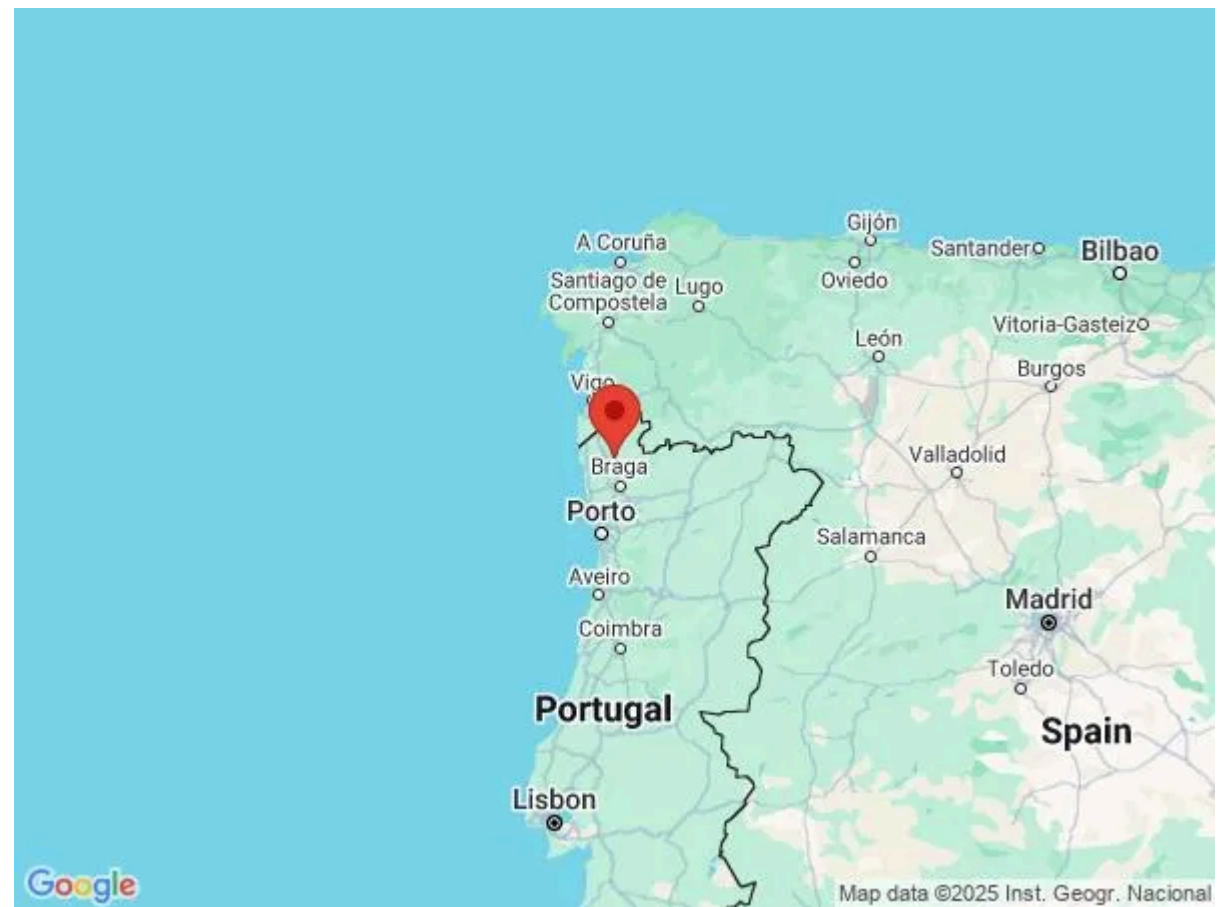


Location & Local Information

Minho has become a very popular destination with avid travellers over the years due to its vibrant assortment of insightful attractions. If you wish to delve into the comprehensive food scene found within this region, Flor de Minho is an ideal establishment to visit. This restaurant is considered to be a fan favourite with both tourists and locals because of its fresh cuisine and amicable atmosphere. A majority of the food is prepared over a high-end grill, meaning that guests can indulge in dishes such as expertly charred turkey steaks and pork tenderloin served with homemade French Fries. Flor de Minho can be found just 40 minutes away and welcomes guests Monday-Saturday from 7:30 am to 10 pm.

The Palace of the Dukes of Braganza is one of the region's most significant tourist attractions and is situated just over half an hour away. This expansive palace was modelled after the typical 15th-century manor houses found throughout France during this time. As such, this building is incredibly decadent and has to be seen to be believed. However, it was not always this way. After the Dukes of Braganza moved to the Palace of Vila Vicosa, the building fell into disarray and was essentially left to rot. In the 1930s, the palace was finally restored, helping to create the amazing landmark we see today. Guests can travel inside the palace and marvel at the wide collection of pristine artefacts that are scattered around the attraction.

If you want to discover more about the incredible wildlife that can be found throughout this region, The Peneda Gerês National Park is an ideal attraction to visit. This amazing park is made up of a collection of 22 rural villages, helping guests to observe the vibrant culture and biodiversity that has helped put Minho on the map. Here, guests can gain a clear view of a collection of rare species like cachena cows, goats, and autochthonous sheep. There is also a vast collection of historical monuments on-site such as the Castle of Castro Laboreiro and The Roman Road. As such, this is a great attraction to visit if you are looking to blend the wonders of history with the



beauty of nature. The Peneda Geres National Park is located just under an hour away.

Local Amenities

Nearest Airport	Porto Airport (90 km)
Nearest Village	Torno (2 km)
Nearest Town/City	Ponte de Lima (12 km)
Nearest Restaurant	Adega do Espeta (3 km)
Nearest Bar/Pub	Nelson Bar (15 km)
Nearest Supermarket	Mercado Carlos Sousa (4 km)
Nearest Beach	Cabedelo Beach (44 km)
Nearest Golf	Axis Golf Course (14 km)
Nearest Tennis	Ponte de Lima Tennis Court (14 km)

What we love

- The ground floor contains an additional seating area for those who would prefer to be separated from the main group
- A games room can also be found on-site, including a chess set and a cards table
- Guests can also enjoy a game of ping pong using the full-sized table tennis unit found on the exterior
- A state-of-the-art barbecue can also be found on the exterior, helping guests to enjoy a plethora of delicious meals whenever they please

What you should know...

- Pets are accepted on this property
- Parking facilities are available for guests to use
- There are no handrails leading into the pool, so children must be supervised

Terms & Conditions

- **Security deposit:** Credit card details are required 2 weeks prior to departure for pre-authorisation.
- **Arrival time:** 4 pm
- **Departure time:** 10 am
- **Energy costs included?:** Yes, included in the rental price.
- **Linen & towels included?:** Yes, included in the rental price.
- **Pets welcome?:** On request only and with prior agreement with the owner.
- **Changeover day:** Flexible.
- **End of stay cleaning available?:** Yes. However, guests are required to leave the accommodation clean, tidy and in the same condition as on their arrival. Any extra cleaning, laundry, maintenance and/or garbage disposal required will be charged against the security deposit.
- **Smoking Allowed?:** Smoking & Vaping are not permitted.
- **Minimum stay:** 7 nights. All other durations on request.
- **Heating costs included?:** Not available on this property.
- **Pool heating charge?:** Not available on this property.
- **Tax:** Tourist Tax included in the rental price.
- **Internet access?:** Wi-Fi internet access included.
- **Pool towels included?:** No.