

Llyn Cottage

Region: United Kingdom **Sleeps:** 10

Overview

The wonderful Llyn Cottage is a single storey, semi-detached holiday home sleeping up to ten guests in four bedrooms. It is nestled in a fabulous spot in the tranquil village of Sarn Meyllteyrn in a small valley, just over eight miles from Pwllheli and close to Aberdaron and Abersoch. The River Soch runs through the village on its way to Abersoch. The Llyn Peninsula is known as 'Snowdon's arm'. It is a wildly beautiful peninsula with a rich culture and heritage, traditional farmsteads, picturesque ports, stunning beaches and dramatic sea cliffs. Little wonder that this magnificent coast is a protected Area of Outstanding Natural Beauty. You can enjoy some fabulous walks on the Wales Coast Path.

Interior designers have waved their magic wands over Llyn Cottage ensuring that guests enjoy a wonderful blend of vintage and modern furnishings, a modern, calm colour palette and lovely characterful features such as exposed stone walls. It comes with a fabulous garden for relaxation, alfresco dining and play. There is shared access to a field with children's play equipment. For further relaxation and a spot of pampering, guests enjoy a sauna.

Llyn Cottage boasts a wonderful open plan living space with a fantastic oak kitchen. The quality country kitchen offers excellent wooden cabinetry, granite worktops, two large ovens and a large induction hob. There are other top-of-the-range appliances that will delight the chefs in your group. The living area is elegant and smart with its stone feature wall, a wood burning stove for chilly evenings, a Smart television and two comfortable sofas where you can cosy up with Netflix. Its high, open beamed ceiling creates a very spacious feel. Underfloor heating will keep your toes lovely and toasty during the colder months. Doors open to the front patio breakfast area. The conservatory offers a second living space with fabulous



views of the Rhiw Mountain. It is a great spot for a cup of tea and the Sunday newspapers. Doors open from the conservatory to the back private garden.

The master bedroom suite boasts a super kingsize four poster bed which is beautifully adorned with crisp cottons and lovely soft furnishings. The room also offers a spa bath, a conservatory sitting area with a television and an ensuite shower room. You may have to draw straws for this bedroom! The second bedroom is a delightful family room with a kingsize bed and a set of full size bunk beds. The third bedroom offers flexible sleeping with a super kingsize bed that can be set up as twin beds. The final also offers a zip and link super kingsize bed that can be set up as twins plus it boasts an ensuite wet room. The family bathroom enjoys a bath and a steam shower cubicle. Its great. For an additional treat, guests can head to the sauna.

Llyn Cottage is pet friendly and you are welcome to take two furry friends to share your holiday. Outside, you will enjoy a private garden, a barbecue and alfresco dining. The adventure play area will keep little ones happy and the fields will keep the dogs happy.

Facilities

Wi-Fi/Internet • Washing Machine • Golf Nearby • TV • Ideal for Xmas/NY
• Cycling • Watersports • Horse Riding • Walking/Hiking Paths •
Romantic • Ground Floor Bed & Bath • Rural Location • Great Value •
Quirky (Unique) • Cots (Cribs) • DVD • Instagrammable • Cottage • Ideal
for Babies & Toddlers • Ideal for Kids • Ideal for Teens • Pets on Request •
Dishwasher • Sauna/Steam • Table Football • Working
Fireplace/Woodburner • Heating • High Chair(s) • Fenced Grounds •
Parking Space • Outstanding Landscapes

Interior & Grounds

Ground Floor

- Open plan kitchen / living room: oak kitchen with granite worktops, two large single ovens and large induction hob, built in fridge, dishwasher and microwave, large dining table, comfortable leather sofas with exposed stone wall and log burner, and large flat screen TV and DVD player.
- Conservatory with fantastic views of Rhiw mountain: tiled, heated floor and a 2nd TV. Door opening out to private garden at rear of cottage with outdoor furniture and gas BBQ
- Sauna: Infrared sauna cubicle with tiled floor in room
- Bedroom 1: Super-king 4-poster bed and spa bath in corner of bedroom, opening out to a conservatory sitting area with TV. Ensuite shower room
- Bedroom 2: Family bedroom with 1 king plus 1 full size bunk bed
- Bedroom 3: Superking bed (option to be made into 2 twin beds on request)
- Bedroom 4: Superking bed (option to be made into 2 twin beds on request) and an en-suite level entry wet room
- Family bathroom: bath, steam-shower cubicle, basin, toilet and tiled floor
- Utility room: automatic washing machine, tumble dryer, freezer, coat and boot space. Boiler for underfloor heating

Garden

- Breakfast patio to the front of the cottage with picnic benches
- Small communal grass area
- Private garden area with BBQ and outside dining furniture at the rear
- Private entrance and parking
- Large communal playing field with climbing frame and football goal



Location & Local Information

Lovers of the outdoors will adore this wonderfully peaceful location on the Llyn Peninsula. The coast is a protected Area of Outstanding Natural Beauty.

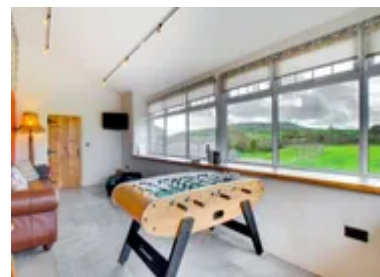
Not far from the cottage, Aberdaron is Land's End at its most idyllic. This historic fishing village was the last stop for pilgrims on the way to Ynys Enlli and Bardsey Island, the 'Isle of 20000 Saints' which is a National Nature Reserve famous for its birdlife. You can visit the National Trust's new Porth y Swnt centre for an insight into the peninsula's special landscapes, seascapes and rich cultural heritage. You will be blown away by the breathtaking coastal views from the Mynydd Mawr headland.

Abersoch is a very pretty seaside resort with sailing and watersports. It boasts fine sandy beaches, a lovely sheltered harbour, a wonderful bistro life and good attractions including pony trekking, boat trips and a delightful craft centre.

Another lovely seaside village is Llanbedrog. It boasts a lovely line of colourful beach huts and a superb beach. You will be getting your cameras out! You will discover Oriel Plas Glyn-y-Weddw, a wonderful arts centre and gallery. You also need be camera ready at Porthdinllaen, the much photographed coastal hamlet brimming with quaint houses above a stunning half moon of golden sand. There is a lovely characterful waterfront pub. The village and beach are owned by the National Trust and access is by foot only. Next to Porthdinllaen on the north coast you will find Nefyn with its maritime museum, pretty harbour and a sweeping crescent of sand. Its headland golf course is incredible, not for the faint hearted.

The peninsula's capital Pwllheli is a very busy seaside resort and busy market town. It boasts a popular sailing and watersports centre, a fantastic marina, art galleries and fantastic shops and restaurants.

If you want to head inland, Llithfaen is a quaint village set in



a fascinating landscape. On Yr Eifl mountains you will find Tre'r Ceiri, an astonishingly well-preserved prehistoric village which was occupied until about two thousand years ago. Nearby is the Welsh Language and Heritage Centre, Nant Gwrtheyrn.

Local Amenities

Nearest Airport	Anglesey Airport (85 km)
Nearest Town/City	Pwllheli (18 km)
Nearest Village	Sarn Meyllteyrn (0.8 km)
Nearest Restaurant	Ty Newydd Sarn (0.6 km)
Nearest Shop	Post Tudweiliog (6.3 km)
Nearest Golf	Clwb Golff Nefyn Golf Club (13 km)
Nearest Beach	Traeth Penllech (7.4 km)

What we love

- Llyn Cottage is beautifully appointed. It is smart, homely and very comfortable
- The garden is lovely and the views even better. There is a lovely space for alfresco dining and plenty of space and equipment for children to play
- The location is amazing. You will discover sensational beaches, beautiful countryside and a fascinating history

What you should know...

- Please be aware that the mobile signal in this area can be patchy though you can make WhatsApp calls using the house wifi
- You are very welcome to take two pets along to enjoy this fabulous holiday
- Llyn Cottage is semi detached. Guests staying in the adjoining cottage can use the field with the play equipment too
- If you would like the super kingsize beds set up as twins please let us know in advance

Terms & Conditions

- **Security deposit:** No security deposit is required for booking this property
- **Arrival time:** Check-in 4.00 p.m.
- **Departure time:** Check-out 10.00 a.m.
- **Energy costs included?:** Yes, included in the rental price.
- **Linen & towels included?:** Yes, included in the rental price.
- **Pets welcome?:** Yes. A maximum of 2 well-behaved dogs are allowed on a request basis. There will be an additional charge of £50 per dog per stay. Dog breeds must be stated at the time of booking.
- **Changeover day:** Friday.
- **End of stay cleaning available?:** Yes. However, guests are required to leave the accommodation clean, tidy and in the same condition as on their arrival. Any extra cleaning, laundry, maintenance and/or rubbish disposal required will be charged against the security deposit.
- **Smoking Allowed?:** Smoking & Vaping are not permitted.
- **Minimum stay:** 3 nights.
- **Heating costs included?:** Yes, included in the rental price.
- **Internet access?:** Wi-Fi internet access included.