

# Whistling Sands Cottage

Region: Snowdonia    Sleeps: 4

---

## Overview

You would be forgiven for thinking you are staying in a boutique hotel when you stay at the beautiful Whistling Sands Cottage. Brimming with special touches that define luxury, this magical, beautifully presented barn will definitely send you home with heavenly holiday memories. With two blissful bedrooms, gorgeous, cavernous living space and stunning views, Whistling Sands Cottage is the perfect abode for a spot of switch off. Without a doubt you will relish in the barn's beauty where there is character and charm in abundance together with tasteful, sumptuous furnishings throughout. You will be thinking how you can create this perfect picture back home.

Whistling Sands Cottage enjoys a fabulous location at the far end of the wonderfully scenic Llyn Peninsula. Rugged cliffs, secret sandy coves, and collages of blue where the big skies meet the sea all offer a world of nature. The Llyn Peninsula is known as 'Snowdon's arm', a wildly beautiful peninsula with a rich culture and heritage, traditional farmsteads, little ports, stunning beaches, and dramatic sea cliffs. Little wonder that this magnificent coast is a protected Area of Outstanding Natural Beauty. The National Trust's Whistling Sands, otherwise known as Porthoer Beach, is less than one and half miles from the cottage and the glorious Wales Coast Path is within a mile. The picturesque seaside village of Aberdaron is only three and a half miles away, while Morfa Nefyn is ten and the wonderful Abersoch is eleven miles away. The lovely Aberdaron enjoys charming pubs, restaurants, and shops. Within very easy reach is the sacred Bardsey Island.

Whistling Sands Cottage offers the perfect luxury getaway for four guests and one furry friend. Sprinkled with original features and plenty of windows to let in the sparkling Welsh light, you will be mesmerised by the main living room. With a high vaulted ceiling, elegant lofty beams, and



the odd splash of stone to remind you of the barn's history, you will relax with stylish, modern furnishings and natural colour palettes. A modern wood burning stove sits in the corner of the room offering a crackling atmosphere while the two comfy sofas offer a warm welcome. You can glide across the natural wood floor with its underfloor heating to the stylish kitchen which comes with all mod cons, a beautiful ceiling and a charming country dining table and chairs. You will notice vivid colour splashes and floral hints, all adding to the inviting ambience.

The cottage boasts two boutique hotel style bedrooms with gorgeous fabrics and the crispest of cottons on the beds. The master offers a lavish king-size bed, gorgeous views and a sleek, ultra-modern bathroom in stone, ceramic, and chrome where you can relax and sooth your soul. A wall-mounted television makes for long lazy lie-ins in this luxurious nest. The second bedroom offers gorgeous twin beds with an eye-catching feature headboard. Again, the room features luxury soft furnishings, a television for your entertainment and a gorgeous ensuite bathroom with a walk-in shower. The property is surrounded by a giant patio and a lush lawn where you can enjoy the Welsh sunshine.

## Facilities

Wi-Fi/Internet • Golf Nearby • Beach Nearby • Cots (Cribs) • Rural Location • Cottage • Ideal for Babies & Toddlers • Ideal for Kids • Ideal for Teens • Pets on Request • Washing Machine • Tumble Dryer • Dishwasher • Hairdryer • Ground Floor Bed & Bath • TV • Working Fireplace/Woodburner • Heating • High Chair(s) • Parking Space • Seaview • Walking/Hiking Paths • Cycling • Horse Riding • Outstanding Landscapes • Outdoor Pursuit & Activities

# Interior & Grounds

## The Barn

### Ground Floor

Spacious, open plan living area consisting of:

- Kitchen fully equipped kitchen including a fan oven and hob, fridge freezer, washer / dryer and dishwasher
- Living area with sofas in front of a log burner
- Dining area with a stylish table with chairs for 4 guests
- Bedroom with a king-size bed and ensuite entrance to bathroom with a bath and shower above
- Bedroom with two full sized single beds and an ensuite with a walk-in shower

### Outdoor Grounds

- Large enclosed patio and lawn with extensive views of the surrounding countryside and down to the sea
- Garden furniture included and BBQ set on request
- Offroad parking space

### Additional Facilities

- TV
- Welcome pack includes tea and coffee, sugar, milk and cake
- Logs supplied for the log burner
- Wi-Fi
- Travel cot and high chair provided on request
- Two hairdryers





## Location & Local Information

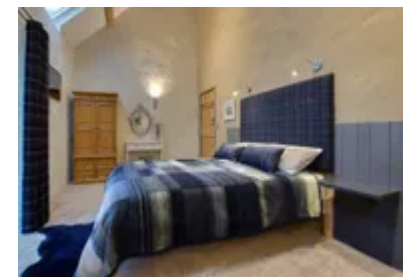
Whistling Sands Cottage enjoys an idyllic location at the far end of the glorious Llyn Peninsula. It sits within a mile of the Wales Coast Path, within one and a half miles of the sensational Whistling Sands Beach where the sand really does whistle and within a short drive of Abedaron. The National Trust beach enjoys a beach side cafe and wonderful sand.

Lovers of the outdoors will adore this wonderful location on the Llyn Peninsula. The coast is a protected Area of Outstanding Natural Beauty.

Aberdaron is Land's End at its most idyllic. This historic fishing village was the last stop for pilgrims on the way to Ynys Enlli, Bardsey Island, the 'Isle of 20000 Saints' which is a National Nature Reserve famous for its birdlife. Boat trips go from nearby Porth Neudwy to the wildlife haven. You can visit the National Trust's new Porth y Swnt centre for an insight into the peninsula's special landscapes, seascapes, and rich cultural heritage. You will be blown away by the breathtaking coastal views from the Mynydd Mawr headland. There is plenty to explore from Aberdaron including sea caves, rock pools and the coast path. Windsurfing, sailing, and kayaking are all popular. Aberdaron is sprinkled with cosy cafes, restaurants and boasts an impressive sailing club. The village hosts an annual sailing regatta, and its coastal heritage is celebrated at the popular Llyn Coastal Festival.

Abersoch is a gorgeous seaside resort with sailing and watersports. It boasts fine beaches, a lovely, sheltered harbour, a buzzy bistro life and good attractions including pony trekking, boat trips and a delightful craft centre.

Another lovely seaside village is Llanbedrog. It has an Instagram worthy photogenic line of colourful beach huts and a superb beach. You will also find Oriel Plas Glyn-y-Weddw, a wonderful arts centre and gallery. You also need be camera ready at Porthdinllaen, the much-photographed coastal hamlet brimming with quaint houses above a stunning half-moon of golden sand. There



is a lovely characterful waterfront pub. The village and beach are owned by the National Trust and access is by foot only. Next to Porthdinllaen on the north coast you will find Nefyn with its maritime museum, pretty harbour, and a sweeping crescent of sand. Its headland golf course is incredible, not for the faint hearted.

The peninsula’s capital Pwllheli is a very busy seaside resort and busy market town. It boasts a popular sailing and watersports centre, a fantastic marina, art galleries and fantastic shops and restaurants.

If you want to head inland, Llithfaen is a quaint village set in a fascinating landscape. On Yr Eifl mountains you will find Tre’r Ceiri, an astonishingly well-preserved prehistoric village which was occupied until about 2000 years ago. Nearby is the Welsh Language and Heritage Centre, Nant Gwrtheyrn.

Other popular attractions and activities are fishing, horse riding, golf and Glasfryn Parc where you can enjoy go-karting, ten-pin bowling, archery, and other activities. Plas Glyn-y-Weddw is a magnificent manor house with galleries, beautiful gardens, and a lovely tearoom with sea views. Within fifteen miles, you can enjoy horse rides and treks at Pen Llyn Stud and Riding Centre, the Llanbedrog Riding Stables, and the Cilan Riding Centre at Abersoch. Golf can be played at the Nefyn and District Golf Club, the Abersoch Golf Club and the Llyn Golf Centre and Pen-y-Berth.

Local Amenities

Nearest Airport	Liverpool John Lennon Airport (192 km)
Nearest Train Station	Pwllheli Station (23.6 km)
Nearest Village	Aberdaron (6 km)
Nearest Town/City	Pwllheli (23.6 km)
Nearest Restaurant	The Cove Abersoch (18.8 km)

Nearest Bar/Pub	<b>Tŷ Newydd Sarn</b> (7.2 km)
Nearest Supermarket	<b>SPAR</b> (6 km)
Nearest Beach	<b>Porth Lago</b> (1.4 km)
Nearest Golf	<b>Abersoch Golf Club</b> (18.8 km)
Nearest Tennis	<b>Criccieth Tennis Club</b> (37 km)

## What we love

- The styling of this gorgeous barn is absolutely stunning. With wonderful calm colour palettes, attractive furnishings, a fantastic blend of contemporary and ancient features and many special touches, you will feel very spoiled!
- The location of this wonderful holiday home is just brilliant, so close to the National Trust wonder Whistling Sands Beach and the coastal path
- The barn comes with two boutique style bedrooms, both with exquisite ensuite bathrooms

## What you should know...

- You are very welcome to take one pet along to enjoy this fabulous holiday
- You will definitely need a car to explore the Llyn Peninsula
- Whistling Sands Cottage is built on one level so is ideal for guests with mobility issues
- If you have friends that might like to join you on your holiday, we also feature the beautiful Whistling Sands Place so you could book that too!

# Terms & Conditions

- **Security deposit:** No security deposit is required for booking this property
- **Arrival time:** 4:00 pm
- **Departure time:** 10:00 am
- **Energy costs included?:** Yes, included in the rental price
- **Linen & towels included?:** Yes, included in the rental price
- **Pets welcome?:** A maximum of one well-behaved dog is allowed on a request basis. There will be an additional charge of £50 per dog per stay. Dog breeds must be stated at the time of booking
- **Changeover day:** Monday or Friday
- **End of stay cleaning available?:** Yes. However, guests are required to leave the accommodation clean, tidy and in the same condition as on their arrival. Any extra cleaning, laundry, maintenance and/or rubbish disposal required will be charged against the security deposit
- **Smoking Allowed?:** Smoking & Vaping are not permitted
- **Minimum stay:** 7 nights. All other durations on request
- **Heating costs included?:** Yes, included in the rental price
- **Internet access?:** Wi-Fi internet access included