

Apartment Ibex I

Region: 3 Valleys **Sleeps:** 8

Overview

The French Alps conjure images of pure majesty. Whether you fondly remember James Bond skiing the snowy slopes or picture quaint cabins with warming cups of cocoa and toasted marshmallows American summer camp style, a sense of romance, adrenaline and exhilaration permeates the landscape.

Located in the Rond-point des Pistes area of Méribel, the Ibex Apartment and Park residence and wellness area is one of the finest locations in the resort. A mere 50 meters from the ski room, you can also easily and effortlessly access the shops and services, including ski pass offices, ESF and the Pioupiou Club.

The apartment is grand and magnificent in stature from a distance whilst retaining an authentic French charm. The wooden structure, so often snow-capped, dares to stand out against the daunting and ethereal beauty of the French Alps.

Apartment Ibex I is a vast 129m² apartment located on the third floor. Inside, you'll find all the chic alpine style you could want in an immediately warm and welcoming atmosphere. Complete with a kitchen, dining area and living room, there's plenty of sharable space to enjoy downloading after your ski sessions. The piece de resistance is the stunning fireplace – something every apartment isn't complete without. The large windows and big terrace invite stunning panoramas. You'll enjoy looking out at the stars and snowy peaks beyond.

The apartment is ideal for four adults and four children complete with two double rooms with an en suite and one room containing two sets of bunk beds.

The residence contains a spa where you can enjoy a revitalising sauna or authentic hammam experience. If you want to build stealth and stamina for the slopes, you can make use of the gym.

You'll be granted two parking spaces and two ski lockers to store your valuables. It's the little things and tiny touches that make a big difference. Decorated with exquisite artwork, tall ceilings with lights positioned like stars, a plush sofa, and wooden panelling, you'll immediately feel at home in this enchanting environment.

You can also enjoy your own boots heater, an array of board games for those calming nights in and a balcony with stellar views.

Whether travelling with family or friends, be prepared for all the skiing you could wish for, as well as cosy cabin nights. Enjoy dinners and a glass of wine at the long table with the fire crackling in the background, and get ready to explore the bountiful beauty of the area.



The Méribel logo is a stamp of renown and prestige which carries across international waters. You can rest assured that you'll experience world-class skiing, sublime and authentic architecture and all the pampering you desire.

Facilities

Rural Location • Lakes and Mountains • Lift • Wi-Fi/Internet • Indoor Games • Cots (Cribs) • Gym/Fitness Room • Modern • Chalet Apartment • Wellness • Self-Catered • Ideal for Babies & Toddlers • Ideal for Kids • Ideal for Teens • Walk to Restaurant • Washing Machine • Tumble Dryer • Dishwasher • Microwave • Coffee Machine • TV • Sauna/Steam • Working Fireplace/Woodburner • Heating • High Chair(s) • Parking Space • Skiing • Outstanding Landscapes • Outdoor Pursuit & Activities

Interior & Grounds

The Apartment:

Interiors

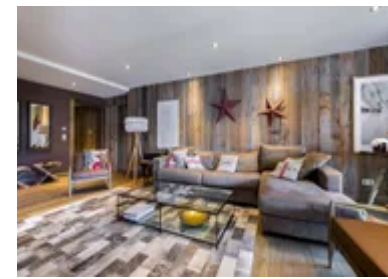
- Dining area
- Open and fully-fitted kitchen
- TV lounge
- Lobby
- Two double bedrooms
- Children's bedroom
- Laundry room
- Separate WC
- Independent bathroom

Outside Grounds

- Terrace

Additional Facilities

- TV
- Wifi
- Bathroom products
- Board games
- Boots heater
- Elevator
- Outdoor furniture
- Parking space
- Ski locker
- Coffee machine
- Microwave
- Fridge
- Freezer
- Raclette appliances
- Vacuum
- Nespresso coffee machine
- Blender
- Kitchen exhaust hood
- Kettle
- Toaster
- Induction hobs
- Dishwasher
- Washing machine
- Dryer



- Oven
- Baby cot (on request)
- Highchair (on request)
- Access to leisure areas (sauna, hammam, fitness room)

Location & Local Information

The French Alps are the portions of France's vast Alps mountain range. They dominate the Auvergne-Rhone-Alpes and Provence-Alpes-Cote d'Azur regions of the country. You've probably seen them immortalised in films – a place known for majesty, magic, glamour and adrenaline, where visitors seek cosiness and adventure in equal measure.

Méribel is known as the world's largest ski area at 600 km and contains over 300 marked runs, 28 fun runs, 160 ski lifts and 62,000 metres of cumulative vertical drops.

It's very much known as a skier's playground, making it ideal for hardcore veterans and newbies alike and everything in between, making it a great place to test your metal or get started.

Located in the Rond-point des Pistes area of Méribel, the residence is renowned as one the most luxurious in the resort. Its location is mere steps from shops and services, such as the ski pass offices, ESF and Pioupiou Club, and 50 meters from the ski room.

The Méribel resort signals sophistication, grandeur and charm and is internationally acclaimed for its amazing services, phenomenal skiing opportunities and blissful architecture. The resort is located at the very epicentre of Les Trois Vallées.

The area spans three interlinked valleys but with over half of the pistes coloured green or blue, the majority of the skiing opportunities are ideal for beginnings wanting to cut their teeth (metaphorically of course) on the slopes.

Around 85% of the skiing area is situated at over 1,800 metres in altitude with a northerly exposure. This ensures snow throughout the entire ski season. You're essentially visiting a ski safari on the three valleys, and you'll be able to make your way between the valleys eleven resorts on skis alone if you wish to include Courchevel, Bride-les-Bains, Les Menuires, Saint-Martin-de-Belleville, Val Thorens and Orelle.

Wonderfully the area has a lively, warm family atmosphere, so it's ideal if travelling with your loved ones. You can enjoy Front de Neige in La Chaudanne, the festive location of Rond-point des Pistes with its range of terraces. Make sure you pay a visit to the renowned Folie Douce. You can also take a trip to the Olympic Park, complete with a swimming pool, ice rink, spa and gym.

At day you can take in the thick, churning snow and watch the area light up like a Christmas snow globe at night. Both have their charm and the atmosphere is truly unbeatable.



Local Amenities

Nearest Airport	Geneva Airport (184 km)
-----------------	----------------------------

Nearest Airport 2	Lyon Airport (182 km)
Nearest Town/City	Méribel (3.5 km)
Nearest Restaurant	Lilie (200 m)
Nearest Bar/Pub	La Taverne Bar & Restaurant (3.5 km)
Nearest Piste	Fôret (50 m)
Nearest Supermarket	SPAR Supermarché (3.4 km)
Nearest Ski Lift	Adret (400 m)
Nearest Ski Hire	Olympic Sports Meribel (180 m)

What we love

- This is a beginners paradise with over half of the pistes rated green or blue. Being brand new to skiing, I wanted to see what all the fuss is about. Prepare to be captivated. If the slopes prove challenging, you can kick back in one of the 160 ski lifts which I definitely enjoyed too!
- Picturesque by day and dramatic by night, you can experience two very different types of beauty here, both equally bewitching. I felt like I was living in a Hallmark film.
- Enjoying dinner at our apartment with the fire behind us was so dreamy. We'd leave our boots to heat up for the morning and fall into sleep so easily after using our muscles all day long.
- We loved taking a stroll around Méribel centre. It truly felt like visiting Christmas.

What you should know...

- As many of the ski slopes are at altitude, you'll want to build your exposure gradually to prevent altitude sickness. You can also ask your GP for a prescription to hopefully prevent or minimise the impact of altitude sickness. Not everyone suffers with it, but it's impossible to know until you're at altitude. Fortunately, it only takes a few days to adjust.
- Look out for the flags, especially if you're beginning. Green and blue mark beginners pistes. Those marked red should only be attempted by very experienced skiers.
- It goes without saying but make sure you pack accordingly. You'll need to keep warm but you can also build up quite a sweat out on the slopes. Make sure you use your boot rack overnight so you've got toasty toes for the morning.
- Don't underestimate the impact of the sun. it's advisable to wear sunscreen especially on your face.

Terms & Conditions

- **Security deposit:** Secure link sent to the client's email to fill in the details of the client's bank card online 2 weeks before the arrival for the amount of €1500. Funds won't be taken or blocked on the credit card in this case.
- **Arrival time:** Check-in 5.00 PM
- **Departure time:** Check-out 10.00 AM
- **Energy costs included?:** Yes, included in the rental price
- **Linen & towels included?:** Yes, included in the rental price
- **Pets welcome?:** Not allowed
- **Changeover day:** Saturday
- **End of stay cleaning available?:** Yes (except kitchen). However, guests are required to leave the accommodation clean, tidy and in the same condition as on their arrival. Any extra cleaning, laundry, maintenance and/or garbage disposal required will be charged against the security deposit
- **Smoking Allowed?:** Smoking & Vaping are not permitted
- **Minimum stay:** 7 nights
- **Heating costs included?:** Yes, included in the rental price
- **Tax:** French Visitors Tax payable alongside balance (typically costs €1-€5 per adult per night- please enquire if exact amount is required)
- **Internet access?:** Wi-Fi internet access included