

# Chalet Fouine

Region: 3 Valleys Sleeps: 10

---

## Overview

Chalet Fouine delivers an impressive sense of space and comfort across 340 square metres, set in a quiet hamlet with quick access to the Olympe gondola. It works perfectly for families and groups who want an easy connection to Méribel's world class ski area while enjoying a private and well equipped mountain home. The chalet is spread across multiple levels, giving each bedroom good privacy. Most rooms feature balconies and several offer flexible double or twin setups, which makes planning sleeping arrangements simple. The master suite stands apart with a generous footprint, a large bed and its own balcony.

Days begin in the bright breakfast area before you head for the slopes. The gondola is only 250 metres away and connects you straight into the wider Three Valleys. After skiing, the chalet's leisure level becomes the focus. There is a bar for après drinks, a lounge with a TV and a south facing outdoor jacuzzi where you can unwind with wide open views. The main living room on the upper floor is warm and inviting with a central fireplace and plenty of room to relax. The semi open kitchen is well equipped with practical appliances including induction hobs, a Nespresso coffee machine and a full range of cookware.

Chalet Fouine balances style with function. Storage is excellent with a dedicated ski room, boot heaters and a garage. Adults and children alike will adore the mix of entertainment spaces ensuring everyone has room to spread out. It is a strong choice for groups who want comfort, convenience and straightforward access to some of the best skiing in the Alps.



## Facilities

Skiing • Ski Lift Nearby • Boot Heaters • Ski Room • Mountain View • Walk To Slopes • Wellness • Ski Chalet • Paragliding • Self-Catered • Walking/Hiking Paths • Walk to Village • Ideal for Kids • Cots (Cribs) • Ideal for Teens • All Bedrooms En-Suite • Instagrammable • Modern • Ground Floor Bed & Bath • <1hr to Airport • Parking Space • Walk to Restaurant • Wi-Fi/Internet • Lakes and Mountains • Washing Machine • Outstanding Landscapes • Coffee Machine • Hairdryer • Outdoor Pursuit & Activities • Tourist Towns & Villages • TV • Pool/Snooker • Laptop Friendly Workspace • Indoor Games • Hot Tub • Tumble Dryer • Dishwasher • Microwave • Safety Deposit Box • Smart TV • Working Fireplace/Woodburner • Heating • Conference Facilities • Board games • Bathroom Toiletries • Ideal for Babies & Toddlers • High Chair(s)

# Interior & Grounds

## The Chalet

### Lower Ground

- Living area with seating and dining
- Semi-open kitchen, well-equipped
- TV lounge
- Bar
- Bedroom 1: Twin beds (90×200) with an ensuite bathroom with shower
- Laundry room
- Ski room: Boot heaters, storage
- Lobby

### Ground Floor

- Bedroom 2: Double or twin beds (split option) with a balcony, ensuite bathroom with bathtub
- Bedroom 3: Double or twin beds (split option) with a balcony, ensuite bathroom with bathtub (double basin)
- Bedroom 4: Double bed (160×200) with an ensuite bathroom with shower
- Separate WC
- Garage / parking

### First Floor

- Living room: Sofa seating, TV, central fireplace, access to terrace
- Dining area: Table with seating for the group
- Breakfast area: Additional dining space
- Semi open layout kitchen

### Second Floor

- Master Bedroom: Double bed (180×200) with a balcony, ensuite bathroom with shower
- Independent bathroom: Bathtub
- Office space

### Outdoor Grounds

- South facing terrace
- Parking space/garage
- Outdoor jacuzzi



**Additional Facilities**

- Billiards table
- Board games
- Central fire place
- TV
- Wi-Fi
- Apple TV
- SONOS Speaker
- Dishwasher
- Refrigerator
- Freezer
- Baby cot & Highchair (upon request, subject to an extra charge)
- Washing machine
- Tumble dryer
- Fondue and raclette appliances

## Location & Local Information

Chalet Fouine sits in a peaceful corner of Méribel with quick access to the Olympe gondola, placing you within easy reach of the vast Three Valleys ski domain. The lift is only 250 metres from the chalet and brings you directly into Méribel Centre, where you can link into the Saulire, Tournète and Mont Vallon sectors. This makes it a practical base for skiers who want efficient connections and varied terrain without the busier atmosphere of the main resort hub.

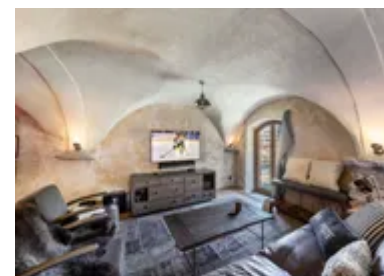
The area around the chalet is quiet but well positioned. You are close enough to reach shops, restaurants and ski hire with little effort while still benefiting from a calmer residential setting. Confident skiers can take advantage of the nearby slopes and enjoy straightforward routes back toward the gondola. Non skiers will find plenty around the valley too with walking paths, cafés and access to the Olympic Park in Méribel Centre for indoor activities.

After a day on the mountain, returning to the chalet is simple and stress free. The location works especially well for mixed groups who want both convenience and a more private base, with the added bonus of impressive views from the south facing terrace.



## Local Amenities

Nearest Airport	<b>Chambéry</b> (99 km)
Nearest Airport	<b>Geneva</b> (134 km)
Nearest Bar/Pub	<b>Sullys Bar Méribel</b> (1.6 km)
Nearest Piste	<b>Raffort</b> (260 m)
Nearest Restaurant	<b>Restaurant Le MARTAGON</b> (150 m)
Nearest Ski Hire	<b>Slidecandy</b> (300 m)



Nearest Ski Lift	<b>Olympe 3</b> (260 m)
Nearest Supermarket	<b>SPAR (Méribel Village)</b> (1.7 km)
Nearest Town/City	<b>Méribel Centre</b> (1.8 km)

## What we love

- The south facing terrace with wide open views across the valley are just what you want to see on your alpine getaway
- A quick 250m walk to the Olympe 3 gondola is all that it takes to access Méribel Centre
- One of the most striking features of the chalet is its outdoor jacuzzi, flanked by gorgeous mountain views
- With an exclusive bar, billiards table and two leisure areas, Chalet Fouine promises luxury Alpine living
- Guests staying in the winter will be please to know that firewood is included so that you can get cosy in the evening recounting stories for the day's escapades.

## What you should know...

- Children need to be monitored at all times when using the leisure facilities
- The chalet is set over several levels which may not suit guests with mobility concerns
- Please note that the chalet can only accomdate 10 guests due to the new room layout.
- When accessing the Jacuzzi, please take care in colder weather as to not slip on any ice surrounding the area.

# Terms & Conditions

- **Security deposit:** Secure link sent to the client's email to fill in the details of the client's bank card online 2 weeks before the arrival for the amount of €5000. This is in the form of a card authorisation, funds are not cashed
- **Arrival time:** Check-in 5:00 p.m.
- **Departure time:** Check-out 10:00 a.m.
- **Energy costs included?:** Yes, included in the rental price.
- **Linen & towels included?:** Yes, included in the rental price.
- **Pets welcome?:** Not allowed.
- **Other Ts and Cs:** Please note that rental of a cot and highchair is at an extra cost paid directly to the owner: Cot: 40€ per week Highchair: 30€ per week
- **Changeover day:** Saturday.
- **End of stay cleaning available?:** Yes, included in the rental price along with two partial cleans during your stay. However, guests are required to leave the accommodation clean, tidy and in the same condition as on their arrival. Any extra cleaning, laundry, maintenance and/or rubbish disposal required will be charged against the security deposit.
- **Smoking Allowed?:** Smoking & Vaping are not permitted.
- **Minimum stay:** 7 nights. All other durations on request.
- **Heating costs included?:** Yes, included in the rental price.
- **Tax:** French Visitors Tax payable alongside balance (typically costs €1-€5 per adult per night- please enquire if exact amount is required).
- **Internet access?:** W-Fi internet access is included.