

Apartment Elisa

Region: Veneto **Sleeps:** 6

Overview

Apartment Elisa is an elegant four-bedroom retreat on the fourth floor, set in the heart of St Mark's Square with panoramic views of the Basilica, Campanile and bronze horses. Sleeping up to six guests, the apartment combines light-filled interiors with refined styling, featuring parquet floors, a south-facing lounge and a furnished terrace ideal for morning coffee or evening aperitifs.

Inside, there's a well-equipped galley kitchen, a master bedroom opening onto the terrace, a second double with ensuite shower, and two charming single bedrooms, one with its own ensuite, the other served by a separate bathroom with bathtub. A cosy library nook, TV area and dedicated laundry room add practical touches, making it a superb choice for families or friends looking to enjoy an authentic Venetian stay with all the comforts of home.

Facilities

Air-Con • Wine Tasting • Washing Machine • TV • City Homes & Apartments • Coffee Machine • Hairdryer • Boat Trips • Historical Sites • Wi-Fi/Internet • Lift • Easy By Train • Ideal for Kids • Ideal for Teens • Walk to Restaurant • <1hr to Airport • Tumble Dryer • Dishwasher • Microwave • Heating • Outdoor Pursuit & Activities • Tourist Towns & Villages



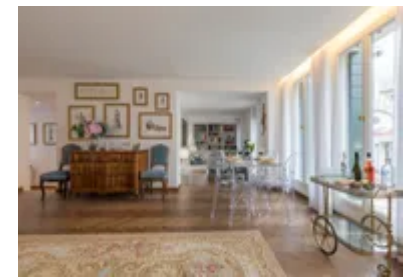
Interior & Grounds

Interior

- Sitting / dining room with comfortable seating
- Library / relaxation area with a sofa and TV
- Modern galley-style kitchen - well-equipped
- Master bedroom with a double bed
- Bedroom with double bed and an en-suite bathroom with shower
- Two single bedrooms, one with an en-suite bathroom with shower
- Bathroom with a bathtub
- A laundry room with combined washing machine/dryer

Additional Facilities

- Air conditioning
- Wi-Fi
- Coffee Machine
- Hairdryer
- Iron
- Sun terrace



Location & Local Information

Apartment Elisa boasts an extraordinary location overlooking St Mark's Square, placing guests moments from Venice's finest cafés, boutiques, and landmarks. The apartment offers front-row views of the square's centrepiece, St Mark's Basilica, famed for its dazzling mosaics, sacred relics, and the iconic copper horses. For sweeping views of the city and lagoon, simply take the lift to the top of Campanile San Marco, just steps away.

Soak up the atmosphere from one of the historic piazza cafés, such as Caffè Florian, serving coffee and pastries since 1720, often accompanied by live music. The nearby St Mark's Clocktower, with its striking blue and gold zodiac face, is another unmissable sight; guided tours offer a rare glimpse inside this 500-year-old treasure. Whether you're sightseeing, people-watching, or enjoying a quiet espresso, Apartment Elisa's setting offers an unforgettable introduction to Venice's historic heart.

Local Amenities

Nearest Airport	Venice Airport (17 km)
Nearest Bar/Pub	Devil's Forest Pub (400 m)
Nearest Restaurant	Ristorante Marciana (10 m)
Nearest Supermarket	Crai SanMarco Supermarket (180 m)
Nearest Train Station	Venezia Santa Lucia (2 km)
Sightseeing	Saint Mark's Basilica (100 m)



What we love

- We loved the incredible views from Apartment Elisa, including the iconic St. Mark's Basilica
- Restaurants, cafes and bars are just a short walk from the apartment
- The terrace is incredible, offering stunning views and a place to sit and watch the world go by

What you should know...

- Air conditioning is present in all rooms except the kitchen
- Only two of the bedrooms have ensuite facilities
- Smoking and pets are not permitted at Apartment Elisa

Terms & Conditions

- **Security deposit:** €1,000 charged to client's credit card before arrival and refunded two weeks after departure, subject to full inspection
- **Arrival time:** 3 - 8 pm
- **Departure time:** 11 am
- **Energy costs included?:** Yes, included in the rental price.
- **Linen & towels included?:** Yes, included in the rental price.
- **Pets welcome?:** Not allowed.
- **End of stay cleaning available?:** Not included in the rental price, extra €250 to be paid with the balance due.
- **Smoking Allowed?:** Smoking & Vaping are not permitted.
- **Minimum stay:** 3 - 5 nights, depending on the season. All other durations on request.
- **Heating costs included?:** Yes, included in the rental price.
- **Tax:** There is a city tax due to be paid locally which is not included in the rental rate. The amount will be confirmed by your onsite representative when you arrive.
- **Internet access?:** Wi-Fi internet access included.