

Apartment Antonella

Region: Veneto Sleeps: 8

Overview

Apartment Antonella is a remarkable first-floor residence in Venice's Dorsoduro district, offering sweeping Grand Canal views from the Accademia Bridge to the Academy of Fine Arts. With its own private water entrance, the apartment blends historical grandeur and modern elegance across a series of impressive living spaces. Ornate antiques, bespoke furnishings, and Venetian-Gothic windows set the tone, from the formal salone and gilded sitting room to a ruby-hued dining space for twelve, and a sleek, fully equipped kitchen with brushed oak cabinetry and black marble surfaces.

Four ensuite bedrooms accommodate up to eight guests, each thoughtfully styled for comfort and character. Highlights include a four-poster bed, canopied twin room with a hidden corridor, and a peaceful lounge overlooking a leafy garden. With its exquisite interiors, canal-side setting, and blend of formal and relaxed spaces, Apartment Antonella offers a refined base for those looking to experience Venice at its most atmospheric.

Facilities

City Homes & Apartments • Air-Con • Wine Tasting • Boat Trips • Historical Sites • Ideal for Kids • Maid Service Included • Special Offer • Has Discount • Wow Factor • Ideal for Teens • Instagrammable • <1hr to Airport • Walk to Restaurant • Wi-Fi/Internet • Easy By Train • Washing Machine • Coffee Machine • Hairdryer • Outdoor Pursuit & Activities • Tourist Towns & Villages • TV • Lift • Tumble Dryer • Microwave • Heating • On-Site Concierge • Butler Available



Interior & Grounds

Interior

- Salone
- Sitting room
- Main dining room with seating for twelve
- Breakfast room seating eight
- Contemporary style kitchen with a professional Viking double oven with 8 gas burner hob, an American style fridge freezer with ice machine, as well as further appliances by Miele
- Additional sitting room
- Master bedroom with a romantic four poster king size bed and an ensuite bathroom with bathtub and shower over
- Bedroom with a tester style king size bed and an en-suite bathroom with shower
- Bedroom with a king-size bed and an en-suite bathroom with a shower
- Bedroom with twin beds and an ensuite bathroom with twin sinks and a bathtub with shower over
- Bathroom with a shower
- Self-contained mezzanine suite with a single bed and a separate bathroom with shower

Additional Facilities

- Air conditioning
- Wi-Fi
- Coffee Machine
- Hairdryer
- Iron
- Daily maid service and 24hr butler service on request



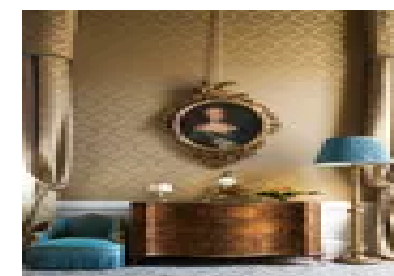
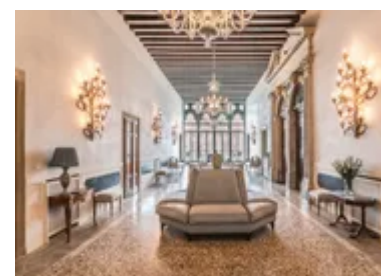
Location & Local Information

Set in the quieter Dorsoduro district, Apartment Antonella enjoys a prime position for those seeking a more authentic Venetian experience. Just moments from the Gallerie dell'Accademia, guests can explore one of Venice's most renowned collections of religious art, housed within former monastery buildings. The area is also celebrated for its dining scene, with canal-side trattorias and rooftop restaurants serving regional dishes, including Venice's famed seafood specialities.

Cultural highlights nearby include the Peggy Guggenheim Collection, showcasing iconic twentieth-century art, and the grand Ca' Rezzonico palace, with opulent interiors and sweeping marble staircases. For a taste of Venice's grandeur, St. Mark's Square is within easy reach. Often called the 'drawing room of Europe', it's home to the iconic St. Mark's Basilica, renowned for its golden mosaics and ancient relics. Entry is free, but early arrival is advised to avoid long queues during peak hours.

Local Amenities

Nearest Airport	Venice Marco Polo Airport (16 km)
Nearest Bar/Pub	Corner Pub, (650 m)
Nearest Restaurant	Ristorante - Palazzetto MyVenice (220 m)
Nearest Supermarket	CONAD (400 m)
Nearest Train Station	Venezia Santa Lucia (2 km)
Sightseeing	Basilica S.Maria Gloriosa dei Frari (800 m)



What we love

- We loved the Grand Canal water entrance, which made sight-seeing gondola rides an absolute dream!
- The interior is grand and opulent - staying here was like staying in a grand palace.
- The views from the apartment are absolutely breathtaking, particularly from the marble terrace.

What you should know...

- Maid and butler service, and a private chef are available on request.
- The property is air-conditioned throughout and also has Wi-Fi and satellite TV.
- Pets are not permitted in the apartment.
- This property is available on request, therefore dates showing as available will need to be verified with the owner. Please enquire at point of booking.

Terms & Conditions

- **Security deposit:** €3,000 charged to client's credit card before arrival and refunded two weeks after departure, subject to full inspection
- **Arrival time:** 3 - 8 pm
- **Departure time:** 11 am
- **Energy costs included?:** Yes, included in the rental price.
- **Linen & towels included?:** Yes, included in the rental price.
- **Pets welcome?:** Not allowed.
- **End of stay cleaning:** Standard changeover clean included in the price. Guests are required to leave the accommodation clean, tidy and in the same condition as on their arrival. Any extra cleaning, laundry, maintenance and/or rubbish disposal required will be charged against the security deposit.
- **Smoking Allowed?:** Smoking & Vaping are not permitted.
- **Minimum stay:** 3 - 5 nights, depending on the season. All other durations on request.
- **Heating costs included?:** Yes, included in the rental price.
- **Tax:** There is a city tax due to be paid locally which is not included in the rental rate. The amount will be confirmed by your onsite representative when you arrive.
- **Internet access?:** Wi-Fi internet access included.