

Apartment Fernanda

Region: Veneto **Sleeps:** 6

Overview

Set on the top floor of a historic palazzo in Venice's Dorsoduro district, Apartment Fernanda offers elegant canal-side living for up to six guests. This stylish penthouse includes three en-suite bedrooms, two doubles and a twin that can convert to a double, alongside a spacious living area, separate dining room for eight, and a well-appointed kitchen. French windows open onto a large terrace with views across Venetian rooftops and bell towers, perfect for relaxed breakfasts or evening drinks.

Located directly on the Grand Canal with private water access, the apartment boasts panoramic vistas of Ca' Rezzonico, the Accademia Bridge, and the Peggy Guggenheim Collection. Modern features include air-conditioning, Wi-Fi, a laundry room, and lift access. Period furnishings, timber floors, and generous natural light create a welcoming, refined atmosphere that suits families and friends alike. Guests can also combine stays with neighbouring apartments in the same building for larger group gatherings.

Facilities

Air-Con • Coffee Machine • Hairdryer • Boat Trips • Historical Sites • City Homes & Apartments • Washing Machine • Wi-Fi/Internet • TV • Wine Tasting • Lift • Easy By Train • Laptop Friendly Workspace • Ideal for Kids • Ideal for Teens • Walk to Restaurant • <1hr to Airport • Dishwasher • Microwave • Satellite TV • Heating • Outdoor Pursuit & Activities • Tourist Towns & Villages



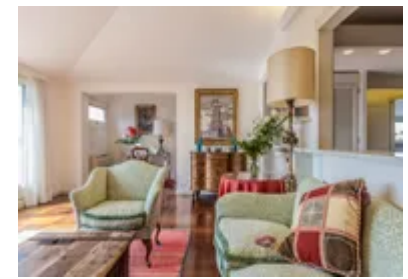
Interior & Grounds

Interior Grounds

- Sitting room with comfortable seating and wide French windows
- Dining area seating eight
- A fully-equipped kitchen/breakfast room including a large fridge with icemaker, microwave and coffee-makers
- Master bedroom with a double bed, French windows opening onto a private terrace and an ensuite bathroom with bathtub
- Bedroom with a double bed and an ensuite bathroom with bathtub
- Bedroom with twin beds (which can be made into a double bed – please ask when booking) and an en suite bathroom with bathtub and shower
- Bathroom with a w.c. and shower

Additional Facilities

- Air conditioning
- Wi-Fi
- Coffee Machine
- Hairdryer
- Iron



Location & Local Information

Apartment Fernanda is located in Dorsoduro, a central yet quieter district of Venice known for its artistic landmarks and relaxed pace. Highlights include the Gallerie dell'Accademia, home to some of the city's most important artworks, and Ca' Rezzonico, a grand palazzo showcasing the opulence of 18th-century Venetian life. Nearby, the Peggy Guggenheim Collection presents influential 20th-century pieces in a former private residence on the Grand Canal.

The area also offers excellent dining, from canal-side seafood restaurants to stylish rooftop spots. For a change of pace, head to St. Mark's Square, Venice's iconic piazza and cultural heart, where you'll find the breathtaking St. Mark's Basilica, famed for its mosaics and bronze horses. Early visits are advised to avoid long queues. Whether exploring historic museums or enjoying a waterside meal, the apartment's setting places you close to many of Venice's most memorable experiences.

Local Amenities

Nearest Airport	Venice Airport (16 km)
Nearest Bar/Pub	Corner Pub (650 m)
Nearest Restaurant	Taverna San Trovaso (260 m)
Nearest Supermarket	Conad City (350 m)
Nearest Train Station	Venezia Santa Lucia (2 km)
Sightseeing	Basilica S.Maria Gloriosa dei Frari (700 m)



What we love

- We loved the laid-back vibe and classic good looks of this fabulous penthouse apartment
- The fully furnished terrace was the perfect place to enjoy the view, and the private terrace in the master suite was an incredibly romantic spot
- The apartment building has water access, so it was easy to arrive and leave in style via water taxi

What you should know...

- The twin beds can be made into a double on request
- The property is air-conditioned throughout
- Smoking and pets are not permitted at the property

Terms & Conditions

- **Security deposit:** €1,000 charged to client's credit card before arrival and refunded two weeks after departure, subject to full inspection.
- **Arrival time:** 3 - 8 pm
- **Departure time:** 11 am
- **Energy costs included?:** Yes, included in the rental price.
- **Linen & towels included?:** Yes, included in the rental price.
- **Pets welcome?:** Not allowed.
- **End of stay cleaning available?:** Not included in the rental price, extra €230 to be paid with the balance due.
- **Smoking Allowed?:** Smoking & Vaping are not permitted.
- **Minimum stay:** 3 - 5 nights, depending on the season. All other durations on request.
- **Heating costs included?:** Yes, included in the rental price.
- **Tax:** There is a city tax due to be paid locally which is not included in the rental rate. The amount will be confirmed by your onsite representative when you arrive.
- **Internet access?:** Wi-Fi internet access included.