

Palazzo Luna

Region: Veneto Sleeps: 14

Overview

Escape the madding crowds when you vacation in the seriously impressive Palazzo Luna, located in the quiet Castello Orientale district of historic Venice, on Italy's northeast coast. This former fifteenth century Doge's palazzo has six spacious double bedrooms, and can comfortably accommodate up to fourteen guests in some style, ideal for a large family gathering, or friends' get together.

The palazzo has been recently restored to its former glory, cleverly combining classic historic treasures with modern amenities. The property comes with complimentary air conditioning, central heating, and Wi-Fi throughout, and its own internal elevator, gym, and a jacuzzi bath. The palazzo has been exquisitely interior designed, with cool contemporary pieces, natural wood, and billowing crisp white fabrics. Alfresco living space is provided by a decked rooftop terrace and a small garden. Words alone cannot do this palazzo justice, staying is believing!

Enter the villa at ground floor level, where you will find the most magnificent professional kitchen, fully fitted with stainless steel equipment, and commercial grade appliances. Work off those delicious dinners in the adjacent gym, with a shower room, Jacuzzi bath, and access to a small garden.

Take the stairs to the first floor where there is a large spacious sitting room, that opens onto a furnished shaded alfresco terrace, the perfect place for aperitivo. A second smaller seating area is the reading room with a television, bookcases and windows overlooking the water. The dining room has a table to seat twenty guests, for some seriously impressive entertaining. A second kitchen serves the two dining spaces, whilst a third has counter eating space, and stairs to the roof terrace. There are two beautifully-



appointed double bedrooms on the first floor. The king size bedroom has water views, private access to a covered terrace, and an ensuite bathroom with a shower. The second bedroom has twin beds, and an ensuite shower room.

On the second floor there are a further four double bedrooms. The largest has a queen size bed, water views, and ensuite bathroom with a bath and separate shower, and a balcony that overlooks a Palladian church. The second bedroom has a queen size bed, and ensuite bathroom with a shower, and Turkish bath, and an extra bed in the room, that is ideal for a child. The third has a queen size bed and an ensuite shower room, whilst the fourth has twin beds, and an ensuite shower room.

In the loft space, there are four sofa beds, the perfect place for teenagers to hang out, with an open kitchen, and a separate shower room. Access the one hundred and fifty square metre roof top terrace from the upper floor, where you can enjoy alfresco cocktails and dinner overlooking the Venetian city skyline. Or dine on the waterfront deck in the ground floor garden, as the gondolas go by.

Facilities

Air-Con • City Homes & Apartments • Boat Trips • Historical Sites • Walking/Hiking Paths • Walk to Village • Ideal for Kids • Special Offer • Maid Service Included • Has Discount • Wow Factor • Ideal for Teens • Maid Service Available • <1hr to Airport • Walk to Restaurant • Parking Space • Wi-Fi/Internet • Washing Machine • Outdoor Pursuit & Activities • Hairdryer • Tourist Towns & Villages • TV • DVD • Gym/Fitness Room • Hot Tub • Dishwasher • Working Fireplace/Woodburner • Heating

Interior & Grounds

Four storey stand alone apartment, former Doge's Palazzo:

Interior Grounds

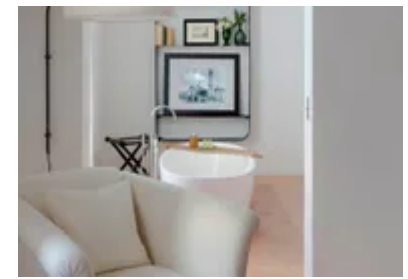
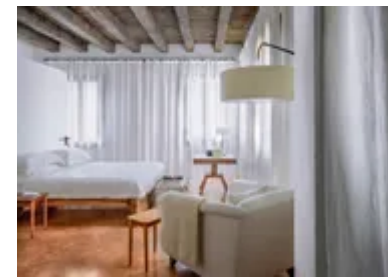
- Four bedrooms with Queen size beds
- Two twin rooms
- Loft space with four sofa beds
- Six bathrooms with bathtubs and showers
- Two bathrooms with showers
- Fully furnished sitting room
- Reading room with television
- Professional kitchen and two further smaller kitchens
- Dining room with a table to seat twenty guests
- Gym
- Jacuzzi Tub

Exterior Grounds

- Roof terrace 150sqm
- Decking and alfresco dining
- Garden
- Parking space

Additional Facilities

- Air conditioning
- Central heating
- Wi-Fi
- TV
- Hairdryers
- Dishwasher
- Baby facilities on request
- Daily clean
- Sofa beds



Location & Local Information

Palazzo Luna is a former fifteenth century Doge's palazzo, located away from the madding tourist crowds, in the Castello Orientale district of historic Venice. The palazzo is near to the Giardini della Biennale, famous for its fabulous art exhibitions, the beautiful Basilica di San Pietro Castello, and the Naval Museum.

The international Marco Polo airport is a fifty five minute private water taxi journey away, or eighty minutes by the public vaporetto. There are three vaporetto routes near to the palazzo, which can whisk you away to many of the major sights you will want to see. One of the joys of a holiday in Venice is walking over many of the four hundred bridges, and some of one hundred and eighteen canals, as the city reveals its colourful history.

It is a twenty minute walk to the impressive St Mark's Square, and the eleventh century Basilica, where mass is still held today. Visit the Byzantine Doge's Palace, climb the clocktower, and cross the Bridge of Sighs. On the other side of St Mark's Square is the Correr Museum, highlighting the history of Venice in its royal rooms and library.

Take time out to stroll around the square, window shop in the jewellery stores and designer dress shops, before sitting down for tea in Florian's, whilst the orchestra plays your favourite tunes. Cross the bridge or take a gondola taxi to the Napoleonic Accademia Gallery to view classical Venetian Renaissance art, and the nearby seventeenth century Basilica of Santa Maria della Salute, with its iconic cupola and twelve paintings by Titian. Make time to visit the Peggy Guggenheim Museum, an homage to twentieth century modern art, housed in her original palazzo home. Take a three island tour to see the glassblowers at work on Murano, the colourful houses and lacemakers of Burano, and the seventh century cathedral on Torcello, with its Byzantine art. Cross the Adriatic Sea to the Lido, famous for its grand hotels, long sandy beaches, and for those who like to chance their luck, there's a casino too.



Venice is a food lovers paradise, sample the local dish of Baccala Mantecato, a salted cod dish, best served with a chilled white wine. A walk to St Mark's Square will take you through back streets full of shops selling the very best quality hand crafted leather goods, silk scarves, and cashmere sweaters.

For the romantics, get into a gondola and cruise the canals, or simply take one, to cross the water from one side to the other. In the evening enjoy a stroll to Harry's Bar for a Bellini, before a night at the opera at the famous Fenice Theatre, then dine in a local restaurant, serving traditional Venetian dishes overlooking the Grand Canal, under a Tiepolo blue sky. If you are lucky enough to be there during Carnival time, make sure you wear a mysterious mask, and join in the fun and frolics of this fabulous festival.

Local Amenities

Nearest Airport	Venice Marco Polo Airport (50 km)
Nearest Supermarket	Prix Quality (280 m)
Nearest Train Station	Stazione di Venezia Santa Lucia (4 km)
Sightseeing	Campanile di San Pietro di Castello (28 m)
Sightseeing	Basilica di San Pietro di Castello (74 m)
Sightseeing	Doge's Palace (2 km)

What we love

- Palazzo Luna is far enough away from the crowds of tourists that flock to Venice, but near enough to be within walking distance of most of the major sights you'll want to see, and three vaporetto lines to take you there
- The large kitchen is simply superb, fitted to professional standards, you won't want to dine out, and a private chef can be conjured up by prior arrangement
- There are so many superb dining places in the palazzo, from the indoor twenty sitting dining set, to the outdoor top terrace, and the waterfront garden, take your pick, they are all pretty perfect
- Palazzo Luna has to be stayed in to be believed, the detached property, the interior décor, the decked terrace, sipping cocktails as the sun sets, is the stuff that the best holiday memories are made of

What you should know...

- Palazzo Luna is located in the quiet Castello Orientale district of Venice, with a twenty minute walk to St Mark's Square, we think the extra walking time is well worth it for the unique location
- Baby facilities available on request, the palazzo is very child-friendly
- Please note that the use of any external caterers and/or contractors is not permitted.

Terms & Conditions

- **Arrival time:** 16:00 - 20:00
- **Departure time:** 10:00
- **Energy costs included?:** Yes, included in the rental price.
- **Linen & towels included?:** Yes, included in the rental price.
- **Pets welcome?:** Not allowed.
- **Other Ts and Cs:** High chair and crib are available on request. Please enquire at the time of booking. Please note that the use of any external caterers and/or contractors is not permitted.
- **End of stay cleaning available?:** Yes. However, guests are required to leave the accommodation clean, tidy and in the same condition as on their arrival. Any extra cleaning, laundry, maintenance and/or rubbish disposal required will be charged against the security deposit. Basic morning cleaning (bedrooms and bathrooms) is included. Six days a week.
- **Smoking Allowed?:** Smoking & Vaping are not permitted.
- **Minimum stay:** 7 nights. All other durations on request.
- **Heating costs included?:** Yes, included in the rental price.
- **Tax:** The Italian government might require the payment of a Visitor's Tax (approximately €1.50 – €5.00 per person, per day, depending on the location) and may be applied for the first seven days in the destination. This tax is payable locally, in Euro cash.
- **Internet access?:** Wi-Fi internet access included.
- **Damage Waiver:** A damage waiver of €249 is due to help you enjoy a peaceful stay. The waiver provides a limited damage cover in case of any damage to the property or its contents (except in the case of deliberate or reckless acts) up to the value of €3500. It is essential to report any damage during your stay for the waiver to apply. Any damage not reported means the waiver will not be valid. Above €3500 claims will be made to recoup the extra charges incurred to repair any damage.