

# Silverlake - Kirrin Barn

Region: The South West    Sleeps: 12

## Overview

In an enviable position, Kirrin Barn boasts uninterrupted views of the lake that can be enjoyed from the comfort of the property's own private decking area. Relaxing with a drink in the fresh Dorset coastal breeze is just one of the many pleasures that await up to twelve guests. Access to Silverlake Resort's (<https://www.oliverstravels.com/silverlake-resort-dorset/>) facilities and activities means that the kids can hop on and off their paddle boards while the adults relax with a good book on the balcony, or have a picnic on the lawn while spotting the local wildlife on the water.

Inside, an open plan living, kitchen and dining area features a spacious dining table to share family meals and a woodburner to cosy up on those chillier evenings. The kitchen is well-equipped with an gas hob, dishwasher and an oven offering everything you need to self-cater in style. On the first floor, the three comfortable bedrooms - with bed linen and towels provided - include two ensuite king-size bedrooms (one with a furnished lakeview balcony), a double bunk-bed room sleeping up to four, and a family bathroom. On the second floor, a further two king-size bedrooms await, one with a lounge area, and a second family bathroom.

Effortless style and comfort combine to make Kirrin Barn a tranquil holiday home perched on the water's edge. For family getaways or a retreat with friends, there is something for everyone at the Silverlake Resort activity hub, from tennis courts or paddle boarding to unwinding in the restorative spa, sauna and shared swimming pool. Surrounded by the Dorset country side, not far from the stunning Jurassic Coastline and its glorious beaches, Silverlake Resort is truly the perfect spot to enjoy all that Dorset has to offer.



## Facilities

Walk to Village • Onsite Restaurants • Villa • Ideal for Xmas/NY • Boat Trips • Cycling • Tennis Nearby • Canoeing/Kayaking • Walking/Hiking Paths • Romantic • Ideal for Kids • Tennis Court • Golf Nearby • Recommended • Special Offer • Has Offer • Cots (Cribs) • Has Discount • Heated Pool • Ideal for Teens • Modern • Shared Pool • <1hr to Airport • Walk to Restaurant • Parking Space • Waterfront • Wi-Fi/Internet • Easy By Train • Washing Machine • Outstanding Landscapes • Hairdryer • Outdoor Pursuit & Activities • Spa/Massage • Tourist Towns & Villages • TV • Laptop Friendly Workspace • Gym/Fitness Room • Tumble Dryer • Dishwasher • Sauna/Steam • Working Fireplace/Woodburner • Heating • Kid-friendly excursions • Water excursions/Boat trips • Playground nearby • Ideal for Babies & Toddlers • High Chair(s)

# Interior & Grounds

## Kirrin Barn

### Ground Floor

- Well-equipped kitchen with breakfast bar
- L-shaped dining/lounge area with wood burning stove and sliding doors with patio access
- Utility with additional fridge/freezer
- Shower room and WC

### First Floor

- Master suite with superking bed, en-suite shower and private balcony with seating
- Double room with ensuite shower room
- Bunk room, sleeping up to four
- Family bathroom

### Second Floor

- King-size bedroom
- Family bathroom
- Double bedroom with lounge area

### Exterior

- Decked area with outdoor seating and coffee tables
- First floor balcony with lake views and seating area

### Additional Facilities

- WiFi
- Flat screen TV
- Dishwasher
- Bed and Bath linen included
- Fully equipped with cutlery and crockery
- Travel cot & highchair available on request
- Use of Estate spa and outdoor swimming pool
- Use of Estate tennis courts
- Bike hire
- Watersport equipment hire between March and October (paddleboards, canoes)
- Children's playground on the estate



# Location & Local Information

Kirrin Barn invites you to experience the serene charm of Silverlake Resort, nestled amidst Dorset's picturesque landscapes. Embrace tranquility and outdoor adventure as you explore waterways, cycle paths, and the rolling countryside. Whether paddling in a kayak, canoe or paddleboard, or cycling through the scenic bike trails, adventure awaits at every turn. Enjoy a friendly game on the resort's tennis court or 3G artificial-turf Multi Use Games Area (MUGA) in Beaumont Village, all while admiring the breathtaking views of the lakes. Unwind with a leisurely stroll along the sandy shores of the dramatic UNESCO-heritage Jurassic coastline, such as Ringsted Bay, or try your hand at fishing in our well-stocked lakes.

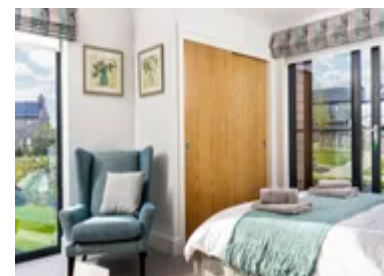
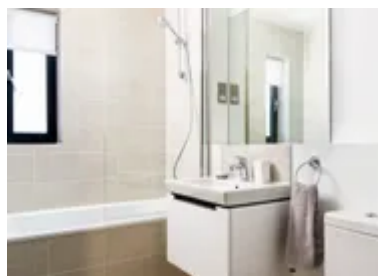
Discover nearby historic landmarks and charming villages, immersing yourself in Dorset's rich heritage. Wander through the breezy coastal town of Poole where you can hop on a ferry to neighbouring islands, uncover the rich history of Dorchester, visit the thousand-year-old Corfe Castle, or soak up the picture postcard vistas of Lyme Regis!

After a day of exploration, the Resort Spa is the perfect respite, where an outdoor pool, roof terrace, sauna, gym, library and a 'restful relaxation' lounge await.

Whether seeking relaxation or excitement, Silverlake Resort offers an unforgettable experience for every guest.

## Local Amenities

|                     |   |
|---------------------|---|
| Nearest Airport     | <b>Bournemouth Airport<br/>(45.5 km)</b>              |
| Nearest Bar/Pub     | <b>On site<br/>(In walking distance)</b>              |
| Nearest Beach       | <b>National Trust - Ringstead Bay<br/>(10 km)</b>     |
| Nearest Golf        | <b>Came Down Golf Club<br/>(12.5 km)</b>              |
| Nearest Restaurant  | <b>The Wise Man Inn<br/>(4.5 km)</b>                  |
| Nearest Shop        | <b>Co-Op, Crossways<br/>(2.5 km)</b>                  |
| Nearest Supermarket | <b>Waitrose &amp; Partners, Dorchester<br/>(9 km)</b> |
| Nearest Town/City   | <b>Dorchester<br/>(9 km)</b>                          |



|                       |  |
|-----------------------|--|
| Nearest Train Station | <b>Moreton Train Station</b><br>(5.5 km) |
| Nearest Village       | <b>Crossways</b><br>(2.5 km)             |
| Sightseeing           | <b>Durdle Door</b><br>(16 km)            |

## What we love

- The house-width master bedroom with private balcony will make it hard to leave the glorious views and deep comfort of your super-king bed.
- The double bunk room is the perfect sleepover spot for kids.
- Access to the beautiful natural lakes at Silverlake Resort (<https://www.oliverstravels.com/silverlake-resort-dorset/>) allows you can get up close to the local wildlife whilst gliding on a paddleboard or canoe.
- The 'resort' Spa offers a tranquil sanctuary of stress-free indulgence and ultimate relaxation!

## What you should know...

- The wood burning stove is placed in a central point in the L-shaped living area, so young children should be supervised when in use.
- Although the decking is private to the Barn, it is not enclosed.
- Please be aware there are no water-based activities between November and February for health and safety reasons.
- Access to bikes, canoes, kayaks, and stand-up paddle boards are available, but are subject to additional costs.
- A travel cot and high chair are available to hire, but come at an additional cost of £10. Please bring your own linen and mattress for the travel cot.

# Terms & Conditions

- **Security deposit:** £500 charged to client's credit card and held as a pre-authorisation prior to arrival and refunded a week after departure, subject to full inspection. This is handled by the local team.
- **Arrival time:** 16:00 - 00:00
- **Departure time:** 10:00
- **Energy costs included?:** Yes, included in the rental price.
- **Linen & towels included?:** Yes, included in the rental price.
- **Pets welcome?:** Not allowed.
- **Other Ts and Cs:** A travel cot & highchair are available on request, but are subject to an additional charge of £10. Please bring your own cot linen.
- **Changeover day:** Bookings are available for the following durations only: 7 nights starting on a Monday or Friday, 2 or 3 nights starting on a Friday, or 4 nights starting on a Monday.
- **End of stay cleaning:** Standard changeover clean included in the price. Guests are required to leave the accommodation clean, tidy and in the same condition as on their arrival. Any extra cleaning, laundry, maintenance and/or rubbish disposal required will be charged against the security deposit.
- **Smoking Allowed?:** Smoking & Vaping are not permitted.
- **Minimum stay:** 2 nights.
- **Heating costs included?:** Yes, included in the rental price.
- **Internet access?:** Wi-Fi internet access included.