

Silverlake - Skyfall

Region: The South West Sleeps: 7

Overview

Skyfall enjoys an enviable position with uninterrupted views of Silverlake Resort's (<https://www.oliverstravels.com/silverlake-resort-dorset/>) stunning natural lakes. Up to seven guests can soak up the scenery from the property's private hot tub and decking area, perfect for al fresco dining in the fresh Dorset coastal breeze. With a private jetty leading into the water, you can hop on and off your paddle boards whilst lunch sizzles on the BBQ, or picnic on the lawn whilst spotting the local wildlife on the water.

Inside an open plan living and kitchen area is a cosy nook with a woodburner to relax by, and a spacious dining table to host a family meal at. The kitchen is well-equipped with induction hob, dishwasher, coffee machine and two single ovens offering everything you need to self-cater in style.

Up to the first floor the comfortable bedrooms, with bed linen and towels provided, include a king bedroom with en-suite, a twin bedroom, a family bathroom and a great bunk room with a double bottom bunk. This floor benefits from a property width length balcony, accessed via the bedrooms, a great spot to soak up the lakeside views with a morning coffee.

Effortless style and comfort combine to make Skyfall a tranquil family holiday perched on the water's edge. There is something for everyone at the Silverlake Resort activity hub from tennis courts to paddle boarding, whilst those looking to relax and unwind can head for a restorative swim and sauna at the shared pool and spa. Surrounded by the Dorset country side, not far from the stunning Jurassic Coastline and its glorious beaches, the perfect spot to enjoy all the county has to offer.

Facilities

Onsite Restaurants • Romantic • Walking/Hiking Paths • Waterfront • Spa/Massage • Horse Riding • Watersports • Canoeing/Kayaking • Recommended • Tennis Nearby • Cycling • Ideal for Xmas/NY • Fishing • Golf Nearby • Tennis Court • Wi-Fi/Internet • Villa • Shared Pool • Gym/Fitness Room • Easy By Train • Cots (Cribs) • Walk to Village • Rural Location • Modern • Kid-friendly museum • Kid-friendly excursions • Water excursions/Boat trips • Playground nearby • Heated Pool • Ideal for Babies & Toddlers • Ideal for Kids • Ideal for Teens • Pets on Request • Hot Tub • Walk to Restaurant • <1hr to Airport • Dishwasher • Microwave • Satellite TV • Sauna/Steam • Working Fireplace/Woodburner • Heating • High Chair(s) • Parking Space • Outstanding Landscapes • Outdoor Pursuit & Activities • Tourist Towns & Villages



Interior & Grounds

Skyfall

Ground Floor

- Open plan living kitchen dining area with wood burning stove
- WC

First Floor

- King bedroom with en-suite shower and access to balcony
- Twin room and access to balcony
- Kids bunk room with double bottom bunk
- Family bathroom
- Balcony with coffee table and chairs

Exterior

- Private decking with BBQ and outdoor dining furniture
- Hot Tub
- Private jetty
- Parking
- Garden area

Additional Facilities

- Wi-Fi
- Satellite TV
- Travel cot & highchair available on request
- Use of Estate spa and outdoor swimming pool
- Use of Estate tennis courts
- Bike hire
- Watersport equipment hire between March and October (paddleboards, canoes)
- Childrens playground on the estate



Location & Local Information

Skyfall invites you to experience the serene charm of Silverlake Resort, nestled amidst Dorset's picturesque landscapes. Embrace tranquillity and outdoor adventure as you explore waterways, cycle paths, and the rolling countryside. Whether paddling in a kayak, canoe or paddleboard, or biking through the scenic routes, adventure awaits at every turn. Enjoy a friendly game on the resort's tennis court or 3G artificial-turf Multi Use Games Area (MUGA) in Beaumont Village, all while admiring the breathtaking views of the lakes. Unwind with a leisurely stroll along the sandy shores of the dramatic UNESCO-heritage Jurassic coastline, such as Ringsted Bay, or try your hand at fishing in our well-stocked lakes.

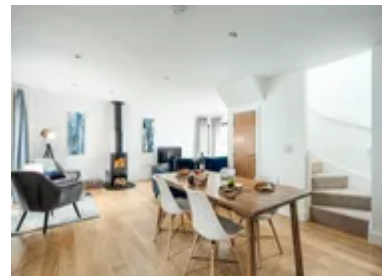
Discover nearby historic landmarks and charming villages, immersing yourself in Dorset's rich heritage. Wander through the breezy coastal town of Poole where you can hop on a ferry to neighbouring islands, uncover the rich history of Dorchester, visit the thousand-year-old Corfe Castle, or soak up the picture postcard vistas of Lyme Regis!

After a day of exploration, the Resort Spa is the perfect respite, where an outdoor pool, roof terrace, sauna, gym, library and a 'restful relaxation' lounge await.

Whether seeking relaxation or excitement, Silverlake Resort offers an unforgettable experience for every guest.

Local Amenities

Nearest Airport	Bournemouth Airport (45.5 km)
Nearest Bar/Pub	On Site (In walking distance)
Nearest Beach	National Trust - Ringstead Bay (10 km)
Nearest Golf	Came Down Golf Club (12.2 km)
Nearest Restaurant	The Wise Man Inn (4.5 km)
Nearest Shop	Co-Op, Crossways (2.5 km)
Nearest Supermarket	Waitrose & Partners, Dorchester (9 km)
Nearest Town/City	Dorchester (9 km)



Nearest Train Station	Moreton Train Station (5.5 km)
Nearest Village	Crossways (2.5 km)
Sightseeing	Durdle Door (16 km)

What we love

- Al fresco dining, evening drinks on the balcony and bubbling hot tubs are on the cards in this desirable lakeside home.
- The wood-burning stove provides a place to cosy up in the winter months.
- A private jetty and garden area means you can hop on and off the water with ease, on paddle boards or kayaks available to hire from the Silverlake Resort (<https://www.oliverstravels.com/silverlake-resort-dorset/>) Activity Hub.
- A stone's throw from the glorious beaches of the Jurassic Coast.

What you should know...

- Although the decking and hot tub is for your private use, the area is not enclosed
- Children should be supervised in the hot tub
- Although safe, the development is centred round a lake so guests with small children should not be left to explore on their own
- There are no water-based activities from November to February due to low temperatures
- A travel cot and high chair are available to hire, but come at an additional cost of £10. Please bring your own linen and mattress for the travel cot.

Terms & Conditions

- **Security deposit:** £500 charged to client's credit card and held as a pre-authorisation prior to arrival and refunded a week after departure, subject to full inspection. This is handled by the local team.
- **Arrival time:** 16:00 - 00:00
- **Departure time:** 10:00
- **Energy costs included?:** Yes, included in the rental price.
- **Linen & towels included?:** Yes, included in the rental price.
- **Pets welcome?:** Not allowed.
- **Other Ts and Cs:** Travel cot and highchair available for £10, subject to availability. Please advise at the time of booking. Guest to provide their own linen and mattress for a travel cot.
- **Changeover day:** Bookings are available for the following durations only: 7 nights starting on a Monday or Friday, 2 or 3 nights starting on a Friday, or 4 nights starting on a Monday.
- **End of stay cleaning available?:** Yes. However, guests are required to leave the accommodation clean, tidy and in the same condition as on their arrival. Any extra cleaning, laundry, maintenance and/or rubbish disposal required will be charged against the security deposit.
- **Smoking Allowed?:** Smoking & Vaping are not permitted.
- **Minimum stay:** 2 nights.
- **Heating costs included?:** Yes, included in the rental price.
- **Internet access?:** Wi-Fi internet access included.