

Silverlake - Lakeside

Region: The South West **Sleeps:** 8

Overview

Discover the tranquillity of Lakeside, a stunning lakeside retreat nestled within the picturesque Silverlake Resort (<https://www.oliverstravels.com/silverlake-resort-dorset/>) in Dorset. With four comfortable bedrooms, this luxurious holiday house easily accommodates up to eight guests, offering a memorable stay for families and groups of friends alike.

Step inside to find a contemporary retreat adorned with modern amenities and elegant furnishings. The open-plan living areas provide views of the surrounding landscape, while plush sofas and a fireplace invite you to unwind in style. Large windows and sliding doors effortlessly capture the stunning surroundings, opening onto a private decking with a comfortable sofa, the perfect vantage point from which to enjoy lake views in the sunshine.

Whether you're lounging by the fireplace or preparing a meal in the fully-equipped kitchen or on the outdoor BBQ, every aspect has been carefully thought about. The lakeside private terrace and tranquil first floor balcony beckon, while direct access to the lake and resort activities ensures endless opportunities for recreation and relaxation.

Indulge in the ultimate lakeside getaway at Lakeside, where every detail is designed to elevate your experience. From leisurely strolls through the reserve to exhilarating water sports, there's something for everyone to enjoy. Book your stay today and immerse yourself in the serene beauty of Dorset's enchanting landscape.

Facilities



Romantic • Onsite Restaurants • Villa • Ideal for Xmas/NY • Cycling • Tennis Nearby • Historical Sites • Canoeing/Kayaking • Watersports • Walking/Hiking Paths • Walk to Village • Ideal for Kids • Golf Nearby • Fishing • Recommended • Special Offer • Cots (Cribs) • Has Offer • Heated Pool • Ideal for Teens • Instagrammable • Shared Pool • <1hr to Airport • Parking Space • Waterfront • Wi-Fi/Internet • Easy By Train • Outstanding Landscapes • Outdoor Pursuit & Activities • Hairdryer • Spa/Massage • Tourist Towns & Villages • TV • Gym/Fitness Room • Electric Car Charger • Sauna/Steam • Working Fireplace/Woodburner • Heating • Kid-friendly excursions • Water excursions/Boat trips • Playground nearby • Ideal for Babies & Toddlers • High Chair(s)

Interior & Grounds

Lakeside

Ground Floor

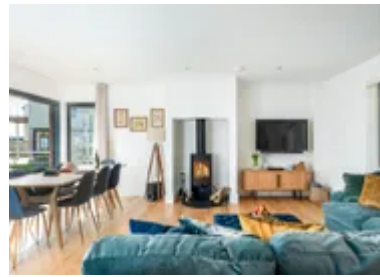
- Open plan living kitchen dining area with wood burning stove
- WC

First Floor

- Double bedroom with en-suite shower and access to balcony
- Double bedroom with en-suite shower and access to balcony
- Double bedroom
- Bunk room
- Family bathroom

Exterior

- Private decking with charcoal BBQ and outdoor dining furniture
- Private jetty
- First floor balcony
- Parking
- Garden area



Location & Local Information

Lakeside invites you to experience the serene charm of Silverlake Resort, nestled amidst Dorset's picturesque landscapes. Embrace tranquillity and outdoor adventure as you explore waterways, cycle paths, and the rolling countryside. Whether paddling in a kayak, canoe or paddleboard, or cycling through the scenic bike trails, adventure awaits at every turn. Enjoy a friendly game on the resort's tennis court or 3G artificial-turf Multi Use Games Area (MUGA) in Beaumont Village, all while admiring the breathtaking views of the lakes. Unwind with a leisurely stroll along the sandy shores of the dramatic UNESCO-heritage Jurassic coastline, such as Ringsted Bay, or try your hand at fishing in our well-stocked lakes.

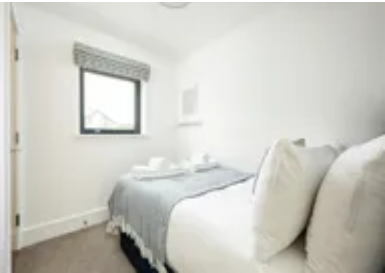
Discover nearby historic landmarks and charming villages, immersing yourself in Dorset's rich heritage. Wander through the breezy coastal town of Poole where you can hop on a ferry to neighbouring islands, uncover the rich history of Dorchester, visit the thousand-year-old Corfe Castle, or soak up the picture postcard vistas of Lyme Regis!

After a day of exploration, the Resort Spa is the perfect respite, where an outdoor pool, roof terrace, sauna, gym, library and a 'restful relaxation' lounge await.

Whether seeking relaxation or excitement, Silverlake Resort offers an unforgettable experience for every guest.

Local Amenities

Nearest Airport	Bournemouth Airport (45.5 km)
Nearest Bar/Pub	On site (In walking distance)
Nearest Beach	National Trust - Ringstead Bay (10 km)
Nearest Golf	Came Down Golf Club (12.5 km)
Nearest Restaurant	The Wise Man Inn (4.5 km)
Nearest Shop	Co-Op, Crossways (2.5 km)
Nearest Supermarket	Waitrose & Partners, Dorchester (9 km)
Nearest Town/City	Dorchester (9 km)



Nearest Train Station	Moreton Train Station (5.5 km)
Nearest Village	Crossways (2.5 km)
Sightseeing	Durdle Door (16 km)

What we love

- Life on the water's edge made easy with your own private jetty and outdoor decking. Relax on the terrace and enjoy the serene calmness of the water below.
- With hundreds of acres of outstanding natural habitats, the outdoor explorations are endless at Silverlake Resort (<https://www.oliverstravels.com/silverlake-resort-dorset/>)!
- The Resort Spa offers offer a tranquil sanctuary of stress-free indulgence and ultimate relaxation!
- A stone's throw from the glorious beaches of the Jurassic Coast

What you should know...

- The fifth bedroom is a bunk bed room, which is great for children but perhaps not ideal for adults!
- Although safe, the development is centred round a lake so guests with small children should not be left to explore on their own
- Please be aware there are no water-based activities between November and February for health and safety reasons.
- Access to bikes, canoes, kayaks, and stand-up paddle boards are available, but are subject to additional costs.
- A travel cot and high chair are available to hire, but come at an additional cost of £10. Please bring your own linen and mattress for the travel cot.

Terms & Conditions

- **Security deposit:** £500 charged to client's credit card and held as a pre-authorisation prior to arrival and refunded a week after departure, subject to full inspection. This is handled by the local team.
- **Arrival time:** 16:00 - 00:00
- **Departure time:** 10:00
- **Energy costs included?:** Yes, included in the rental price.
- **Linen & towels included?:** Yes, included in the rental price.
- **Pets welcome?:** Not allowed.
- **Other Ts and Cs:** Travel cot and highchair available for £10, subject to availability. Please advise at the time of booking. Guest to provide their own linen and mattress for a travel cot.
- **Changeover day:** Bookings are available for the following durations only: 7 nights starting on a Monday or Friday, 2 or 3 nights starting on a Friday, or 4 nights starting on a Monday.
- **End of stay cleaning available?:** Yes. However, guests are required to leave the accommodation clean, tidy and in the same condition as on their arrival. Any extra cleaning, laundry, maintenance and/or rubbish disposal required will be charged against the security deposit.
- **Smoking Allowed?:** Smoking & Vaping are not permitted.
- **Minimum stay:** 2 nights.
- **Heating costs included?:** Yes, included in the rental price.
- **Internet access?:** Wi-Fi internet access included.